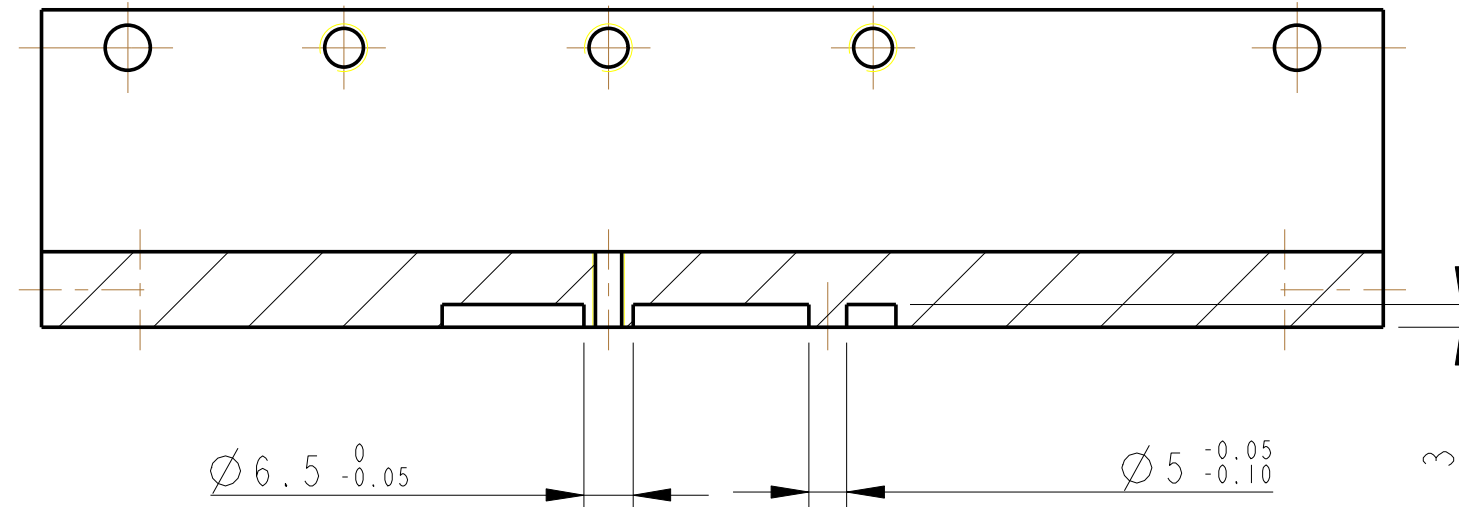
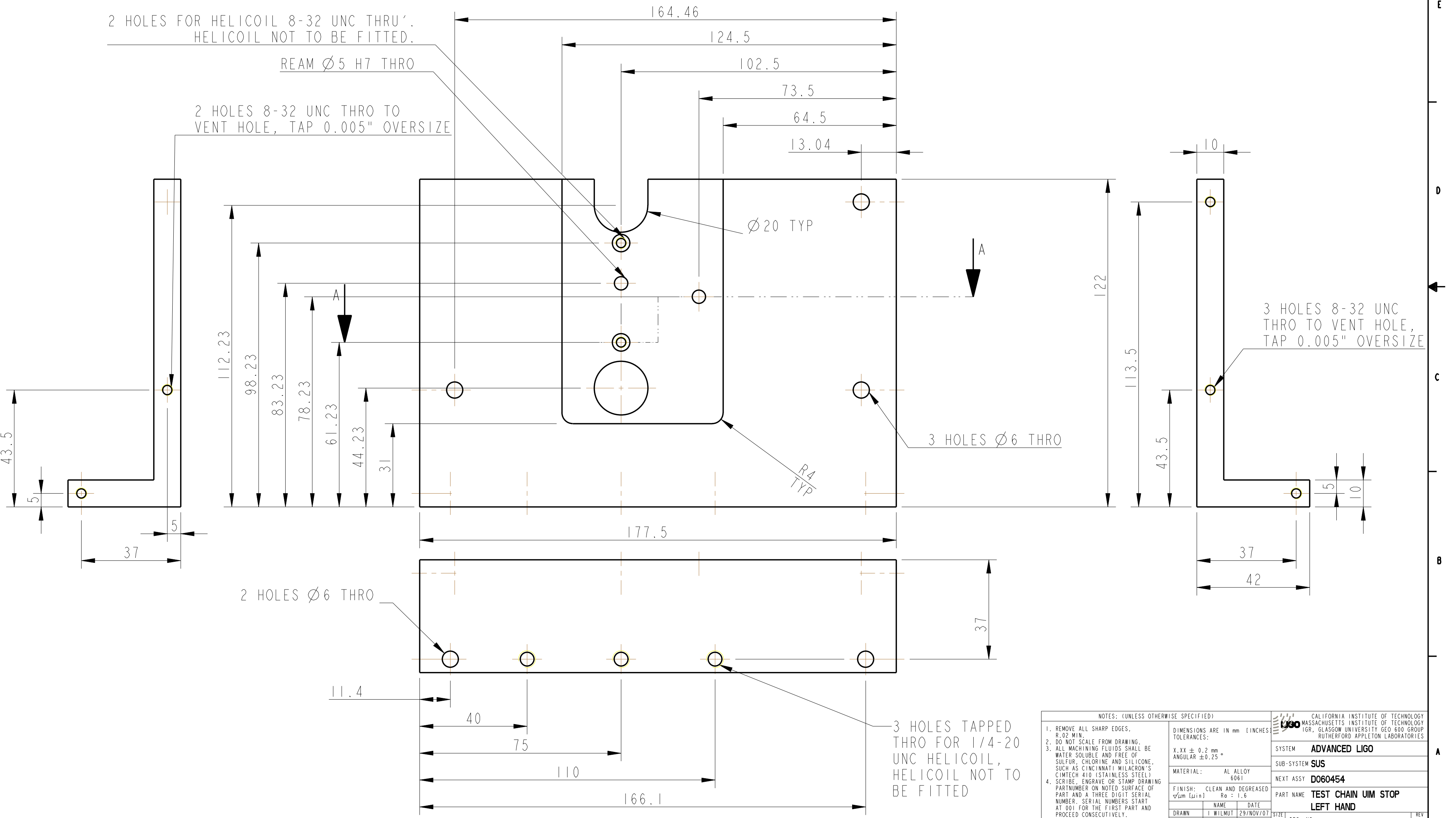


REV.	DATE	DCN #	DRAWING TREE #
B	21/DEC/07	E060260-B	
C	22/JULY/08	E080372	



SECTION A-A



2 HOLES FOR HELICOIL 8-32 UNC THRU'. HELICOIL NOT TO BE FITTED.

REAM  $\varnothing 5$  H7 THRO

2 HOLES 8-32 UNC THRO TO VENT HOLE, TAP 0.005" OVERSIZE

$\varnothing 20$  TYP

3 HOLES  $\varnothing 6$  THRO

3 HOLES 8-32 UNC THRO TO VENT HOLE, TAP 0.005" OVERSIZE

2 HOLES  $\varnothing 6$  THRO

3 HOLES TAPPED THRO FOR 1/4-20 UNC HELICOIL, HELICOIL NOT TO BE FITTED

NOTES: (UNLESS OTHERWISE SPECIFIED)

- REMOVE ALL SHARP EDGES. R.02 MIN.
- DO NOT SCALE FROM DRAWING.
- ALL MACHINING FLUIDS SHALL BE WATER SOLUBLE AND FREE OF SULFUR, CHLORINE AND SILICONE. SUCH AS CINCINNATI MILACRON'S CIMTECH 410 (STAINLESS STEEL)
- SCRIBE, ENGRAVE OR STAMP DRAWING PART NUMBER ON NOTED SURFACE OF PART AND A THREE DIGIT SERIAL NUMBER. SERIAL NUMBERS START AT 001 FOR THE FIRST PART AND PROCEED CONSECUTIVELY. USE .07" HIGH CHARACTERS. EXAMPLE: D020188-001. A VIBRATORY TOOL MAY BE USED.

DIMENSIONS ARE IN mm (INCHES)

X.YX ± 0.2 mm  
ANGULAR ± 0.25°

MATERIAL: AL ALLOY 6061

FINISH: CLEAN AND DEGREASED  
Ra = 1.6  
√Ra [μm]

DATE	NAME	REV
29/NOV/07	I WILMUT	1
16/MAY/08	AJB	2
22/JULY/08	AJB	3

SCALE 1:1 PROJECTION: SHEET 1 OF 1

CALIFORNIA INSTITUTE OF TECHNOLOGY MASSACHUSETTS INSTITUTE OF TECHNOLOGY 16R, GLASGOW UNIVERSITY GEO 600 GROUP RUTHERFORD APPLETON LABORATORIES	
SYSTEM	ADVANCED LIGO
SUB-SYSTEM	SUS
NEXT ASSY	D060454
PART NAME	TEST CHAIN UIM STOP
DRG. NO.	D070545
SCALE	1:1