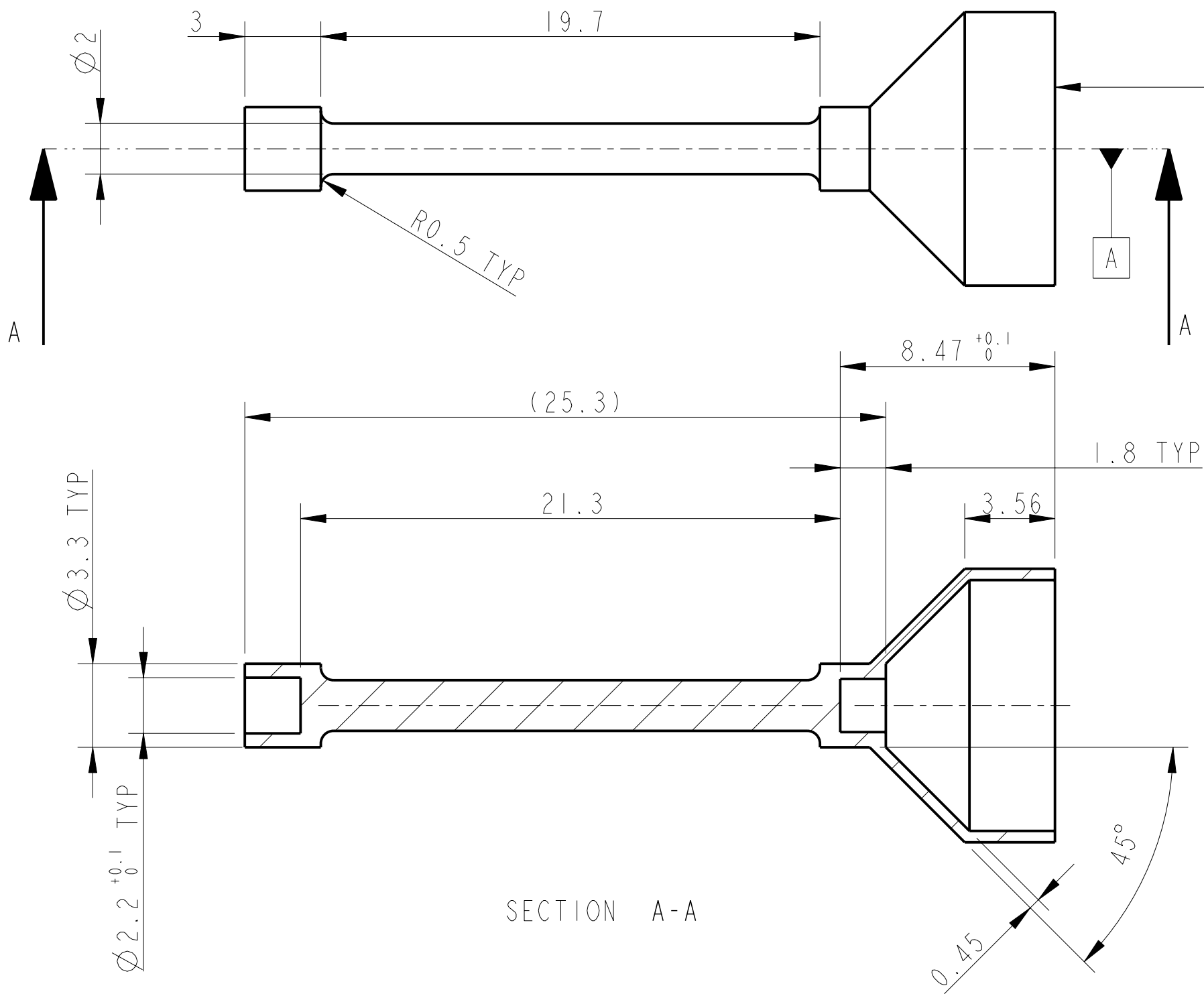
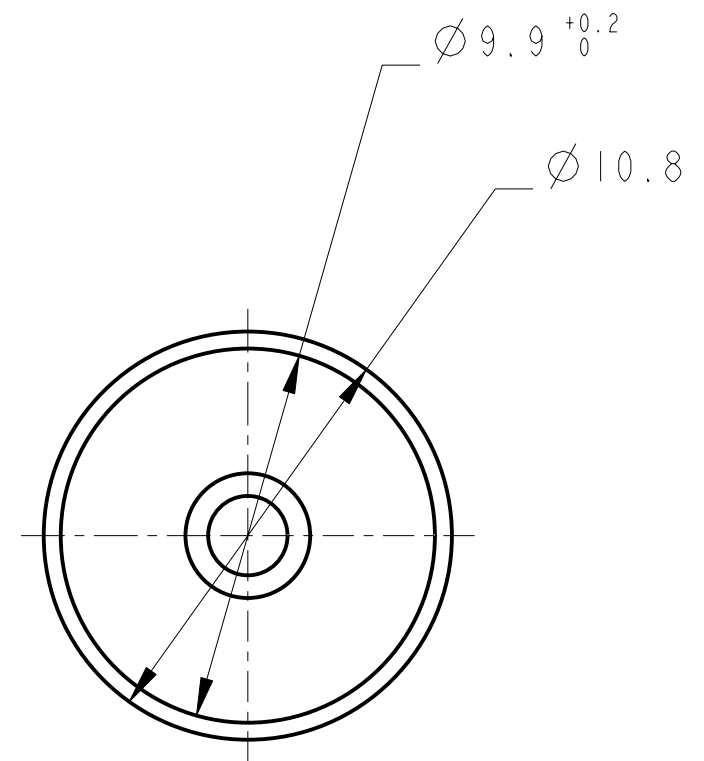


REV.	DATE	DCN #	DRAWING TREE #



0.01 A



SECTION A-A

NOTES: (UNLESS OTHERWISE SPECIFIED)

- REMOVE ALL SHARP EDGES, R.02 MIN.
- DO NOT SCALE FROM DRAWING.
- ALL MACHINING FLUIDS SHALL BE WATER SOLUBLE AND FREE OF SULFUR, CHLORINE AND SILICONE, SUCH AS CINCINNATI MILACRON'S CIMTECH 410 (STAINLESS STEEL)
- SCRIBE, ENGRAVE OR STAMP DRAWING PART NUMBER ON NOTED SURFACE OF PART AND A THREE DIGIT SERIAL NUMBER. SERIAL NUMBERS START AT 001 FOR THE FIRST PART AND PROCEED CONSECUTIVELY. USE .07" HIGH CHARACTERS. EXAMPLE: D020188- 001. A VIBRATORY TOOL MAY BE USED.

DIMENSIONS ARE IN mm [INCHES]
TOLERANCES:
X.XX ±0.2 mm
ANGULAR ±1°

MATERIAL: AL ALLOY 5083 OR SIMILAR

FINISH: CLEAN
√μm [μin] Ra = 1.6

	NAME	DATE
DRAWN	J O'DELL	04/JUN/07
CHECKED	IW	04/JUN/07
APPROVED	IW	19/JUN/07

1300 CALIFORNIA INSTITUTE OF TECHNOLOGY
MASSACHUSETTS INSTITUTE OF TECHNOLOGY
IGR, GLASGOW UNIVERSITY GEO 600 GROUP
RUTHERFORD APPLETON LABORATORIES

SYSTEM **ADVANCED LIGO**

SUB-SYSTEM **SUS**

NEXT ASSY **PEN RE MASS MAGNETS**

PART NAME **MAGNET HOLDER
(EXTERNAL SHEILDED MAGNETS)**

SIZE **B** DRG. NO. **D070235** REV **E.**

SCALE 5:1 PROJECTION: SHEET 1 OF 1