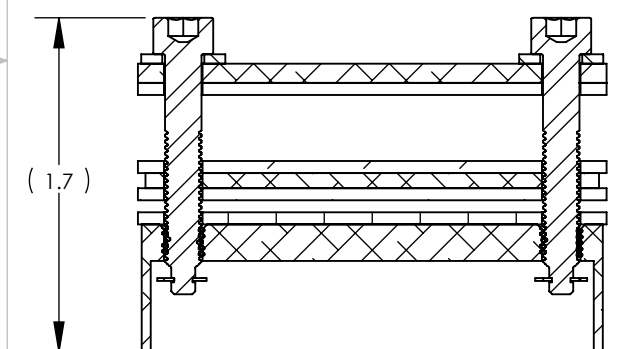
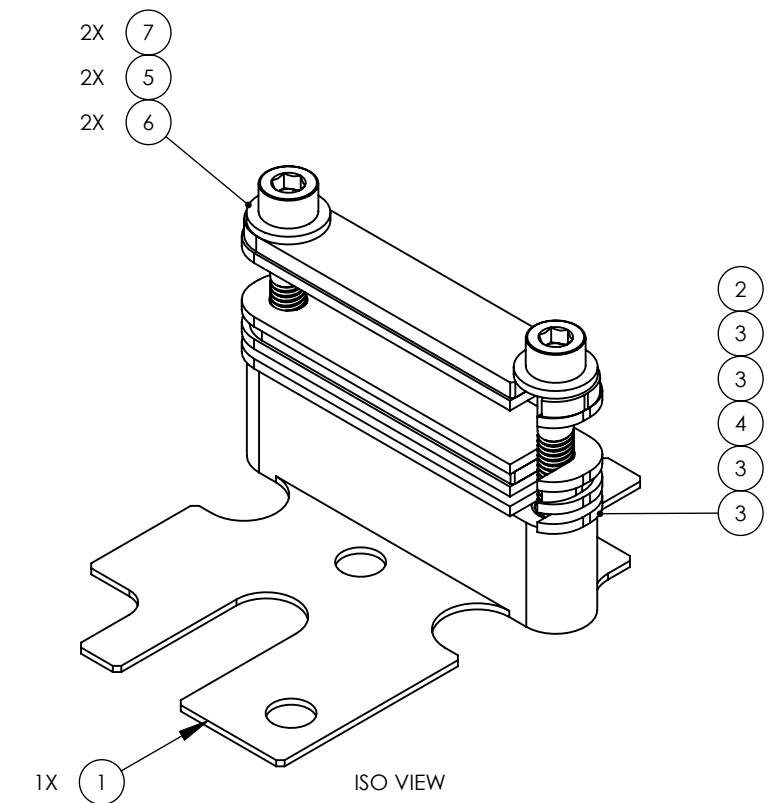
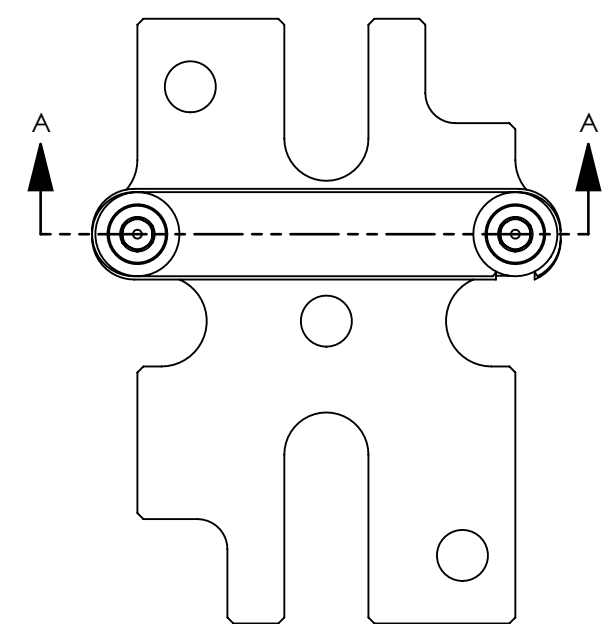
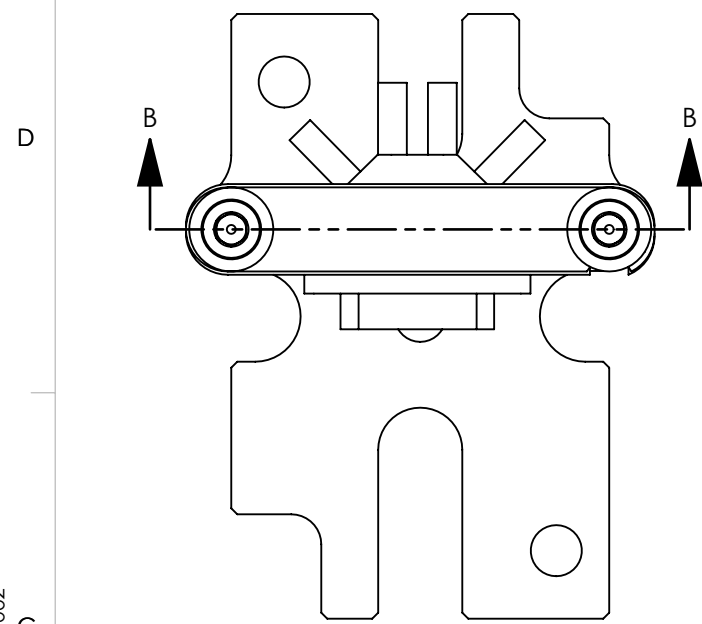
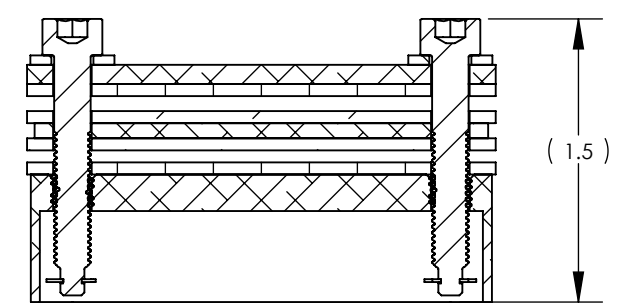


D070221 ALIGO, SUS, QUAD WIRING HARNESS, UIM MASS WIRE CLAMP ASSY., PART PDM REV: X-021, DRAWING PDM REV: X-002

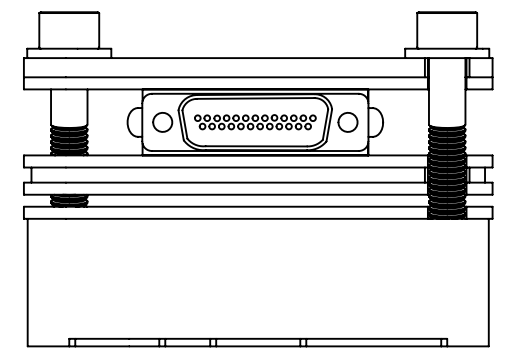
REV.	DATE	DCN #	DRAWING TREE #
v1	14 JUN 2007	-	-
v2	11 AUG 2009	-	-
v3	16 APR 2012	E1200388-x0	-



SECTION B-B



SECTION A-A
(FULLY COMPRESSED)



WITH CONNECTOR
(CONNECTOR NOT PART OF FINISHED ASSY. SHOWN FOR REF. ONLY)

ITEM NO.	PART NUMBER	DESCRIPTION	QTY.
7	94981A120 McMASTER-CARR	RETAINING RING, 1/8 SHAFT, TYPE E, SIDE MT.	2
6	MS15795-808 OR EQ.	WASHER, FLAT, #10	2
5	D1102135	ALIGO, SUS, QUAD, SCREW, SHC, 10-32 X 1.25 LG., OSEM/ESD CABLE CLAMP	2
4	D1102134	ALIGO, SUS, QUAD, CABLE CLAMP DIVIDER SHIM OSEM/ESD (REDESIGNED)	1
3	D1102147	ALIGO SUS, CABLE CLAMP FLOUREL PAD, OSEM/ECD (REDESIGNED)	4
2	D1102136	ALIGO, SUS, QUAD WIRING HARNESS, OSEM/ESD CABLE CLAMP JAW (REDESIGNED)	1
1	D070220	ALIGO, SUS, QUAD NPTYPE WIRING HARNESS, UIM MASS WIRE CLAMP ASSY.	1

PARTS LIST

NOTES AND TOLERANCES: (UNLESS OTHERWISE SPECIFIED)

MATERIAL	N/A	FINISH	N/A μinch
NEXT ASSY	MULTIPLE		

CALIFORNIA INSTITUTE OF TECHNOLOGY MASSACHUSETTS INSTITUTE OF TECHNOLOGY		PART NAME ALIGO, SUS, QUAD NPTYPE WIRING HARNESS, UIM MASS TOP WIRE CLAMP ASSY.	
SYSTEM	ADVANCED LIGO	SUB-SYSTEM	SUS
DESIGNER	I.WILMUT	14 JUN 2007	SIZE DWG. NO.
DRAFTER	I.WILMUT	14 JUN 2007	B
CHECKER	MB	15 MAR 2010	D070221
APPROVAL	J.ODELL	15 MAR 2012	REV. v3
SCALE: 1:1		PROJECTION:	SHEET 1 OF 1