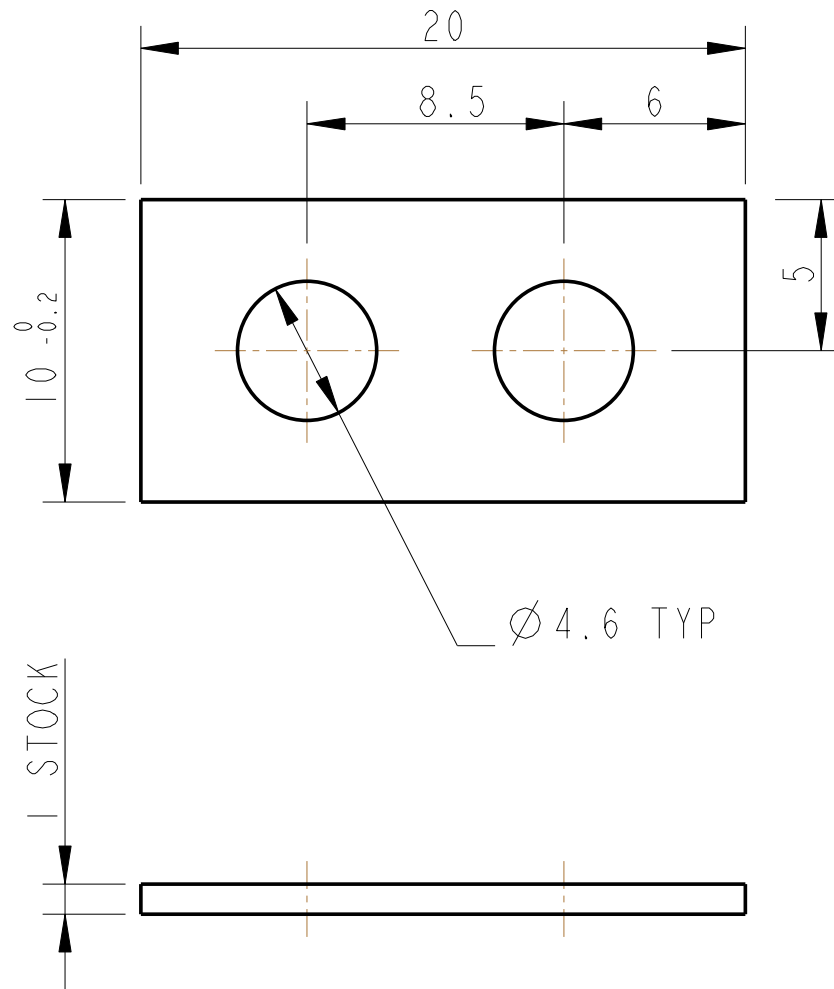


REV.	DATE	DCN #	DRAWING TREE #
.	.	.	.



Ø 4.6 TYP

STOCK

NOTES: (UNLESS OTHERWISE SPECIFIED)		
<ol style="list-style-type: none"> REMOVE ALL SHARP EDGES, R.02 MIN. DO NOT SCALE FROM DRAWING. ALL MACHINING FLUIDS SHALL BE WATER SOLUBLE AND FREE OF SULFUR, CHLORINE AND SILICONE, SUCH AS CINCINNATI MILACRON'S CIMTECH 410 (STAINLESS STEEL) SCRIBE, ENGRAVE OR STAMP DRAWING PARTNUMBER ON NOTED SURFACE OF PART AND A THREE DIGIT SERIAL NUMBER. SERIAL NUMBERS START AT 001 FOR THE FIRST PART AND PROCEED CONSECUTIVELY. USE .07" HIGH CHARACTERS. EXAMPLE: D020188- 001. A VIBRATORY TOOL MAY BE USED. 	DIMENSIONS ARE IN mm [INCHES] TOLERANCES: X.XX ±0.2 mm ANGULAR ±0.25 °	
	MATERIAL: AL ALLOY 5083 OR SIMILAR	
	FINISH: CLEAN AND DEGREASED √μm [μin] Ra = 1.6 OR STOCK	
	NAME	DATE
DRAWN	I WILMUT	27/APR/07
CHECKED	J'OD	30/APR/07
APPROVED	IW	30/APR/07

CALIFORNIA INSTITUTE OF TECHNOLOGY MASSACHUSETTS INSTITUTE OF TECHNOLOGY IGR, GLASGOW UNIVERSITY GEO 600 GROUP RUTHERFORD APPLETON LABORATORIES	
SYSTEM	ADVANCED LIGO
SUB-SYSTEM	SUS
NEXT ASSY	QUAD N-PTYPE TOP STAGE
PART NAME	TOP STAGE BLADE WIRE CLAMP SHIM
SIZE	DRG. NO. D070140
A	REV A.
SCALE 4:1	PROJECTION: SHEET 1 OF 1