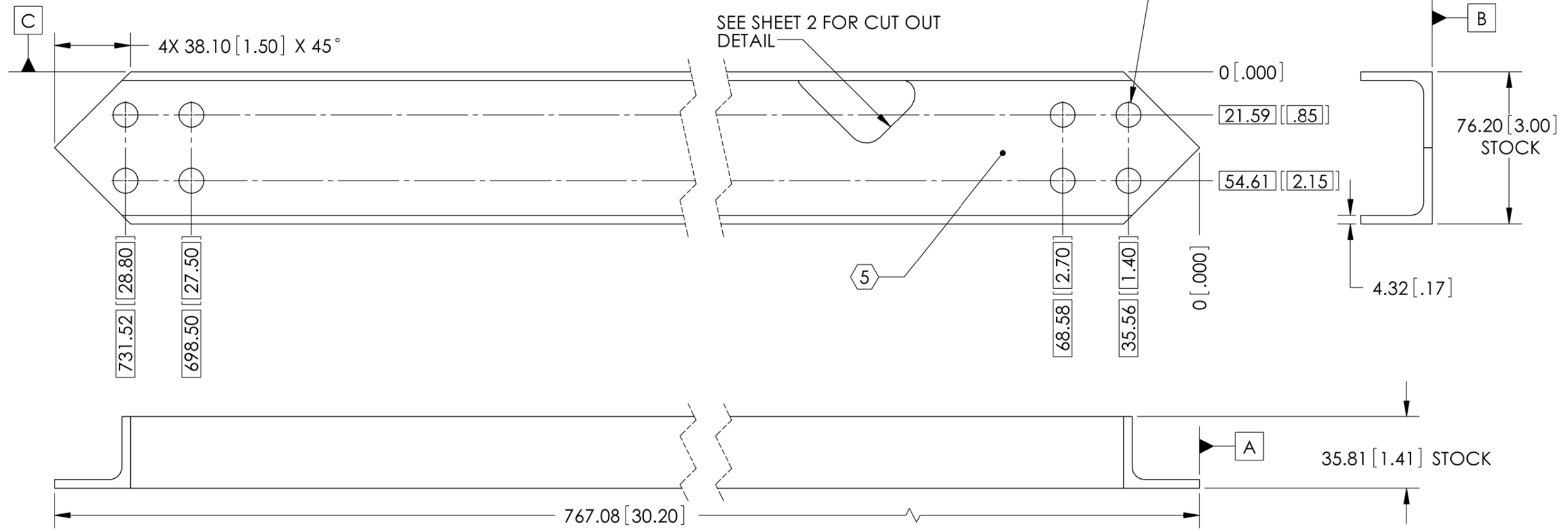
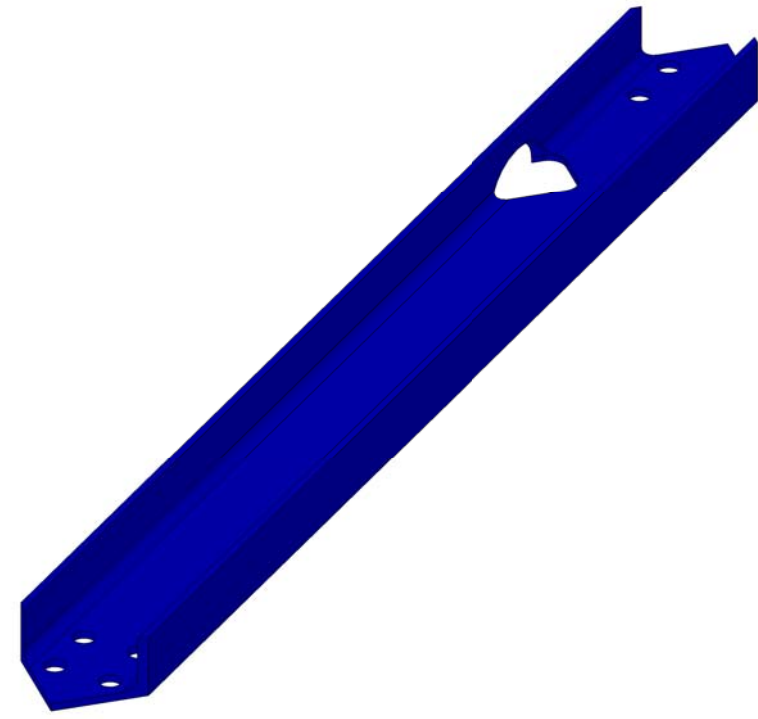


8 7 6 5 4 3 2 1

NOTES CONTINUED:

- 4. ALL MACHINING FLUIDS MUST BE FULLY SYNTHETIC, FULLY WATER SOLUBLE AND FREE OF SULFUR, SILICONE AND CHLORINE.
- 5. SCRIBE, ENGRAVE, OR MECHANICALLY STAMP (NO INKS OR DYES) DRAWING PART NUMBER, REVISION (AND VARIANT OR "TYPE" IF APPLICABLE ON NOTED SURFACE OF PART FOLLOWED ON THE NEXT LINE WITH A THREE DIGIT SERIAL NUMBER. SERIAL NUMBERS START AT 001 FOR THE FIRST ARTICLE AND PROCEED CONSECUTIVELY. USE MINIMUM 0.12 HIGH CHARACTERS, UNLESS THE SIZE OF THE PART DICTATES SMALLER CHARACTERS. A VIBRATORY TOOL MAY BE USED. EXAMPLE DXXXXXXX-VY, TYPE-XX, S/N XXX.
- 6. APPROXIMATE WEIGHT = 1152 grams.
- 7. ELECTRO-POLISH TO REMOVE OXIDES REMOVE .0005 MIN TO .001 MAX PER SIDE, USE OF ABRASIVE REMOVAL TECHNIQUES (INCLUDING SANDING OR SCOURING FOR MATTE FINISH) IS NOT ALLOWED. USE OF SCOTCH-BRITE OR SIMILAR PRODUCTS IS FORBIDDEN.
- 8. ALL PARTS SHALL BE MANUFACTURED IN ACCORDANCE WITH LIGO SPECIFICATION E0900364.
- 9. ALL MATERIAL IS TO BE VIRGIN MATERIAL (I.E. NOT WELD REPAIRS OR PLUGS) UNLESS APPROVED IN ADVANCE AND IN WRITING BY LIGO, REFER TO LIGO-E0900364.
- 10. NO REPAIRS SHALL BE MADE UNLESS APPROVED IN ADVANCE, AND IN WRITING, BY LIGO LABORATORY. IN GENERAL WELD REPAIRS AND PRESS FIT INSERT REPAIRS ARE NEVER ACCEPTABLE. THE MATERIAL USED MUST BE VIRGIN MATERIAL. SPECIAL CIRCUMSTANCES CAN BE REVIEWED IF AND WHEN BROUGHT TO THE ATTENTION OF LIGO CONTRACTING OFFICER'S REPRESENTATIVE (COTR) THROUGH THE MATERIAL REVIEW BOARD (MRB) PROCESS, REFER TO LIGO-E09000364.

REV.	DATE	DCN #	DRAWING TREE #
v3	12 July 2011	E1100663	E0900316

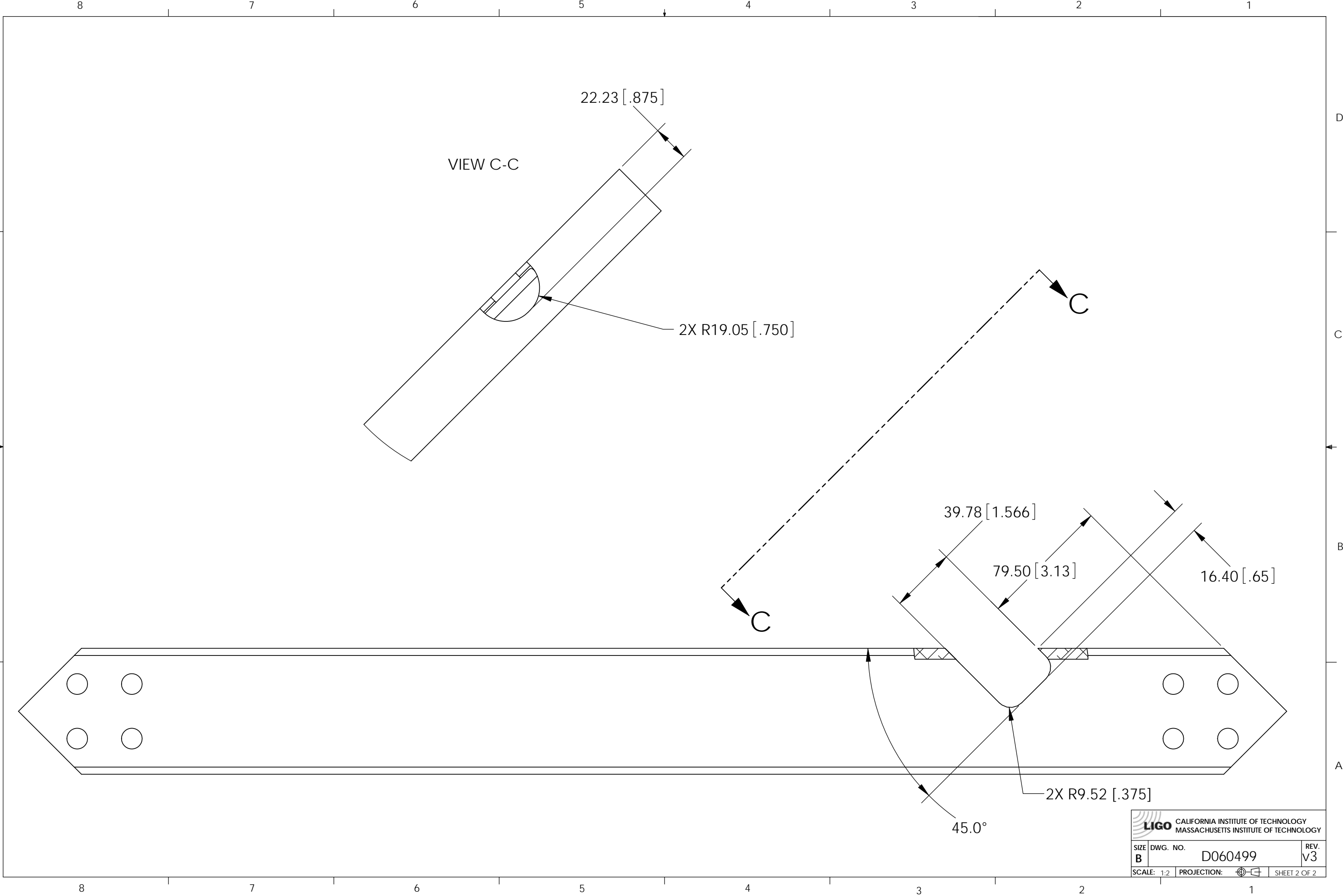



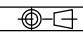
D060499, PART PDM REV: X-007, DRAWING PDM REV: X-003

NOTES AND TOLERANCES: (UNLESS OTHERWISE SPECIFIED)				LIGO CALIFORNIA INSTITUTE OF TECHNOLOGY MASSACHUSETTS INSTITUTE OF TECHNOLOGY		PART NAME	
DIMENSIONS ARE IN MM [INCHES]				1. INTERPRET DRAWING PER ASME Y14.5-1994.		aLIGO SUS, QUAD ITM/ETM, REM. CROSS MEMBER, (UP STR)	
TOLERANCES: .XX ± .2[.008] .XXX ± .127[.005]				2. REMOVE ALL SHARP EDGES, .76[.03] x 45°.		DESIGNER J.ODELL 11 Aug 2009	
ANGULAR ± .5°				3. DO NOT SCALE FROM DRAWING.		DRAFTER M.HILLARD 12 July 2011	
MATERIAL 6061-T6 Al		FINISH 63 µinch		NEXT ASSY D060492		SIZE DWG. NO. B D060499	
						REVISION v3	
						SCALE: 1:2 PROJECTION: SHEET 1 OF 2	

8 7 6 5 4 3 2 1

D060499, PART PDM REV: X-007, DRAWING PDM REV: X-003



 CALIFORNIA INSTITUTE OF TECHNOLOGY MASSACHUSETTS INSTITUTE OF TECHNOLOGY		
SIZE B	DWG. NO. D060499	REV. V3
SCALE: 1:2	PROJECTION: 	SHEET 2 OF 2