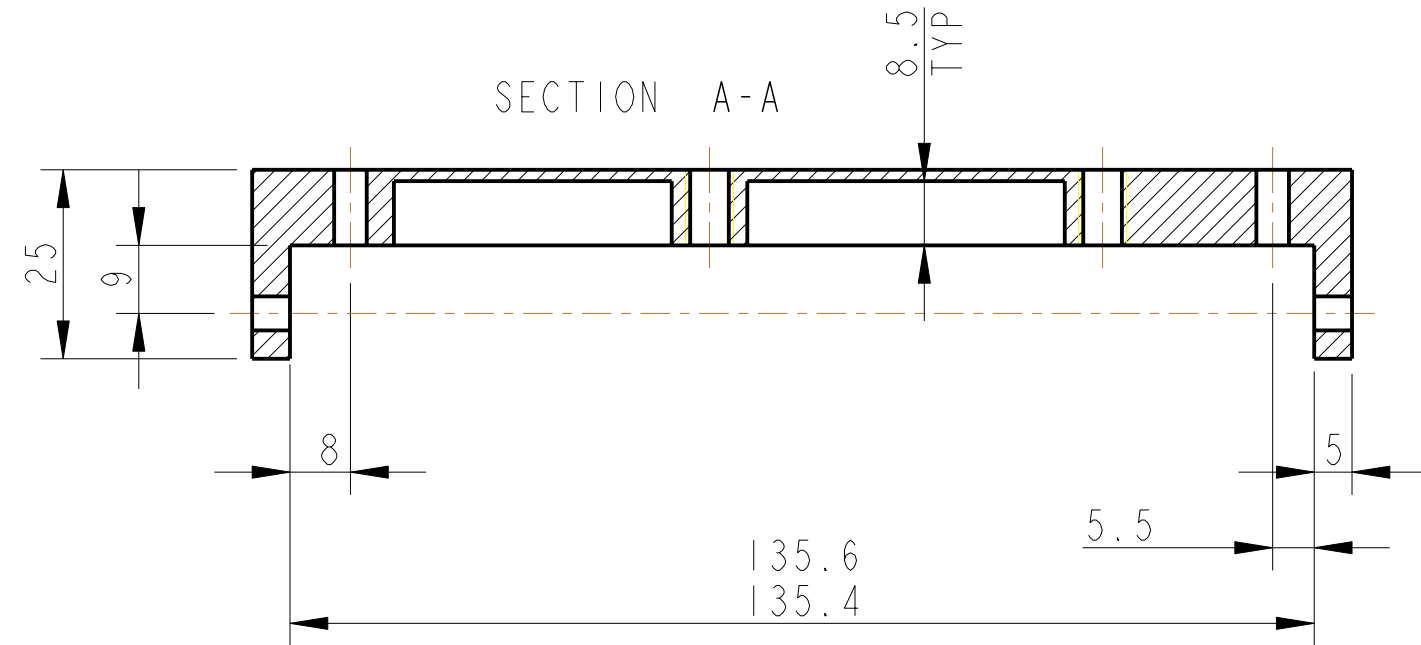
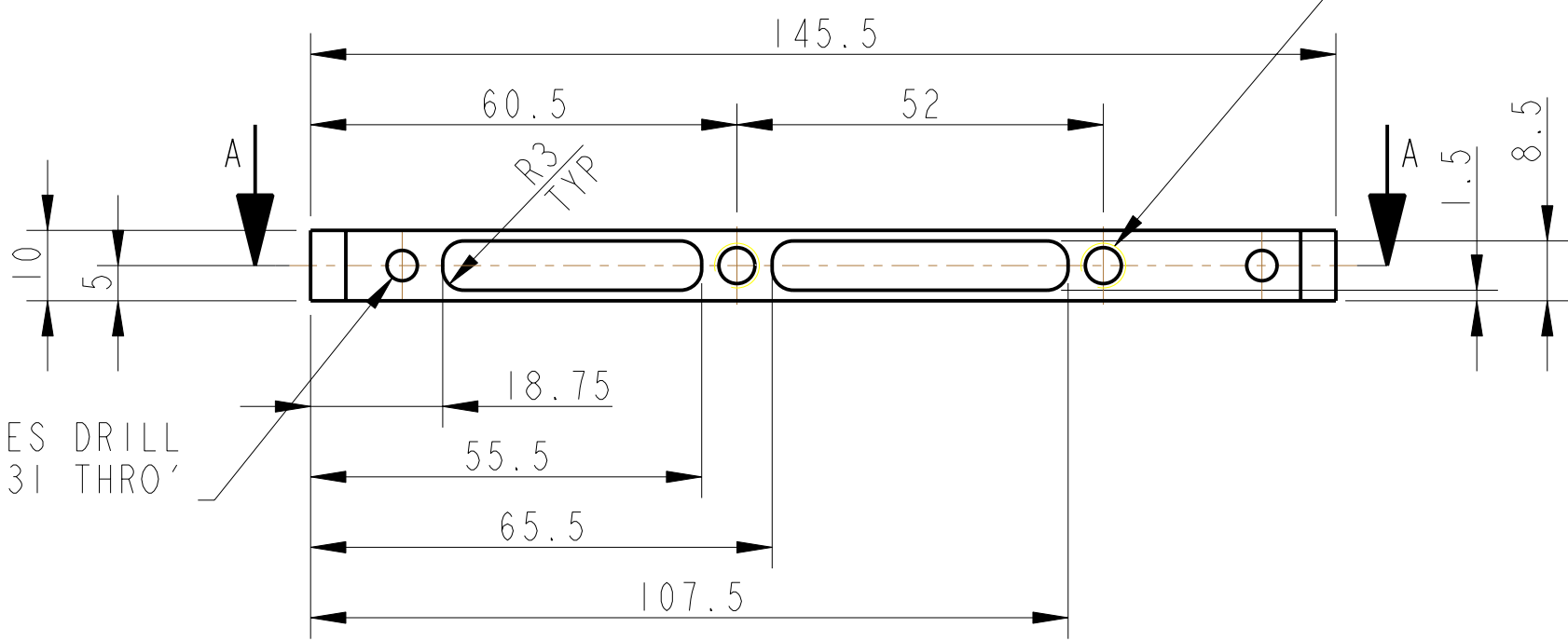


REV.	DATE	DCN #	DRAWING TREE #
A	30-OCT-06	E060260-00	
B	21/DEC/07	E060260-B	
C	22/JULY/08	E080372	

SECTION A-A

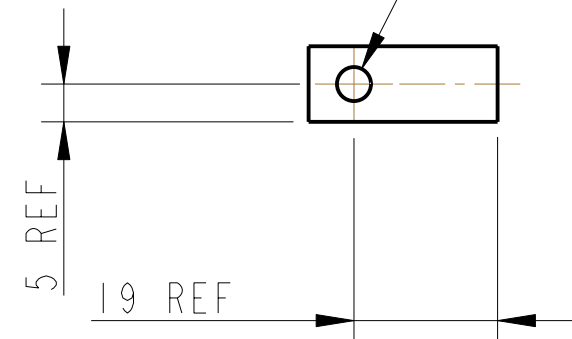


2-THRU' HOLES FOR 1/4-20 UNC X 1.5 D 1g HELICOILS. HELICOILS NOT TO BE FITTED.

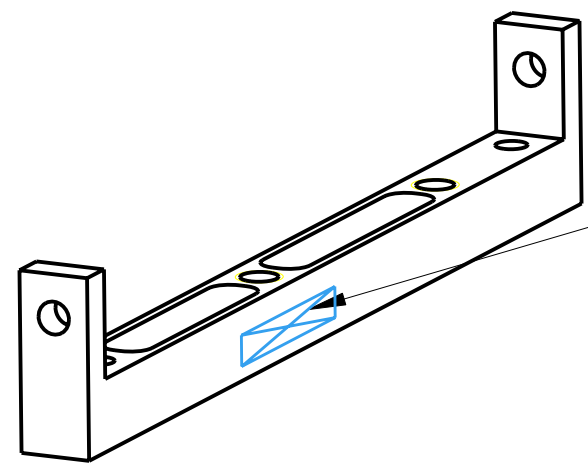


2 HOLES DRILL Ø4.31 THRO'

DRILL Ø4.5 THRO' AT BOTH ENDS



PART NO. (SEE NOTE 4) TO BE ETCHED OR STAMPED IN APPROX POSITION SHOWN.



NOTES: (UNLESS OTHERWISE SPECIFIED)

- REMOVE ALL SHARP EDGES, R.02 MIN.
- DO NOT SCALE FROM DRAWING.
- ALL MACHINING FLUIDS SHALL BE WATER SOLUBLE AND FREE OF SULFUR, CHLORINE AND SILICONE, SUCH AS CINCINNATI MILACRON'S CIMTECH 410 (STAINLESS STEEL)
- SCRIBE, ENGRAVE OR STAMP DRAWING PART NUMBER ON NOTED SURFACE OF PART AND A THREE DIGIT SERIAL NUMBER. SERIAL NUMBERS START AT 001 FOR THE FIRST PART AND PROCEED CONSECUTIVELY. USE .07" HIGH CHARACTERS. EXAMPLE: D020188- 001. A VIBRATORY TOOL MAY BE USED.

DIMENSIONS ARE IN mm [INCHES]
TOLERANCES:
X.XX ±0.2 mm
ANGULAR ±0.25 °

MATERIAL: AL ALLOY
5083 H4 OR 6061

FINISH: CLEAN
√μm [μin] Ra = 1.6

	NAME	DATE
DRAWN	NJS/FEL	13/JULY/06
CHECKED	MB	15/MAR/10
APPROVED	JOD	15/MAR/10

CALIFORNIA INSTITUTE OF TECHNOLOGY
MASSACHUSETTS INSTITUTE OF TECHNOLOGY
IGR, GLASGOW UNIVERSITY GEO 600 GROUP
RUTHERFORD APPLETON LABORATORIES

SYSTEM **aLIGO**

SUB-SYSTEM **SUS**

NEXT ASSY **QUAD LOWER STRUCTURE**

PART NAME **EARTHQUAKE-STOP MOUNTS-SHORT LOWER STRUCTURE**

SCALE 1:1 PROJECTION: SHEET 1 OF 1

DRG. NO. **D060476** REV **E.**