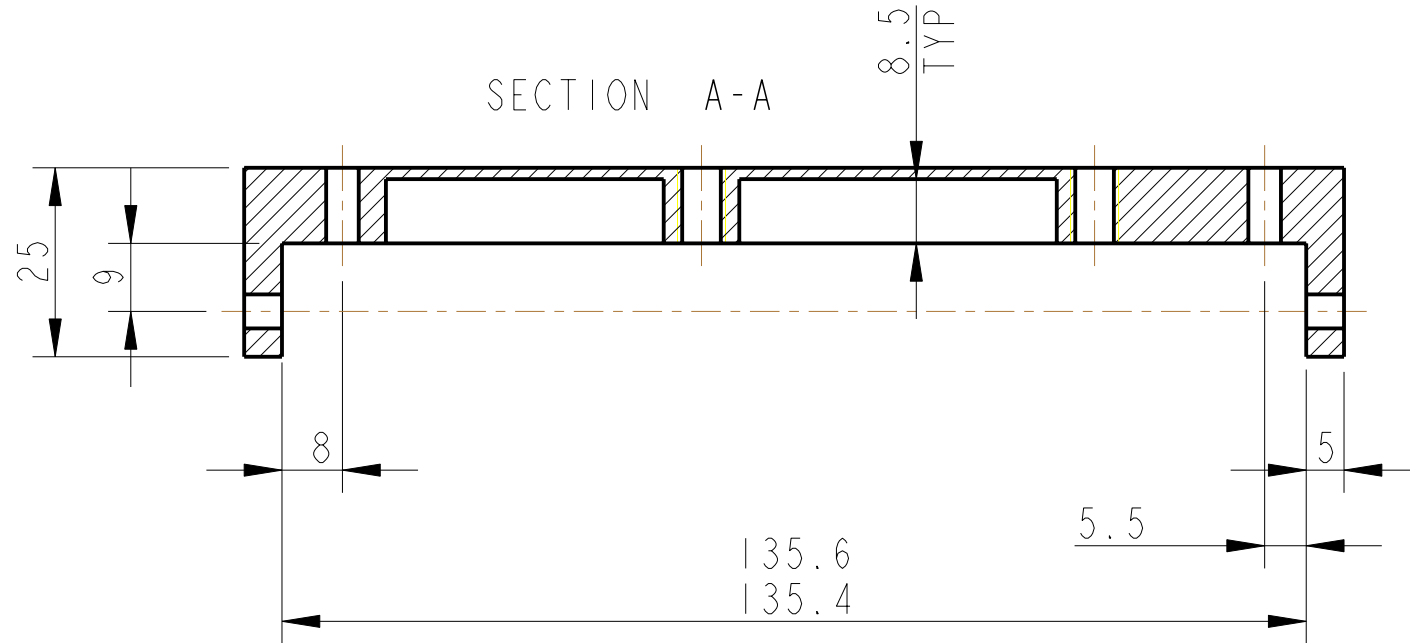
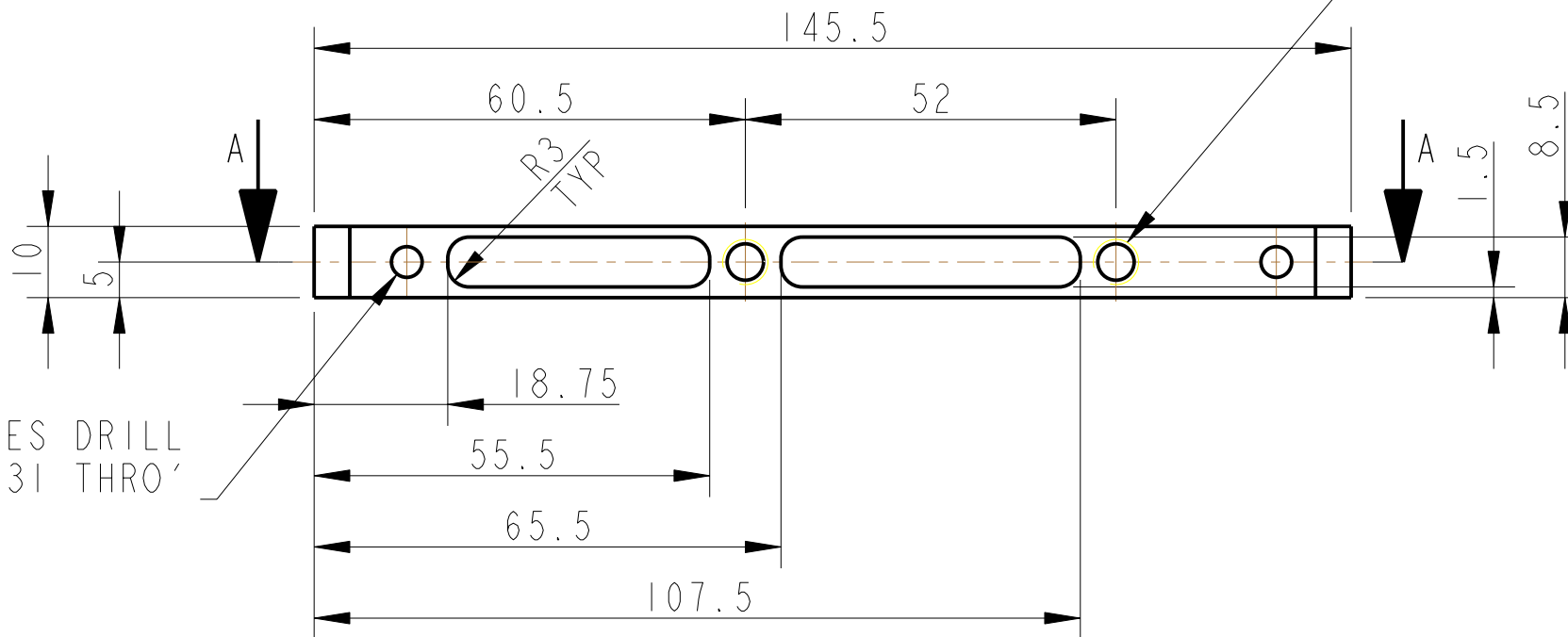


REV.	DATE	DCN #	DRAWING TREE #
A	30-OCT-06	E060260-00	
B	21/DEC/07	E060260-B	
C	22/JULY/08	E080372	

SECTION A-A

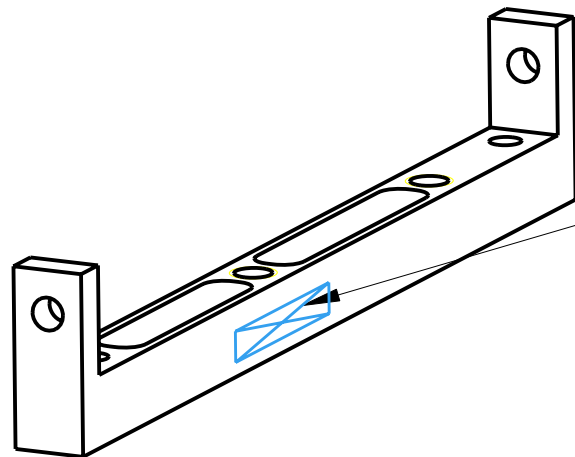
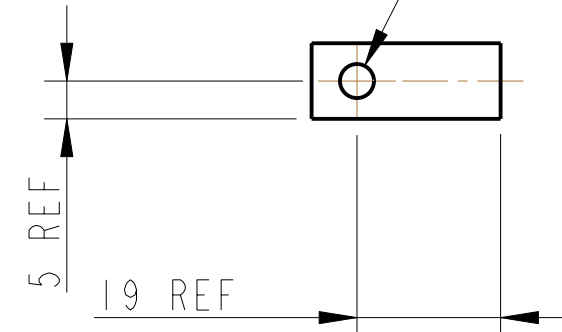


2-THRU' HOLES FOR 1/4-20 UNC X 1.5 D 1g HELICOILS. HELICOILS NOT TO BE FITTED.



2 HOLES DRILL $\varnothing 4.31$ THRO'

DRILL $\varnothing 4.5$ THRO' AT BOTH ENDS



PART NO. (SEE NOTE 4) TO BE ETCHED OR STAMPED IN APPROX POSITION SHOWN.

NOTES: (UNLESS OTHERWISE SPECIFIED)			CALIFORNIA INSTITUTE OF TECHNOLOGY MASSACHUSETTS INSTITUTE OF TECHNOLOGY IGR, GLASGOW UNIVERSITY GEO 600 GROUP RUTHERFORD APPLETON LABORATORIES	
1. REMOVE ALL SHARP EDGES, R.02 MIN.	DIMENSIONS ARE IN mm [INCHES]		SYSTEM ADVANCED LIGO	
2. DO NOT SCALE FROM DRAWING.	TOLERANCES:		SUB-SYSTEM SUS	
3. ALL MACHINING FLUIDS SHALL BE WATER SOLUBLE AND FREE OF SULFUR, CHLORINE AND SILICONE, SUCH AS CINCINNATI MILACRON'S CIMTECH 410 (STAINLESS STEEL)	X.XX ± 0.2 mm		NEXT ASSY QUAD N-PTYPE LOWER STRUCTURE	
4. SCRIBE, ENGRAVE OR STAMP DRAWING PART NUMBER ON NOTED SURFACE OF PART AND A THREE DIGIT SERIAL NUMBER. SERIAL NUMBERS START AT 001 FOR THE FIRST PART AND PROCEED CONSECUTIVELY. USE .07" HIGH CHARACTERS. EXAMPLE: D020188- 001. A VIBRATORY TOOL MAY BE USED.	ANGULAR $\pm 0.25^\circ$		PART NAME EARTHQUAKE-STOP MOUNTS-SHORT LOWER STRUCTURE	
MATERIAL: AL ALLOY 5083 H4 OR 6061	FINISH: CLEAN $\sqrt{\mu m}$ [μin] Ra = 1.6		SCALE 1:1	
	NAME	DATE	PROJECTION:	
DRAWN NJS/FEL	13/JULY/06		SHEET 1 OF 1	
CHECKED AJB	9/JUNE/08		REV D.	
APPROVED AJB	22/JULY/08		DRG. NO. D060476	