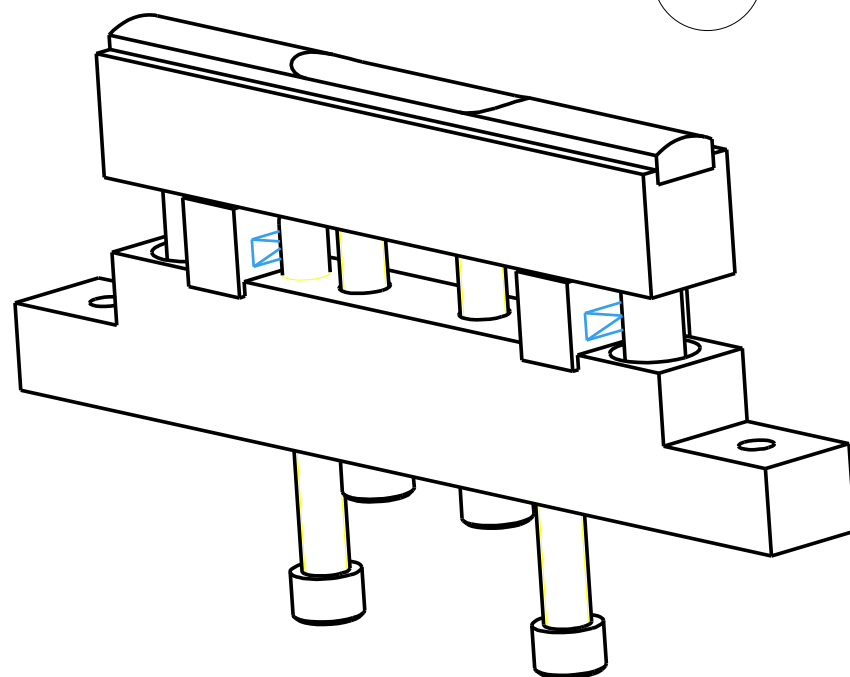
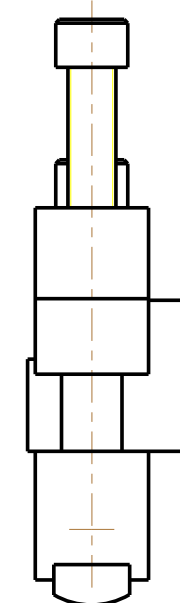
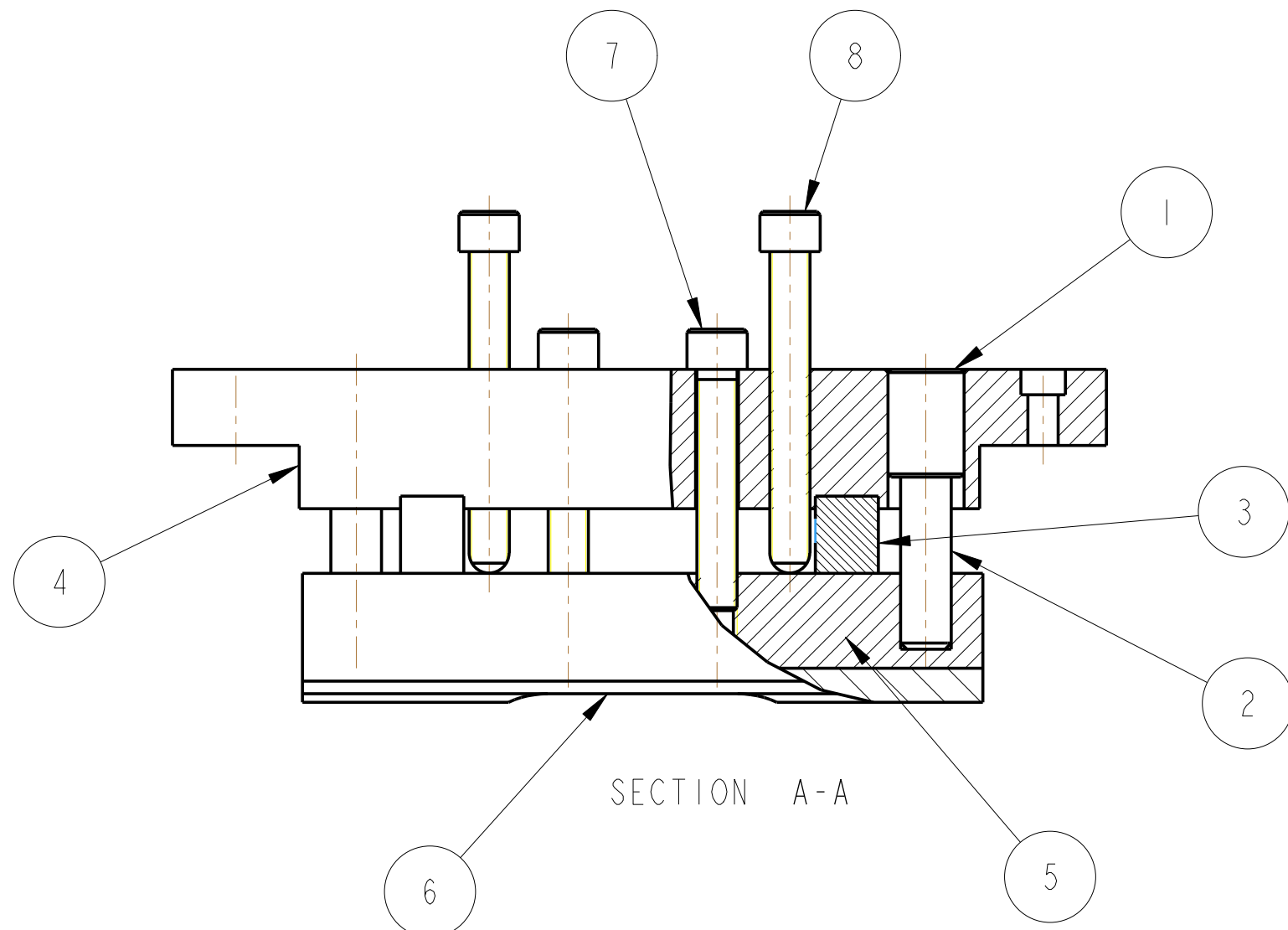


REV.	DATE	DCN #	DRAWING TREE #
A	30-OCT-06	E060260-00	.
B	21/DEC/07	E060260-B	.
C	21/JULY/08	E080372	.



SECTION A-A

ADDITIONAL NOTES:
 5. PART NO. D060450 TO BE ADJUSTED FOR DIFFERENT MASS POSITIONS
 6. D060445 TO BE REAMED AFTER PRESSING INTO D060458

ITEM	QTY	SPARE	TOTAL	PART NUMBER	DESCRIPTION	MATERIALS
1	2			D060445	BUSH; (ADJUSTABLE PAD ASSYS)	PFA 440 HP: -----
2	2			D060448	PIN; (ADJUSTABLE PAD ASSYS)	ST. STEEL: 304/316
3	2			D060450	SPACER # 4; (TEST MASS ADJUSTER)	AL. ALLOY: 5083 H4 OR 6061
4	1			D060458	BASE BAR; (ADJUSTABLE STOP MECHANISM)	AL. ALLOY: 5083 H4 OR 6061
5	1			D060459	ADJUSTABLE PAD JAW; SHORT	AL. ALLOY: 5083 H4 OR 6061
6	1			D060460	ADJUSTABLE PAD; ADJUSTABLE PAD ASSY (SHORT)	PFA 440 HP: -----
7	2				1/4-20 UNC X 1.5" CAP HEAD; .	ST STEEL 316
8	2				1/4" 20 UNC X 2" CAP HEAD, SPHERICAL TIP; .	ST STEEL 316

PARTS LIST

NOTES: (UNLESS OTHERWISE SPECIFIED)

- REMOVE ALL SHARP EDGES, R.02 MIN.
- DO NOT SCALE FROM DRAWING.
- ALL MACHINING FLUIDS SHALL BE WATER SOLUBLE AND FREE OF SULFUR, CHLORINE AND SILICONE, SUCH AS CINCINNATI MILACRON'S CIMTECH 410 (STAINLESS STEEL)
- SCRIBE, ENGRAVE OR STAMP DRAWING PART NUMBER ON NOTED SURFACE OF PART AND A THREE DIGIT SERIAL NUMBER. SERIAL NUMBERS START AT 001 FOR THE FIRST PART AND PROCEED CONSECUTIVELY. USE .07" HIGH CHARACTERS. EXAMPLE: D020188- 001. A VIBRATORY TOOL MAY BE USED.

DIMENSIONS ARE IN mm [INCHES]
 TOLERANCES:
 X.XX ±0.2 mm
 ANGULAR ±0.25 °

MATERIAL: SEE PARTS LIST

FINISH:
 √μm [μin] Ra = -----

	NAME	DATE
DRAWN	I WILMUT	01/AUG/06
CHECKED	AJB	--/---/---
APPROVED	AJB	22/JULY/08

CALIFORNIA INSTITUTE OF TECHNOLOGY
 MASSACHUSETTS INSTITUTE OF TECHNOLOGY
 IGR, GLASGOW UNIVERSITY GEO 600 GROUP
 RUTHERFORD APPLETON LABORATORIES

SYSTEM **ADVANCED LIGO**
 SUB-SYSTEM **SUS**
 NEXT ASSY **QUAD N-PTYPE LOWER STRUCTURE**
 PART NAME **ADJUSTABLE PAD ASSEMBLY SHORT**

SCALE 1:1 PROJECTION: SHEET 1 OF 1