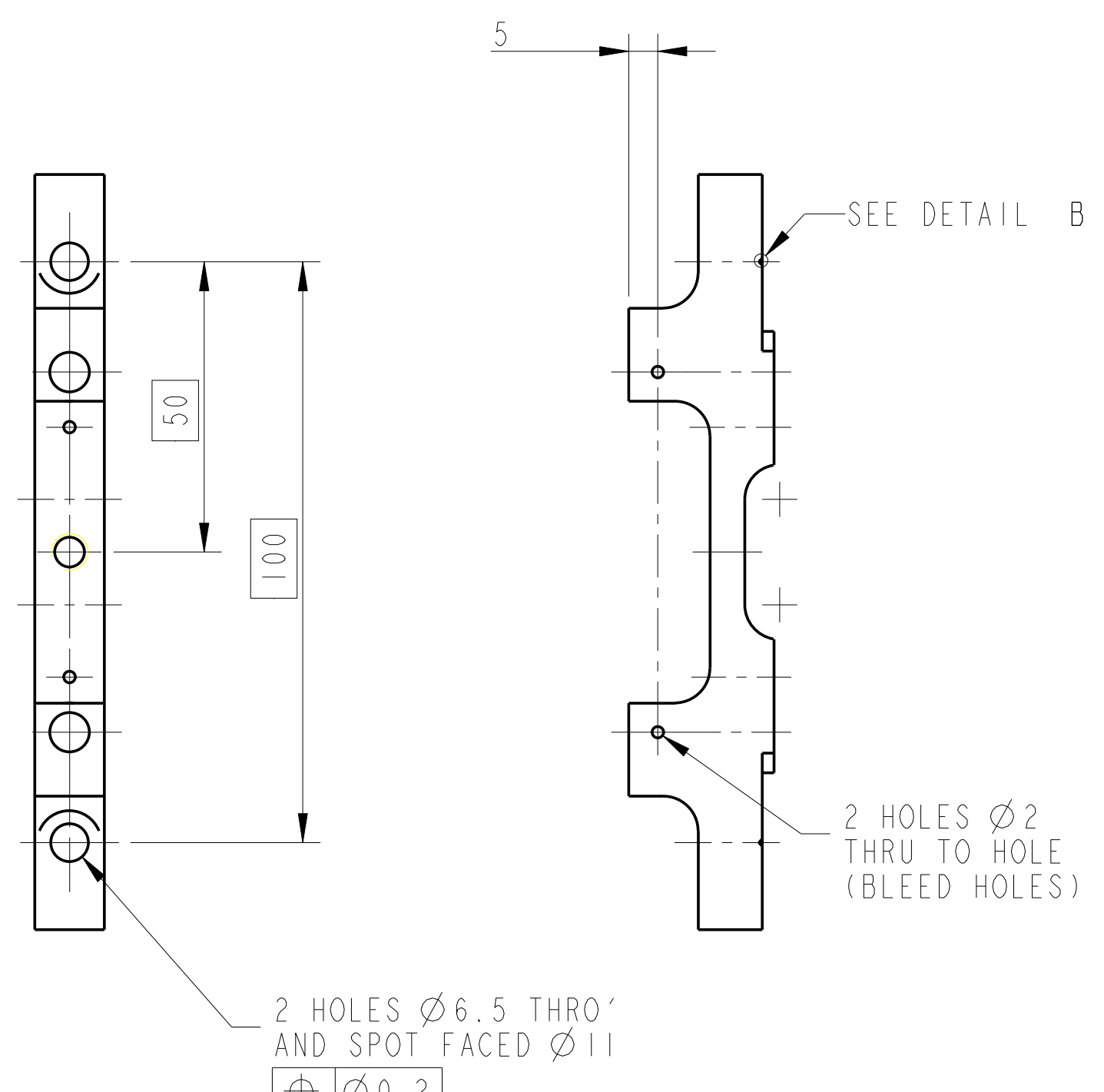
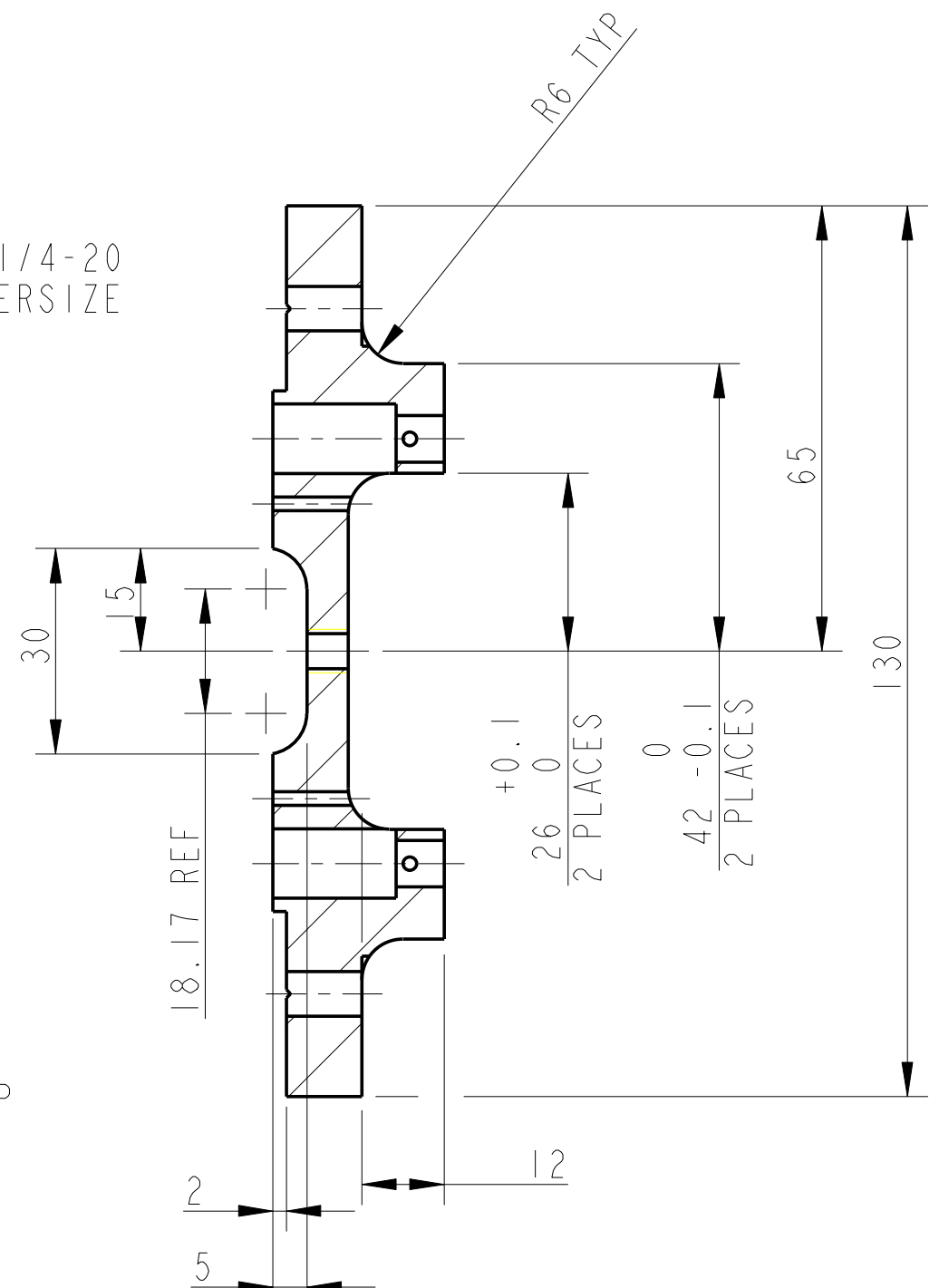
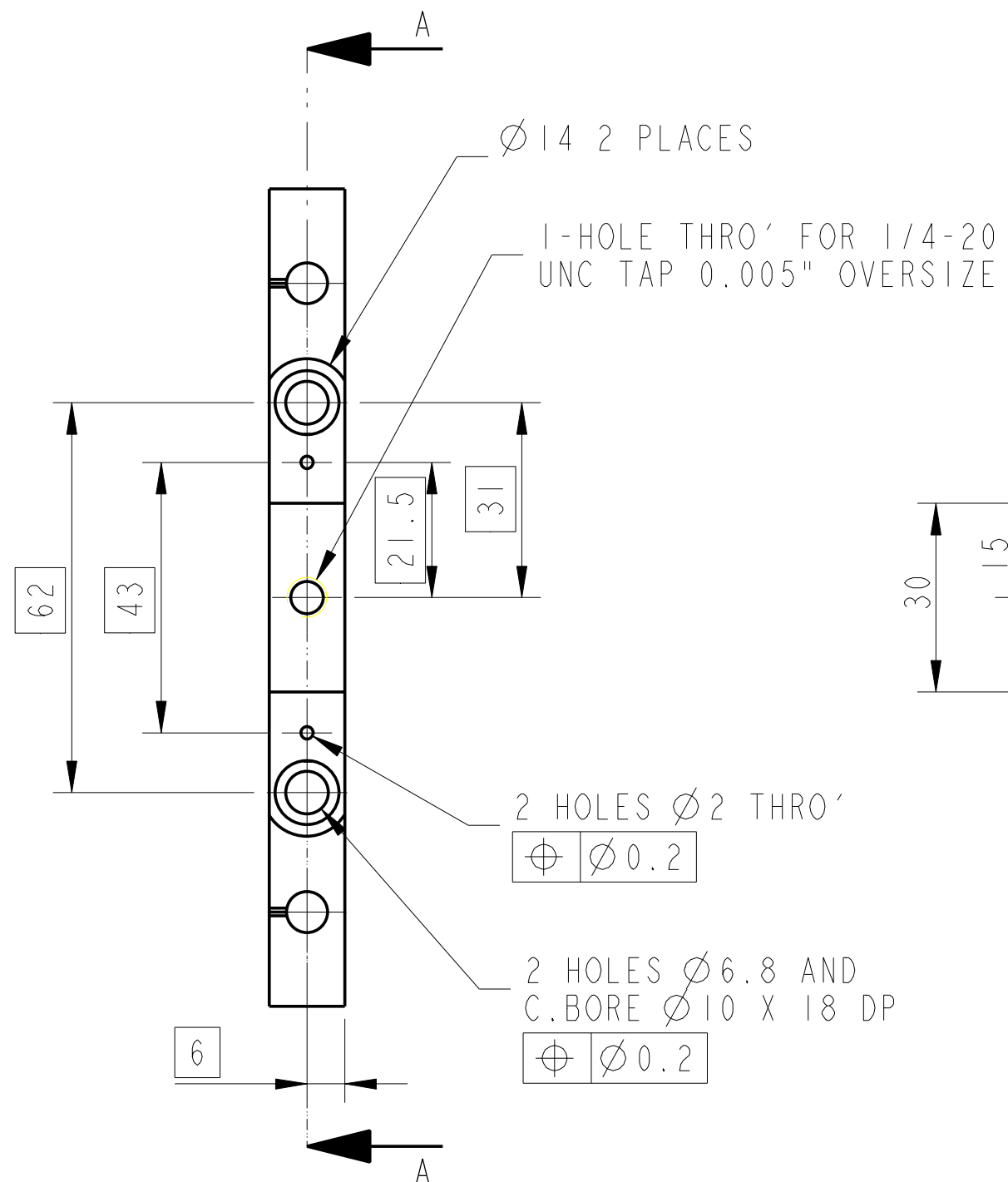
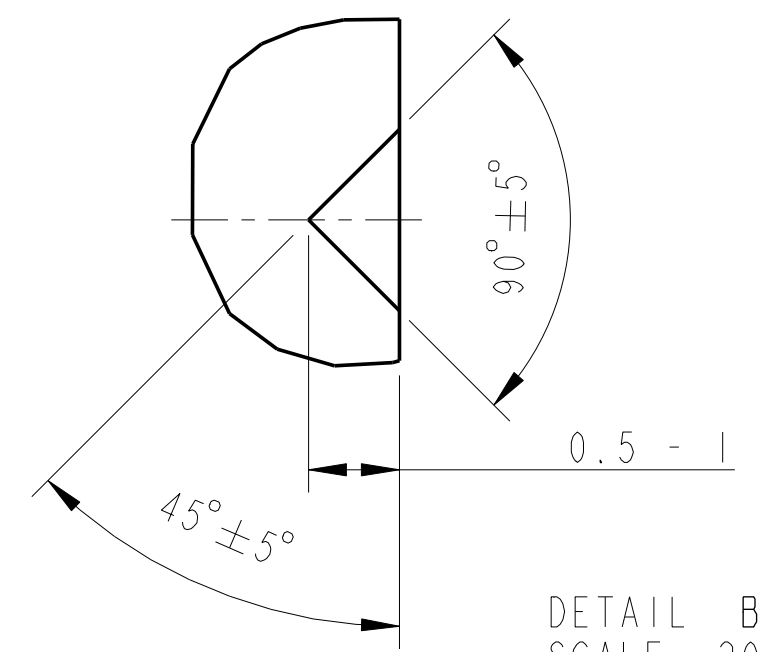
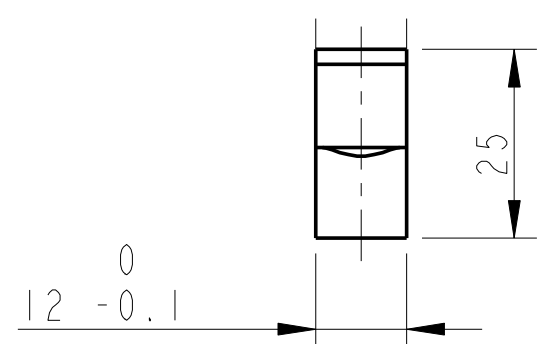
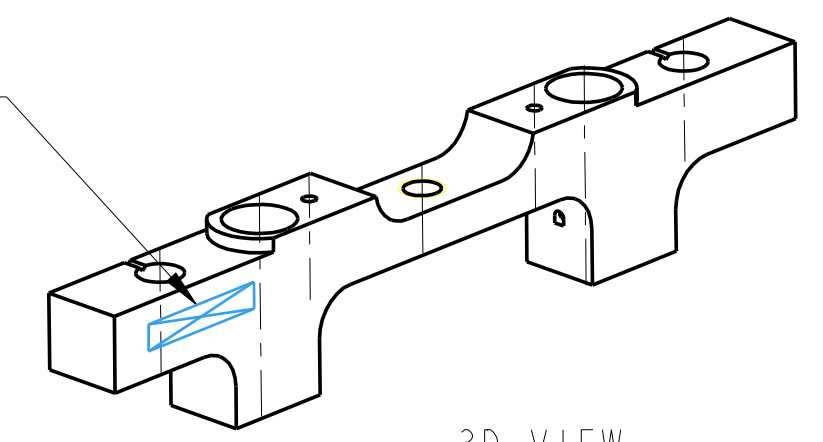


REV.	DATE	DCN #	DRAWING TREE #
A	9/OCT/06	E060248	.
B	17/DEC/07	E060248-B	.



SECTION A-A

PART NO. (SEE NOTE 4) TO BE ETCHED OR STAMPED IN APPROX POSITION SHOWN.



DETAIL B
SCALE 20:1
2 PLACES

NOTES: (UNLESS OTHERWISE SPECIFIED)			
1. REMOVE ALL SHARP EDGES. R.02 MIN.	DIMENSIONS ARE IN mm [INCHES]		
2. DO NOT SCALE FROM DRAWING.	X.XX ± 0.2 mm		
3. ALL MACHINING FLUIDS SHALL BE WATER SOLUBLE AND FREE OF SULFUR, CHLORINE AND SILICONE. SUCH AS CINCINNATI MILACRON'S CIMTECH 410 (STAINLESS STEEL)	ANGULAR $\pm 0.25^\circ$		
4. SCRIBE, ENGRAVE OR STAMP DRAWING PART NUMBER ON NOTED SURFACE OF PART AND A THREE DIGIT SERIAL NUMBER. SERIAL NUMBERS START AT 001 FOR THE FIRST PART AND PROCEED CONSECUTIVELY. USE .07" HIGH CHARACTERS. EXAMPLE: D020188-001. A VIBRATORY TOOL MAY BE USED.	MATERIAL: AL ALLOY 5083		
	FINISH: CLEAN, GREASE FREE	Ro = 1.6	
	$\sqrt{\mu m}$ [μin]		
	NAME	DATE	SIZE
	J O'DELL	27/OCT/05	C
	CHECKED	07/DEC/05	DRG. NO.
	APPROVED	08/DEC/05	D060407
			REV
			G.
SCALE 1:1 PROJECTION: SHEET 1 OF 1			

CALIFORNIA INSTITUTE OF TECHNOLOGY MASSACHUSETTS INSTITUTE OF TECHNOLOGY 1GR, GLASGOW UNIVERSITY GEO 600 GROUP RUTHERFORD APPLETON LABORATORIES	
SYSTEM ADVANCED LIGO	
SUB-SYSTEM SUS	
NEXT ASSY TOP MASS QUAD N-PTYPE	
PART NAME OSEM & ECD UNIT BACKBONE	
PART NO. D060407	