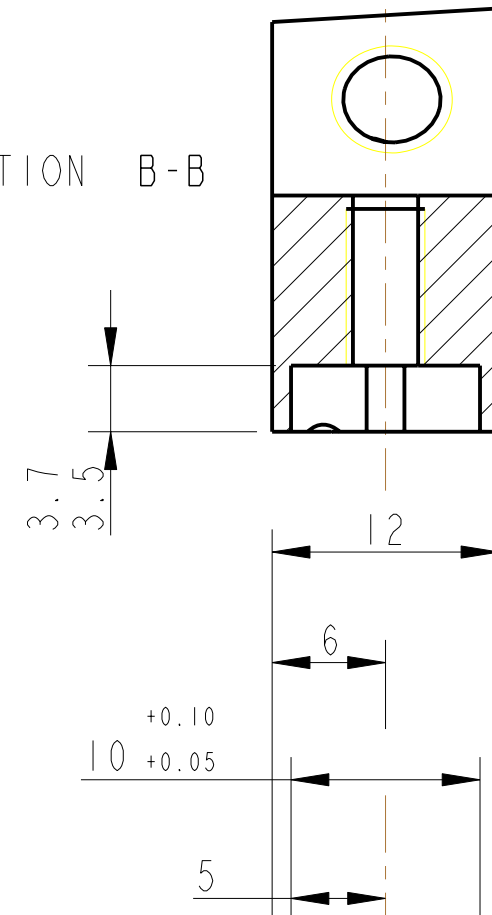


REV.	DATE	DCN #	DRAWING TREE #
A	19/OCT/06.	E060248	
B	17/DEC/07	E060248-B	
H	15/JULY/08	E080368	

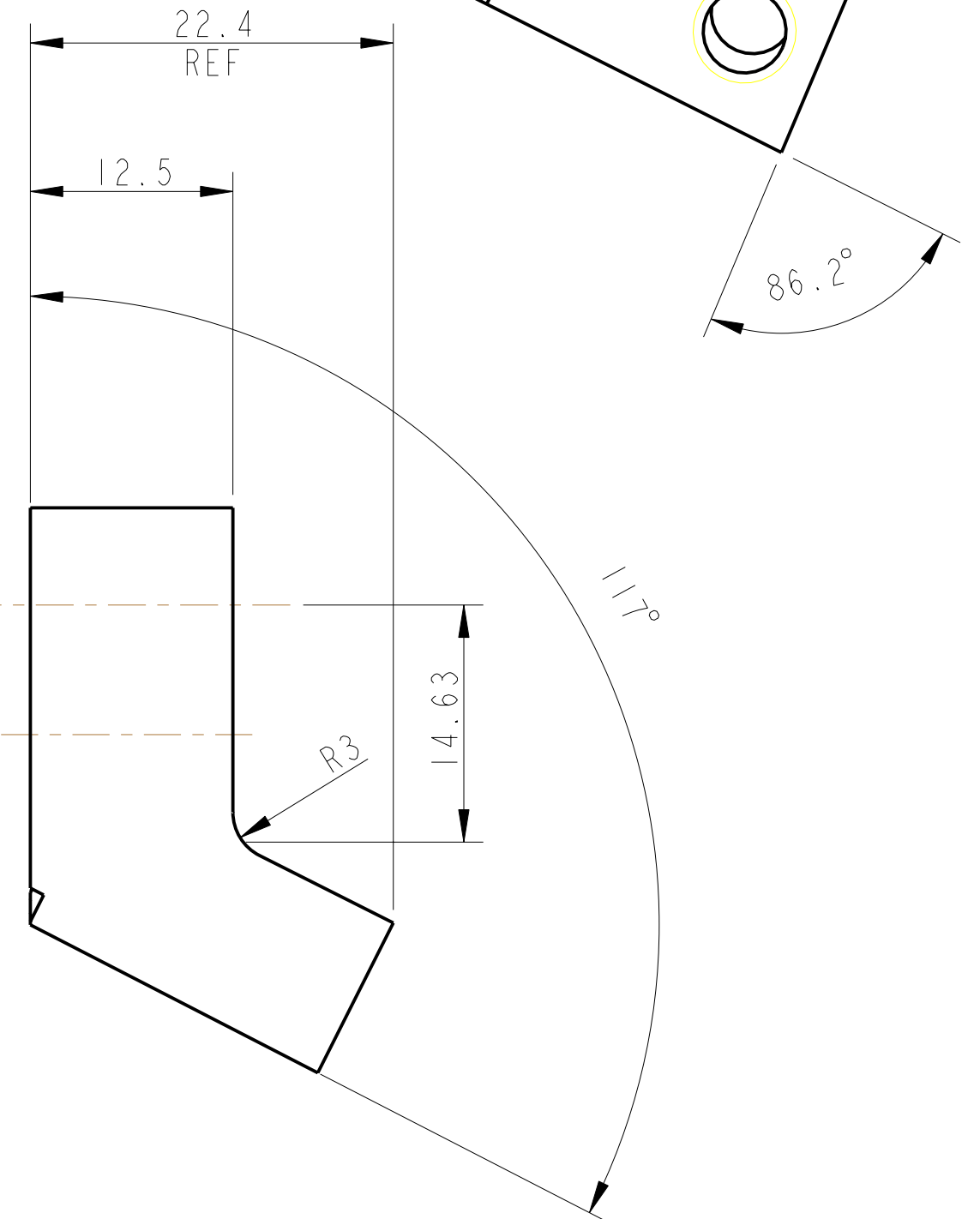
SECTION B-B



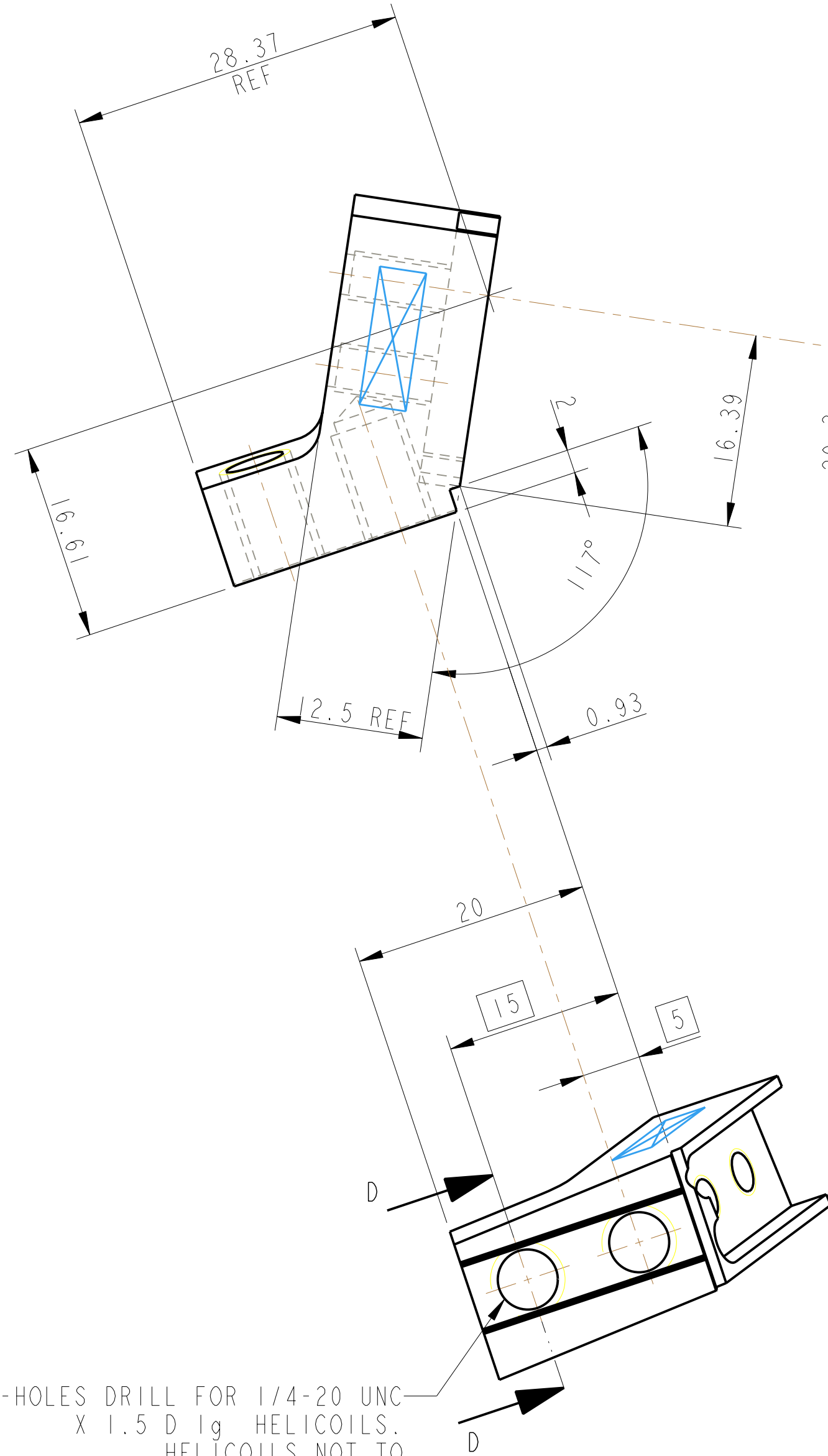
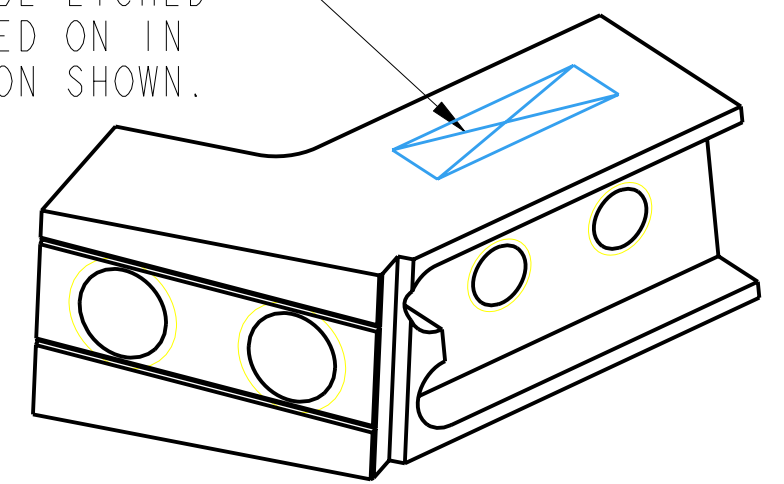
2-HOLES FOR 8-32 UNC X 1.5 D lg HELICOILS. HELICOILS NOT TO BE FITTED.

$\pm 0.2$

R2 FULL RAD TYP



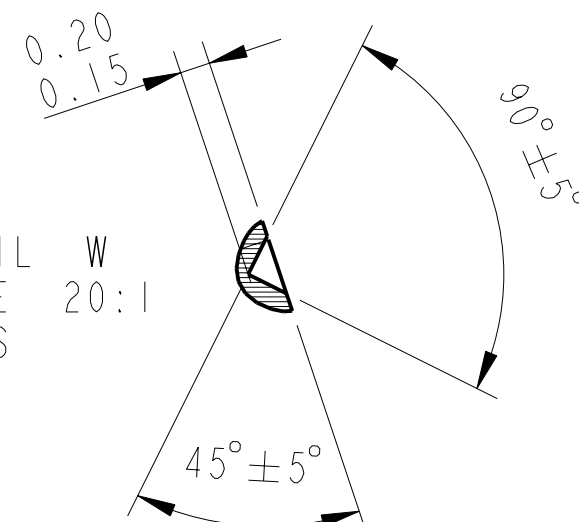
PART NO. (SEE NOTE 4) NUMBER TO BE ETCHED OR STAMPED ON IN APPROX POSITION SHOWN.



2-HOLES DRILL FOR 1/4-20 UNC X 1.5 D lg HELICOILS. HELICOILS NOT TO BE FITTED.

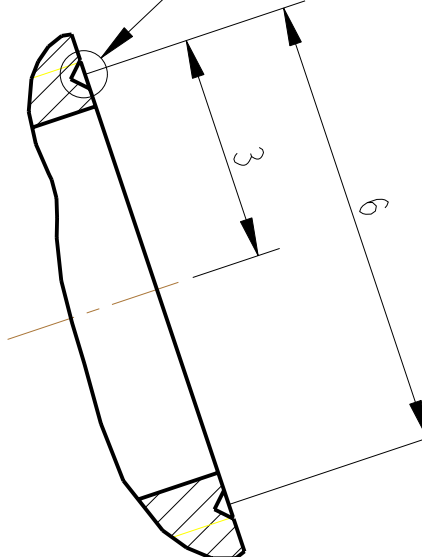
$\pm 0.2$

DETAIL SCALE 20:1



SEE DETAIL W

SECTION D-D SCALE 10:1



NOTES: (UNLESS OTHERWISE SPECIFIED)		DIMENSIONS ARE IN mm (INCHES)		TOLERANCES:	
1.	REMOVE ALL SHARP EDGES, R.02 MIN.	X.XX	$\pm 0.25$ mm	ANGULAR	$\pm 0.25^\circ$
2.	DO NOT SCALE FROM DRAWING.	MATERIAL:	ST STEEL 304/316	FINISH:	CLEAN, GREASE FREE
3.	ALL MACHINING FLUIDS SHALL BE WATER SOLUBLE AND FREE OF SULFUR, CHLORINE AND SILICONE, SUCH AS CINCINNATI MILACRON'S CIMTECH 410 (STAINLESS STEEL)	Ro	1.6	SCALE	5:2
4.	SCRIBE, ENGRAVE OR STAMP DRAWING PART NUMBER ON NOTED SURFACE OF PART AND A THREE DIGIT SERIAL NUMBER. SERIAL NUMBERS START AT 001 FOR THE FIRST PART AND PROCEED CONSECUTIVELY. USE .07" HIGH CHARACTERS. EXAMPLE: D020188-001. A VIBRATORY TOOL MAY BE USED.	DATE	11/JULY/06	PROJECTION	1 OF 1

CALIFORNIA INSTITUTE OF TECHNOLOGY		GLASGOW UNIVERSITY GEO 600 GROUP	
RUTHERFORD APPLETON LABORATORIES		RUTHERFORD APPLETON LABORATORIES	
SYSTEM	aLIGO	DRG. NO.	D060395
SUB-SYSTEM	SUS - QUAD	SCALE	5:2
NEXT ASSY	TOP MASS QUAD	PROJECTION	1 OF 1
PART NAME	WIRE CLAMP BODY (TOP MASS WIRE CLAMP)	REV	J.