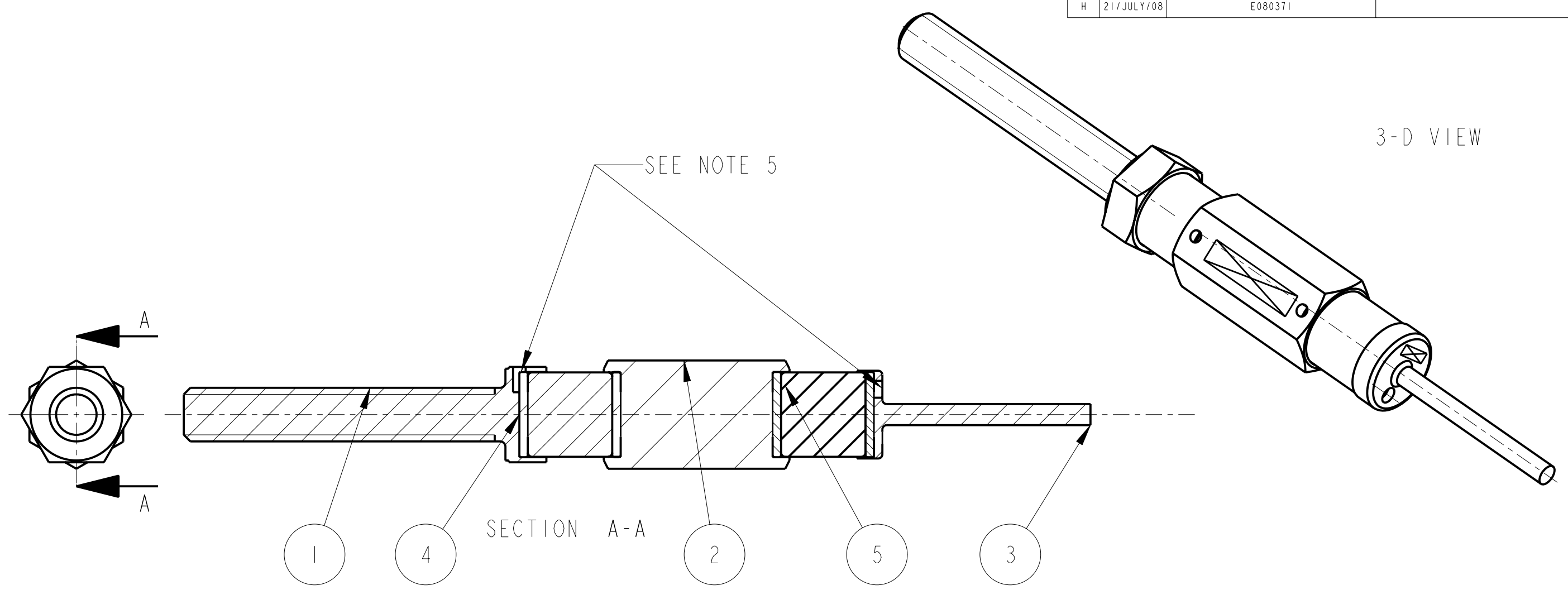


REV.	DATE	DCN #	DRAWING TREE #
A	18/OCT/06	E060247	.
B	19/DEC/07	E060247-B	.
H	21/JULY/08	E080371	.



ADDITIONAL NOTES:

5. STAINLESS STEEL PLUGS ARE PRESS FITTED IN TO ALU AND SS PARTS, MANUFACTURERS NOT TO FIT THE DISKS

ITEM	QTY	SPARE	TOTAL	PART NUMBER	DESCRIPTION	MATERIALS
1	1			D060392	MAGNET RETAINER: (MODIFIED 1/4-20 HEX HEAD SCREW 1.5" LONG)	STAINLESS STEEL: 316
2	1			D060394	SPACER: UI MASS MAGNET AND FLAG	AL ALLOY: 5082 OR 6061
3	1			D060400	OSEM MAGNET FLAG: (MEGNETIC DESIGN)	ALUMINIUM: 5082
4	4			D060401	MAGNETIC PLUG: .	STAINLESS STEEL: 416
5	2			D0901344	10MM DIA X 10MM MAGNET: .	AS PAR SPEC: -----

PARTS LIST			NOTES: (UNLESS OTHERWISE SPECIFIED)	
<p>1. REMOVE ALL SHARP EDGES, R.02 MIN.</p> <p>2. DO NOT SCALE FROM DRAWING.</p> <p>3. ALL MACHINING FLUIDS SHALL BE WATER SOLUBLE AND FREE OF SULFUR, CHLORINE AND SILICONE, SUCH AS CINCINNATI MILACRON'S CIMTECH 410 (STAINLESS STEEL)</p> <p>4. SCRIBE, ENGRAVE OR STAMP DRAWING PARTNUMBER ON NOTED SURFACE OF PART AND A THREE DIGIT SERIAL NUMBER. SERIAL NUMBERS START AT 001 FOR THE FIRST PART AND PROCEED CONSECUTIVELY. USE .07" HIGH CHARACTERS. EXAMPLE: D020188- 001. A VIBRATORY TOOL MAY BE USED.</p>			DIMENSIONS ARE IN mm [INCHES]	
			TOLERANCES:	
			X.XX ±0.2 mm	
			ANGULAR ±0.25 °	
MATERIAL: N/A			FINISH: AS DRW	
			√μm [μin] Ra = -----	
DRAWN: I WILMUT 10/AUG/06			SIZE: B	DRG. NO. D060393
CHECKED: AJB 11/JUNE/08			SCALE: 2:1	PROJECTION:
APPROVED: AJB 21/JULY/08			SHEET 1 OF 1	REV. H.

CALIFORNIA INSTITUTE OF TECHNOLOGY  
 MASSACHUSETTS INSTITUTE OF TECHNOLOGY  
 IGR, GLASGOW UNIVERSITY GEO 600 GROUP  
 RUTHERFORD APPLETON LABORATORIES

SYSTEM: **ADVANCED LIGO**  
 SUB-SYSTEM: **SUS**  
 NEXT ASSY: **QUAD N-PTYPE UI MASS**  
 PART NAME: **UI MASS MAGNET AND FLAG MOUNT**

SCALE: 2:1 PROJECTION: SHEET 1 OF 1