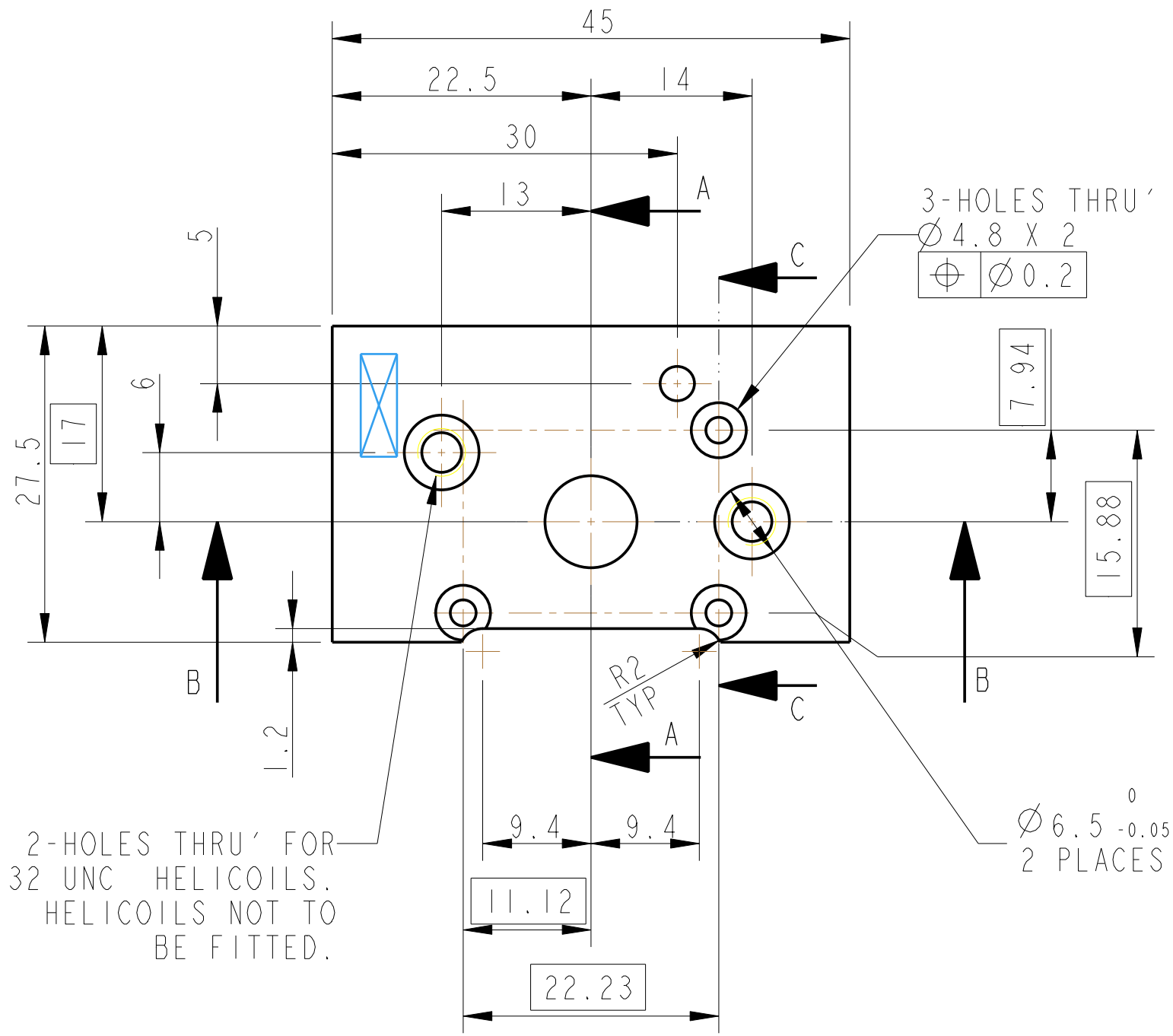
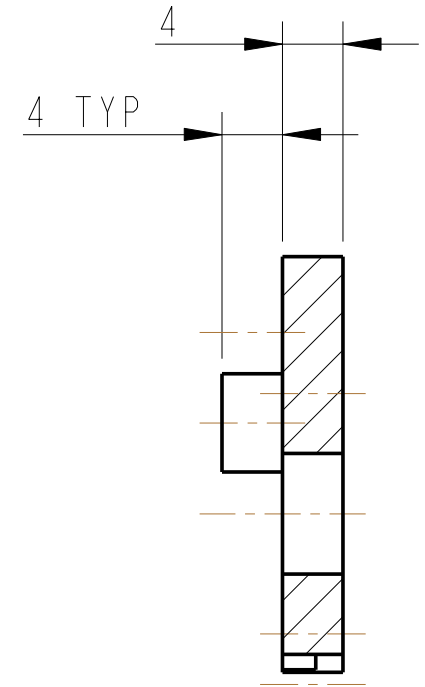
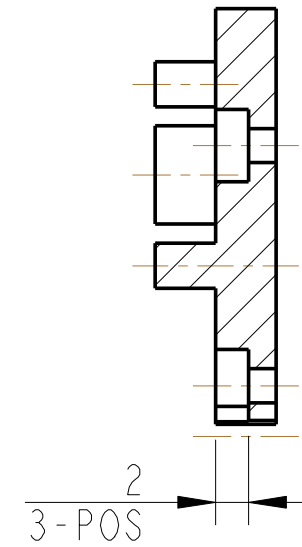


REV.	DATE	DCN #	DRAWING TREE #
A	18/OCT/06	E060247	
B	19/DEC/07	E060247-B	

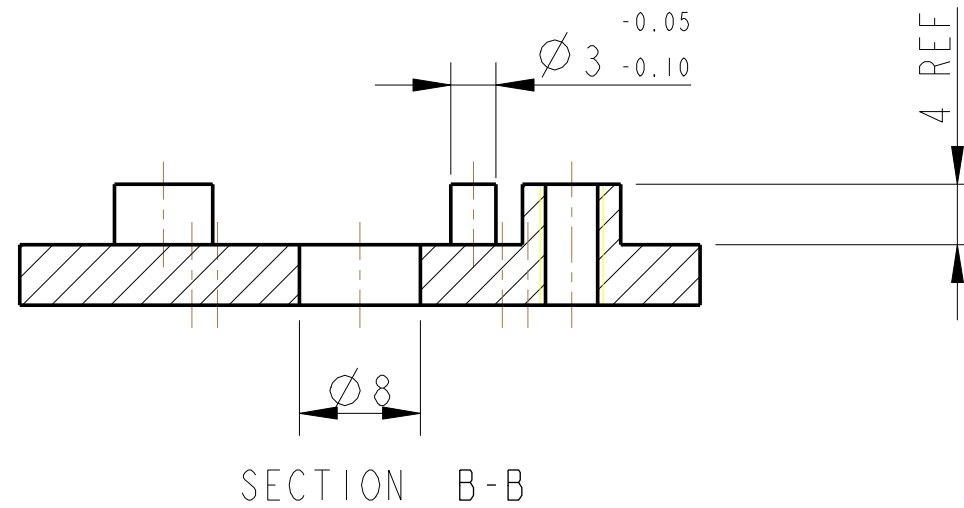
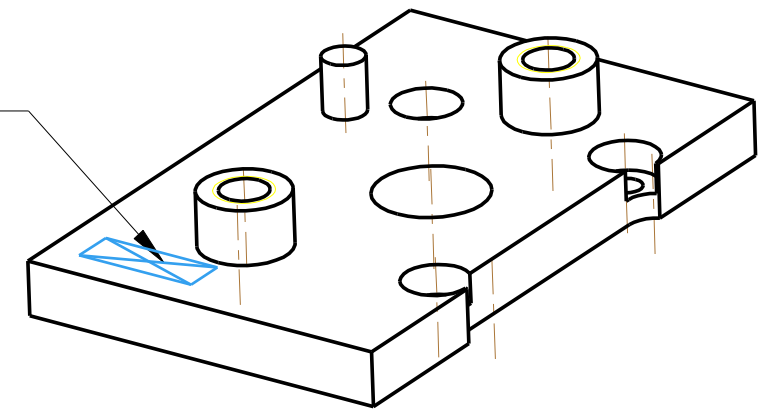


SECTION C-C



SECTION A-A

PART NO. (SEE NOTE 4) TO BE ETCHED OR STAMPED IN APPROX POSITION SHOWN.



SECTION B-B

NOTES: (UNLESS OTHERWISE SPECIFIED)			DIMENSIONS ARE IN mm [INCHES]		TOLERANCES:	
1.	REMOVE ALL SHARP EDGES, R.02 MIN.		X.XX ±0.2 mm			
2.	DO NOT SCALE FROM DRAWING.		ANGULAR ±0.25 °			
3.	ALL MACHINING FLUIDS SHALL BE WATER SOLUBLE AND FREE OF SULFUR, CHLORINE AND SILICONE, SUCH AS CINCINNATI MILACRON'S CIMTECH 410 (STAINLESS STEEL)					
4.	SCRIBE, ENGRAVE OR STAMP DRAWING PARTNUMBER ON NOTED SURFACE OF PART AND A THREE DIGIT SERIAL NUMBER. SERIAL NUMBERS START AT 001 FOR THE FIRST PART AND PROCEED CONSECUTIVELY. USE .07" HIGH CHARACTERS. EXAMPLE: D020188- 001. A VIBRATORY TOOL MAY BE USED.					
MATERIAL:			AL ALLOY		5083 OR 6061	
FINISH:			CLEAN & DE-GREASED		Ra = 1.6	
DRAWN:			J O'DELL		20/JUN/07	
CHECKED:			IW		20/JUN/07	
APPROVED:			IW		20/JUN/07	
SYSTEM:			ADVANCED LIGO			
SUB-SYSTEM:			SUS			
NEXT ASSY:			QUAD N-PTYPE UI MASS			
PART NAME:			ADJUSTER			
			UI MASS OSEM MOUNT			
SCALE:			2:1		PROJECTION:	
DRG. NO.:			D060389		SHEET 1 OF 1	