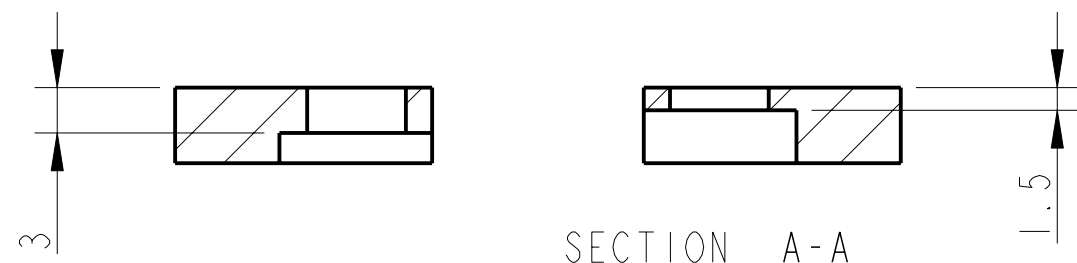
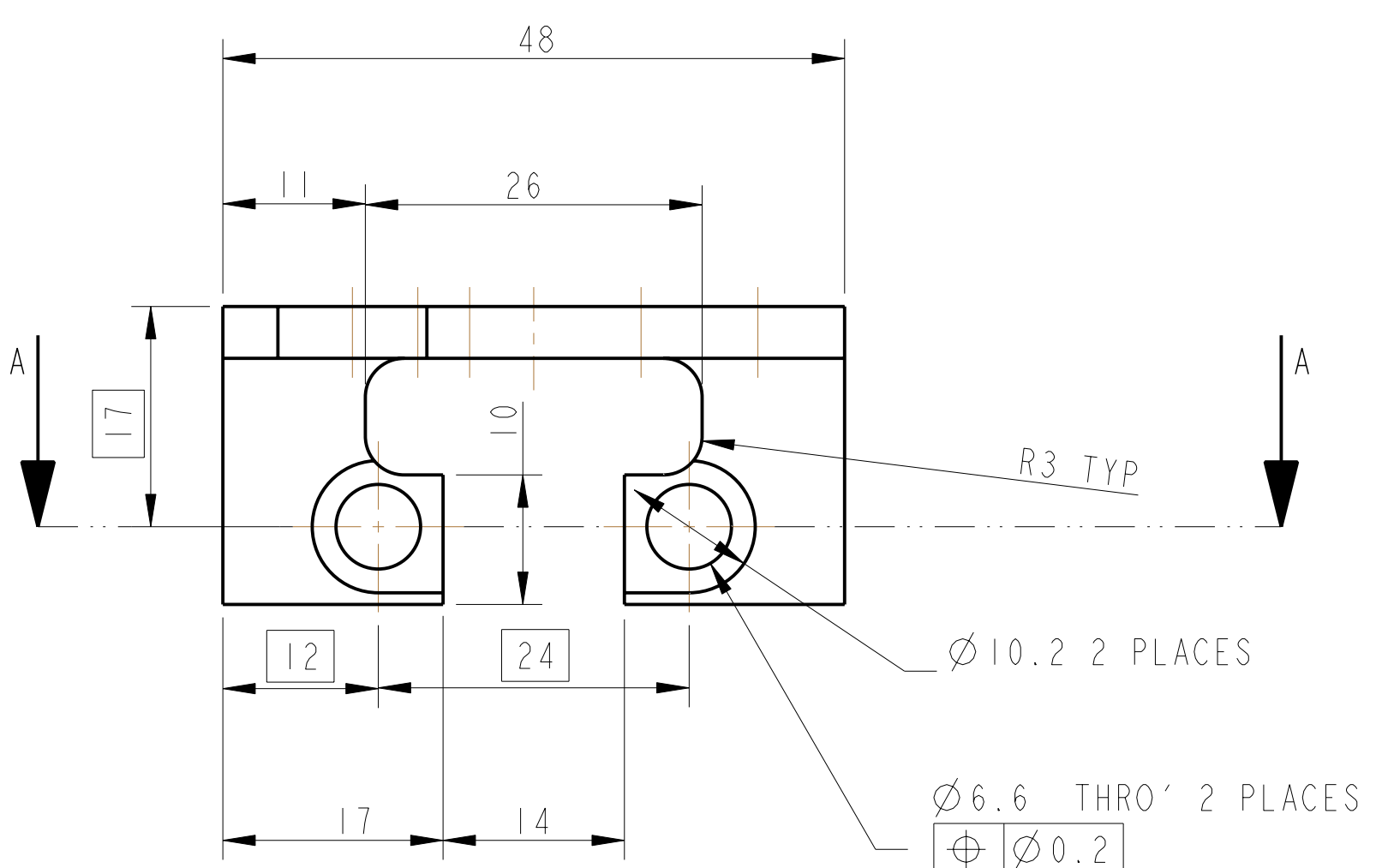


REV.	DATE	DCN #	DRAWING TREE #
A	18/OCT/06	E060247	
B	19/DEC/07	E060247-B	
K	21/JULY/08	E080371	



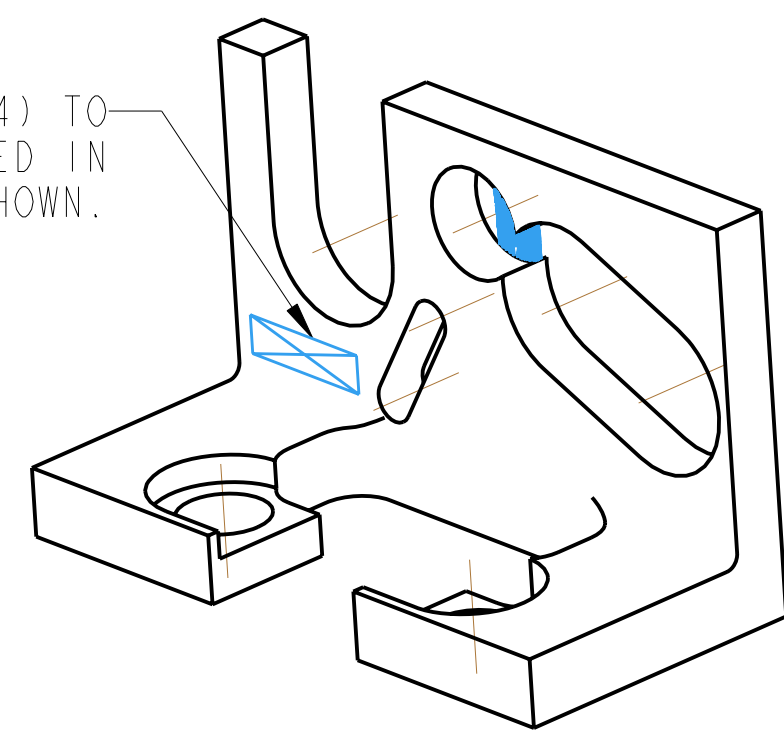
SECTION A-A



Ø10.2 2 PLACES

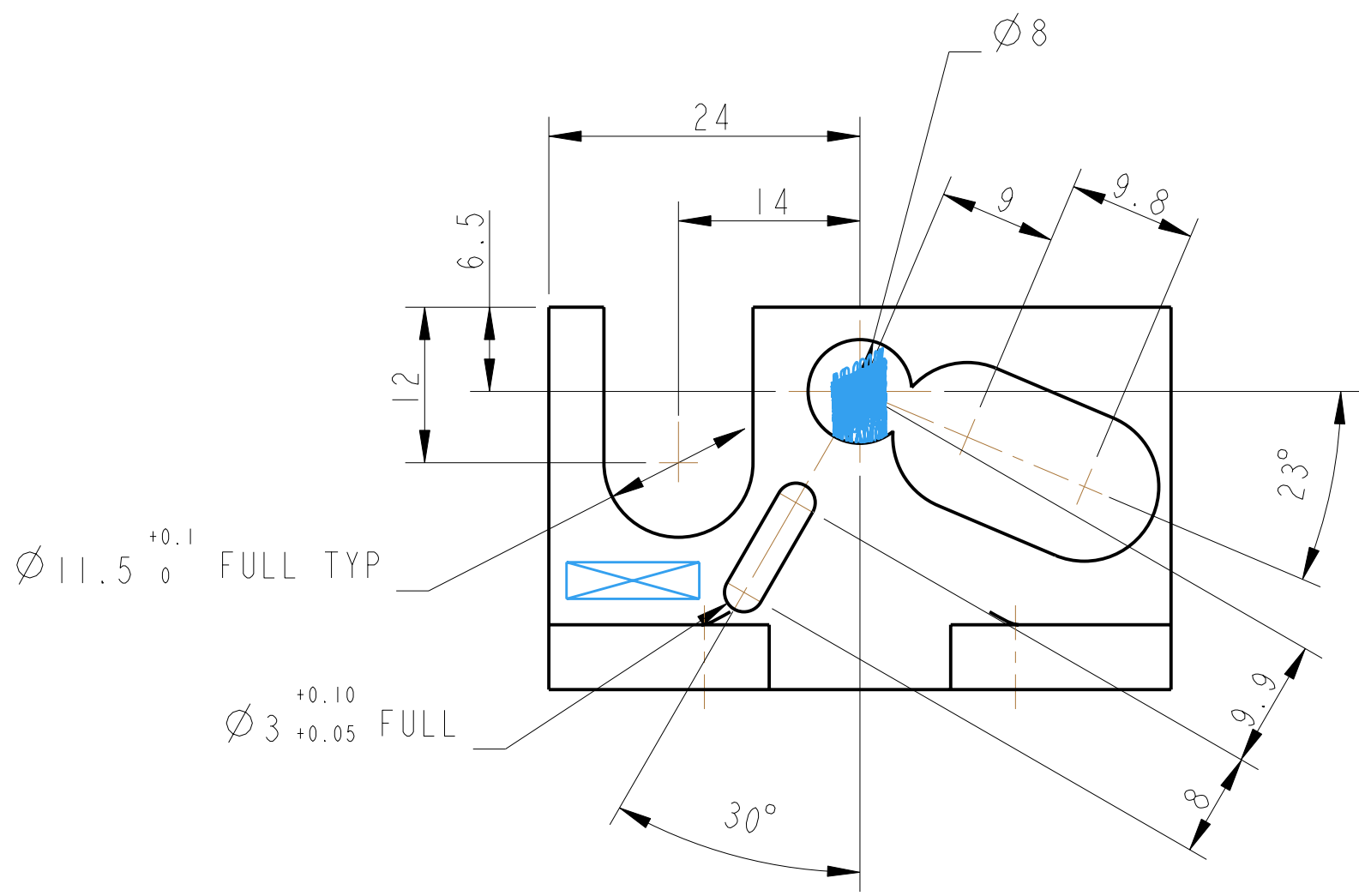
Ø6.6 THRO' 2 PLACES

Ø0.2



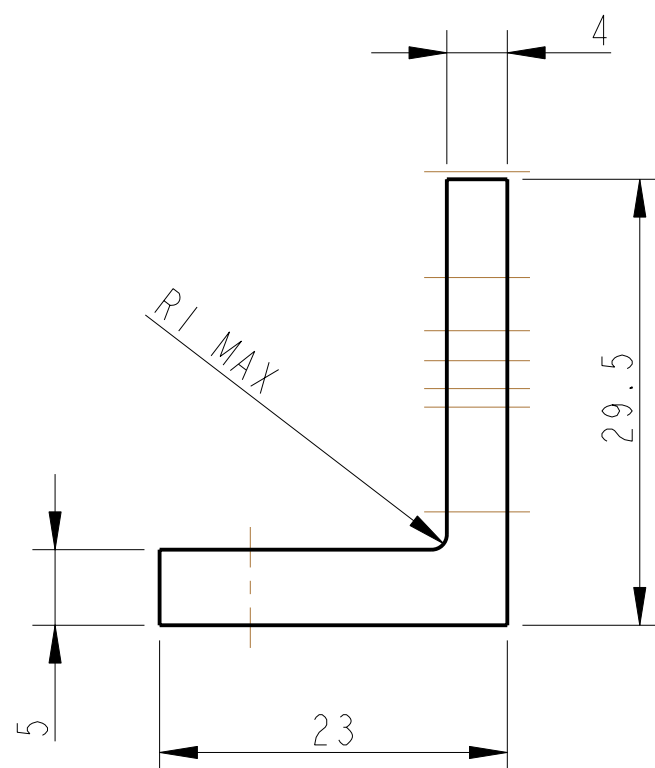
3-D VIEW

PART NO. (SEE NOTE 4) TO BE ETCHED OR STAMPED IN APPROX POSITION SHOWN.



Ø11.5<sup>+0.1</sup><sub>0</sub> FULL TYP

Ø3<sup>+0.10</sup><sub>+0.05</sub> FULL



NOTES: (UNLESS OTHERWISE SPECIFIED)		DIMENSIONS ARE IN mm (INCHES)		TOLERANCES:	
1.	REMOVE ALL SHARP EDGES, R.02 MIN.	X.XX	±0.2 mm (INCHES)	ANGULAR	±0.25°
2.	DO NOT SCALE FROM DRAWING.	MATERIAL:	AL ALLOY 5083 OR 6061	FINISH:	CLEAN & DE-GREASED Ra = 1.6
3.	ALL MACHINING FLUIDS SHALL BE WATER SOLUBLE AND FREE OF SULFUR, CHLORINE AND SILICONE, SUCH AS CINCINNATI MILACRON'S CIMTECH 410 (STAINLESS STEEL)	SCALE	2:1	PROJECTION	1ST ANGLE
4.	SCRIBE, ENGRAVE OR STAMP DRAWING PART NUMBER ON NOTED SURFACE OF PART AND A THREE DIGIT SERIAL NUMBER. SERIAL NUMBERS START AT 001 FOR THE FIRST PART AND PROCEED CONSECUTIVELY. USE .07" HIGH CHARACTERS. EXAMPLE: D020188-001. A VIBRATORY TOOL MAY BE USED.	DATE	15/MAR/10	REV	L
		DRAWN	J O'DELL	DRG. NO.	D060388
		CHECKED	MB	SCALE	2:1
		APPROVED	JOD	SHEET	1 OF 1

CALIFORNIA INSTITUTE OF TECHNOLOGY	
GLASGOW UNIVERSITY GEO 600 GROUP	
RUTHERFORD APPLETON LABORATORIES	
SYSTEM	aLIGO
SUB-SYSTEM	SUS
NEXT ASSY	QUAD UI MASS
PART NAME	BRACKET
UI MASS OSEM MOUNT	