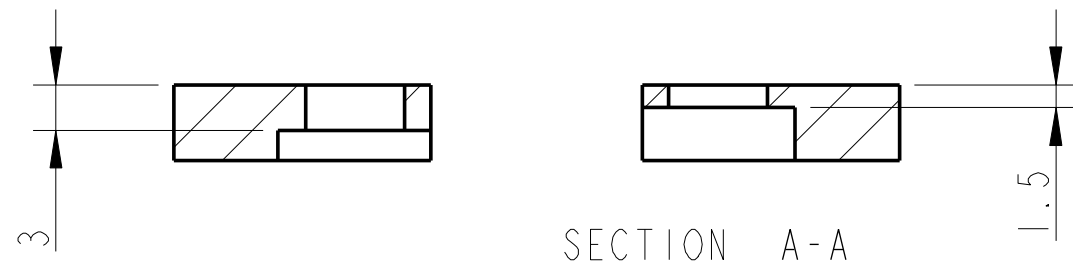
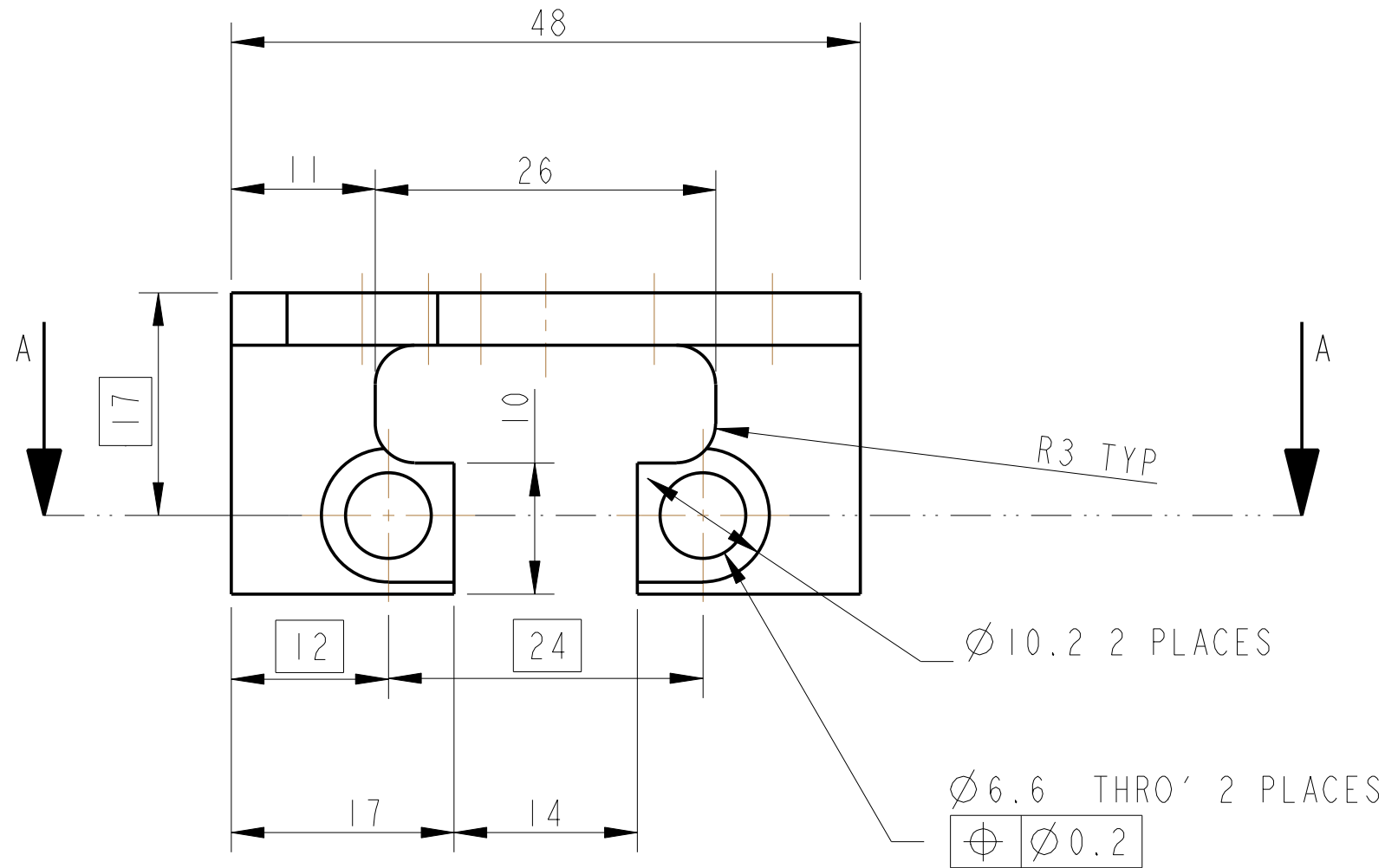


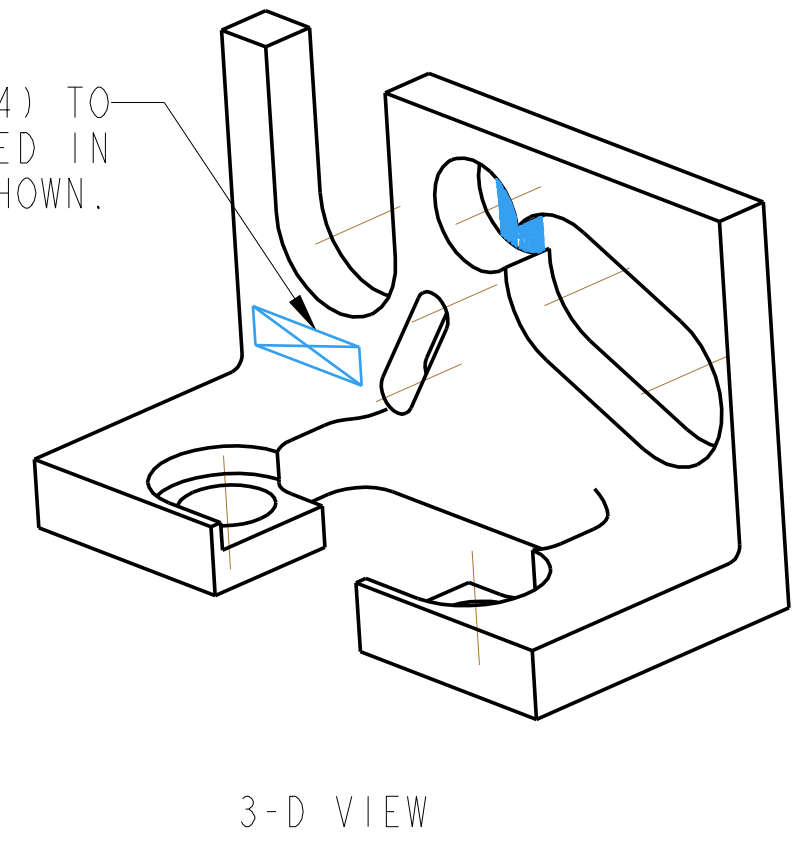
REV.	DATE	DCN #	DRAWING TREE #
A	18/OCT/06	E060247	
B	19/DEC/07	E060247-B	
K	21/JULY/08	E080371	



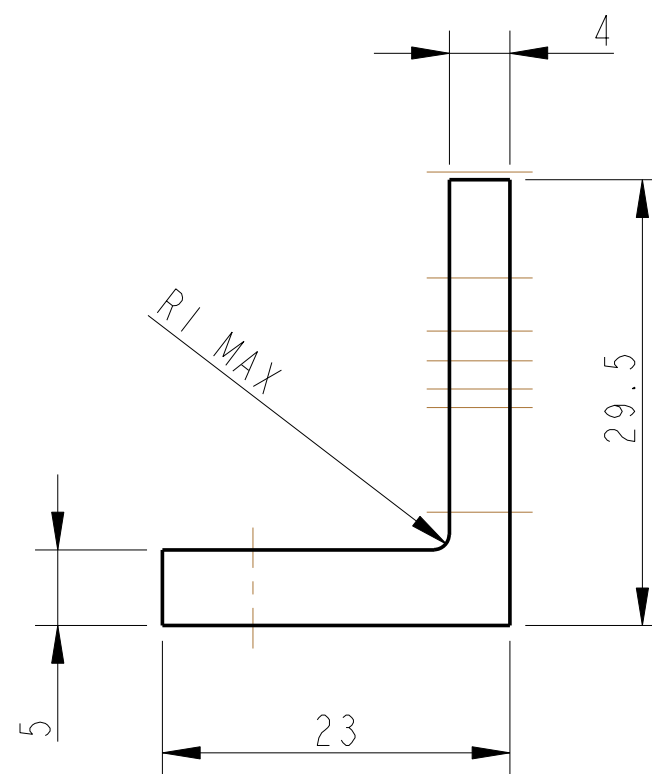
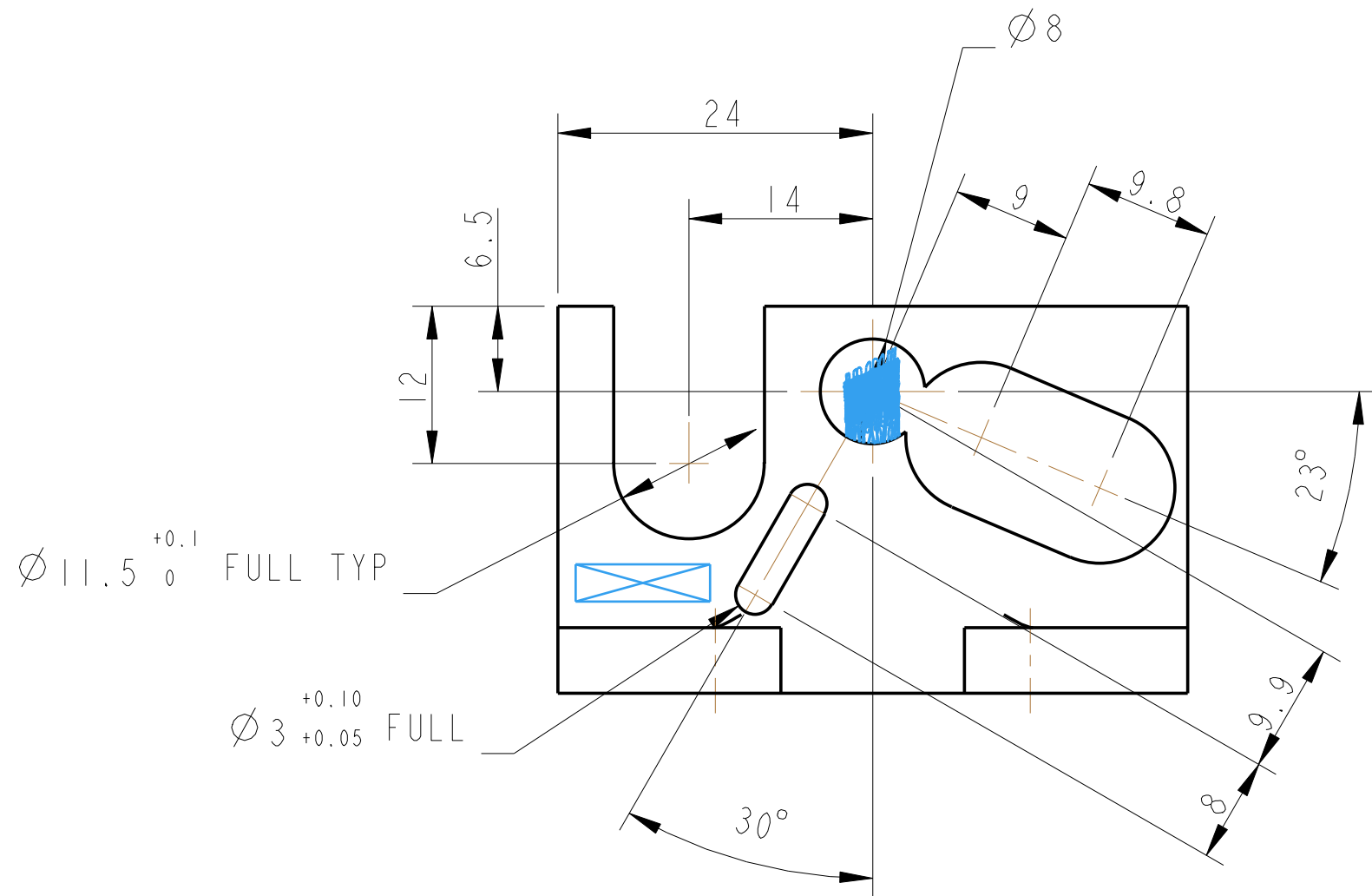
SECTION A-A



PART NO. (SEE NOTE 4) TO BE ETCHED OR STAMPED IN APPROX POSITION SHOWN.



3-D VIEW



NOTES: (UNLESS OTHERWISE SPECIFIED)				DIMENSIONS ARE IN mm [INCHES]		TOLERANCES:	
1.	REMOVE ALL SHARP EDGES.	R.02 MIN.		X.XX ±0.2 mm [INCHES]	ANGULAR ±0.25°		
2.	DO NOT SCALE FROM DRAWING.						
3.	ALL MACHINING FLUIDS SHALL BE WATER SOLUBLE AND FREE OF SULFUR, CHLORINE AND SILICONE, SUCH AS CINCINNATI MILACRON'S CIMTECH 410 (STAINLESS STEEL).						
4.	SCRIBE, ENGRAVE OR STAMP DRAWING PART NUMBER ON NOTED SURFACE OF PART AND A THREE DIGIT SERIAL NUMBER. SERIAL NUMBERS START AT 001 FOR THE FIRST PART AND PROCEED CONSECUTIVELY. USE .07" HIGH CHARACTERS. EXAMPLE: D020188-001. A VIBRATORY TOOL MAY BE USED.						
MATERIAL:		AL ALLOY 5083 OR 6061		FINISH: CLEAN & DE-GREASED		√μm [μin] Ro = 1.6	
DRAWN	J O'DELL	19/JUN/07		SIZE	DRG. NO.	REV	
CHECKED	AJB	10/JUNE/08		C	D060388	K.	
APPROVED	AJB	21/JULY/08		SCALE 2:1	PROJECTION	SHEET 1 OF 1	

CALIFORNIA INSTITUTE OF TECHNOLOGY		MASSACHUSETTS INSTITUTE OF TECHNOLOGY	
160 MASSACHUSETTS AVENUE		77 MASSACHUSETTS AVENUE	
CAMBRIDGE, MASSACHUSETTS 02139		CAMBRIDGE, MASSACHUSETTS 02139	
RUTHERFORD APPLETON LABORATORIES		RUTHERFORD APPLETON LABORATORIES	
SYSTEM		ADVANCED LIGO	
SUB-SYSTEM		SUS	
NEXT ASSY		QUAD N-PTYPE UI MASS	
PART NAME		BRACKET	
UI MASS OSEM MOUNT			