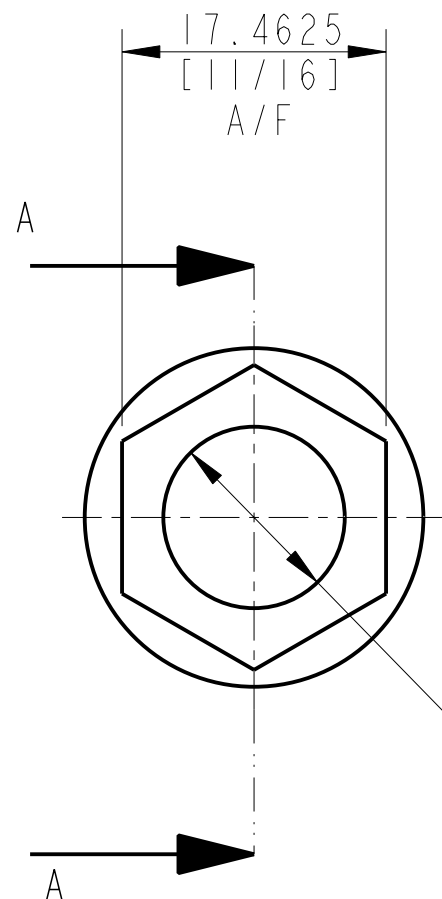
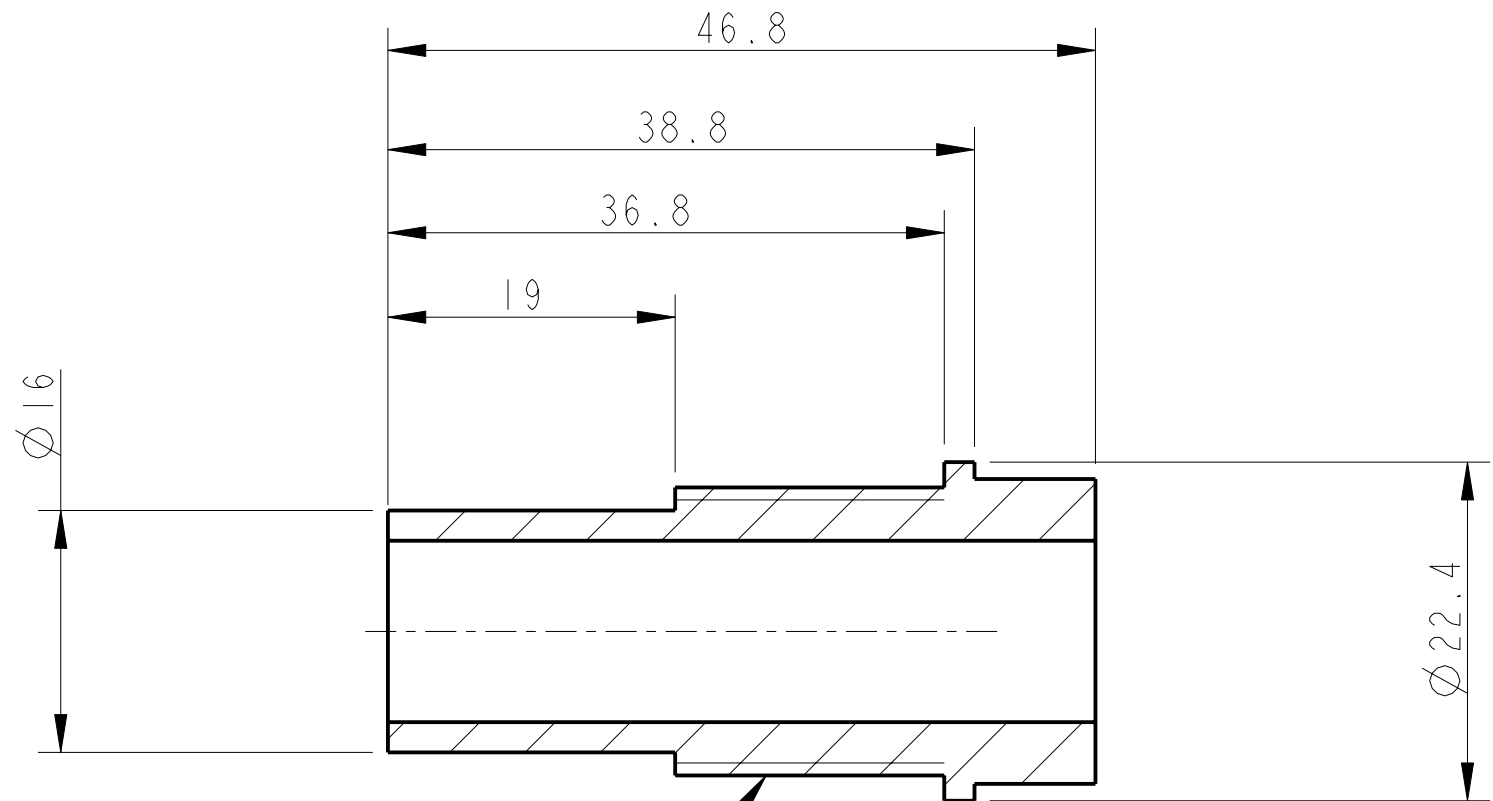


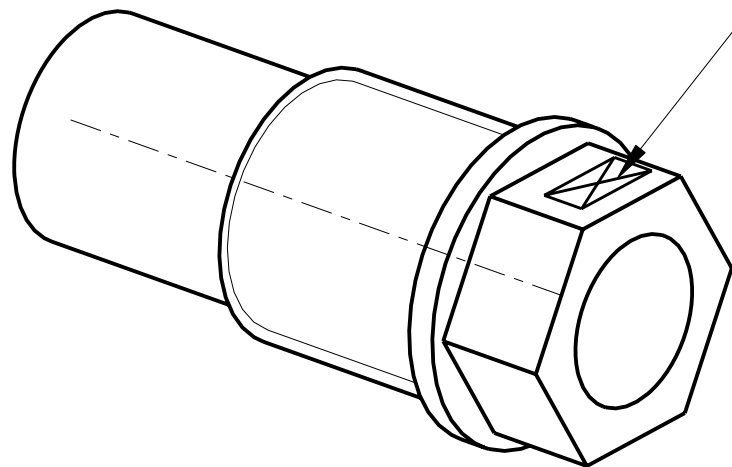
REV.	DATE	DCN #	DRAWING TREE #
A	18/OCT/06	E060247	
B	19/DEC/07	E060247-B	



3/4-10 UNC THREAD

SECTION A-A

PART NO. (SEE NOTE 4) TO BE ETCHED OR STAMPED IN APPROX POSITION SHOWN.



NOTES: (UNLESS OTHERWISE SPECIFIED)			CALIFORNIA INSTITUTE OF TECHNOLOGY MASSACHUSETTS INSTITUTE OF TECHNOLOGY 1GR, GLASGOW UNIVERSITY GEO 600 GROUP RUTHERFORD APPLETON LABORATORIES	
1. REMOVE ALL SHARP EDGES, R.02 MIN. 2. DO NOT SCALE FROM DRAWING. 3. ALL MACHINING FLUIDS SHALL BE WATER SOLUBLE AND FREE OF SULFUR, CHLORINE AND SILICONE, SUCH AS CINCINNATI MILACRON'S CIMTECH 410 (STAINLESS STEEL) 4. SCRIBE, ENGRAVE OR STAMP DRAWING PART NUMBER ON NOTED SURFACE OF PART AND A THREE DIGIT SERIAL NUMBER. SERIAL NUMBERS START AT 001 FOR THE FIRST PART AND PROCEED CONSECUTIVELY. USE .07" HIGH CHARACTERS. EXAMPLE: D020188- 001. A VIBRATORY TOOL MAY BE USED.	DIMENSIONS ARE IN mm [INCHES]		SYSTEM ADVANCED LIGO	
	TOLERANCES: X.XX ±0.2 mm ANGULAR ±0.25 °		SUB-SYSTEM SUS	
	MATERIAL: OFHC COPPER		NEXT ASSY UI MASS QUAD N-PTYPE	
	FINISH: CLEAN & DE-GREASED √μm [μin] Ra = 1.6		PART NAME UI MASS BLADE ECD	
	NAME	DATE	SIZE	REV
	DRAWN FEL	15/SEP/06	B	G.
	CHECKED J'OD	27/SEP/06	DRG. NO. D060381	
	APPROVED IW	29/SEP/06	SCALE 2:1 PROJECTION: SHEET 1 OF 1	