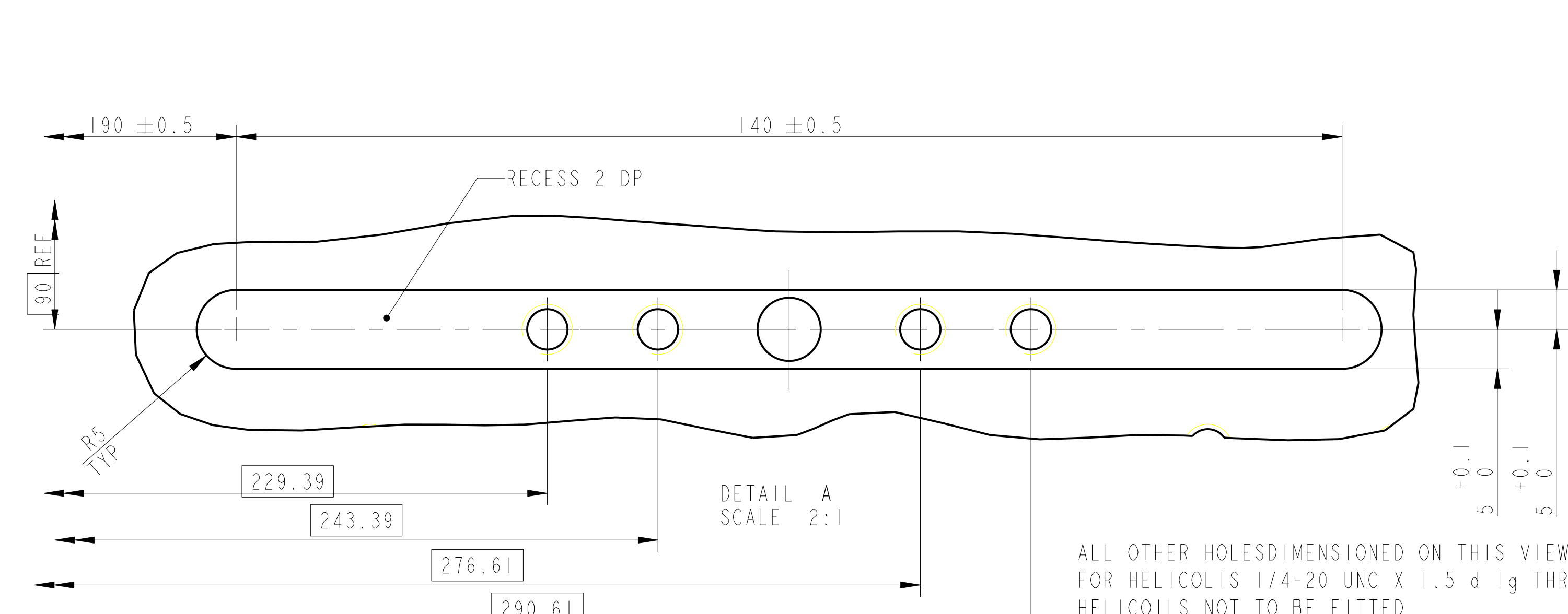
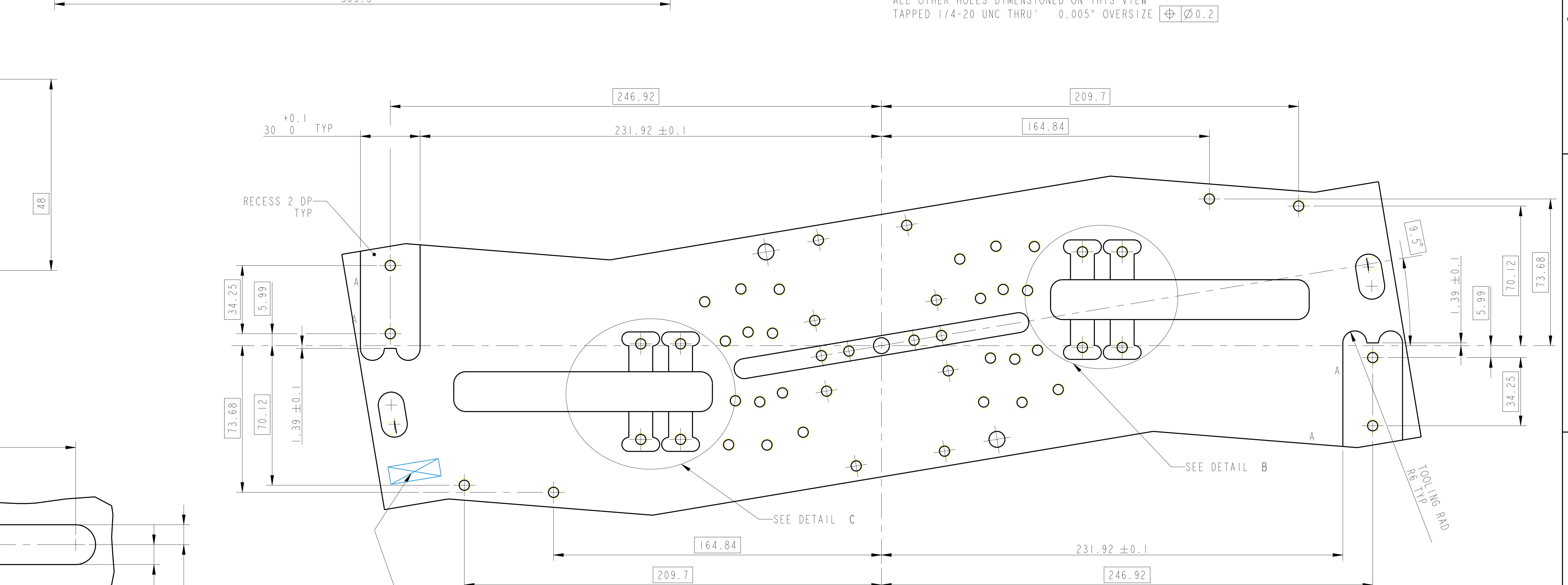
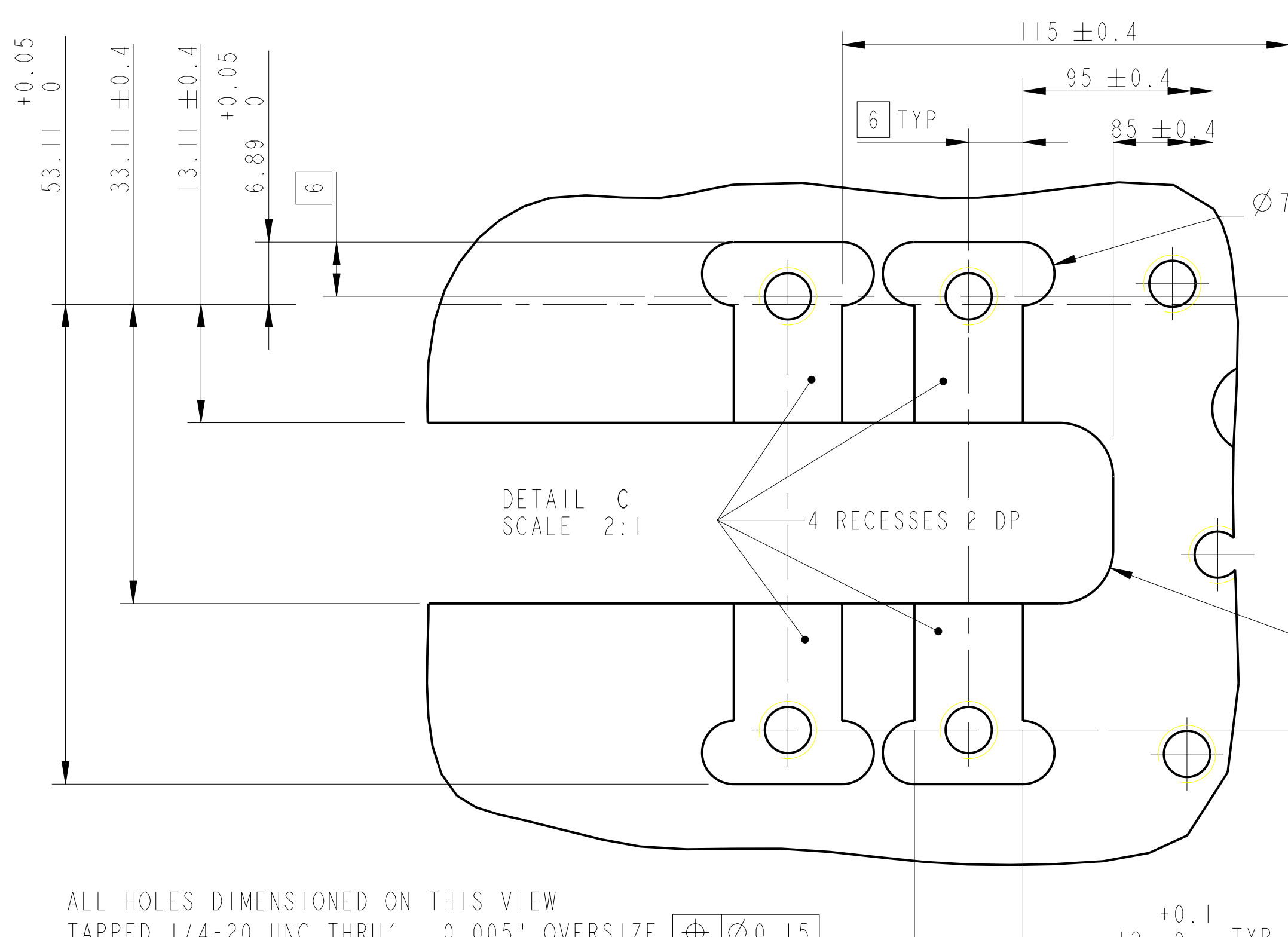
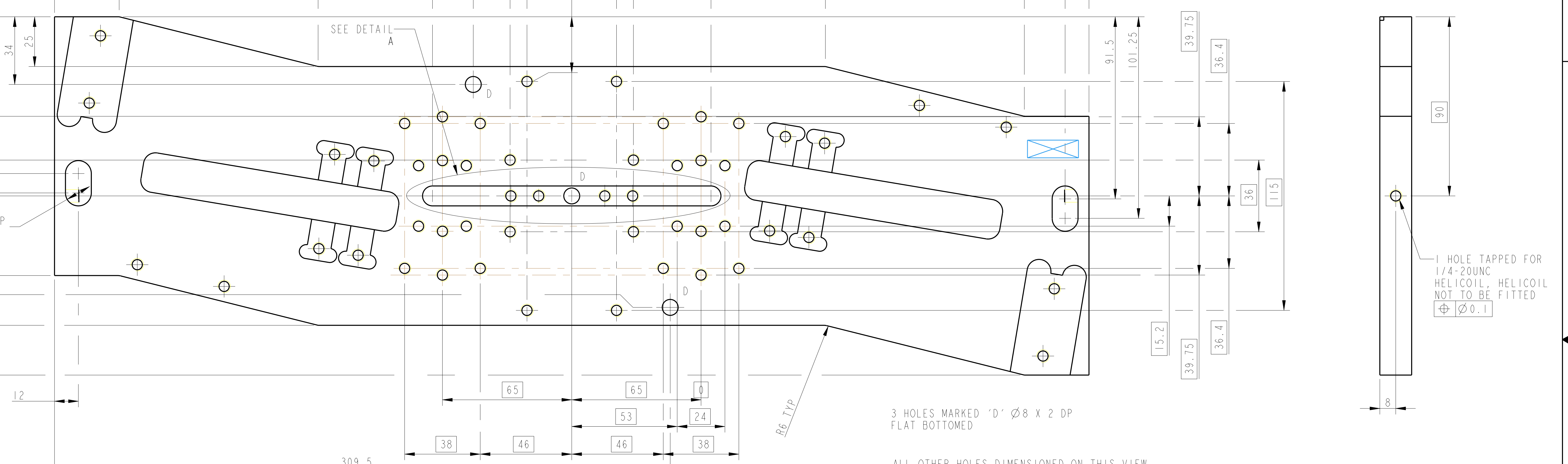
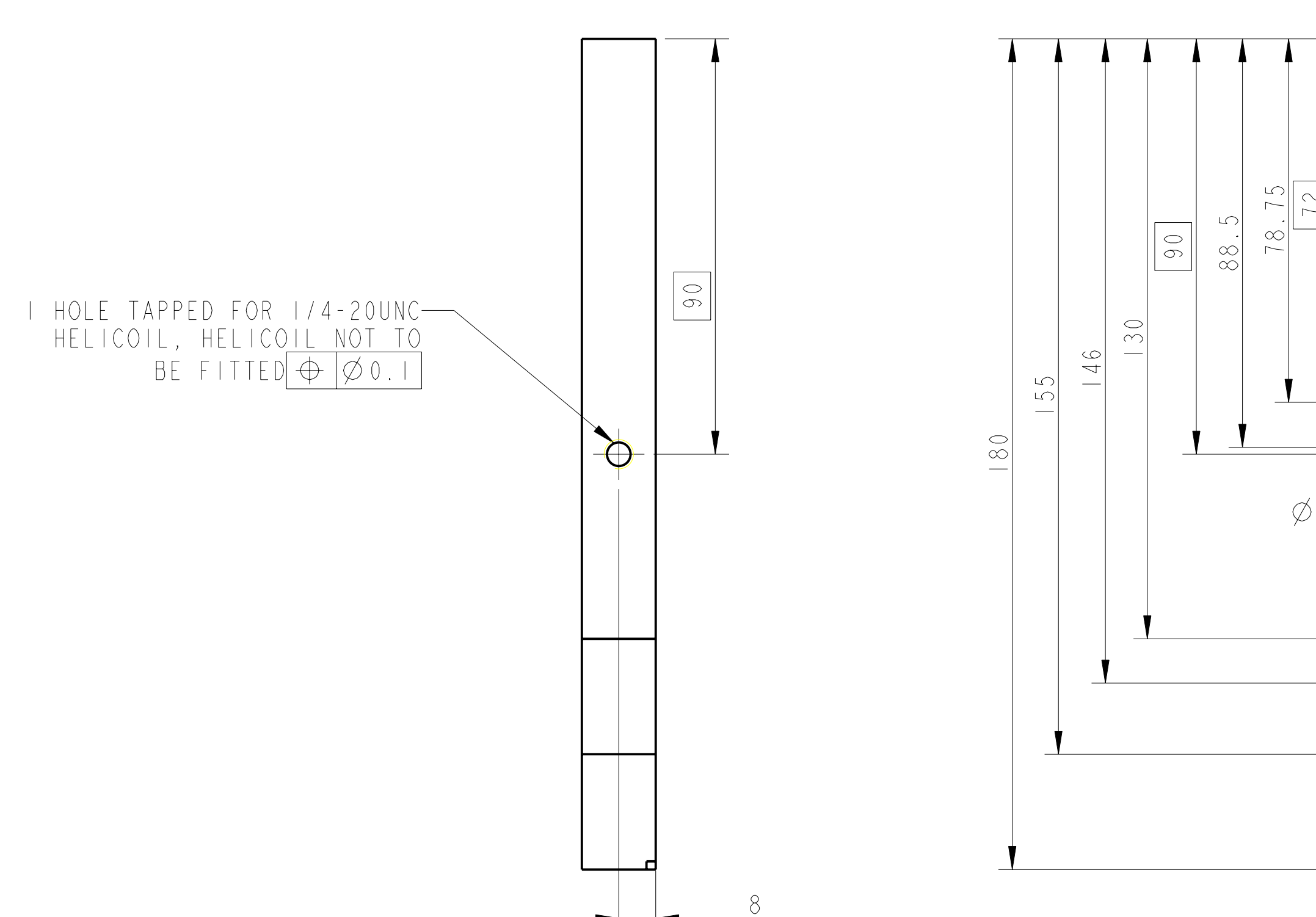
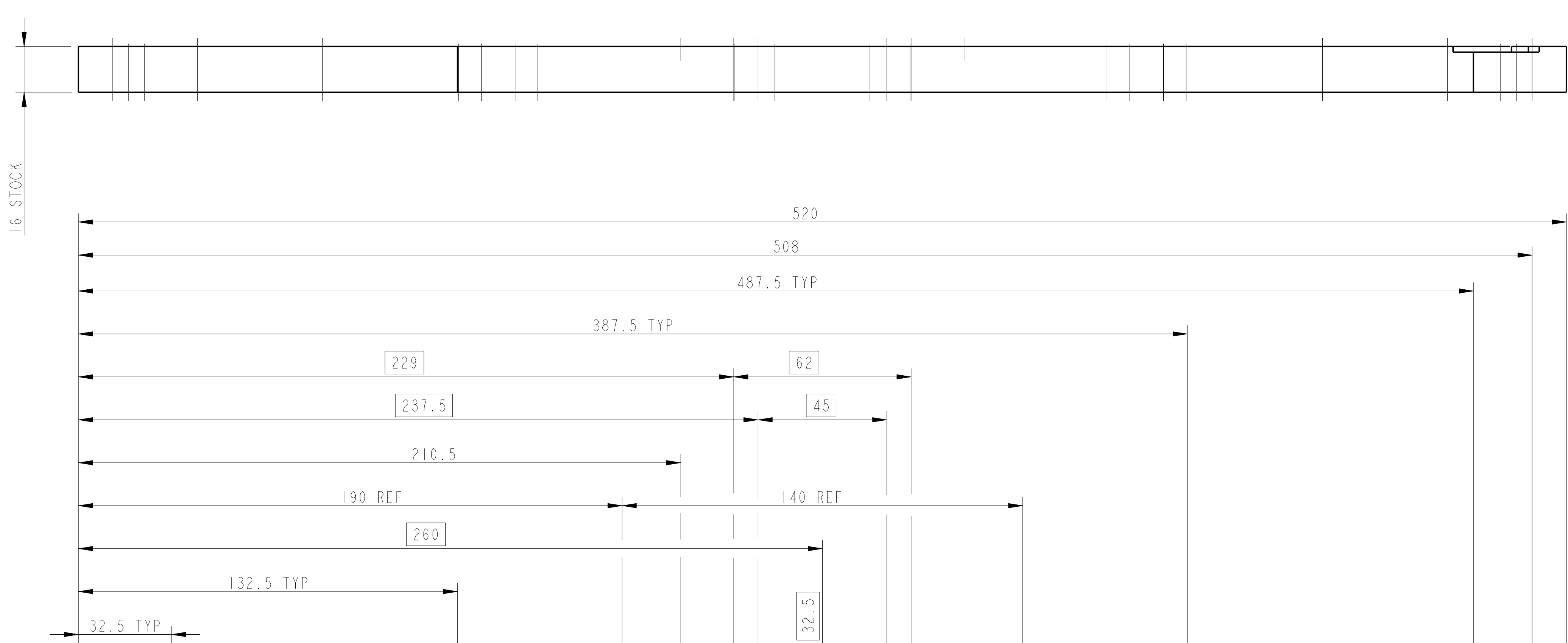
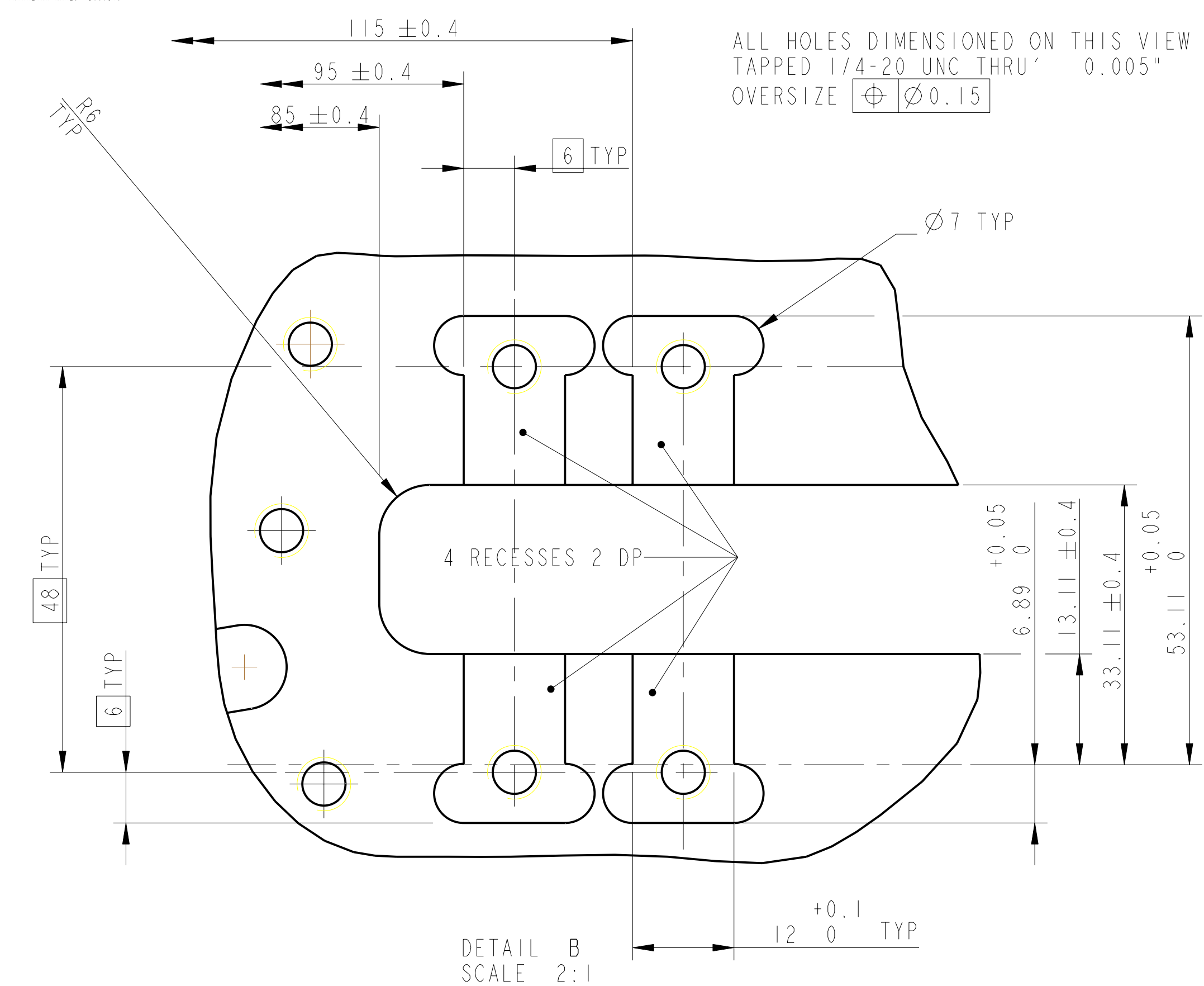


REV.	DATE	BY	CHK	DRAWING TITLE
A	10/20/04	ERROSTI		
B	10/20/04	ERROSTI		
C	10/20/04	ERROSTI		



NOTE: UNLESS OTHERWISE SPECIFIED:

1. REMOVE ALL SHARP EDGES.	DRAWINGS ARE IN mm (INCHES)	25/77 CALIFORNIA INSTITUTE OF TECHNOLOGY
2. DO NOT SCALE FROM DRAWING.	UNLESS OTHERWISE SPECIFIED, DIMENSIONS ARE IN mm (INCHES)	UNLESS OTHERWISE SPECIFIED, DIMENSIONS ARE IN mm (INCHES)
3. ALL DIMENSIONS ARE TO UNLESS OTHERWISE SPECIFIED.	ALL DIMENSIONS ARE TO UNLESS OTHERWISE SPECIFIED.	UNLESS OTHERWISE SPECIFIED, DIMENSIONS ARE IN mm (INCHES)
4. SURFACE FINISH: UNLESS OTHERWISE SPECIFIED, ALL SURFACES SHALL BE MATTE POLISHED TO A FINISH OF 0.8 μm (32 μin) RMS.	UNLESS OTHERWISE SPECIFIED, ALL SURFACES SHALL BE MATTE POLISHED TO A FINISH OF 0.8 μm (32 μin) RMS.	UNLESS OTHERWISE SPECIFIED, ALL SURFACES SHALL BE MATTE POLISHED TO A FINISH OF 0.8 μm (32 μin) RMS.
5. SURFACE FINISH: UNLESS OTHERWISE SPECIFIED, ALL SURFACES SHALL BE MATTE POLISHED TO A FINISH OF 0.8 μm (32 μin) RMS.	UNLESS OTHERWISE SPECIFIED, ALL SURFACES SHALL BE MATTE POLISHED TO A FINISH OF 0.8 μm (32 μin) RMS.	UNLESS OTHERWISE SPECIFIED, ALL SURFACES SHALL BE MATTE POLISHED TO A FINISH OF 0.8 μm (32 μin) RMS.
6. SURFACE FINISH: UNLESS OTHERWISE SPECIFIED, ALL SURFACES SHALL BE MATTE POLISHED TO A FINISH OF 0.8 μm (32 μin) RMS.	UNLESS OTHERWISE SPECIFIED, ALL SURFACES SHALL BE MATTE POLISHED TO A FINISH OF 0.8 μm (32 μin) RMS.	UNLESS OTHERWISE SPECIFIED, ALL SURFACES SHALL BE MATTE POLISHED TO A FINISH OF 0.8 μm (32 μin) RMS.

ALL HOLES MARKED A DIMENSIONED ON THIS VIEW TAPPED FOR HELICOILS 1/4-20 UNC THRU Ø 0.15 HELICOILS NOT TO BE FITTED.

ALL OTHER DIMENSIONED HOLES ON THIS VIEW TAPPED 1.4-20 UNC THRU X 0.005" OVERSIZE Ø 0.15

PART NO. (SEE NOTE 4) TO BE ETCHED OR STAMPED IN APPROX POSITION SHOWN.

NOTES: UNLESS OTHERWISE SPECIFIED: 1. REMOVE ALL SHARP EDGES. 2. DO NOT SCALE FROM DRAWING. 3. ALL DIMENSIONS ARE TO UNLESS OTHERWISE SPECIFIED. 4. SURFACE FINISH: UNLESS OTHERWISE SPECIFIED, ALL SURFACES SHALL BE MATTE POLISHED TO A FINISH OF 0.8 μm (32 μin) RMS. 5. SURFACE FINISH: UNLESS OTHERWISE SPECIFIED, ALL SURFACES SHALL BE MATTE POLISHED TO A FINISH OF 0.8 μm (32 μin) RMS. 6. SURFACE FINISH: UNLESS OTHERWISE SPECIFIED, ALL SURFACES SHALL BE MATTE POLISHED TO A FINISH OF 0.8 μm (32 μin) RMS.

DATE: 10/20/04
 DRAWN BY: ERROSTI
 CHECKED BY: ERROSTI
 APPROVED BY: ERROSTI
 PART NAME: MASS BASE PLATE
 SYSTEM: ALISO
 SUB-SYSTEM: BUS
 PART ASSY: QUAD UI MASS
 DRAWING NO: 060378
 SHEET 1 OF 1