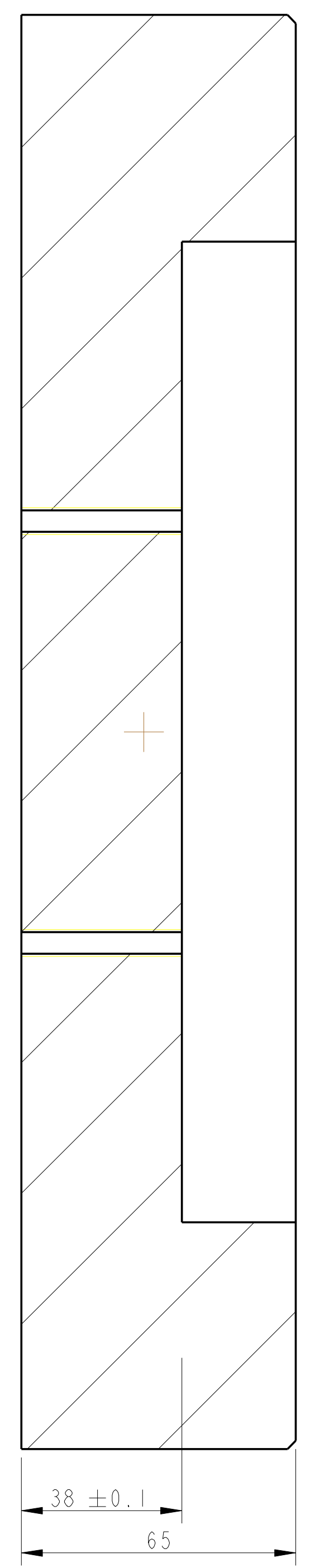
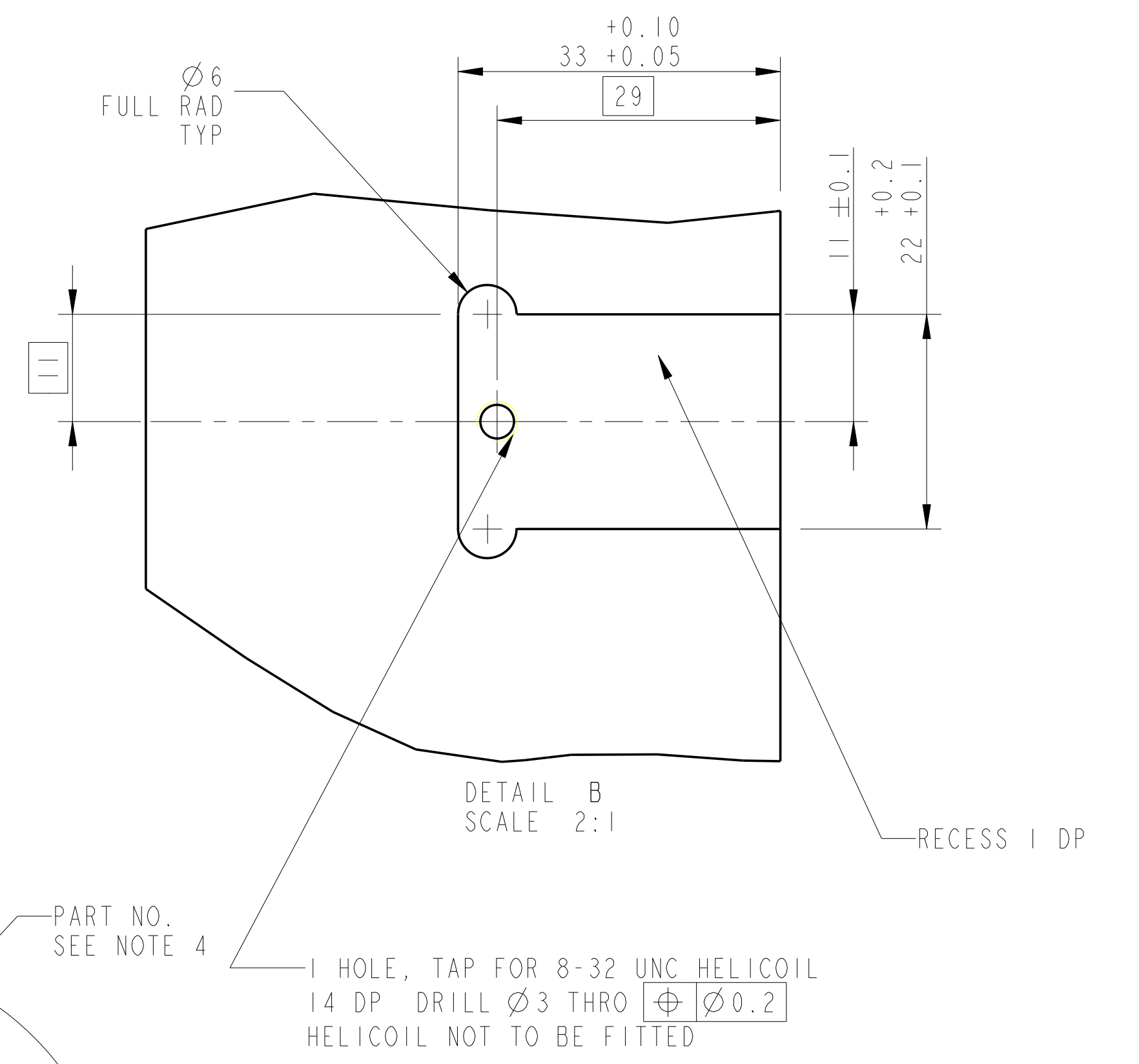
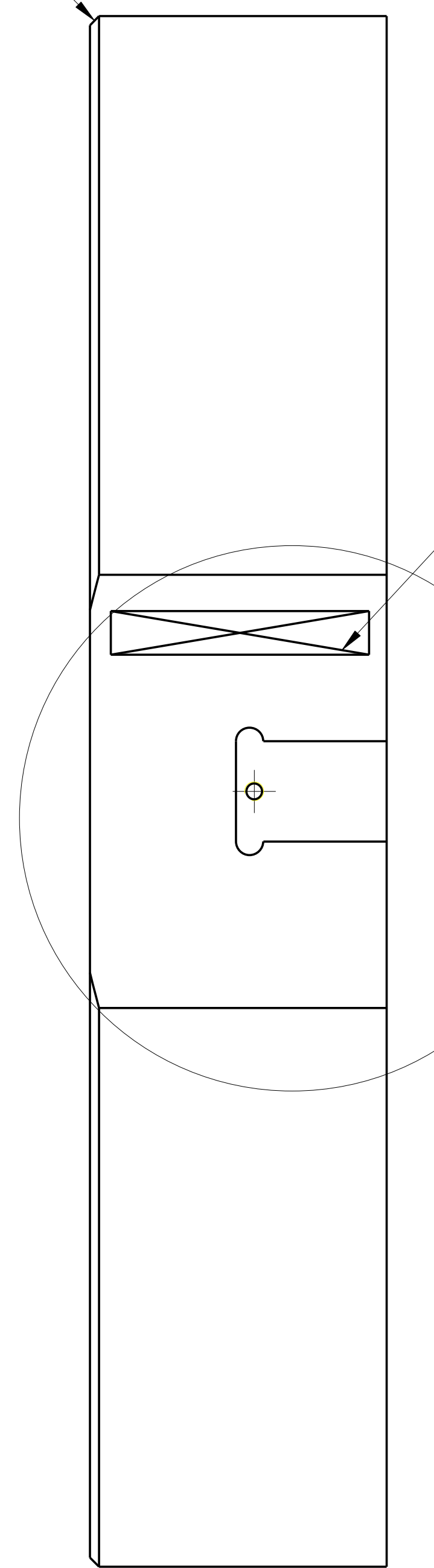
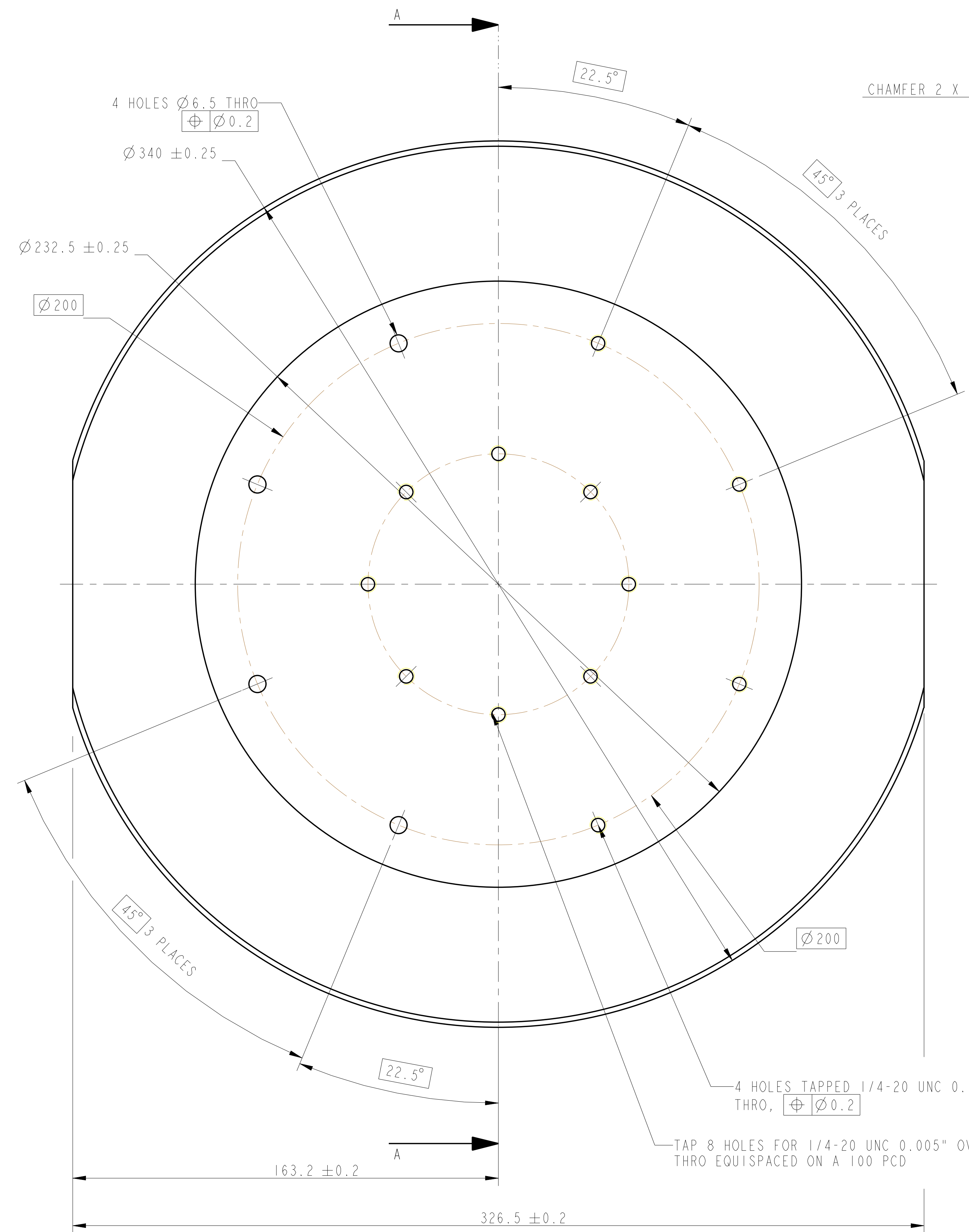


REV.	DATE	DCN #	DRAWING TREE #
A	15/OCT/06	E060240	
B	20/DEC/07	E060240-B	
F	21/JULY/08	E080370	



SECTION A-A



NOTES: (UNLESS OTHERWISE SPECIFIED)

- REMOVE ALL SHARP EDGES.
- DO NOT SCALE FROM DRAWING.
- ALL MACHINING FLUIDS SHALL BE WATER SOLUBLE AND FREE OF SULFUR, CHLORINE AND SILICONE. SUCH AS CINCINNATI WILCOX'S CIMTECH 410 (STAINLESS STEEL).
- SCRIBE, ENGRAVE OR STAMP DRAWING PART NUMBER ON NOTED SURFACE OF PART AND A THREE DIGIT SERIAL NUMBER. SERIAL NUMBERS START AT 001 FOR THE FIRST PART AND PROCEED CONSECUTIVELY. USE 07* HIGH CHARACTERS. EXAMPLE: 000000-001. A VIBRATORY TOOL MAY BE USED.

DIMENSIONS ARE IN mm (INCHES)

FINISH: CLEAN AND DECREASED Ra = 1.6

MATERIAL: AL ALLOY 5083

SYSTEM: ADVANCED LIGO

SUB-SYSTEM: SUS

NEXT ASSY: ASSEMBLY MASSES QUAD NPTYPE

PART NAME: HALF MASS (DUMMY HALF REACTION MASS)

DRG. NO.: D060357

SCALE: 1:1 PROJECTION: FIRST ANGLE SHEET 1 OF 1