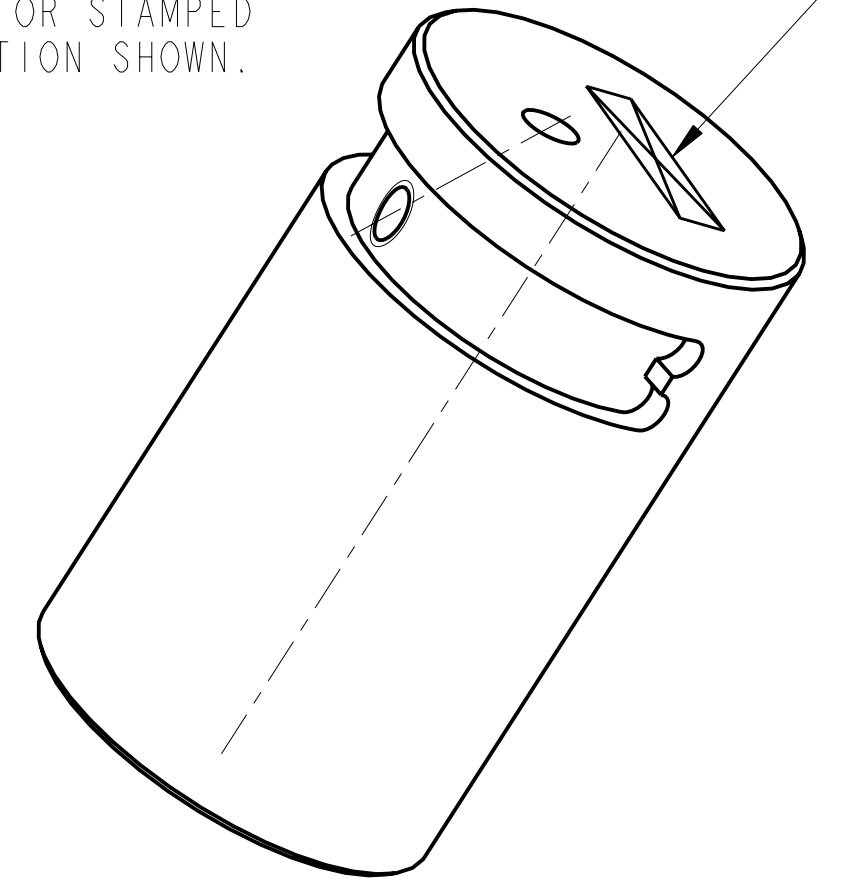
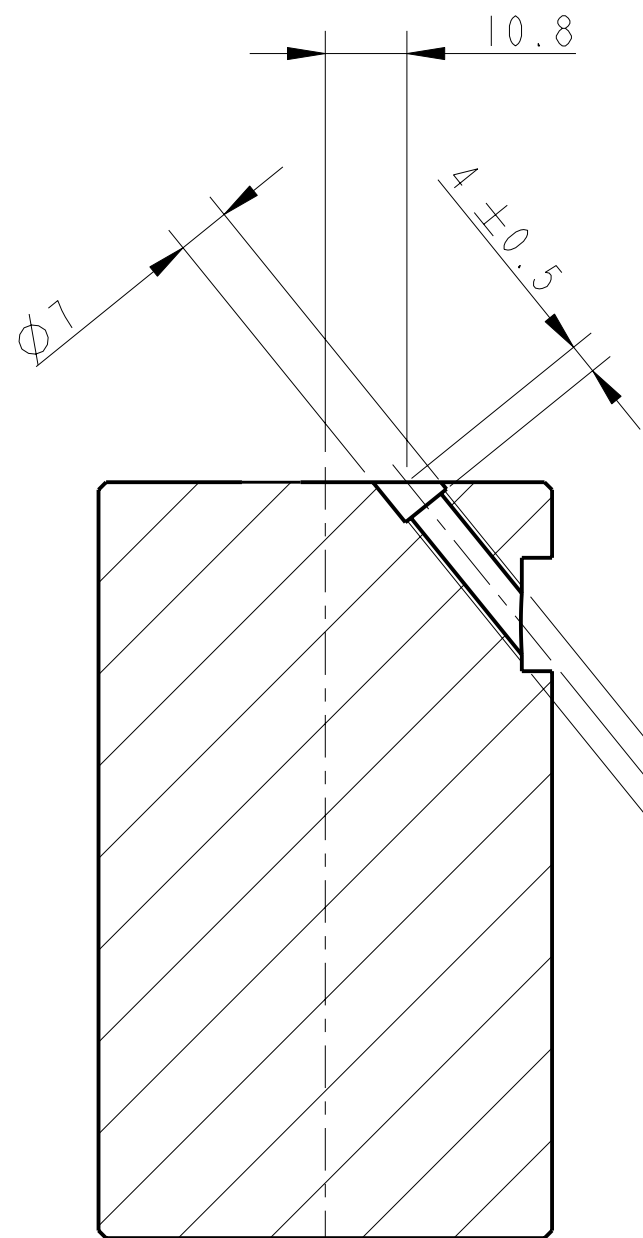
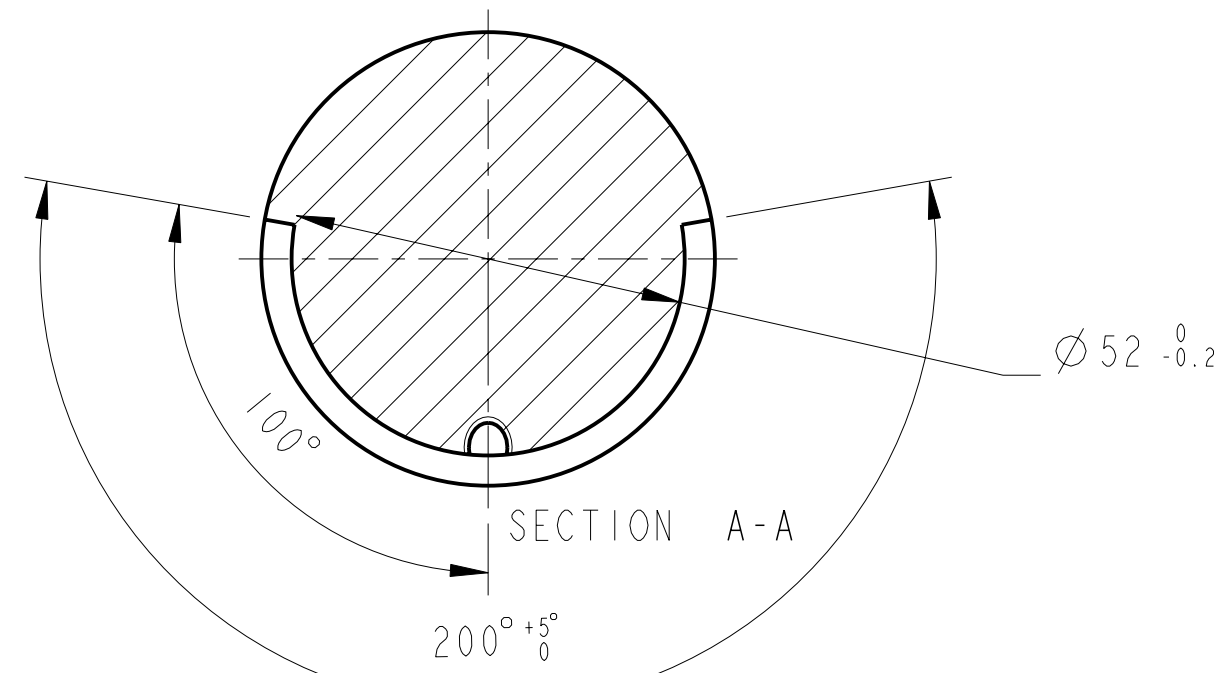


REV.	DATE	DCN #	DRAWING TREE #
A	15/OCT/06	E060240	

PART NO. (SEE NOTE 4)
TO BE ETCHED OR STAMPED
IN APPROX POSITION SHOWN.



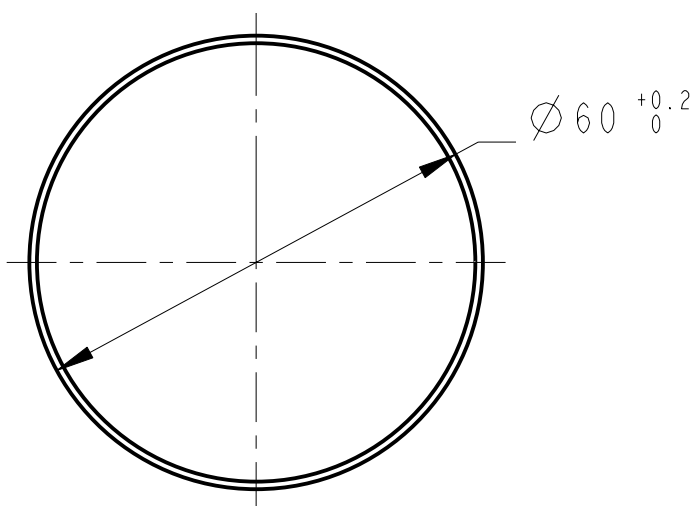
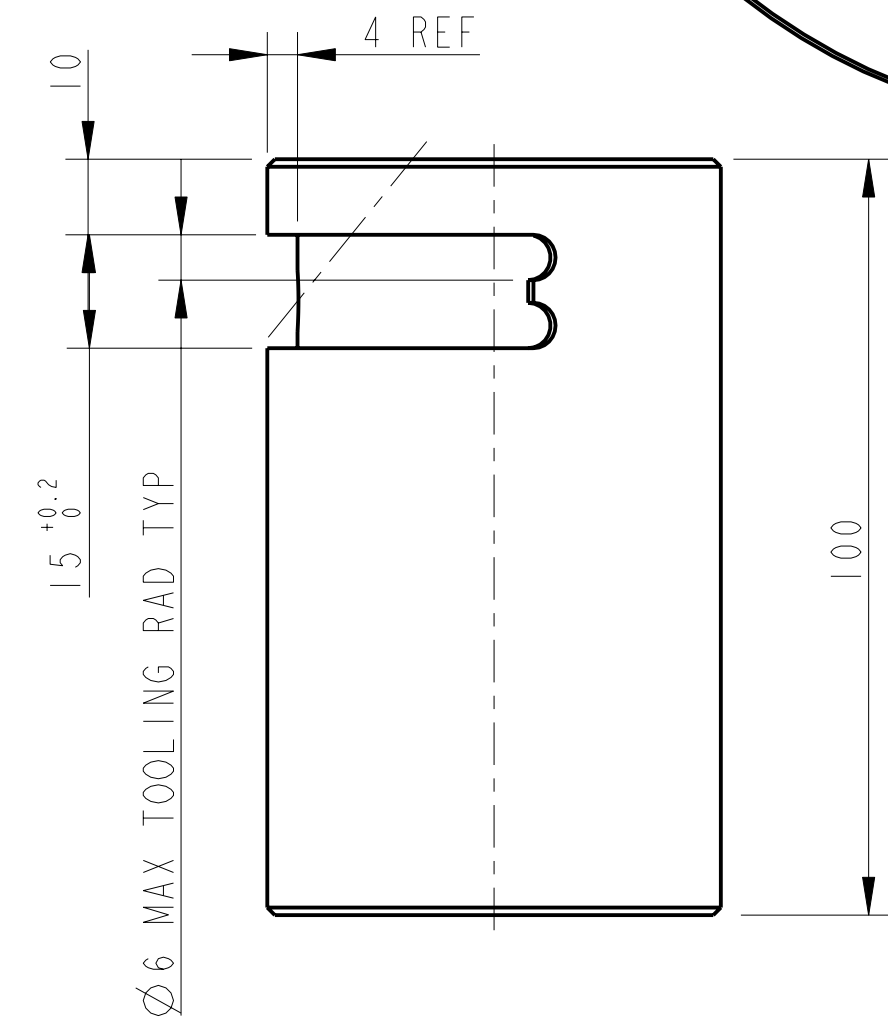
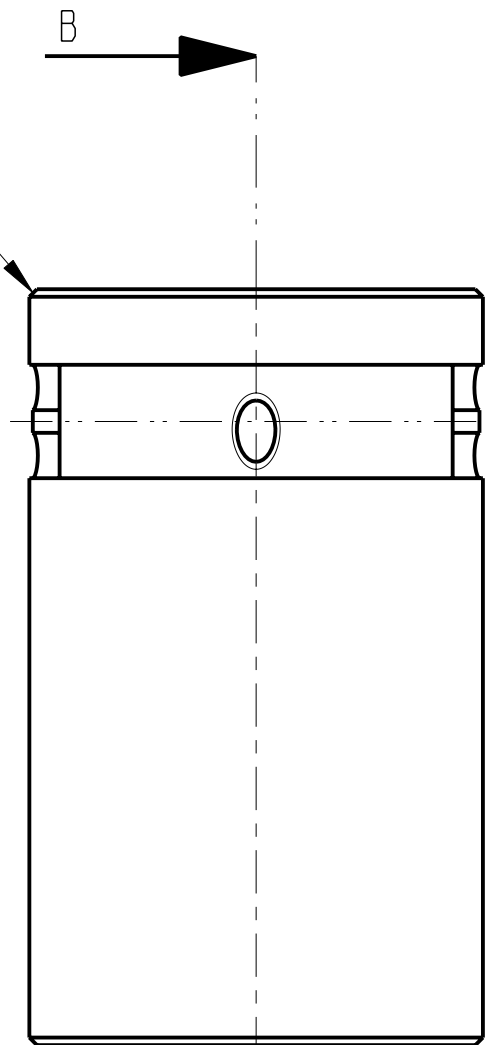
3D VIEW



SECTION B-B

1 X 45°
2 PLACES

1 HOLE FOR
FOR 1/4-20 UNC X 1.5D
1g HELICOIL. HELICOILS
NOT TO BE FITTED



NOTES: (UNLESS OTHERWISE SPECIFIED)

- REMOVE ALL SHARP EDGES, R.02 MIN.
- DO NOT SCALE FROM DRAWING.
- ALL MACHINING FLUIDS SHALL BE WATER SOLUBLE AND FREE OF SULFUR, CHLORINE AND SILICONE, SUCH AS CINCINNATI MILACRON'S CIMTECH 410 (STAINLESS STEEL).
- SCRIBE, ENGRAVE OR STAMP DRAWING PART NUMBER ON NOTED SURFACE OF PART AND A THREE DIGIT SERIAL NUMBER. SERIAL NUMBERS START AT 001 FOR THE FIRST PART AND PROCEED CONSECUTIVELY. USE .07" HIGH CHARACTERS. EXAMPLE: D020188-001. A VIBRATORY TOOL MAY BE USED.

DIMENSIONS ARE IN mm (INCHES)		TOLERANCES:	
X.XX ± 0.2		ANGULAR ± 0.25°	
MATERIAL: ST. STEEL		303, 304, 316	
FINISH: CLEAN, GREASE FREE		Ra = 1.6	
DRAWN	J O'DELL	DATE	18/SEP/06
CHECKED	IW	DATE	27/SEP/06
APPROVED	IW	DATE	27/SEP/06

CALIFORNIA INSTITUTE OF TECHNOLOGY GLASGOW UNIVERSITY GEO 600 GROUP RUTHERFORD APPLETON LABORATORIES	
SYSTEM	ADVANCED LIGO
SUB-SYSTEM	SUS
NEXT ASSY	PENRE ETM QUAD N-PTYPE
PART NAME	PEN RE PITCH MASS
(PITCH MASS)	
DRG. NO.	D060353
SCALE	1:1
PROJECTION	1st Angle
SHEET	1 OF 1