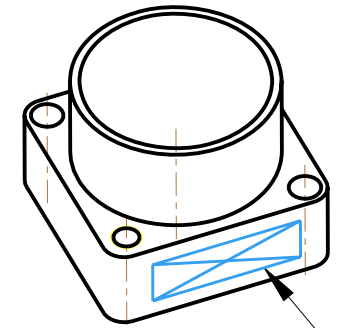
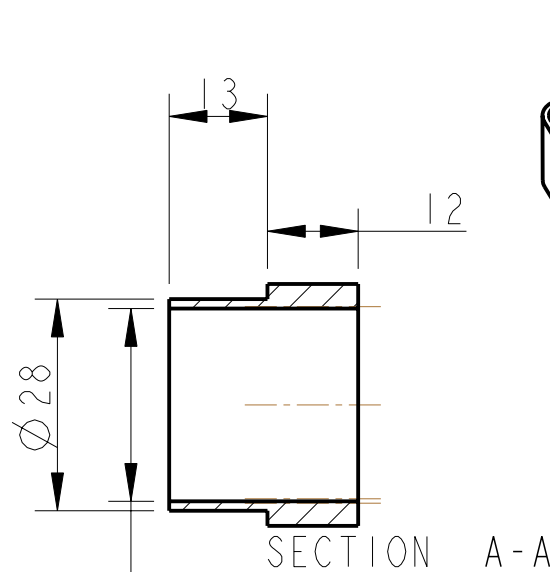
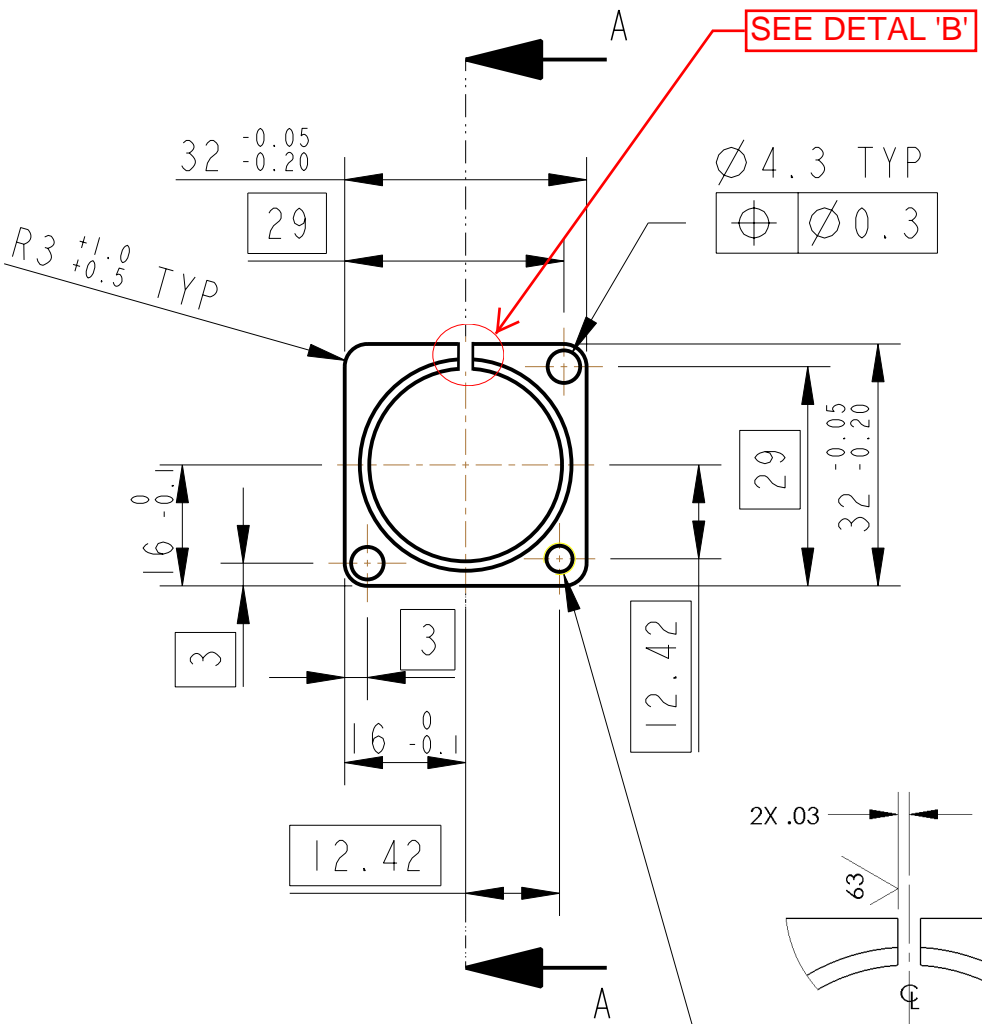


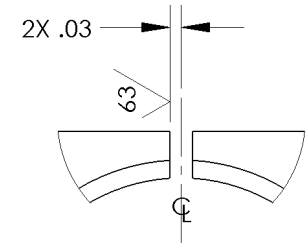
| | | | |
|------|-----------|-----------|----------------|
| REV. | DATE | DCN # | DRAWING TREE # |
| A | 15/OCT/06 | E060240 | |
| B | 20/DEC/07 | E060240-B | |

v3 12 NOV 2012 E1201008-x0



3D VIEW

SECTION A-A

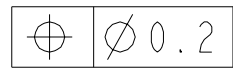


DETAIL B
(DIMS ARE IN INCHES)

REIDENTIFY PER NOTE NO. 4

TO BE ETCHED OR STAMPED
IN APPROX POSITION SHOWN.

HOLE THRO' FOR 8-32
UNC HELICOIL
HELICOIL NOT TO BE FITTED



NOTES: (UNLESS OTHERWISE SPECIFIED)

1. REMOVE ALL SHARP EDGES, R.02 MIN.
2. DO NOT SCALE FROM DRAWING.
3. ALL MACHINING FLUIDS SHALL BE WATER SOLUBLE AND FREE OF SULFUR, CHLORINE AND SILICONE, SUCH AS CINCINNATI MILACRON'S CIMTECH 410 (STAINLESS STEEL)
4. SCRIBE, ENGRAVE OR STAMP DRAWING PARTNUMBER ON NOTED SURFACE OF PART AND A THREE DIGIT SERIAL NUMBER. SERIAL NUMBERS START AT 001 FOR THE FIRST PART AND PROCEED CONSECUTIVELY. USE .07" HIGH CHARACTERS. EXAMPLE: D020188- 001. A VIBRATORY TOOL MAY BE USED.

DIMENSIONS ARE IN MM [INCHES]
TOLERANCES:
X.XX ±0.2 mm
ANGULAR ±0.25 °

| | | |
|-------------------------|-----------|--|
| MATERIAL: AL ALLOY 5083 | | |
| FINISH: CLEAN Ra = 1.6 | | |
| NAME | DATE | |
| DRAWN J O'DELL | 18/SEP/06 | |
| CHECKED MB | 15/MAR/10 | |
| APPROVED JOD | 15/MAR/10 | |

CALIFORNIA INSTITUTE OF TECHNOLOGY
MASSACHUSETTS INSTITUTE OF TECHNOLOGY
IGR, GLASGOW UNIVERSITY GEO 600 GROUP
RUTHERFORD APPLETON LABORATORIES

| | |
|------------|---------------------------------|
| SYSTEM | aLIGO |
| SUB-SYSTEM | SUS |
| NEXT ASSY | PENRE QUAD |
| PART NAME | BASE PLATE LIGO 1 OSEM MOUNT |