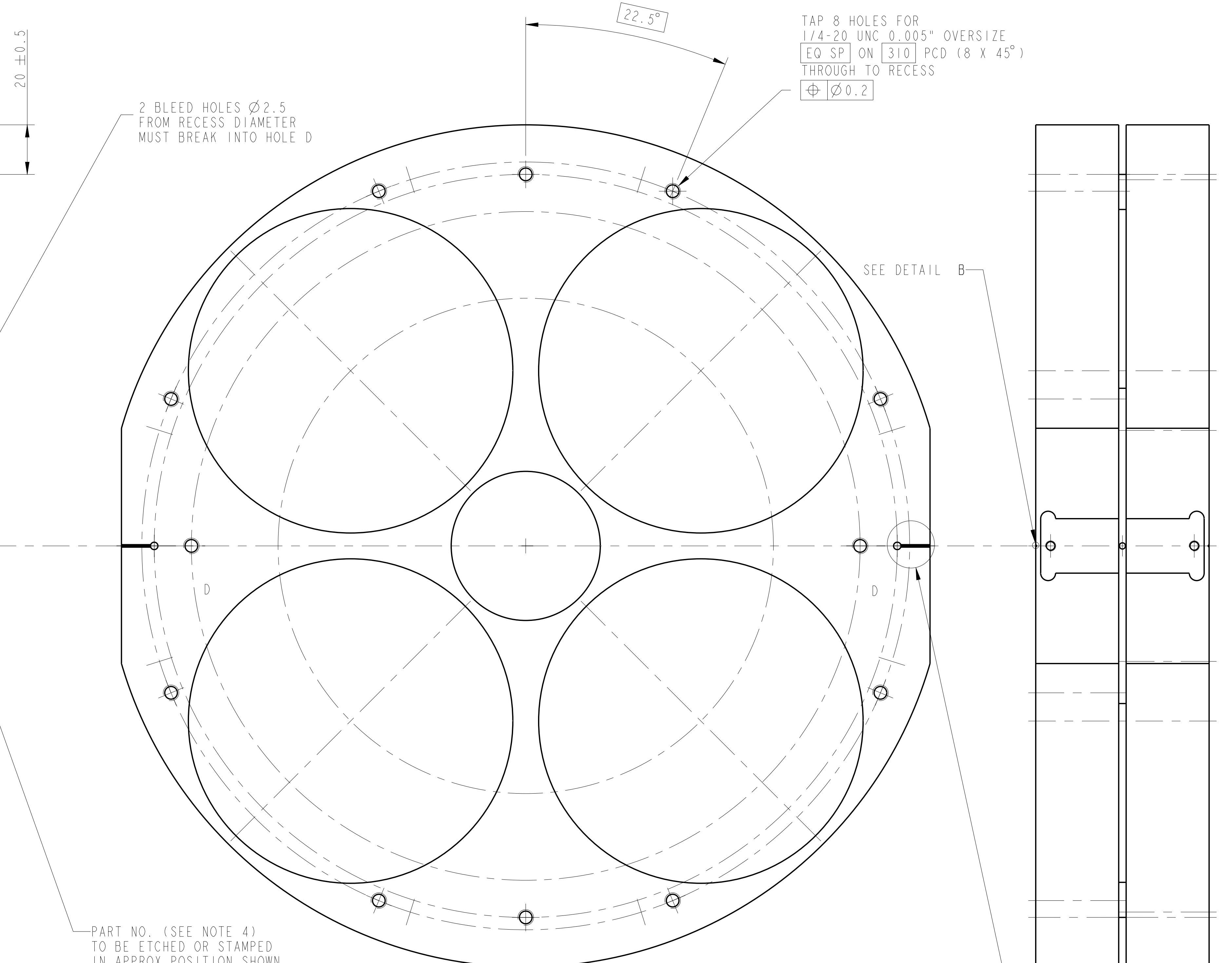
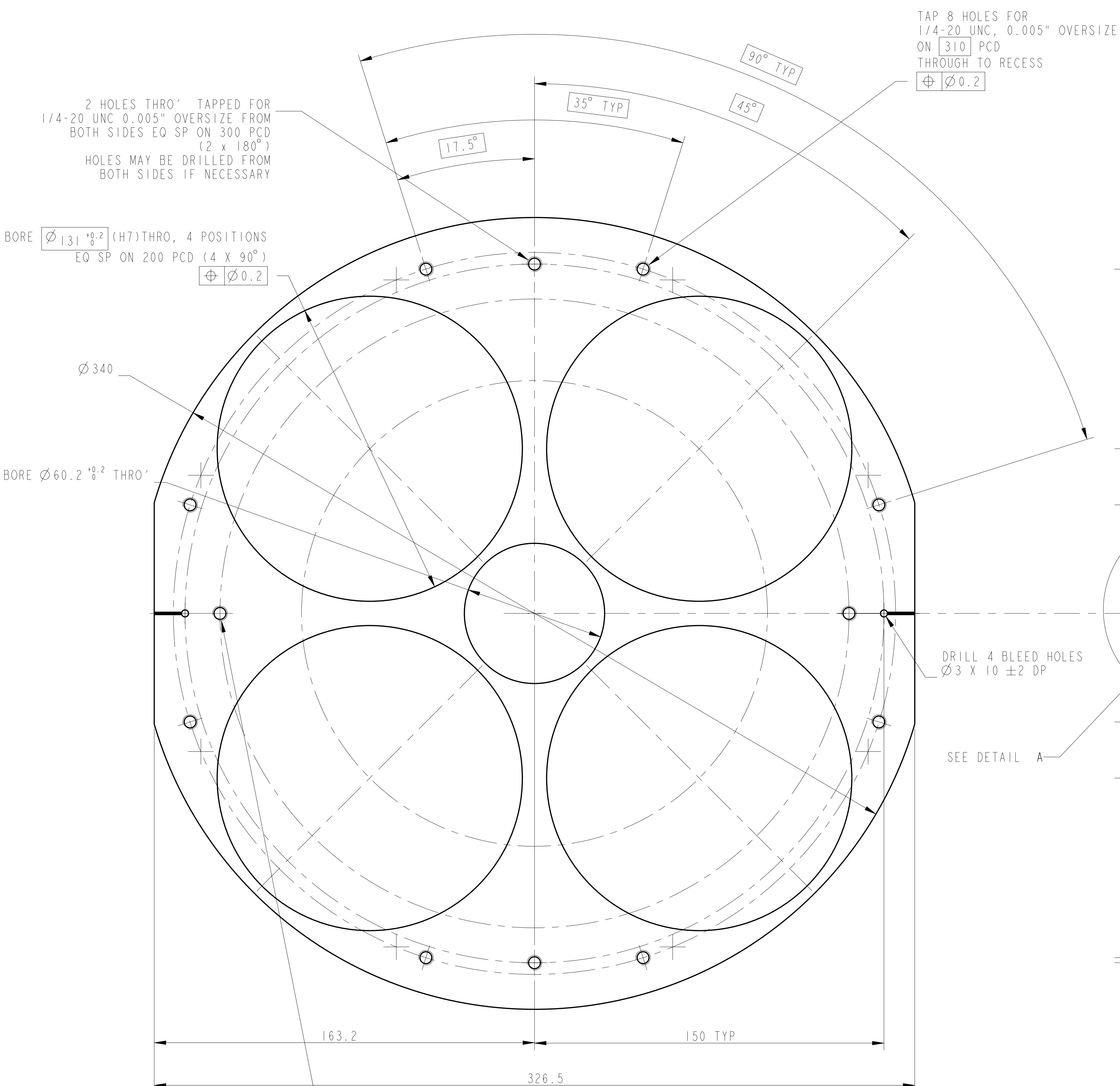
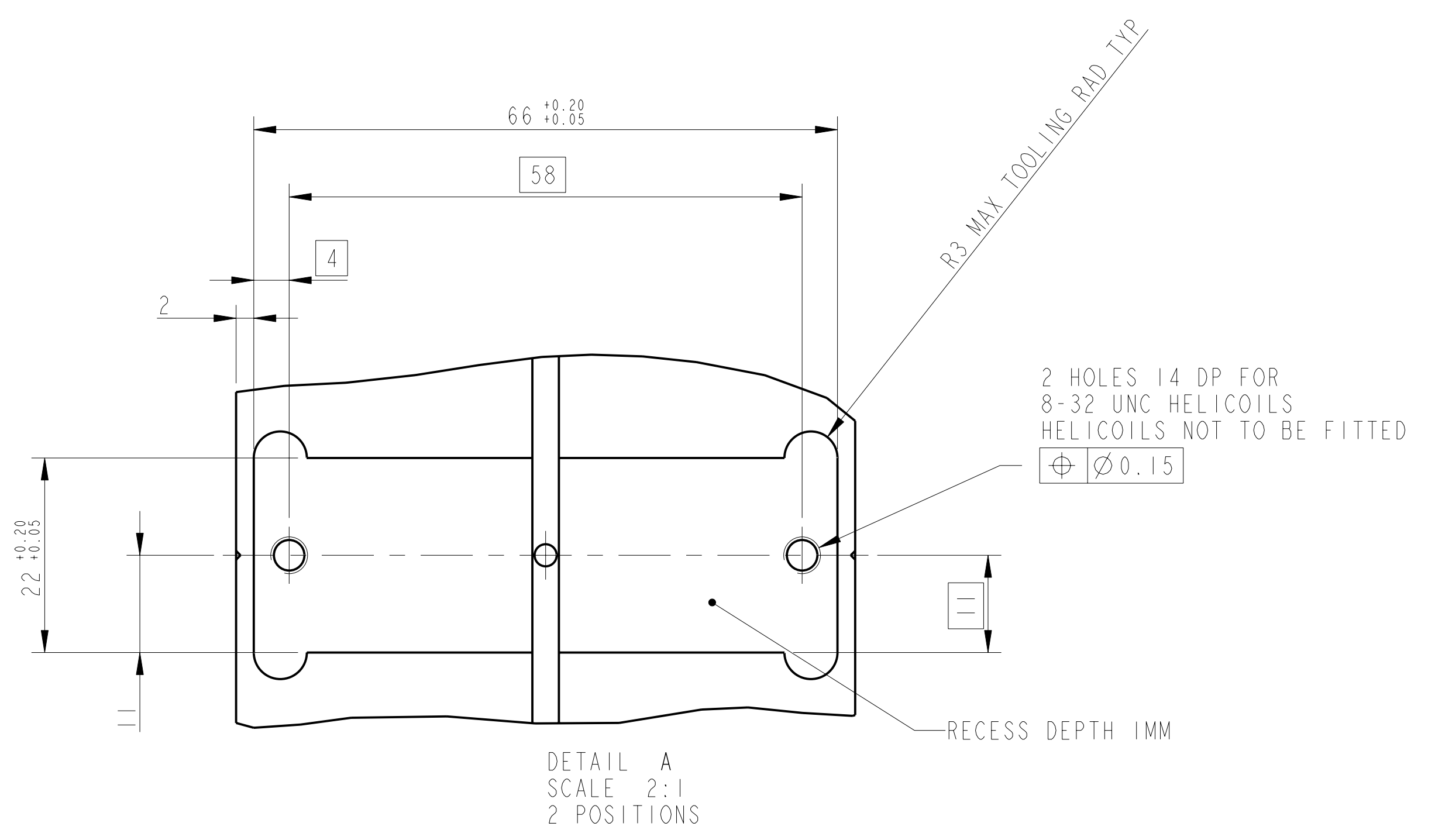
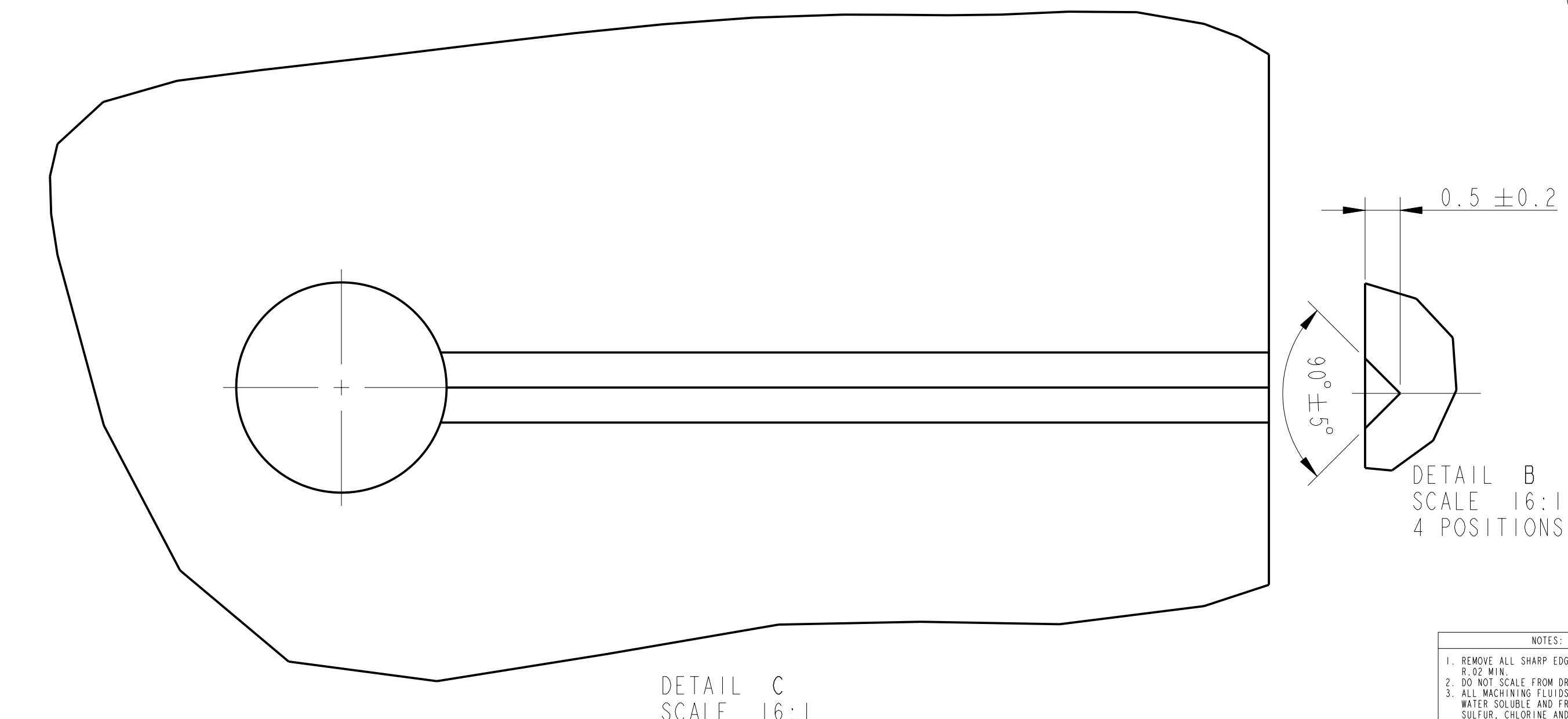


REV	DATE	CHK	QUANTITY
A	15/OCT/08	ED00240	
B	20/DEC/07	ED00240-B	
F	21/JULY/08	ED00239	



TAP 2 HOLES THRO' FOR 1/4-20 UNC, 0.005" OVERSIZE FROM BOTH SIDES EQ SP ON 270 PCD (2 X 180°) HOLES MAY BE DRILLED FROM BOTH SIDES IF NECESSARY



NOTES: UNLESS OTHERWISE SPECIFIED:

- REMOVE ALL SHARP EDGES.
- DO NOT SCALE FROM DIMENSIONS.
- ALL DIMENSIONS ARE IN mm UNLESS INDICATED OTHERWISE.
- ALL WORKING DIMENSIONS SHALL BE GIVEN TO THE NEAREST 0.1 mm UNLESS INDICATED OTHERWISE.
- USE UNLESS OTHERWISE SPECIFIED.
- SEE DETAIL A FOR DIMENSIONS OF PART AND A TYPICAL DIGIT STYL NUMBER OF THE WORKING SURFACE.
- SEE DETAIL B FOR DIMENSIONS OF THE PART AND A TYPICAL DIGIT STYL NUMBER OF THE WORKING SURFACE.
- SEE DETAIL C FOR DIMENSIONS OF THE PART AND A TYPICAL DIGIT STYL NUMBER OF THE WORKING SURFACE.

MATERIAL:	316L SS	FINISH:	CLN
TOLERANCE:	± 0.15	MARKING:	SEE DETAIL A
QUANTITY:	100	DATE:	15/OCT/08
APPROVED:	[Signature]	DESIGNED BY:	ED00240
DATE:	15/OCT/08	PROJECT:	ADVANCED LIGO
SCALE:	16:1	SYSTEM:	SUB-SYSTEM BUS
REVISION:	1	PART NAME:	PENRE ETM QUAD NPTYPE
DESIGNER:	ED00240	PART NO.:	CENTRAL MASS
DRAWN:	ED00240	DATE:	15/OCT/08
CHECKED:	ED00240	APPROVED:	ED00240
DATE:	15/OCT/08	SCALE:	16:1

CALIFORNIA INSTITUTE OF TECHNOLOGY
JULIAN BARCELONA
CALIFORNIA INSTITUTE OF TECHNOLOGY
ADVANCED LIGO
SUB-SYSTEM BUS
PENRE ETM QUAD NPTYPE
CENTRAL MASS
D00042
PAGE 1 OF 1