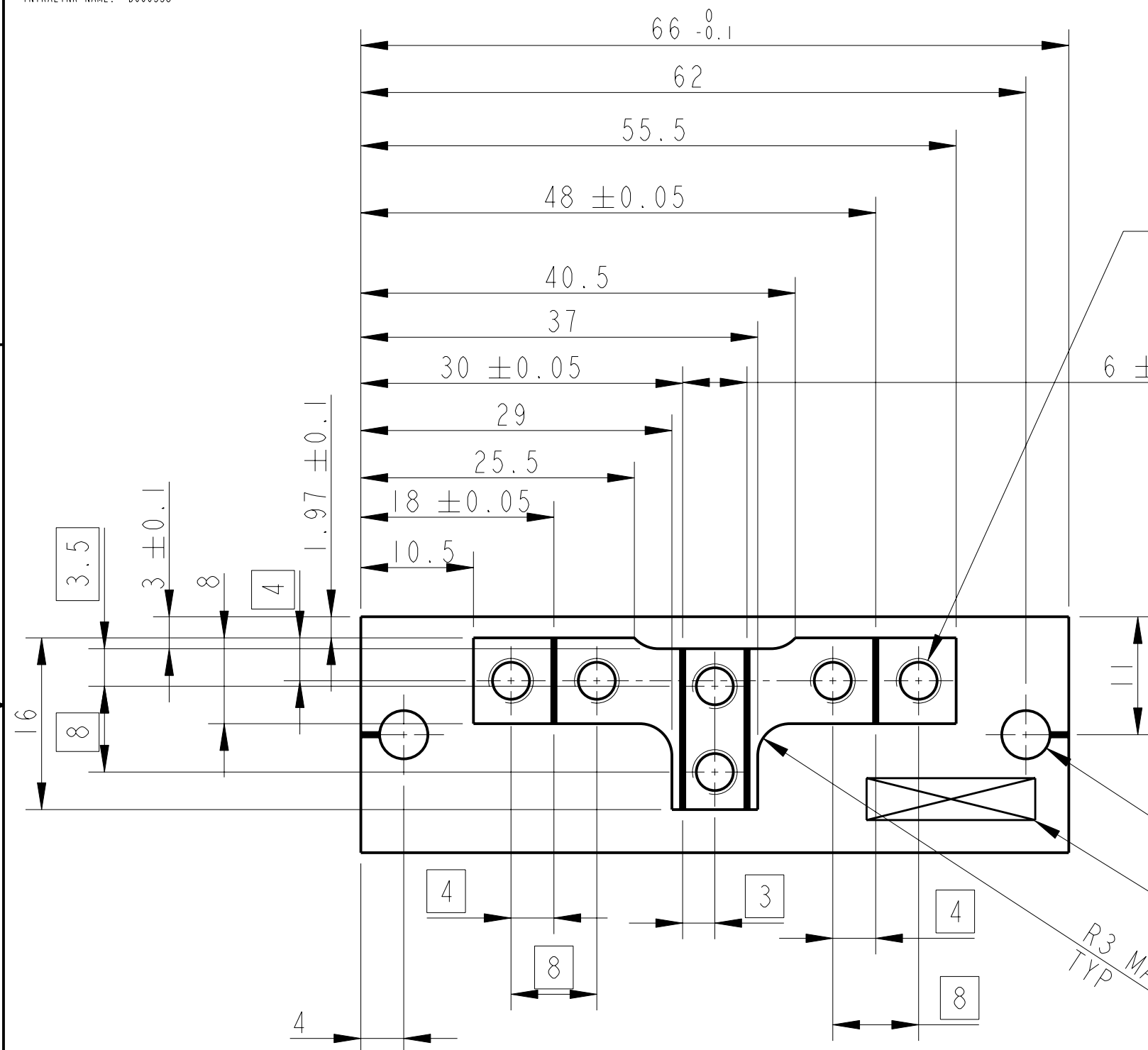


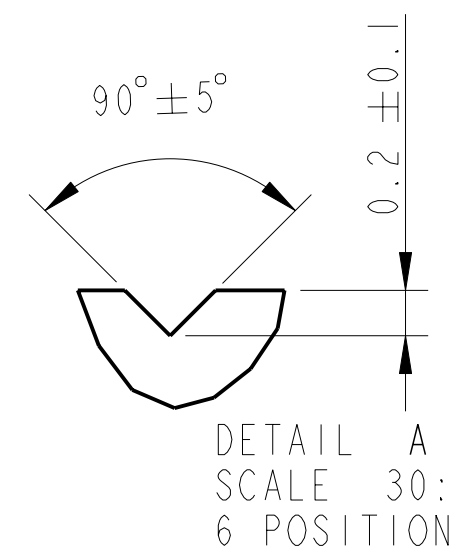
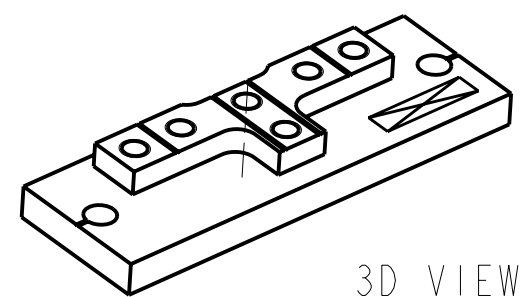
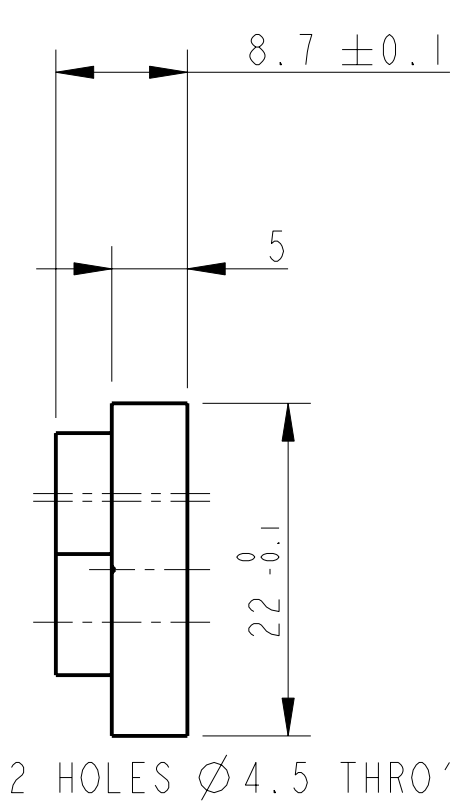
REV.	DATE	DCN #	DRAWING TREE #
A	15/OCT/06	E060240	
B	20/DEC/07	E060240-B	
F	18/JULY/08	E080370	

D
C
B
A



TAP 6-THRU HOLES FOR 8-32 UNC HELICOILS. HELICOILS NOT TO BE FITTED.

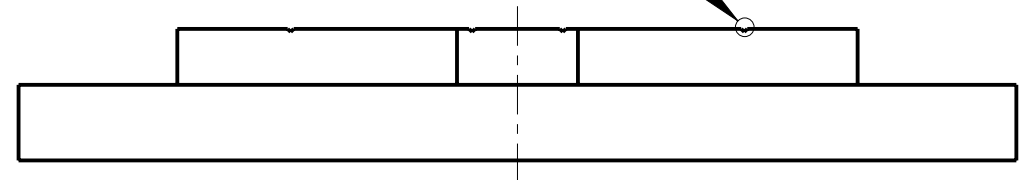
⊕ ∅0.2



R3 MAX TOOLING RAD TYP

PART NO. (SEE NOTE 4) TO BE ETCHED OR STAMPED IN APPROX POSITION SHOWN.

SEE DETAIL A



SCALE 2:1

NOTES: (UNLESS OTHERWISE SPECIFIED)		DIMENSIONS ARE IN mm [INCHES]		TOLERANCES:	
1. REMOVE ALL SHARP EDGES, R.02 MIN.		X.XX ±0.2 mm		ANGULAR ±0.25 °	
2. DO NOT SCALE FROM DRAWING.		MATERIAL: ST. STEEL 304/316		FINISH: CLEAN, GREASE FREE	
3. ALL MACHINING FLUIDS SHALL BE WATER SOLUBLE AND FREE OF SULFUR, CHLORINE AND SILICONE, SUCH AS CINCINNATI MILACRON'S CIMTECH 410 (STAINLESS STEEL)		√μm [μin]		Ra = 1.6	
4. SCRIBE, ENGRAVE OR STAMP DRAWING PART NUMBER ON NOTED SURFACE OF PART AND A THREE DIGIT SERIAL NUMBER. SERIAL NUMBERS START AT 001 FOR THE FIRST PART AND PROCEED CONSECUTIVELY. USE .07" HIGH CHARACTERS. EXAMPLE: D020188- 001. A VIBRATORY TOOL MAY BE USED.		NAME	DATE	SIZE	REV
		DRAWN	J O'DELL	21/09/06	B
		CHECKED	AJB	29MAY08	
		APPROVED	AJB	18/JULY/08	F.
		DRG. NO. D060338		SHEET 1 OF 1	

CALIFORNIA INSTITUTE OF TECHNOLOGY
MASSACHUSETTS INSTITUTE OF TECHNOLOGY
IGR, GLASGOW UNIVERSITY GEO 600 GROUP
RUTHERFORD APPLETON LABORATORIES

SYSTEM **ADVANCED LIGO**
SUB-SYSTEM **SUS**
NEXT ASSY **PENRE ETM QUAD N-PTYPE**
PART NAME **ROUND MASS WIRE CLAMP PLATE**
PEN-RE MASS WIRE CLAMP

SCALE 1:1 PROJECTION: SHEET 1 OF 1