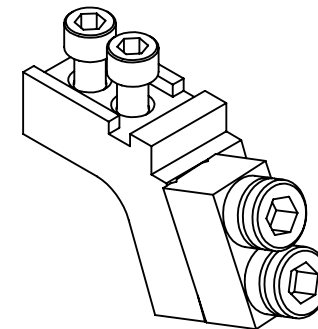
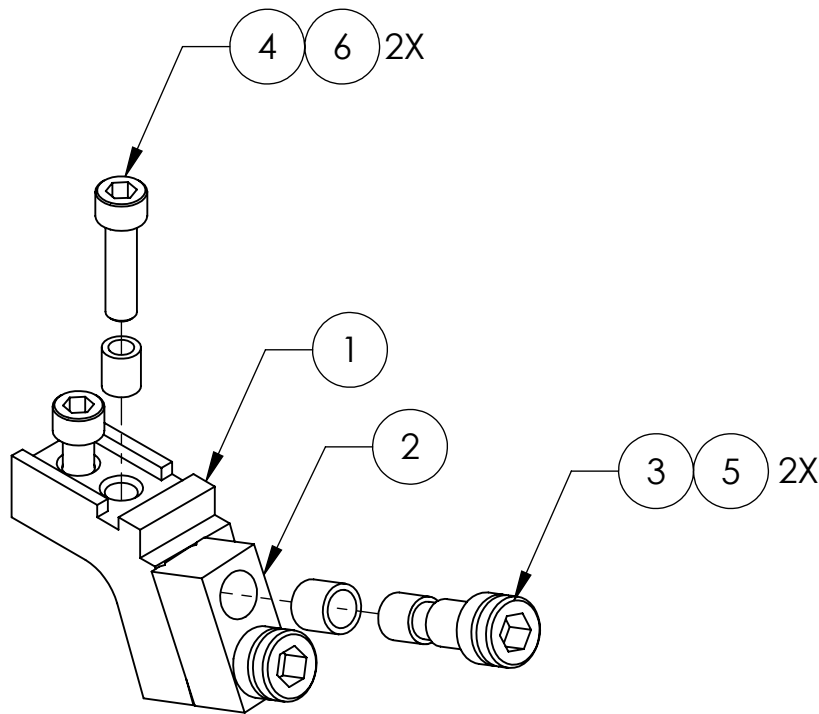


REV.	DATE	DCN #	DRAWING TREE #
A	13 OCT 2006	E060238	-
E	15 JUL 2008	E080367	-
v3	17 MAY 2013	E1300455	-



ISOMETRIC VIEW
SCALE: 1:1

6	HELICOIL_1185-2EN246	HELICOIL INSERT 8-32 NITRONIC 60	NITRONIC 60	2		2
5	HELICOIL_1185-4EN250	HELICOIL INSERT 1/4-20 NITRONIC 60	NITRONIC 60	2		2
4	HOLOKROME_78030	SHCS, #8-32x.625"	18-8 SS	2		2
3	D060335	RECESSED 1/4" 20 UNC X 0.75" CAP HEAD	304 SSSL	2		2
2	D060334	WIRE CLAMP JAW, ALL MASSES	304/316 S.ST	1		1
1	D060333	WIRE CLAMP BODY, TOP STAGE	304/316 S.ST.	1		1
ITEM NO.	PART NUMBER	DESCRIPTION	MATERIAL	REQ	SPARE	TOTAL

PARTS LIST

NOTES AND TOLERANCES: (UNLESS OTHERWISE SPECIFIED)

DIMENSIONS ARE IN INCHES

TOLERANCES:
.XX ± .01
.XXX ± .005

ANGULAR ± 0.5°

- INTERPRET DRAWING PER ASME Y14.5-1994.
- REMOVE ALL SHARP EDGES .005-.015. FOR MACHINED PARTS. ROUND ALL EDGES APPROXIMATELY R.02 FOR SHEET METAL PARTS.
- DO NOT SCALE FROM DRAWING.
- ALL MACHINING FLUIDS MUST BE FULLY SYNTHETIC, FULLY WATER SOLUBLE AND FREE OF SULFUR, SILICONE, AND CHLORINE.

MATERIAL

N/A

FINISH

N/A μinch

LIGO CALIFORNIA INSTITUTE OF TECHNOLOGY
MASSACHUSETTS INSTITUTE OF TECHNOLOGY

SYSTEM
ADVANCED LIGO

SUB-SYSTEM
SUS

NEXT ASSY
D060324

PART NAME

TOP STAGE, WIRE CLAMP

DESIGNER	J.ODELL	06 OCT 2006
DRAFTER	B. MOORE	07 JUN 2013
CHECKER		
APPROVAL		

SIZE DWG. NO.
A D060332

REV.
v3

SCALE: 1:1 PROJECTION: SHEET 1 OF 1