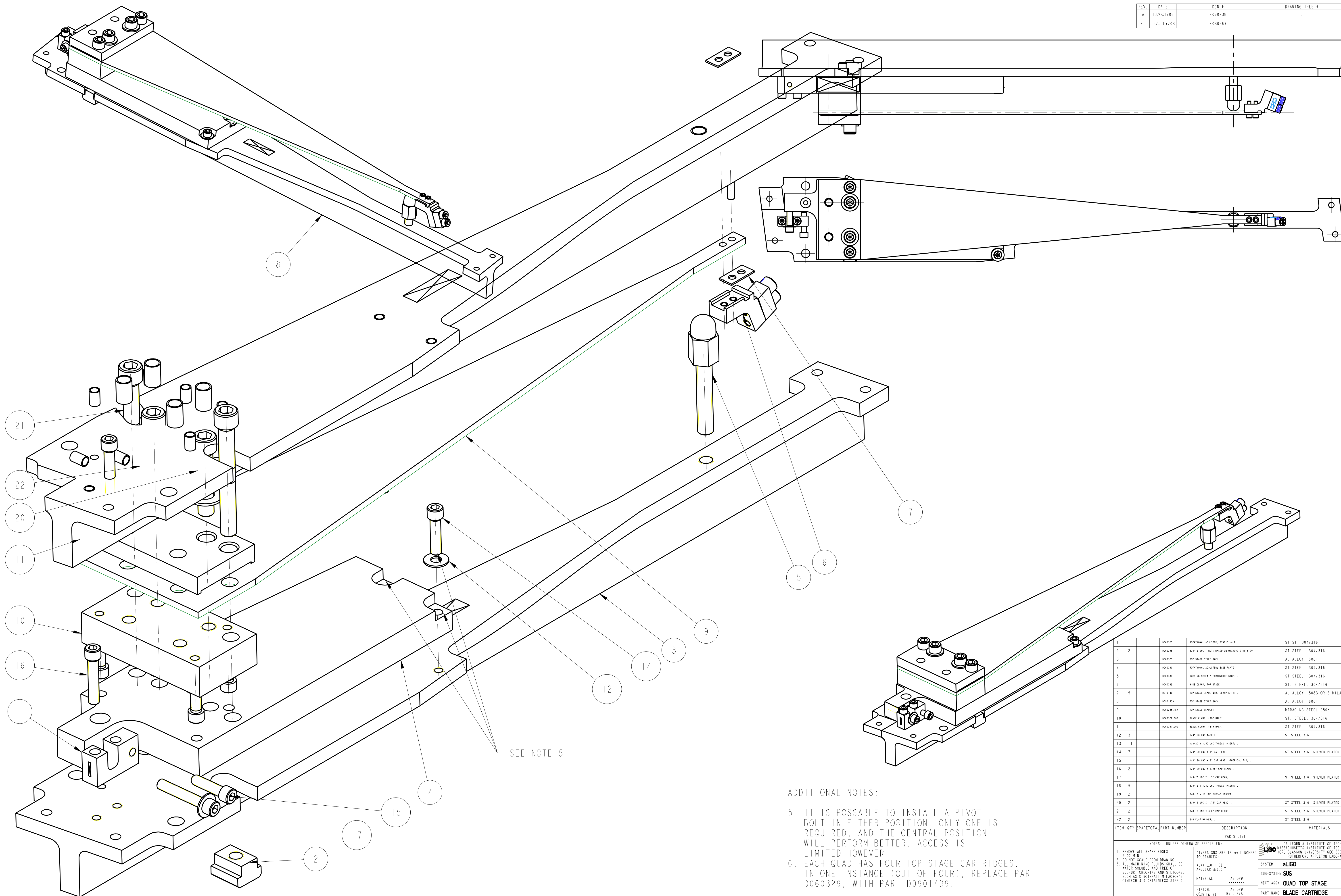


REV.	DATE	DCN #	DRAWING TREE #
A	13/OCT/06	E060238	
E	15/JULY/08	E080367	



ADDITIONAL NOTES:

- IT IS POSSIBLE TO INSTALL A PIVOT BOLT IN EITHER POSITION. ONLY ONE IS REQUIRED, AND THE CENTRAL POSITION WILL PERFORM BETTER. ACCESS IS LIMITED HOWEVER.
- EACH QUAD HAS FOUR TOP STAGE CARTRIDGES. IN ONE QUAD (OUT OF FOUR), REPLACE PART D060329, WITH PART D0901439.

ITEM	QTY	SPARE	TOTAL	PART NUMBER	DESCRIPTION	MATERIALS
1	1			D060305	ROTATIONAL ADJUSTER, STATIC HALF	ST ST: 304/316
2	2			D060329	3/8" IN UNC 1 NUT, BASED ON W/ROOF DATA W/20	ST STEEL: 304/316
3	1			D060329	TOP STAGE STIFF BACK	AL ALLOY: 6061
4	1			D060330	ROTATIONAL ADJUSTER, BASE PLATE	ST STEEL: 304/316
5	1			D060331	JACKING SCREW F/ EARTRUCKING STOP	ST STEEL: 304/316
6	1			D060332	WIRE CLAMP, TOP STAGE	ST STEEL: 304/316
7	5			D050140	TOP STAGE BLADE WIRE CLAMP SHIM	AL ALLOY: 5083 OR SIMILAR
8	1			D0901439	TOP STAGE STIFF BACK	AL ALLOY: 6061
9	1			D060239, PLAT	TOP STAGE BLADES	MARAGING STEEL 250
10	1			D060329, 100	BLADE CLAMP, TOP HALF	ST STEEL: 304/316
11	1			D060327, 100	BLADE CLAMP, 100M HALF	ST STEEL: 304/316
12	3				1/4" 20 UNC BUSHING	ST STEEL 316
13	11				1/4" 20 x 1.50 UNC THREAD INSERT	
14	7				1/4" 20 UNC x 1" CAP HEAD	ST STEEL 316, SILVER PLATED
15	1				1/4" 20 UNC x 1.25" CAP HEAD, SPHERICAL TIP	
16	2				1/4" 20 UNC x 1.5" CAP HEAD	
17	1				1/4" 20 UNC x 1.5" CAP HEAD	ST STEEL 316, SILVER PLATED
18	5				3/8" IN x 1.50 UNC THREAD INSERT	
19	2				3/8" IN x 1.50 UNC THREAD INSERT	
20	2				3/8" IN UNC x 1.75" CAP HEAD	ST STEEL 316, SILVER PLATED
21	2				3/8" IN UNC x 3" CAP HEAD	ST STEEL 316, SILVER PLATED
22	2				3/8" FLAT WASHER	ST STEEL 316

NOTES: (UNLESS OTHERWISE SPECIFIED)

- REMOVE ALL SHARP EDGES. R.02 MIN.
- DO NOT SCALE FROM DRAWING.
- ALL MACHINING FLUIDS SHALL BE WATER SOLUBLE AND FREE OF SULFUR, CHLORINE AND SILICONE. SUCH AS CINCINNATI WILCOXON'S CIMTECH 410 (STAINLESS STEEL)

DIMENSIONS ARE IN mm (INCHES)

TOLERANCES:

FINISH: AS DRW

SCALE: 1:21 PROJECTION: 4

DATE: 15/MAR/10

DRAWN: JWB

CHECKED: MB

APPROVED: JWB

SYSTEM: aLIGO

SUB-SYSTEM: SUS

NEXT ASSY: QUAD TOP STAGE

PART NAME: BLADE CARTRIDGE

DRG. NO.: D060324

SHEET 1 OF 1