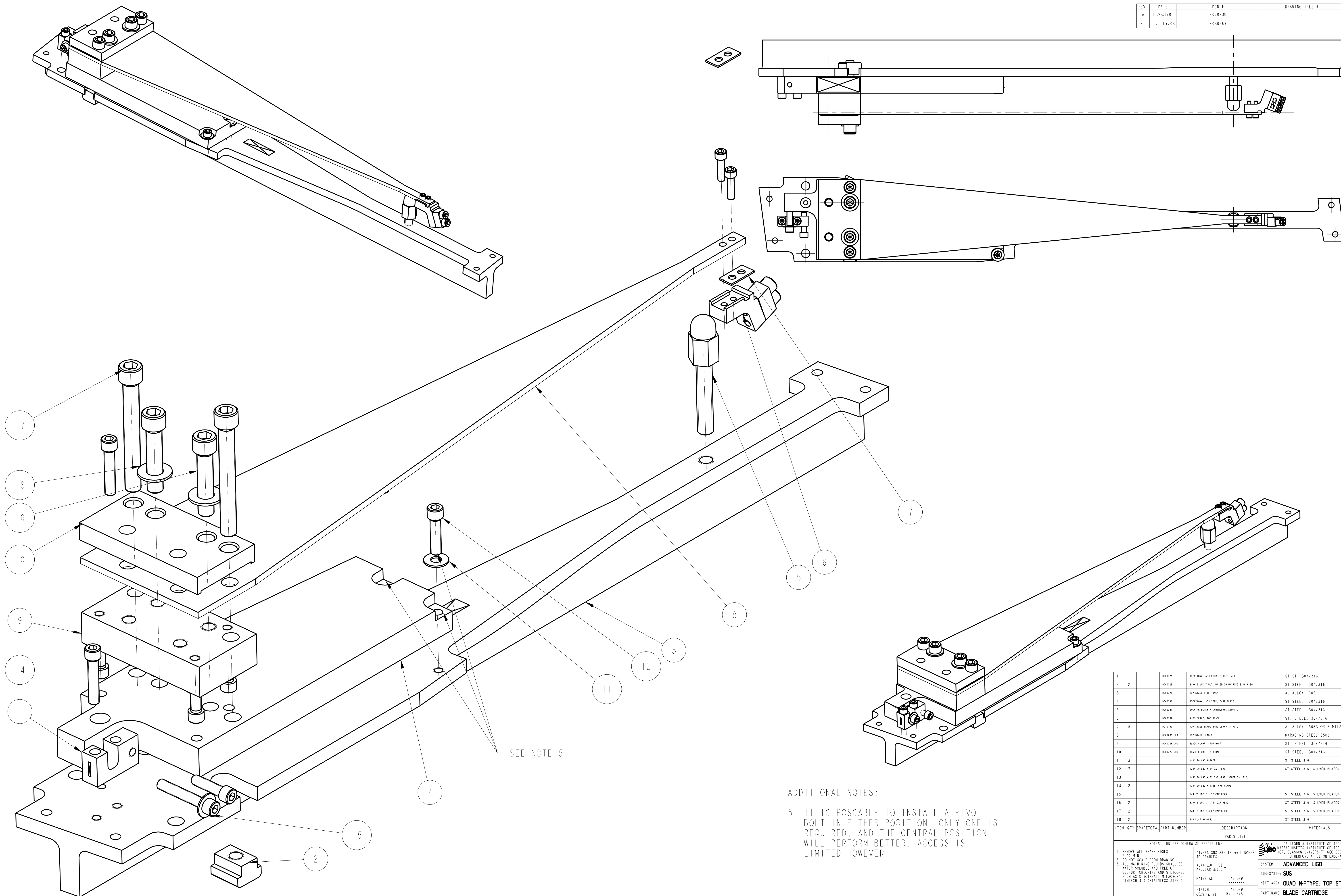


REV.	DATE	DCN #	DRAWING TREE #
A	13/OCT/06	E060238	
E	15/JULY/08	E080367	



ADDITIONAL NOTES:

- IT IS POSSIBLE TO INSTALL A PIVOT BOLT IN EITHER POSITION. ONLY ONE IS REQUIRED, AND THE CENTRAL POSITION WILL PERFORM BETTER. ACCESS IS LIMITED HOWEVER.

ITEM	QTY	SPARE	TOTAL	PART NUMBER	DESCRIPTION	MATERIALS
1	1			000015	ROTATIONAL ADJUSTER, STATIC HALF	ST STEEL: 304/316
2	2			000028	3/8"-14 UNC 1.1875" BASED ON WIREWOUND 2440.0120	ST STEEL: 304/316
3	1			000029	TOP STAGE STIFF BACK	AL ALLOY: 6061
4	1			000030	ROTATIONAL ADJUSTER, BASE PLATE	ST STEEL: 304/316
5	1			000031	LATCHING SCREW W/ SHIMMING STOP	ST STEEL: 304/316
6	1			000032	WIRE CLAMP, TOP STAGE	ST STEEL: 304/316
7	5			010141	TOP STAGE BLADE WIRE CLAMP SHIM	AL ALLOY: 5083 OR SIMILAR
8	1			000029-PLAT	TOP STAGE BLADES	MARAGING STEEL 250
9	1			000028-100	BLADE CLAMP, TOP HALF	ST STEEL: 304/316
10	1			000027-100	BLADE CLAMP, BOTTOM HALF	ST STEEL: 304/316
11	3				1/4" 20 UNC WASHER	ST STEEL 316
12	7				1/4" 20 UNC X 1" CAP HEAD	ST STEEL 316, SILVER PLATED
13	1				1/4" 20 UNC X 1.25" CAP HEAD, SPHERICAL TIP	
14	2				1/4" 20 UNC X 1.25" CAP HEAD	
15	1				1/4" 20 UNC X 1.25" CAP HEAD	ST STEEL 316, SILVER PLATED
16	2				3/8"-14 UNC X 1.25" CAP HEAD	ST STEEL 316, SILVER PLATED
17	2				3/8"-14 UNC X 1.25" CAP HEAD	ST STEEL 316, SILVER PLATED
18	2				3/8" FLAT WASHER	ST STEEL 316

NOTES: (UNLESS OTHERWISE SPECIFIED)

- REMOVE ALL SHARP EDGES, 0.02 MIN.
- DO NOT SCALE FROM DRAWING.
- ALL MACHINING FLUIDS SHALL BE WATER SOLUBLE AND FREE OF SULFUR, CHLORINE AND SILICONE, SUCH AS CINCINNATI WILCOXON'S CIMTECH 410 (STAINLESS STEEL)

DIMENSIONS ARE IN mm (INCHES)

FINISH: AS DRW

SCALE: 1:21 PROJECTION: 4

CALIFORNIA INSTITUTE OF TECHNOLOGY
 MASSACHUSETTS INSTITUTE OF TECHNOLOGY
 GLASGOW UNIVERSITY GEO GROUP
 RUTHERFORD APPLTON LABORATORIES

SYSTEM: **ADVANCED LIGO**

SUB-SYSTEM: **SUS**

NEXT ASSY: **QUAD N-TYPE; TOP STAGE**

PART NAME: **BLADE CARTRIDGE**

DATE: 15/07/08

BY: [Signature]

DRG. NO.: **D060324**

SHEET 1 OF 1