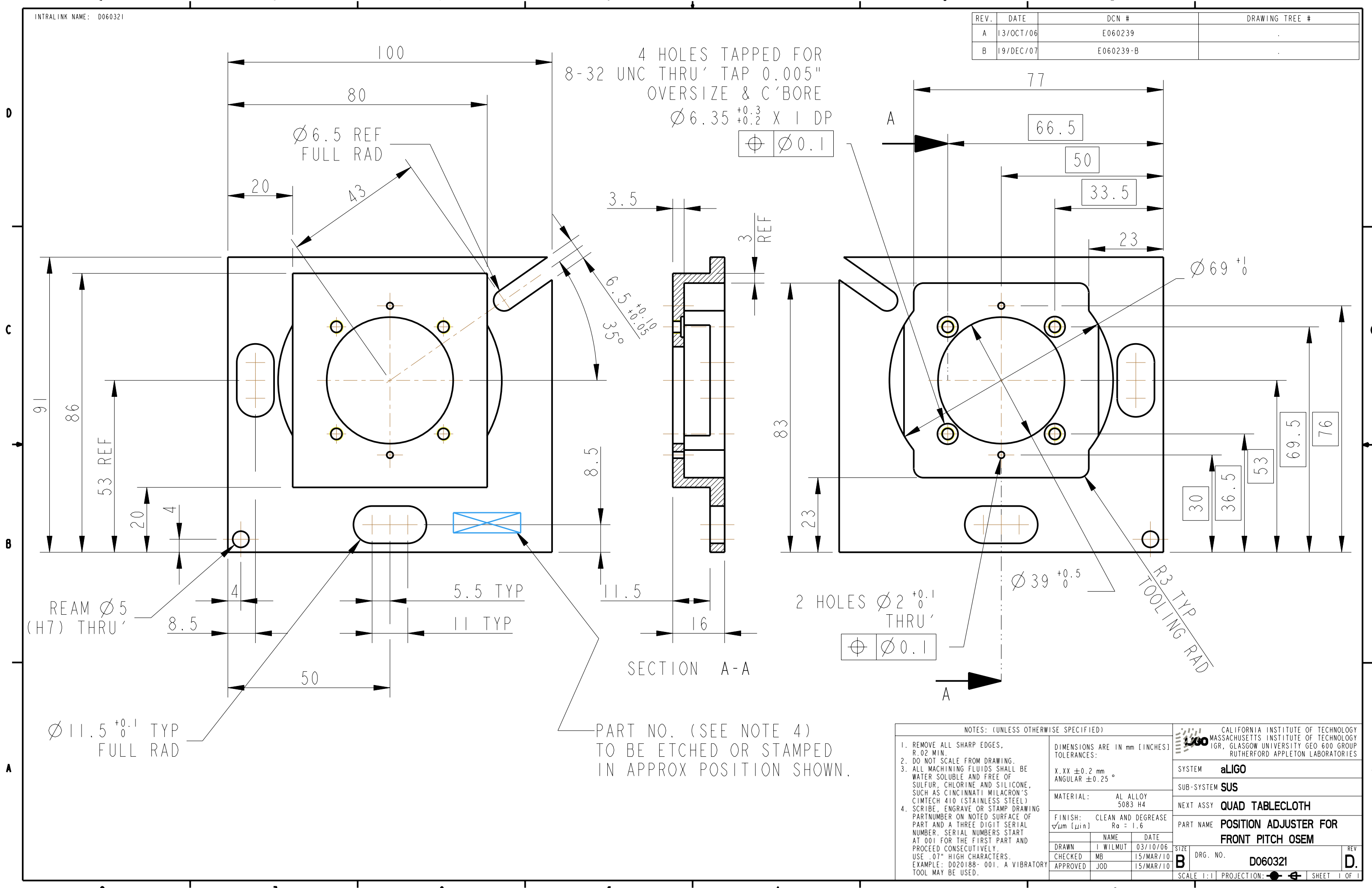


REV.	DATE	DCN #	DRAWING TREE #
A	13/OCT/06	E060239	
B	19/DEC/07	E060239-B	



4 HOLES TAPPED FOR
8-32 UNC THRU' TAP 0.005"
OVERSIZE & C'BORE
 $\varnothing 6.35^{+0.3}_{+0.2}$ X 1 DP

\varnothing	$\varnothing 0.1$
---------------	-------------------

SECTION A-A

PART NO. (SEE NOTE 4)
TO BE ETCHED OR STAMPED
IN APPROX POSITION SHOWN.

NOTES: (UNLESS OTHERWISE SPECIFIED)

- REMOVE ALL SHARP EDGES, R.02 MIN.
- DO NOT SCALE FROM DRAWING.
- ALL MACHINING FLUIDS SHALL BE WATER SOLUBLE AND FREE OF SULFUR, CHLORINE AND SILICONE, SUCH AS CINCINNATI MILACRON'S CIMTECH 410 (STAINLESS STEEL)
- SCRIBE, ENGRAVE OR STAMP DRAWING PARTNUMBER ON NOTED SURFACE OF PART AND A THREE DIGIT SERIAL NUMBER. SERIAL NUMBERS START AT 001 FOR THE FIRST PART AND PROCEED CONSECUTIVELY. USE .07" HIGH CHARACTERS. EXAMPLE: D020188- 001. A VIBRATORY TOOL MAY BE USED.

DIMENSIONS ARE IN mm [INCHES]	
TOLERANCES:	
X.XX ± 0.2 mm	
ANGULAR $\pm 0.25^\circ$	
MATERIAL: AL ALLOY 5083 H4	
FINISH: CLEAN AND DEGREASE	
$\sqrt{\mu m}$ [μin] $R_a = 1.6$	
NAME	DATE
DRAWN I WILMUT	03/10/06
CHECKED MB	15/MAR/10
APPROVED JOD	15/MAR/10

CALIFORNIA INSTITUTE OF TECHNOLOGY MASSACHUSETTS INSTITUTE OF TECHNOLOGY IGR, GLASGOW UNIVERSITY GEO 600 GROUP RUTHERFORD APPLETON LABORATORIES	
SYSTEM	aLIGO
SUB-SYSTEM	SUS
NEXT ASSY	QUAD TABLECLOTH
PART NAME	POSITION ADJUSTER FOR FRONT PITCH OSEM
SIZE	B
DRG. NO.	D060321
SHEET	1 OF 1