

D0901451_ADLIGO_TCS_LASER_ENCLOSURE_DUMP_MIRROR, PART PDM REV: X-000, DRAWING PDM REV: X-001

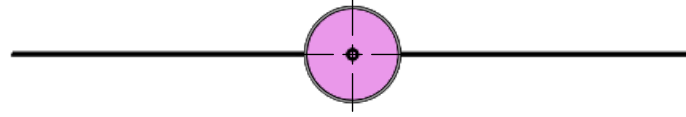
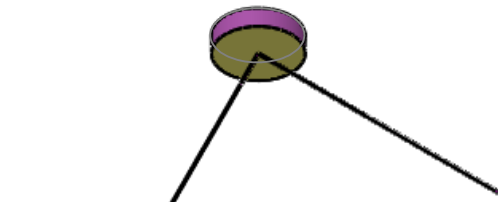
8 7 6 5 4 3 2 1

NOTES CONTINUED:
⑤ BAG ALL ITEMS INDIVIDUALLY AND MARK OR TAG EACH BAG WITH DRAWING NUMBER, REVISION, AND QUANTITY. EXAMPLE: DXXXXXX-VY, QTY: 1

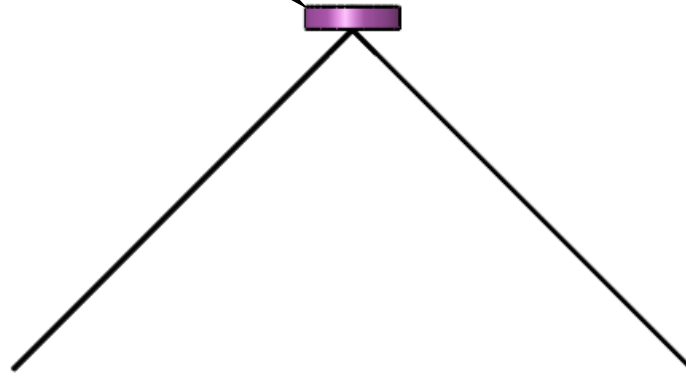
REV.	DATE	DCN #	DRAWING TREE #
-	07-29-2009	E0900223-v1	-
-	-	-	-
-	-	-	-

D
C
B
A

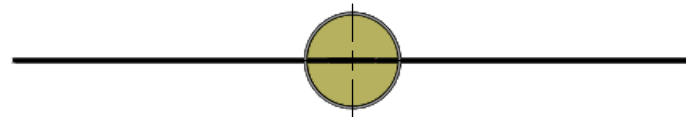
D
C
B
A



COPPER MIRROR WITH 3MM TAP IN CENTER BACK SIDE



REFLECTED BEAM REF



NOTES AND TOLERANCES: (UNLESS OTHERWISE SPECIFIED)				LIGO		CALIFORNIA INSTITUTE OF TECHNOLOGY MASSACHUSETTS INSTITUTE OF TECHNOLOGY		PART NAME	
DIMENSIONS ARE IN INCHES				ADVANCED LIGO		SUB-SYSTEM		ADLIGO_TCS_LASER_ENCLOSURE_DUMP_MIRROR	
TOLERANCES: .XX ± .XXX ±				NEXT ASSY		AOS		DESIGNER	
ANGULAR ± °				D0901417		KMAILAND		07-17-2009	
MATERIAL				FINISH		KMAILAND		07-17-2009	
LASER BEAM PROD. SNICU 25MM				N/A		DESIGNER		07-17-2009	
						CHECKER		SCALE: 1:2	
						APPROVAL		PROJECTION:	
								SHEET 1 OF 1	
								SIZE DWG. NO.	
								B D0901451	
								REV.	
								v1	

8 7 6 5 4 3 2 1