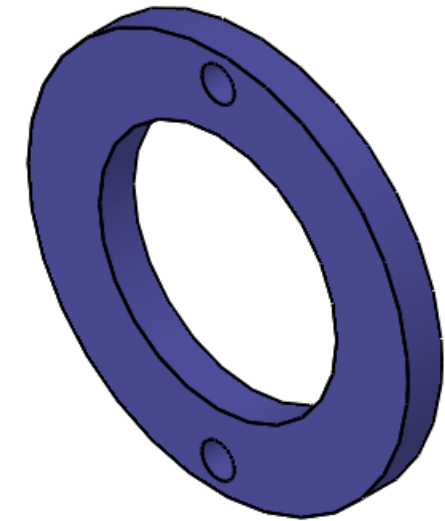
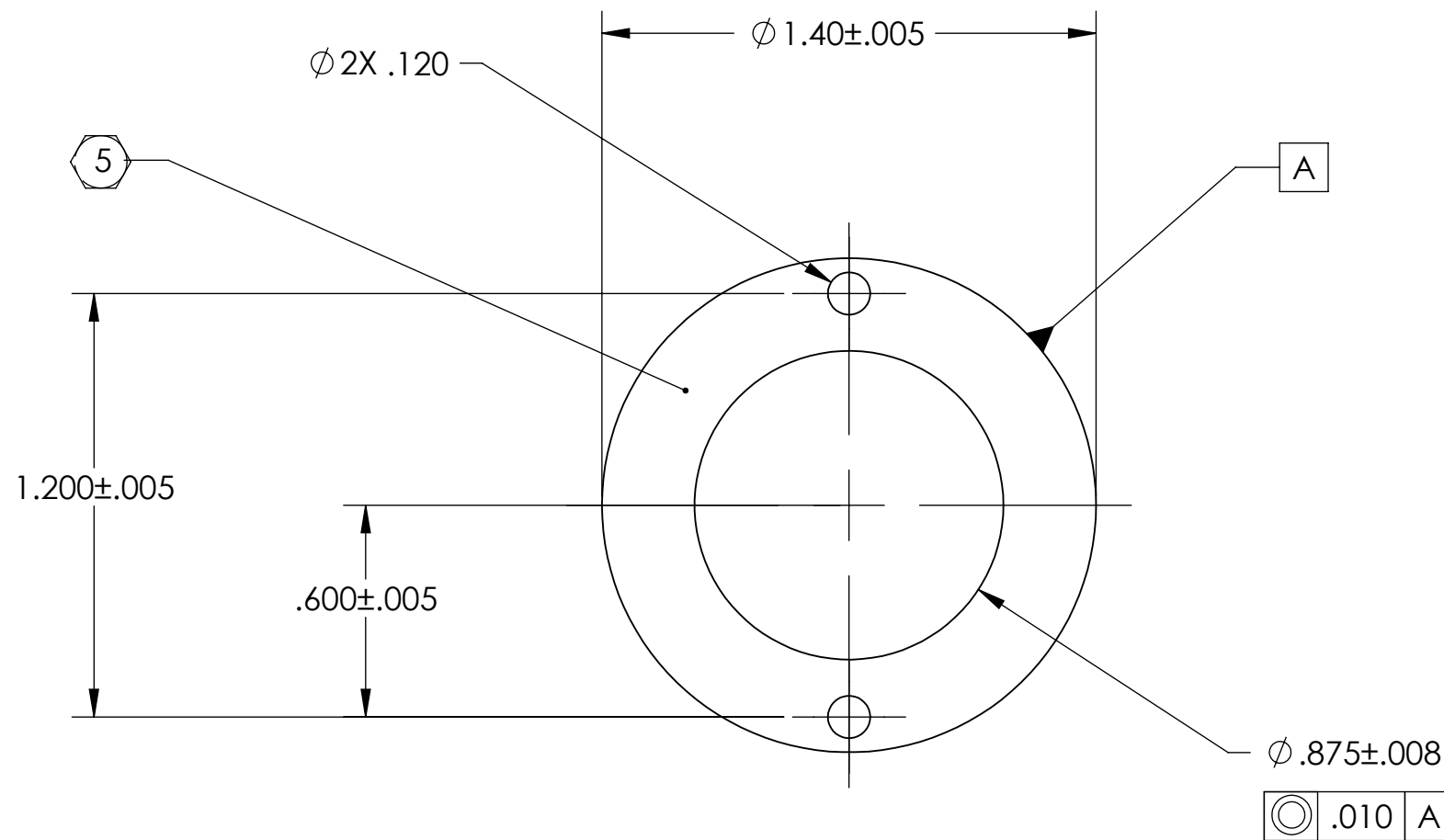


D0901434\_ADLIGO\_TCS\_LASER\_ENCLOSURE\_LASER\_WINDOW\_RING, PART PDM REV: X-000, DRAWING PDM REV: X-001

**NOTES CONTINUED:**  
 5 SCRIBE, ENGRAVE, OR MECHANICALLY STAMP (NO INKS OR DYES) DRAWING PART NUMBER AND REVISION ON NOTED SURFACE FOLLOWED ON THE NEXT LINE BY A THREE DIGIT SERIAL NUMBER. SERIAL NUMBERS START AT 001 FOR THE FIRST ARTICLE AND PROCEED CONSECUTIVELY. USE .07" HIGH CHARACTERS. EXAMPLE: DXXXXXX-VY, S/N 001. A VIBRATORY TOOL MAY BE USED.

REV.	DATE	DCN #	DRAWING TREE #
-	07-29-2009	E0900223-v1	-
-	-	-	-
-	-	-	-



**NOTES AND TOLERANCES: (UNLESS OTHERWISE SPECIFIED)**

DIMENSIONS ARE IN INCHES  
 TOLERANCES:  
 .XX  $\pm .02$   
 .XXX  $\pm .005$   
 ANGULAR  $\pm 1.0^\circ$

1. INTERPRET DRAWING PER ASME Y14.5-1994.
2. REMOVE ALL SHARP EDGES, R.02 MIN.
3. DO NOT SCALE FROM DRAWING.
4. ALL MACHINING FLUIDS SHALL BE WATER SOLUBLE AND FREE OF SULFUR, CHLORINE AND SILICONE, SUCH AS CINCINNATI MILACRON'S CIMTECH 410.

MATERIAL 6061-T6 FINISH N/A

**LIGO** CALIFORNIA INSTITUTE OF TECHNOLOGY  
 MASSACHUSETTS INSTITUTE OF TECHNOLOGY  
 SYSTEM ADVANCED LIGO SUB-SYSTEM AOS  
 NEXT ASSY D0901417

PART NAME ADLIGO\_TCS\_LASER\_ENCLOSURE\_LASER\_WINDOW\_RING  
 DESIGNER KMAILAND 07-15-2009  
 DRAFTER KMAILAND 07-17-2009  
 CHECKER  
 APPROVAL  
 SIZE DWG. NO. B D0901434  
 REV. v1  
 SCALE: 2:1 PROJECTION: SHEET 1 OF 1