

D0901425_AD_LIGO_TCS_LASER_ENCLOSURE_MIRROR_ROD, PART PDM REV: X-000, DRAWING PDM REV: X-001

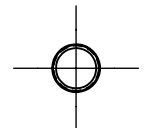
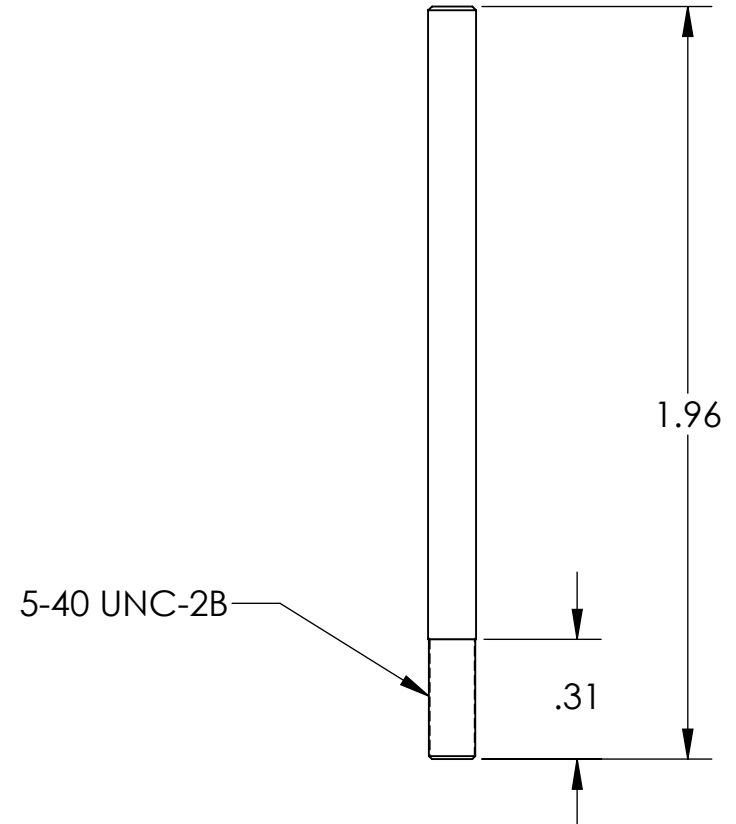
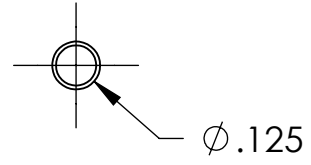
8 7 6 5 4 3 2 1

NOTES CONTINUED:
⑤ BAG ALL ITEMS INDIVIDUALLY AND MARK OR TAG EACH BAG WITH DRAWING NUMBER, REVISION, AND QUANTITY. EXAMPLE: DXXXXXX-VY, QTY: 1

REV.	DATE	DCN #	DRAWING TREE #
-	07-29-2009	E0900223-v1	-
-	-	-	-
-	-	-	-

D
C
B
A

D
C
B
A



NOTES AND TOLERANCES: (UNLESS OTHERWISE SPECIFIED)	
DIMENSIONS ARE IN INCHES	
TOLERANCES: .XX $\pm .02$.XXX $\pm .005$	
ANGULAR $\pm 1.0^\circ$	
1. INTERPRET DRAWING PER ASME Y14.5-1994. 2. REMOVE ALL SHARP EDGES, R.02 MIN. 3. DO NOT SCALE FROM DRAWING. 4. ALL MACHINING FLUIDS SHALL BE WATER SOLUBLE AND FREE OF SULFUR, CHLORINE AND SILICONE, SUCH AS CINCINNATI MILACRON'S CIMTECH 410.	
MATERIAL	FINISH
AISI 304 /303	N/A

CALIFORNIA INSTITUTE OF TECHNOLOGY MASSACHUSETTS INSTITUTE OF TECHNOLOGY		PART NAME	
ADVANCED LIGO		ADLIGO_TCS_LASER_ENCLOSURE_MIRROR_ROD	
SYSTEM	SUB-SYSTEM	DESIGNER	DATE
ADVANCED LIGO	AOS	KMAILAND	07-15-2009
NEXT ASSY	D0901417	DRAFTER	07 19 2009
		CHECKER	
		APPROVAL	

SIZE	DWG. NO.	REV.
B	D0901425	v1
SCALE: 2:1	PROJECTION:	SHEET 1 OF 1

8 7 6 5 4 3 2 1