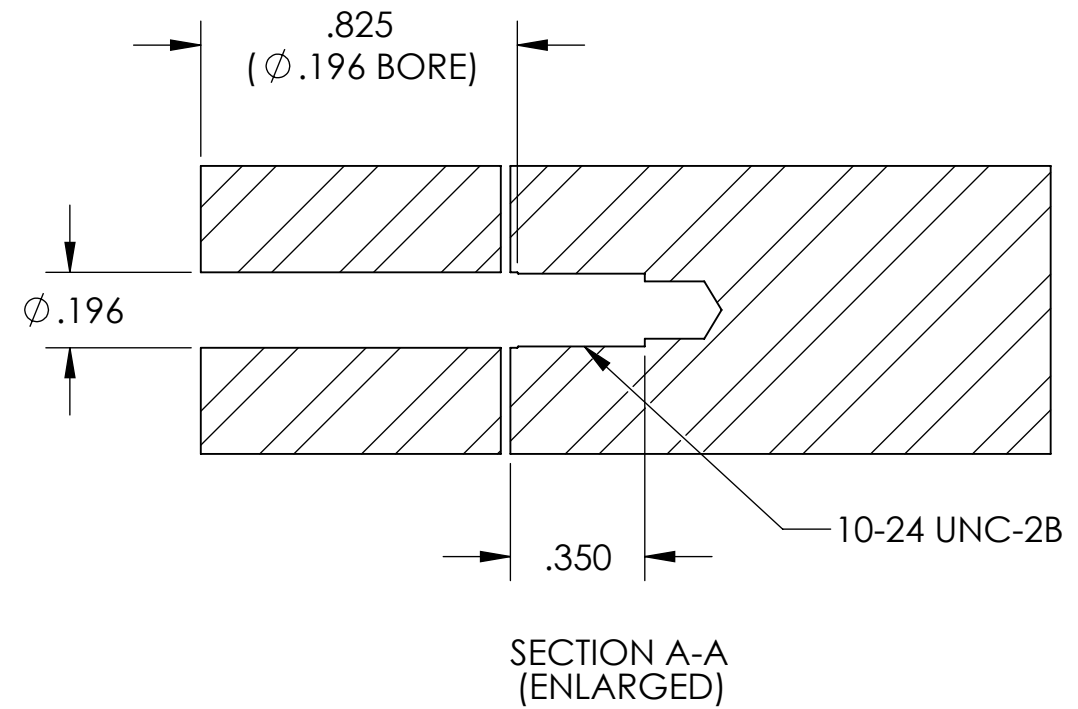
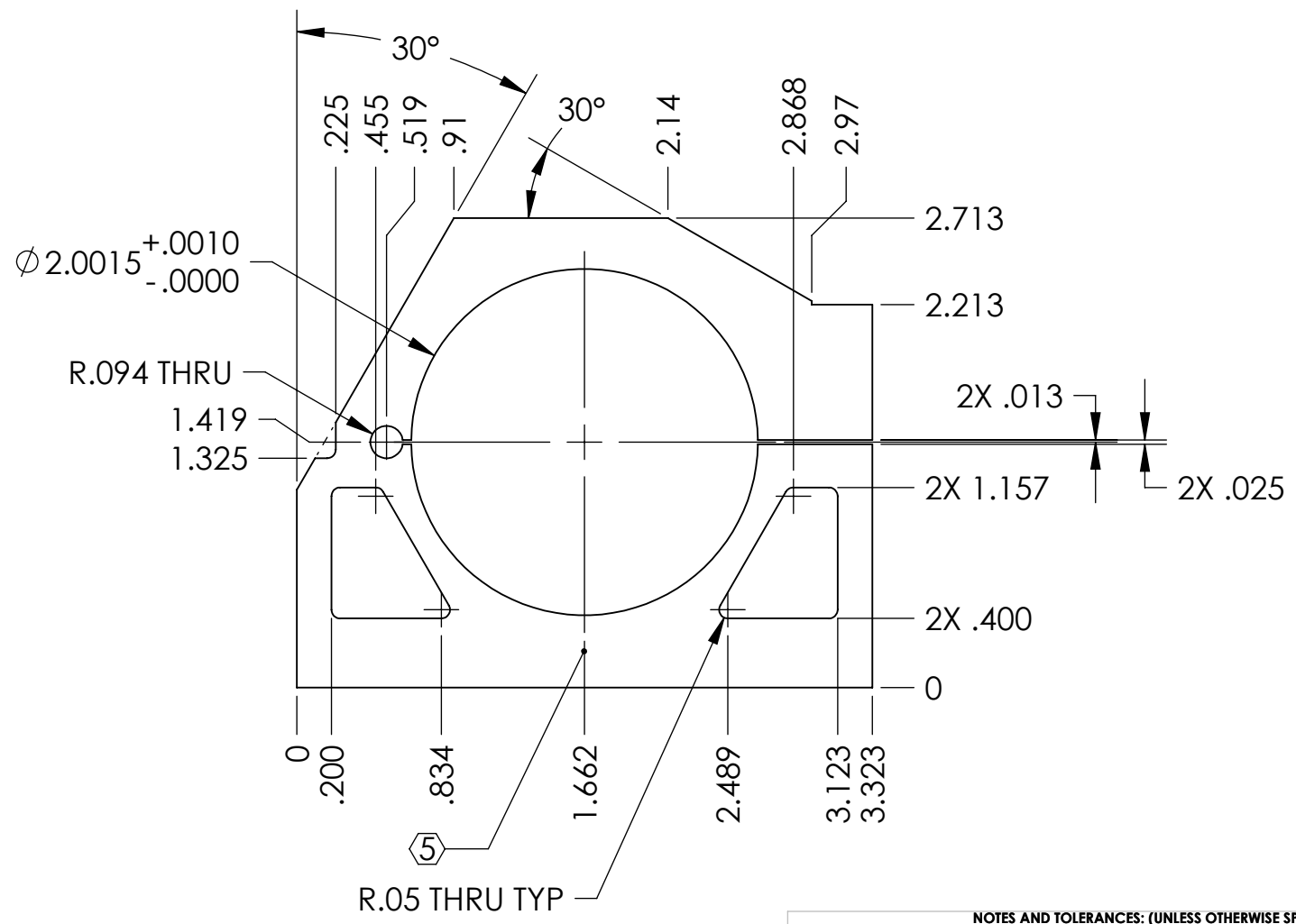
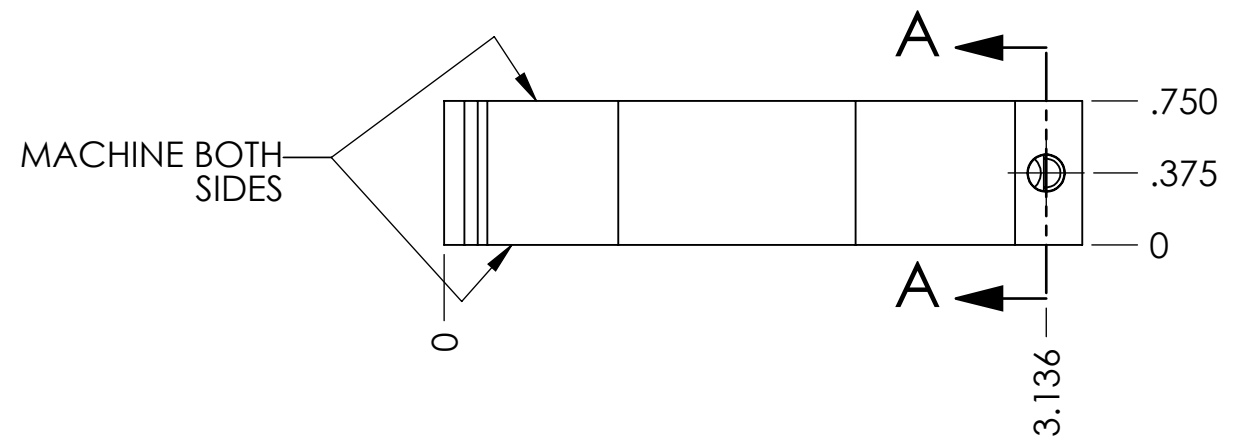
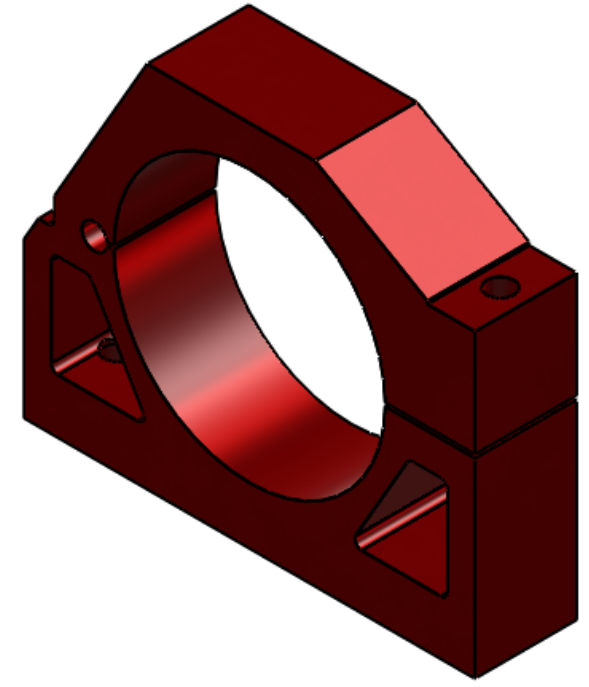


NOTES CONTINUED:  
 5 SCRIBE, ENGRAVE, OR MECHANICALLY STAMP (NO INKS OR DYES) DRAWING PART NUMBER AND REVISION ON NOTED SURFACE FOLLOWED ON THE NEXT LINE BY A THREE DIGIT SERIAL NUMBER. SERIAL NUMBERS START AT 001 FOR THE FIRST ARTICLE AND PROCEED CONSECUTIVELY. USE .07" HIGH CHARACTERS. EXAMPLE: DXXXXXX-VY, S/N 001. A VIBRATORY TOOL MAY BE USED.

REV.	DATE	DCN #	DRAWING TREE #
v1	09 JULY 2009	E0900192	E0900191
-	-	-	-
-	-	-	-



NOTES AND TOLERANCES: (UNLESS OTHERWISE SPECIFIED)				PART NAME	
DIMENSIONS ARE IN INCHES TOLERANCES: .XX ± .01 .XXX ± .005 ANGULAR ± 1.0°				<b>ADLIGO AOS OPLEV TELESCOPE CLAMP, 2" D</b>	
1. INTERPRET DRAWING PER ASME Y14.5-1994. 2. REMOVE ALL SHARP EDGES, R.02 MIN. 3. DO NOT SCALE FROM DRAWING. 4. ALL MACHINING FLUIDS SHALL BE WATER SOLUBLE AND FREE OF SULFUR, CHLORINE AND SILICONE, SUCH AS CINCINNATI MILACRON'S CIMTECH 410.				<b>ADVANCED LIGO AOS</b>	
<b>MATERIAL</b> AISI 304		<b>FINISH</b> N/A μinch		<b>NEXT ASSY</b> D0901364	
<b>DESIGNER</b> C. CONLEY		<b>DATE</b> 08 JULY 2009		<b>SIZE DWG. NO.</b> B D0901378	
<b>DRAFTER</b> C. CONLEY		<b>DATE</b> 09 JULY 2009		<b>REV.</b> v1	
<b>CHECKER</b> [ ]		<b>APPROVAL</b> [ ]		<b>SCALE</b> NONE <b>PROJECTION</b> [ ]	
				<b>SHEET 1 OF 1</b>	

D0901378 AdLIGO AOS Oplev Telescope Clamp, 2 in D, PART PDM REV: X-011, DRAWING PDM REV: X-007