

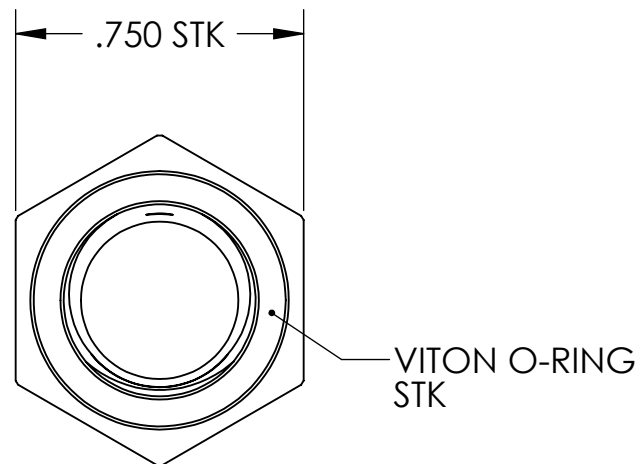
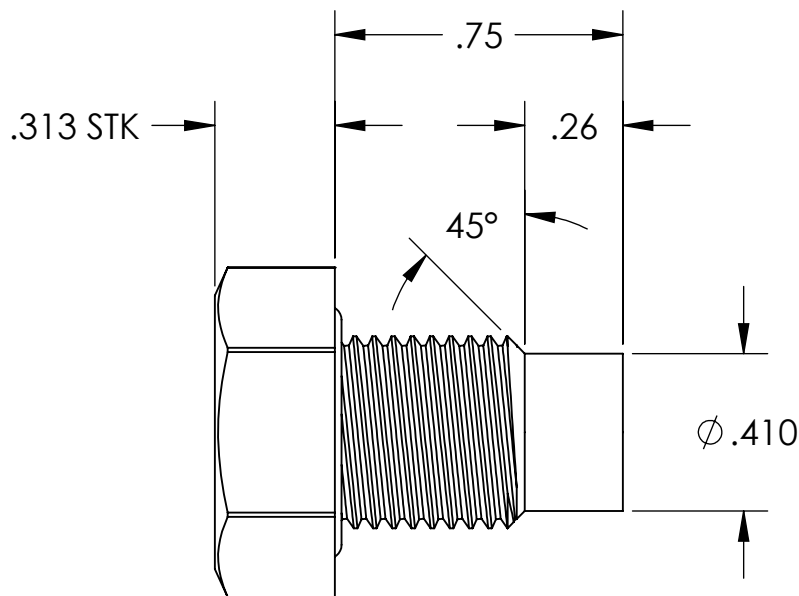
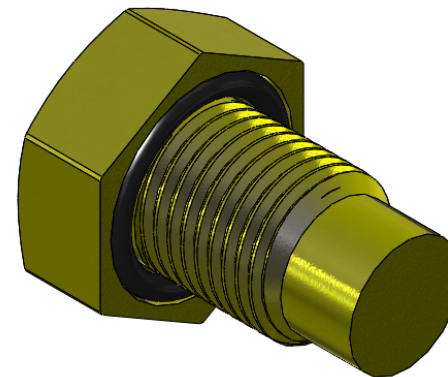
NOTES CONTINUED:

Ⓢ BAG ALL ITEMS INDIVIDUALLY AND MARK OR TAG EACH BAG WITH DRAWING NUMBER, REVISION, AND QUANTITY. EXAMPLE: DXXXXXX-VY, QTY: 1

Ⓢ MAKE FROM: SEALED HEX SCREW, 300 SERIES STAINLESS STEEL, 1/2-20, 3/4 LONG

EQUIVALENCE: APM SEELBOLT P/N ST. 5-20 X .75-5701  
www.apmselfsealingfasteners.com/ProdSearch\_details.aspx?PID=24

REV.	DATE	DCN #	DRAWING TREE #
v1	08 JULY 2009	E0900192	E0900191
-	-	-	-
-	-	-	-



NOTES AND TOLERANCES: (UNLESS OTHERWISE SPECIFIED)

DIMENSIONS ARE IN INCHES

TOLERANCES:  
.XX ± .01  
.XXX ± .005

ANGULAR ± 1.0°

1. INTERPRET DRAWING PER ASME Y14.5-1994.
2. REMOVE ALL SHARP EDGES, R.02 MIN.
3. DO NOT SCALE FROM DRAWING.
4. ALL MACHINING FLUIDS SHALL BE WATER SOLUBLE AND FREE OF SULFUR, CHLORINE AND SILICONE, SUCH AS CINCINNATI MILACRON'S CIMTECH 410.

MATERIAL



FINISH

N/A μinch



SYSTEM  
ADVANCED LIGO

SUB-SYSTEM  
AOS

NEXT ASSY

D0900912

PART NAME

ADLIGO AOS OPLEV PISTON SEALING SCREW

DESIGNER C. CONLEY 07 JULY 2009

DRAFTER C. CONLEY 08 JULY 2009

CHECKER

APPROVAL

SIZE DWG. NO.

A

D0901357

REV.

v1

SCALE: NONE

PROJECTION:



SHEET 1 OF 1