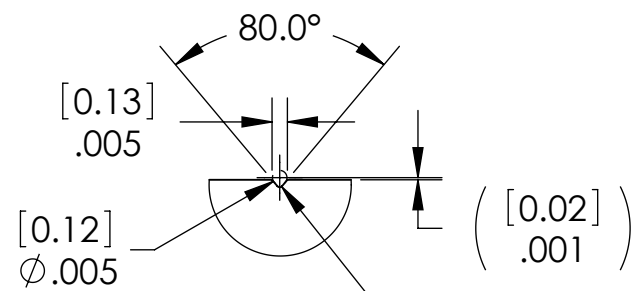
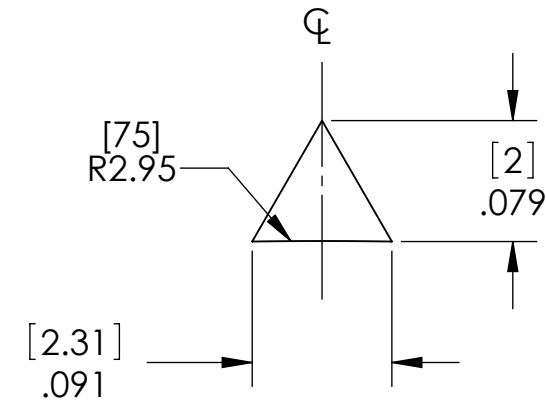
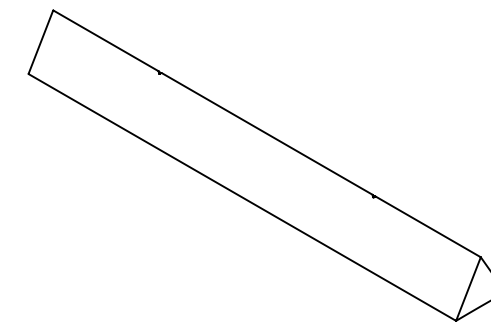
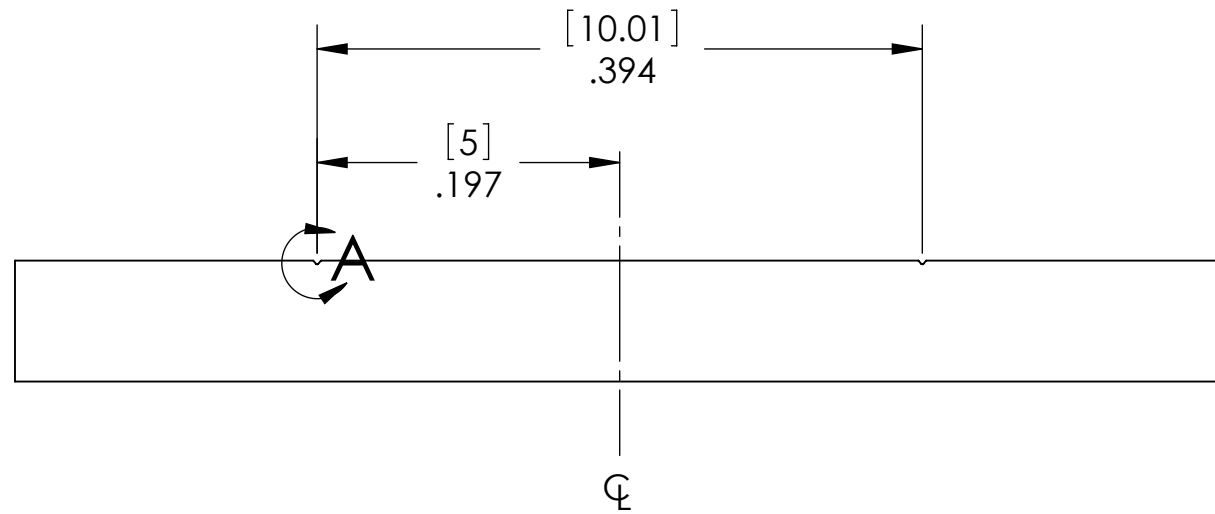


D0901278_AdvLIGO_HSTS_Secondary Metal Prism, PART PDM REV: V1, DRAWING PDM REV: V1

NOTES CONTINUED:
 ⑤ SCRIBE, ENGRAVE, OR MECHANICALLY STAMP (NO DYES OR INKS) A UNIQUE THREE DIGIT SERIAL NUMBER & REVISION NUMBER ON EACH PART. SERIAL NUMBERS START AT 101 FOR THE FIRST ARTICLE AND PROCEED CONSECUTIVELY. BAG AND TAG PARTS WITH THEIR DRAWING PART NUMBER, REVISION, VARIANT OR "TYPE" (IF APPLICABLE), AND QUANTITY. IF PARTS ARE TOO SMALL TO SCRIBE, BAGGING AND TAGGING ALONE IS SUFFICIENT.
 EXAMPLE (PART): XXX-V1
 EXAMPLE (TAG): DXXXXXX-VY, TYPE-XX, QTY: TBD

REV.	DATE	DCN #	DRAWING TREE #
v1	30 DEC 2009	E0900507	E0900353
-	-	-	-
-	-	-	-



NOTES AND TOLERANCES: (UNLESS OTHERWISE SPECIFIED)				LIGO CALIFORNIA INSTITUTE OF TECHNOLOGY MASSACHUSETTS INSTITUTE OF TECHNOLOGY		PART NAME						
DIMENSIONS ARE IN INCHES TOLERANCES: .XX ± .01 .XXX ± .005 ANGULAR ± 0.5°				1. INTERPRET DRAWING PER ASME Y14.5-1994. 2. REMOVE ALL SHARP EDGES, R.02 MIN. 3. DO NOT SCALE FROM DRAWING. 4. ALL MACHINING FLUIDS MUST BE FULLY SYNTHETIC, FULLY WATER SOLUBLE AND FREE OF SULFUR, SILICONE, AND CHLORINE.		ADVANCED LIGO		SUS		HSTS SECONDARY METAL PRISM		
MATERIAL 304, 316 OR 302 SSSL		FINISH 32 μinch		NEXT ASSY MULTIPLE		DESIGNER M. MEYER		DATE 17 JUN 2009		SIZE DWG. NO. B		
				DRAFTER B. MOORE		DATE 13 JAN 2010		CHECKER M. MEYER		DATE 14 JAN 2010		
				APPROVAL				SCALE: 8:1		PROJECTION:		
										D0901278		REV. v1
										SHEET 1 OF 1		