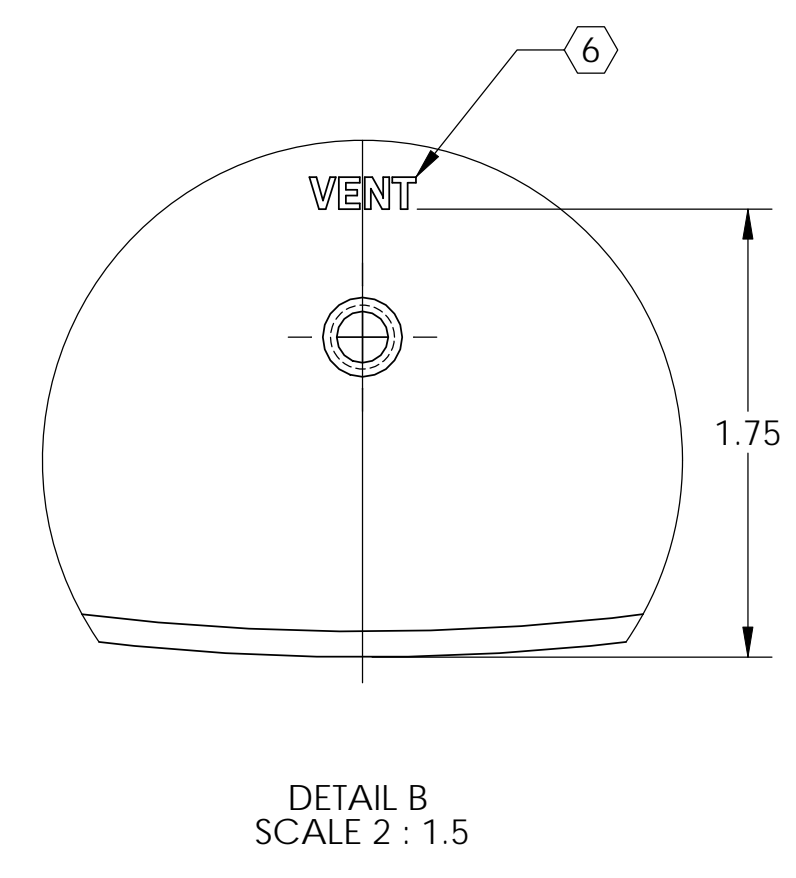
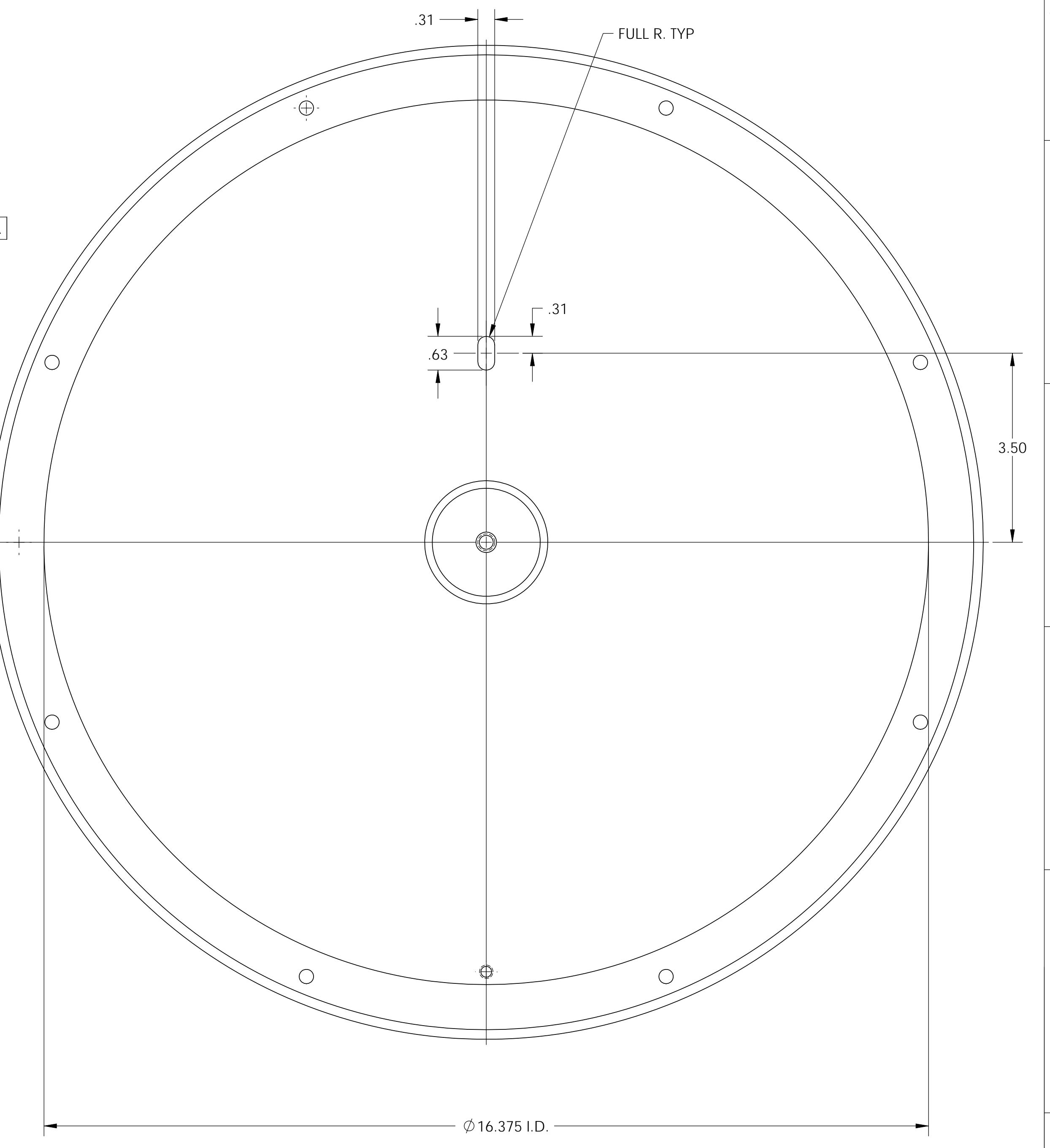
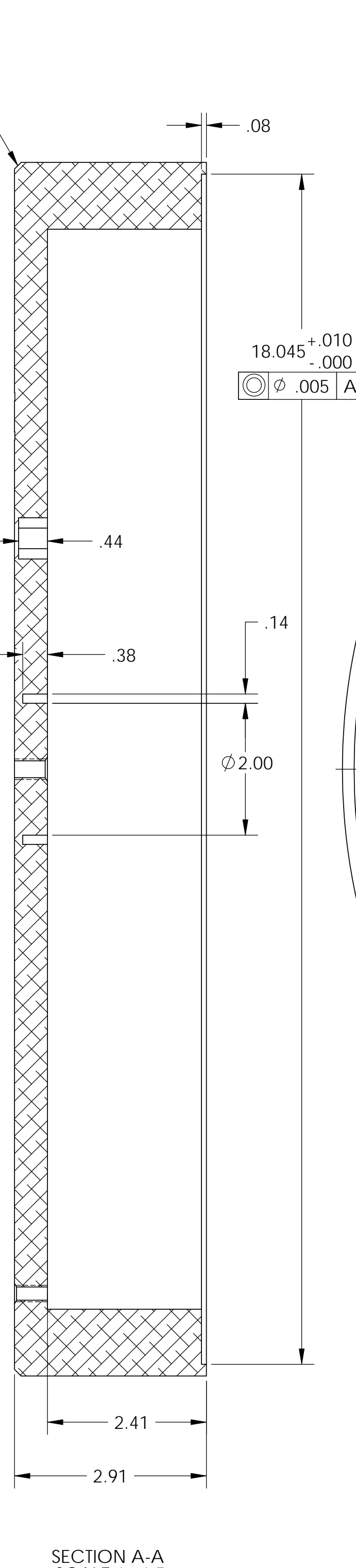
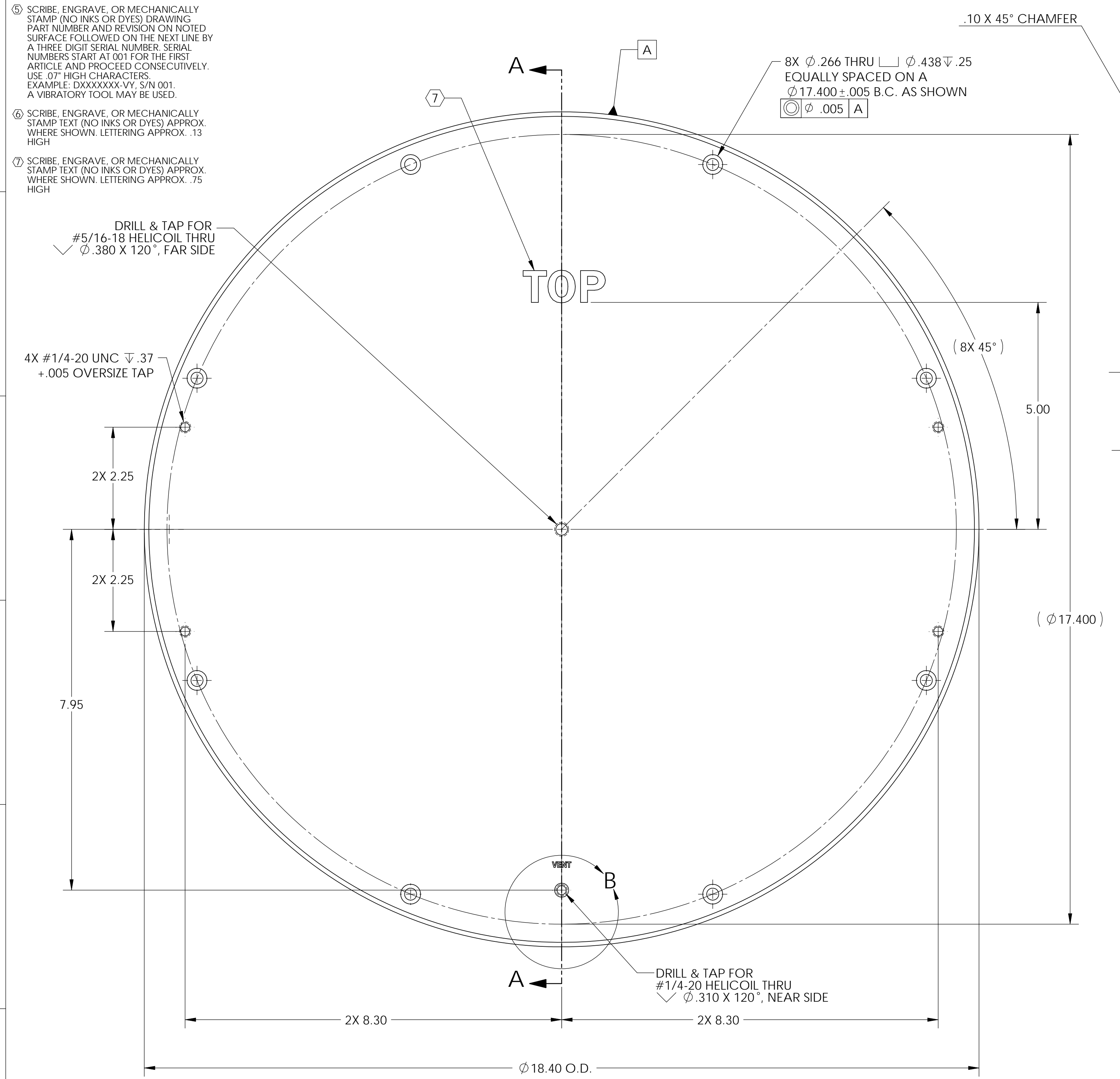


NOTES CONTINUED:
 ⑤ SCRIBE, ENGRAVE, OR MECHANICALLY STAMP (NO INKS OR DYES) DRAWING PART NUMBER AND REVISION ON NOTED SURFACE FOLLOWED ON THE NEXT LINE BY A THREE DIGIT SERIAL NUMBER. SERIAL NUMBERS START AT 001 FOR THE FIRST ARTICLE AND PROCEED CONSECUTIVELY. USE .07" HIGH CHARACTERS. EXAMPLE: DXXXXXX-VY, S/N 001. A VIBRATORY TOOL MAY BE USED.
 ⑥ SCRIBE, ENGRAVE, OR MECHANICALLY STAMP TEXT (NO INKS OR DYES) APPROX. WHERE SHOWN. LETTERING APPROX. .13 HIGH
 ⑦ SCRIBE, ENGRAVE, OR MECHANICALLY STAMP TEXT (NO INKS OR DYES) APPROX. WHERE SHOWN. LETTERING APPROX. .75 HIGH

REV.	DATE	DCN #	DRAWING TREE #
-	-	REFER TO E0900200-v1	-
-	-	-	-
-	-	-	-



NOTES AND TOLERANCES: (UNLESS OTHERWISE SPECIFIED)

- INTERPRET DRAWING PER ASME Y14.5-1994.
- REMOVE ALL SHARP EDGES, R 02 MIN.
- DO NOT SCALE FROM DRAWING.
- ALL MACHINING FLUIDS SHALL BE WATER SOLUBLE AND FREE OF SULFUR, CHLORINE AND SILICONE, SUCH AS CINCINNATI MILACRON'S CIMTECH 410.

DIMENSIONS ARE IN INCHES

TOLERANCES:
 .XX ± 0.01
 .XXX ± 0.005

ANGULAR ± 0.5°

MATERIAL	6061-T6 Alum	FINISH	32 μinch
----------	--------------	--------	----------

CALIFORNIA INSTITUTE OF TECHNOLOGY MASSACHUSETTS INSTITUTE OF TECHNOLOGY		PART NAME	
SYSTEM: ADVANCED LIGO SUB-SYSTEM: COC		Cover, Top, FM Optic Container	
DESIGNER	ED CHAVEZ	16 JUN 2009	SIZE DWG. NO.
DRAFTER	ED CHAVEZ	14 JUL 2009	D
CHECKER	REFER TO E0900200-v1		D0901266
APPROVAL	REFER TO E0900200-v1		v1
NEXT ASSY		SCALE: 1:2	PROJECTION:
FM Optic Container			SHEET 1 OF 1

D0901266-Cover_Top - Alum Box - Rev 01 - PART PDM REV. X.DWG. DRAWING PDM REV. X.001