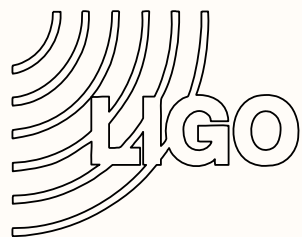
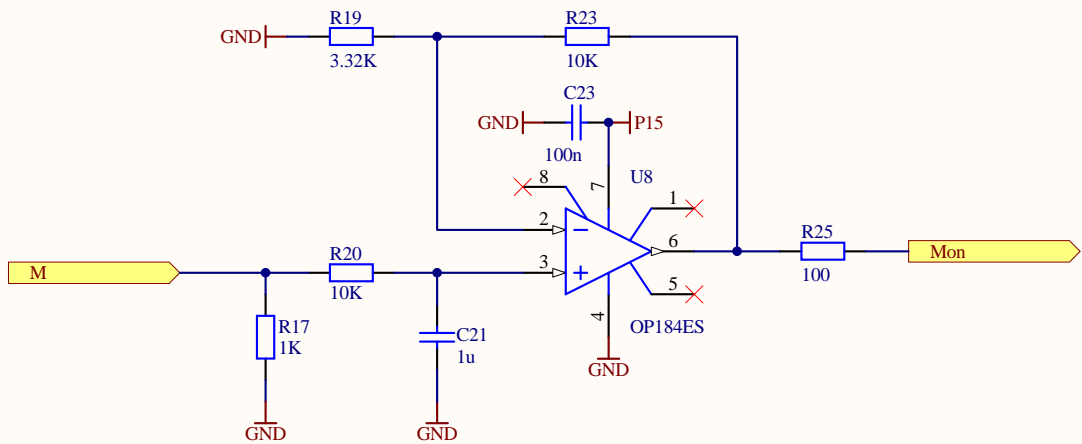


To make the BNC outputs slow monitors:
Move R6, R8 and R10 to R5, R7 and R9, respectively.

The fast monitors have 4x less gain than the slow ones.

Title		
RF Distribution Amplifier: Monitor		
Size	Number	Revision
B	D080714	A
Date:	1/27/2009	Sheet 1 of 2
File:	C:\User\...\RF Amplifier Monitor 1.SchDoc	Drawn By: Daniel Sigg

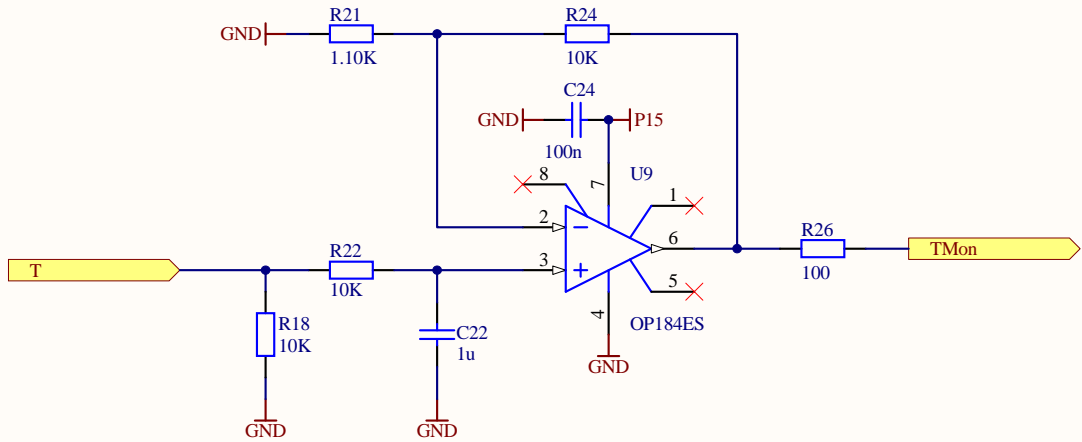




30 dBm	2.3V
20 dBm	3.2V
10 dBm	4.2V
0 dBm	5.2V
-10 dBm	6.2V
-20 dBm	7.2V
-30 dBm	8.0V

nominal slope: -100mV/dBm

$$P = 12 \text{ dBm} - 10 \text{ dBm/V} * (U - 4V)$$



$$T = 20^{\circ}\text{C} + 50^{\circ}\text{C/V} * (U - 6V)$$

Title **RF Distribution Amplifier: Monitor**

Size B	Number D080714	Revision A
-----------	--------------------------	----------------------

Date:	1/27/2009	Sheet 2 of 2
File:	C:\User\...\RFAmplifierMonitor2.SchDoc	Drawn By: Daniel Sigg