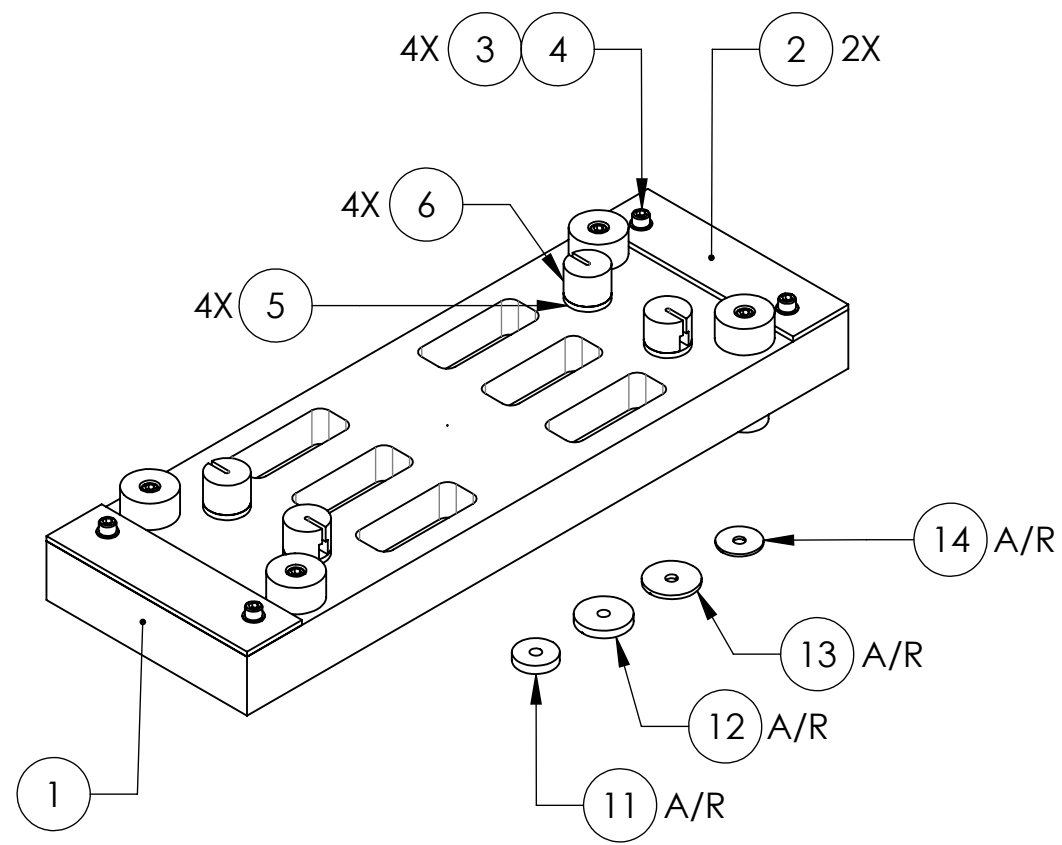


D070035\_ADVANCED LIGO SUS OMC METAL OMC BENCH ASSEMBLY, PART PDM REV: V1-005, DRAWING PDM REV:

REV.	DATE	DCN #	DRAWING TREE #
A	09 FEB 2007	E070025	-
B	20 JUL 2007	E070186	-
C	18 MAR 2008	E080111	-
v2	15 NOV 2012	E1201018	E0900061
v3	28 JAN 2013	E1201018	E0900061
v4	28 JAN 2013	E1300085	E0900061



14	D1100894	ADD-ON MASS, 2g	6061-T6 Al	A/R	0	0
13	D1100863	ADD-ON MASS, 5g	6061-T6 Al	A/R	0	0
12	D1100855	ADD-ON MASS, 10g	6061-T6 Al	A/R	0	0
11	D030078	ADD-ON MASS, 20g	304, 316 OR 302 SSSL	A/R	0	0
10	D020351	ADD-ON MASS, 50g	304, 316 OR 302 SSSL	2	0	2
9	D020350	ADD-ON MASS, 100g	304, 316 OR 302 SSSL	4	0	4
8	-	SCREW, SOCKET HEAD CAP, 1/4-20 UNC-2A X 0.75 LONG	300 SSSL	6	2	12
7	-	SCREW, FLAT HEAD CAP, #4-40 X 0.375 LONG	300 SSSL	12	3	15
6	D1201334	OMC BRACKET, METAL MOUNTING	6061-T6 Al	4	0	4
5	D1201335	OMC ADAPTER, METAL BREADBOARD	6061-T6 Al	4	0	4
4	-	SCREW, SOCKET HEAD CAP, 1/4-20 UNC-2A X 0.625 LONG	300 SSSL	8	2	10
3	-	WASHER, FLAT, 1/4 (NAS 620-C416L OR EQUIVALENT)	300 SSSL	12	3	15
2	D1201469	OMC SHIM, METAL BREADBOARD	6061-T6 Al	2	0	2
1	D070027	METAL DUMMY OPTICAL BENCH	6061-T6 Al	1	0	1
ITEM NO.	PART NUMBER	DESCRIPTION	MATERIAL	REQ	SPARE	TOTAL

PARTS LIST

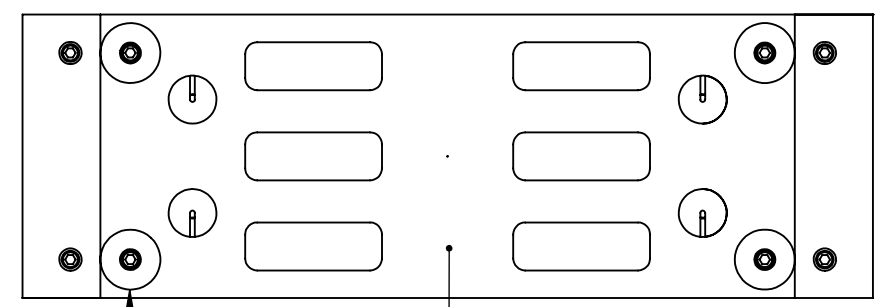
<p><b>NOTES AND TOLERANCES: (UNLESS OTHERWISE SPECIFIED)</b></p> <p>1. INTERPRET DRAWING PER ASME Y14.5-1994.                  2. DO NOT SCALE FROM DRAWING.                  3. TARGET MASS (INCLUDING LOWER WIRE CLAMPS): 7.000 kg.</p>				<p><b>LIGO</b> CALIFORNIA INSTITUTE OF TECHNOLOGY                  MASSACHUSETTS INSTITUTE OF TECHNOLOGY</p>				<p>PART NAME  <b>METAL BENCH ASSEMBLY</b></p>			
<p>DIMENSIONS ARE IN INCHES [MM]</p> <p>TOLERANCES:                  .XX ± .01                  .XXX ± .005                  ANGULAR ± 0.5°</p>				<p>SYSTEM  <b>ADVANCED LIGO</b></p>				<p>SUB-SYSTEM  <b>SUS</b></p>			
<p>MATERIAL                  --</p>				<p>FINISH                  -- μinch</p>				<p>DESIGNER                  D. BRIDGES</p>			
<p>NEXT ASSY                  SUSPENDED MASS ASSEMBLY, OMC</p>				<p>DRAFTER                  D. BRIDGES</p>				<p>CHECKER                  B. MOORE</p>			
<p>DATE                  05 FEB 2013</p>				<p>DATE                  11 FEB 2013</p>				<p>DATE                  11 FEB 2013</p>			
<p>SCALE: 1:4</p>				<p>PROJECTION:</p>				<p>SIZE DWG. NO.  <b>D070035</b></p>			
<p>SHEET 1 OF 2</p>				<p>REV.  <b>v4</b></p>				<p>SHEET 1 OF 2</p>			

D070035\_ADVANCED LIGO SIUS OMC METAL OMC BENCH ASSEMBLY, PART PDM REV: V1-005, DRAWING PDM REV:

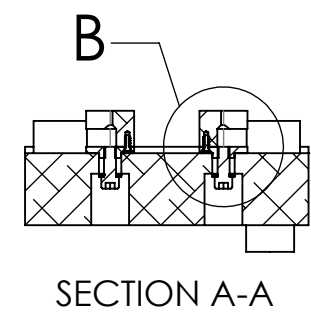
8 7 6 5 4 3 2 1

D  
C  
B  
A

D  
C  
B  
A

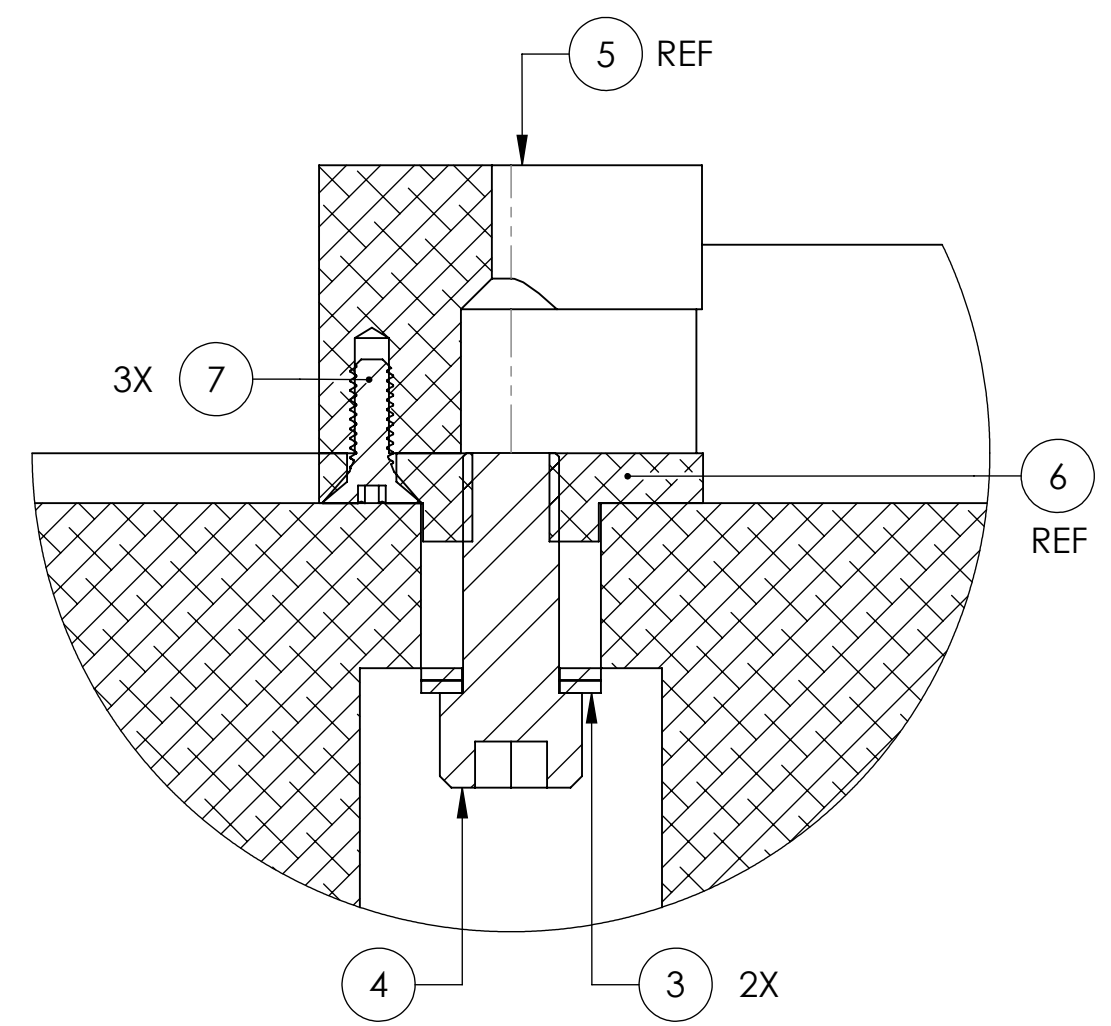
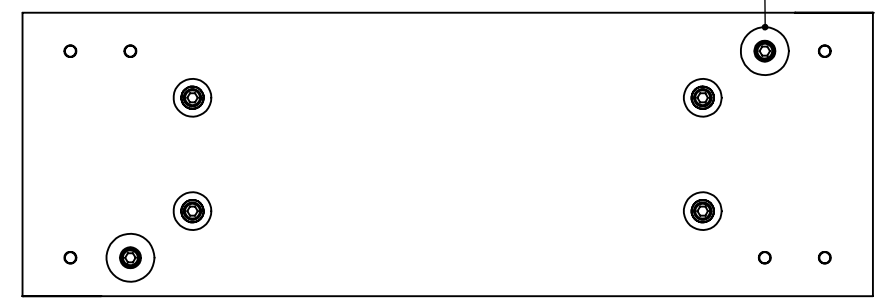


1 REF  
8 9  
4X 4X



SECTION A-A

2X 2X  
8 10



DETAIL B  
SCALE 2 : 1  
TYPICAL

**LIGO** CALIFORNIA INSTITUTE OF TECHNOLOGY  
MASSACHUSETTS INSTITUTE OF TECHNOLOGY

SIZE	DWG. NO.	REV.
B	D070035	v4
SCALE: 1:4	PROJECTION:	SHEET 2 OF 2

8 7 6 5 4 3 2 1