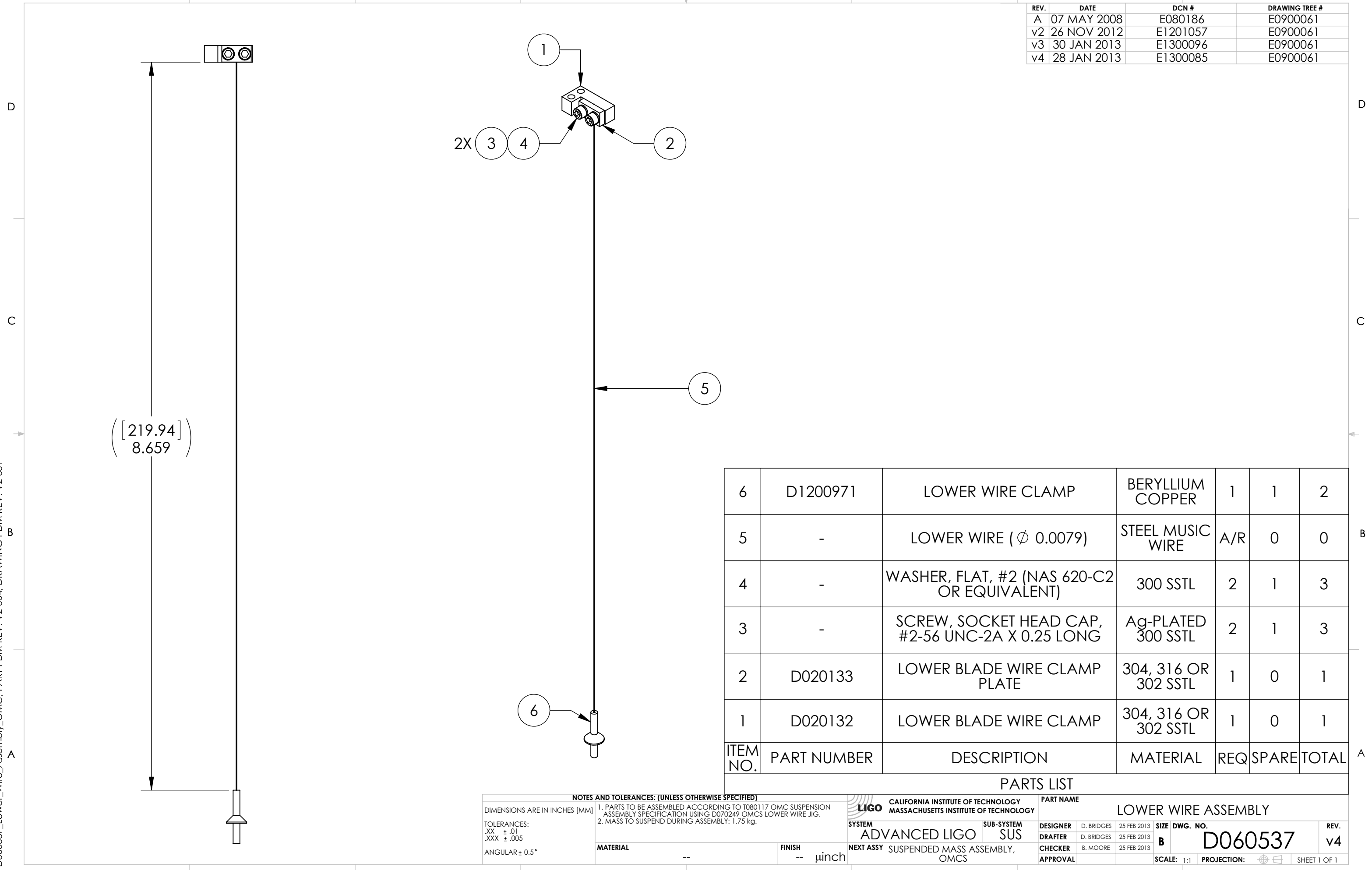


D060537_Lower_Wire_Assembly_OMC, PART PDM REV: V2-004, DRAWING PDM REV: V2-001

REV.	DATE	DCN #	DRAWING TREE #
A	07 MAY 2008	E080186	E0900061
v2	26 NOV 2012	E1201057	E0900061
v3	30 JAN 2013	E1300096	E0900061
v4	28 JAN 2013	E1300085	E0900061



ITEM NO.	PART NUMBER	DESCRIPTION	MATERIAL	REQ	SPARE	TOTAL
6	D1200971	LOWER WIRE CLAMP	BERYLLIUM COPPER	1	1	2
5	-	LOWER WIRE (ϕ 0.0079)	STEEL MUSIC WIRE	A/R	0	0
4	-	WASHER, FLAT, #2 (NAS 620-C2 OR EQUIVALENT)	300 SSSL	2	1	3
3	-	SCREW, SOCKET HEAD CAP, #2-56 UNC-2A X 0.25 LONG	Ag-PLATED 300 SSSL	2	1	3
2	D020133	LOWER BLADE WIRE CLAMP PLATE	304, 316 OR 302 SSSL	1	0	1
1	D020132	LOWER BLADE WIRE CLAMP	304, 316 OR 302 SSSL	1	0	1

PARTS LIST

NOTES AND TOLERANCES: (UNLESS OTHERWISE SPECIFIED)

DIMENSIONS ARE IN INCHES [MM]

TOLERANCES:
 .XX ± .01
 .XXX ± .005
 ANGULAR ± 0.5°

1. PARTS TO BE ASSEMBLED ACCORDING TO T080117 OMC SUSPENSION ASSEMBLY SPECIFICATION USING D070249 OMC'S LOWER WIRE JIG.
 2. MASS TO SUSPEND DURING ASSEMBLY: 1.75 kg.

MATERIAL		--	FINISH		--	μinch	
----------	--	----	--------	--	----	-------	--

LIGO CALIFORNIA INSTITUTE OF TECHNOLOGY
 MASSACHUSETTS INSTITUTE OF TECHNOLOGY

SYSTEM: **ADVANCED LIGO** SUB-SYSTEM: **SUS**

NEXT ASSY: **SUSPENDED MASS ASSEMBLY, OMC'S**

PART NAME			LOWER WIRE ASSEMBLY		
DESIGNER	D. BRIDGES	25 FEB 2013	SIZE	DWG. NO.	
DRAFTER	D. BRIDGES	25 FEB 2013	B	D060537	
CHECKER	B. MOORE	25 FEB 2013	SCALE	1:1	PROJECTION:
APPROVAL					SHEET 1 OF 1

REV. **v4**