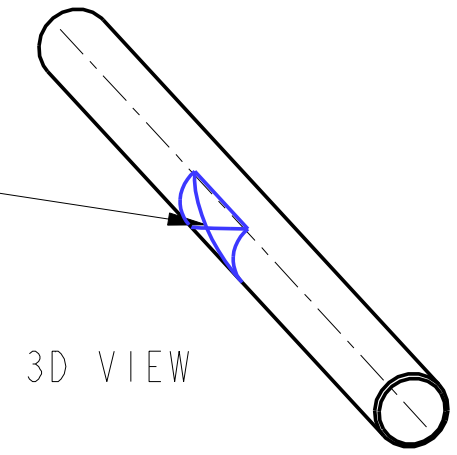
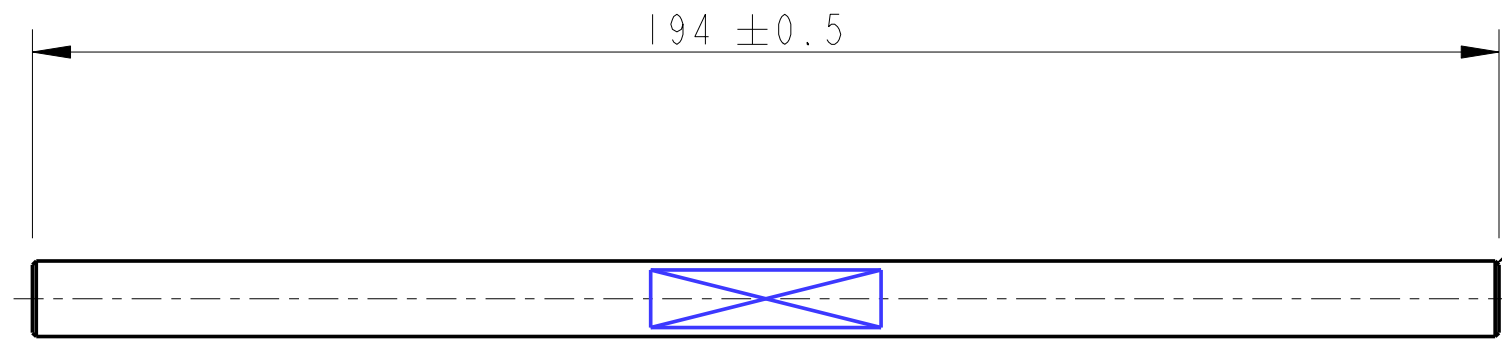


REV.	DATE	DCN #	DRAWING TREE #
A	17/OCT/06	E060242	

PART NO. SEE NOTE 4



3D VIEW





194 ± 0.5

CHAMFER 0.5 X 45° TYP

Ø 10 h6 STOCK

NOTE:

USE ST STEEL STOCK BAR (h6)  
ST STEEL GRADE 303/304

NOTES: (UNLESS OTHERWISE SPECIFIED)			 CALIFORNIA INSTITUTE OF TECHNOLOGY MASSACHUSETTS INSTITUTE OF TECHNOLOGY IGR, GLASGOW UNIVERSITY GEO 600 GROUP RUTHERFORD APPLETON LABORATORIES	
1. REMOVE ALL SHARP EDGES, R.02 MIN. 2. DO NOT SCALE FROM DRAWING. 3. ALL MACHINING FLUIDS SHALL BE WATER SOLUBLE AND FREE OF SULFUR, CHLORINE AND SILICONE, SUCH AS CINCINNATI MILACRON'S CIMTECH 410 (STAINLESS STEEL) 4. SCRIBE, ENGRAVE OR STAMP DRAWING PARTNUMBER ON NOTED SURFACE OF PART AND A THREE DIGIT SERIAL NUMBER. SERIAL NUMBERS START AT 001 FOR THE FIRST PART AND PROCEED CONSECUTIVELY. USE .07" HIGH CHARACTERS. EXAMPLE: D020188- 001. A VIBRATORY TOOL MAY BE USED.	DIMENSIONS ARE IN mm [INCHES]		SYSTEM <b>ADVANCED LIGO</b>	
	TOLERANCES: X.XX ±0.2 mm ANGULAR ±0.25 °		SUB-SYSTEM <b>SUS</b>	
	MATERIAL: ST STEEL SEE NOTE		NEXT ASSY <b>QUAD INPTYPE TOP STAGE; TOP STAGE BLADE TOOLING</b>	
	FINISH: CLEAN AND DE-GREASE √μm [μin] Ra = STOCK		PART NAME <b>STAIGHTNING ROLLER AXEL (FOR TOP STAGE BLADE TOOLING)</b>	
	NAME	DATE	STZE	REV
DRAWN	J WILMUT	19/Sep/06	<b>B</b>	<b>B.</b>
CHECKED	J'OD	17/OCT/06		
APPROVED	RJG	17/OCT/06		
SCALE 1:1			PROJECTION: 	SHEET 1 OF 1