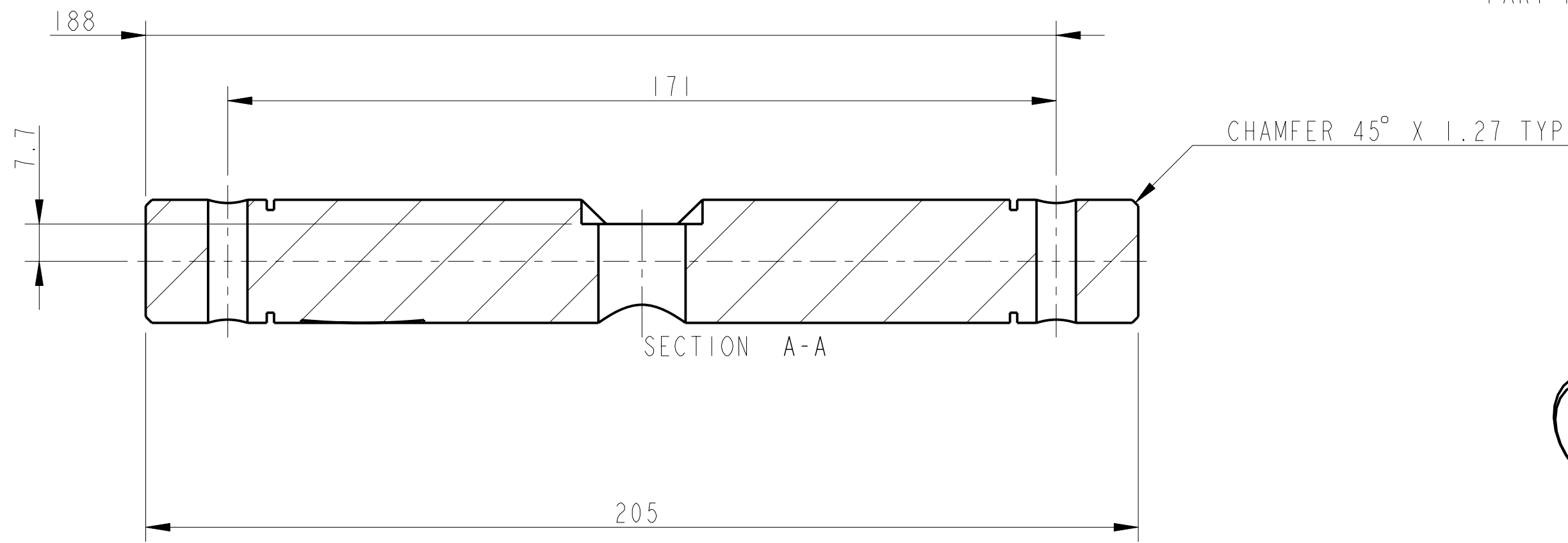
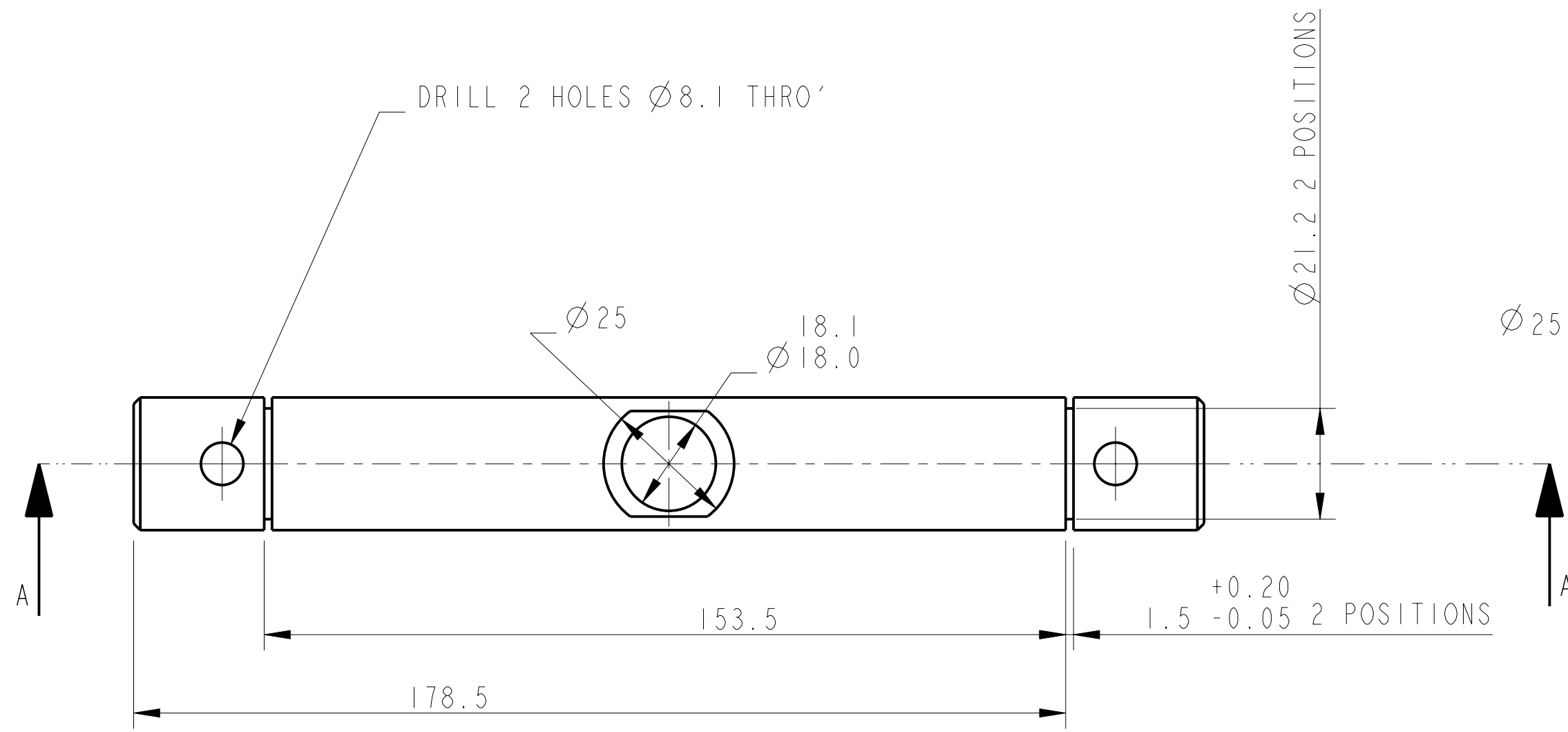


REV.	DATE	DCN #	DRAWING TREE #
A	17/OCT/06	E060242	



NOTES: (UNLESS OTHERWISE SPECIFIED)

- REMOVE ALL SHARP EDGES, R.02 MIN.
- DO NOT SCALE FROM DRAWING.
- ALL MACHINING FLUIDS SHALL BE WATER SOLUBLE AND FREE OF SULFUR, CHLORINE AND SILICONE, SUCH AS CINCINNATI MILACRON'S CIMTECH 410 (STAINLESS STEEL).
- SCRIBE, ENGRAVE OR STAMP DRAWING PART NUMBER ON NOTED SURFACE OF PART AND A THREE DIGIT SERIAL NUMBER. SERIAL NUMBERS START AT 001 FOR THE FIRST PART AND PROCEED CONSECUTIVELY. USE .07" HIGH CHARACTERS. EXAMPLE: D020188-001. A VIBRATORY TOOL MAY BE USED.

DIMENSIONS ARE IN mm (INCHES) TOLERANCES:

X.XX ± 0.2 mm (INCHES)
ANGULAR $\pm 0.25^\circ$

MATERIAL: ST STEEL
303/304

FINISH: CLEAN AND DEGREASED
 $\varphi \mu m$ (μin) Ra = 63 [1.6]

NAME	DATE
DRAWN I WILMUT	19/SEP/06
CHECKED J'OD	17/OCT/06
APPROVED RJG	17/OCT/06

CALIFORNIA INSTITUTE OF TECHNOLOGY
MASSACHUSETTS INSTITUTE OF TECHNOLOGY
IGR, GLASGOW UNIVERSITY GEO 600 GROUP
RUTHERFORD APPLETON LABORATORIES

SYSTEM **ADVANCED LIGO**

SUB-SYSTEM **SUS**

NEXT ASSY **QUAD NPTYPE TOP STAGE; TOP STAGE BLADE TOOLING**

PART NAME **STRAIGHTENING CARRIAGE GUIDE**
(FOR TOP STAGE BLADE TOOLING)

DRG. NO. **D060362**

SCALE 1:1 PROJECTION