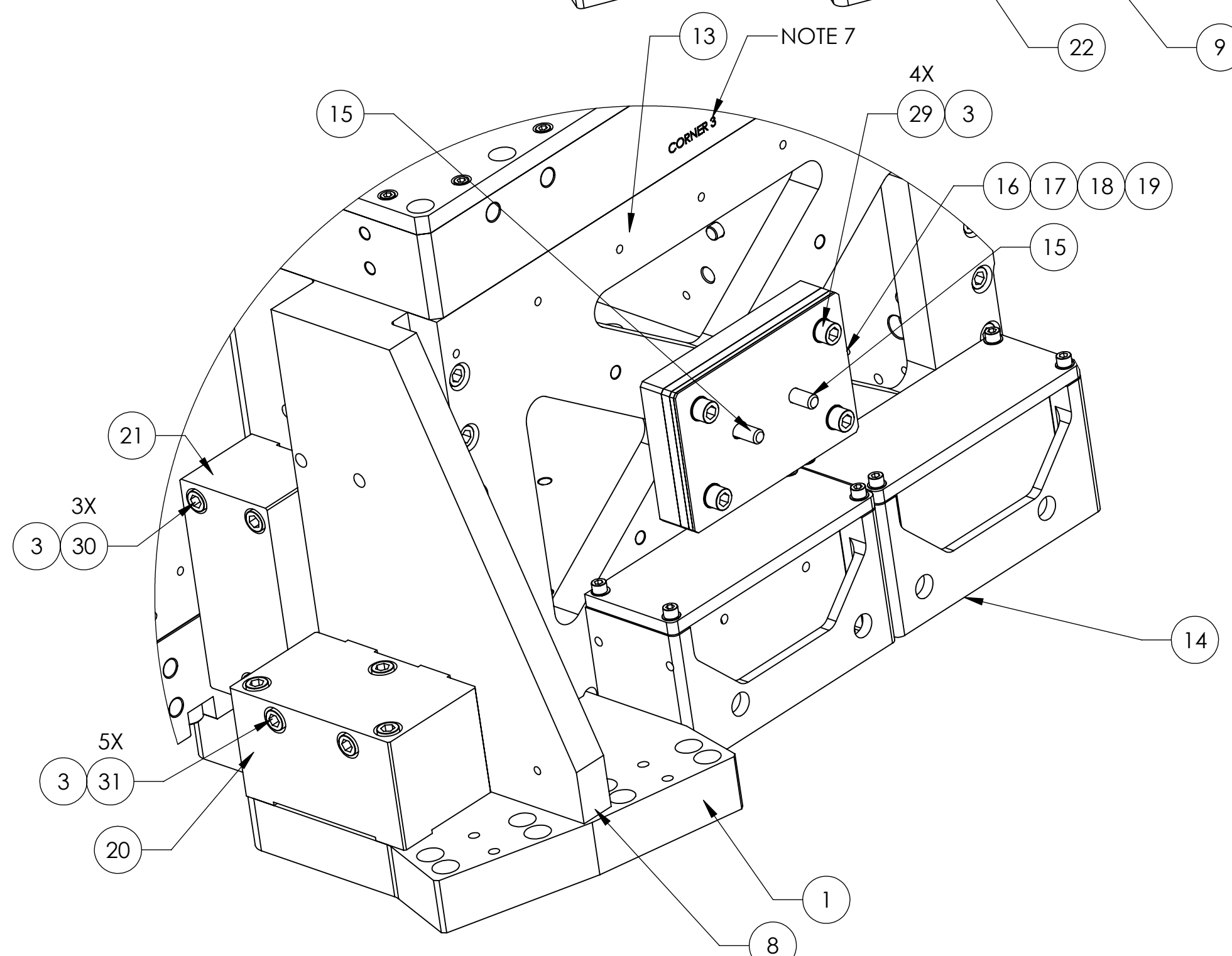
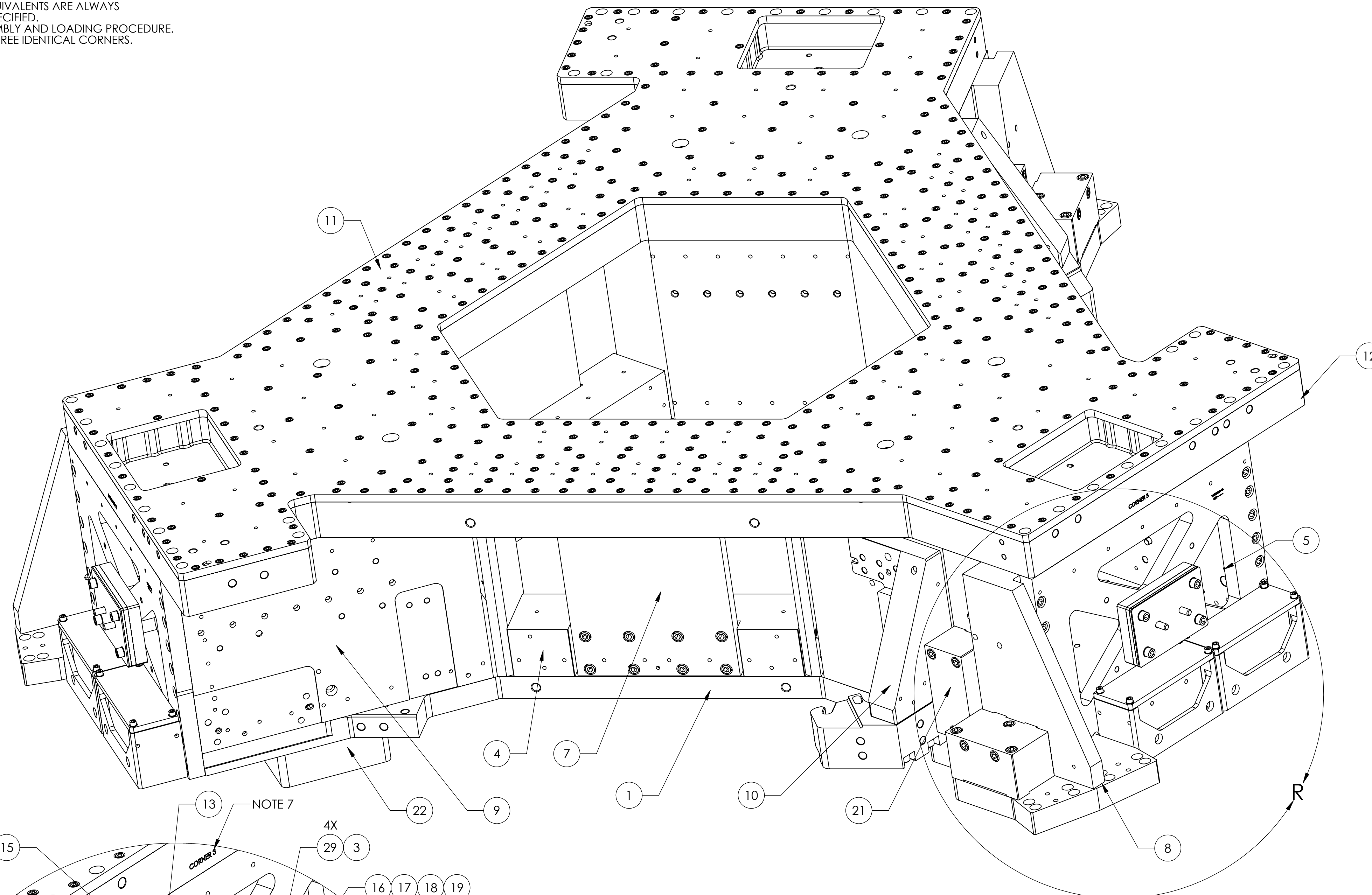


NOTES CONTINUED:

- 5. VENDOR REFERENCES ARE PROVIDED AS EXAMPLES OF PARTS MEETING ALL REQUIRED SPECIFICATIONS. EQUIVALENTS ARE ALWAYS ACCEPTABLE UNLESS OTHERWISE SPECIFIED.
- 6. REFER TO LIGO E0900357 FOR ASSEMBLY AND LOADING PROCEDURE.
- 7. NOTE CORNER ID, ASSEMBLY HAS THREE IDENTICAL CORNERS.
- 8. SEE SHEET FOR LAYOUT OF WALLS.

REV.	DATE	DCN #	DRAWING TREE #
v1	11 Jan 2011	E1100026	E1000025
v2	12 Apr. 2011	E1000422	E1000025
v3	28 Aug. 2012	E1200786	



ITEM NO.	PART NUMBER	DESCRIPTION	MATERIAL	REQ
31	MSC_5682406	SHCS 3/8-16 x 3.75 lg. 1 1/4 to 3" thd	18-8 SSSL	15
30	MCMaster_92196A636	SHCS, 3/8"-16x3.0"	18-8 SS	20
29	HOLOKROME_78106	SHCS 3/8-16x2"	18-8 SS	12
28	UC_COMPONENTS_WFV-25	Vented Washer, .255 ID X .468 OD X .032 THK #1/4	18-8 SSSL	405
27	HOLOKROME_78058	SCREW SHCS, 1/4-20 X 3/4 LG.	18-8 SS	405
26	MCMaster_90145A620	Dowel Pin, .375 od x .625 lg	18-8 SS	12
25	HOLOKROME_78102	SHCS, 3/8"-16x1.5"	18-8 SS	120
24	D0902443	BACK RIBS, STAGE 1, aLIGO BSC ISI	6061-T6 Al	3
23	D0902441	SIDE RIBS, STAGE 1, aLIGO BSC ISI	6061-T6 Al	6
22	D0902280	BALLAST, STAGE 1, aLIGO BSC-ISI	6061-T6 Al	3
21	D0902612	LATERAL TRIM MASS 12 LBS, STAGE 1, aLIGO BSC-ISI	AlSI 304	3
20	D0902613	LATERAL TRIM MASS 15 LBS, STAGE 1, aLIGO BSC ISI	AlSI 304	3
19	D0902616-4	Small Trim Masses, Stage 1, aLIGO BSC-ISI	AlSI 304	3
18	D0902616-3	Small Trim Masses, Stage 1, aLIGO BSC-ISI	AlSI 304	3
17	D0902616-2	Small Trim Masses, Stage 1, aLIGO BSC-ISI	AlSI 304	3
16	D0902616-5	Small Trim Masses, Stage 1, aLIGO BSC-ISI	AlSI 304	3
15	McMaster_90145A633	Dowel Pin .375 od x 2.50 lg	18-8 SS	6
14	D1001760	Stage 1 Vibration Absorber (door)	N/A	3
13	D0902281	Door, Stage 1, aLIGO BSC ISI	6061-T6 Al	3
12	D0902273	Close Out Plate, Stage 1 aLIGO BSC-ISI	6061-T6 Al	1
11	D0902503	BSC-ISI, Stage 1, Close Out Plate Cover	6061-T6 Al	1
10	D0902425	FLEXURE ROD BRACKET ASSY, STAGE 1, aLIGO BSC ISI	N/A	3
9	D0902278	L4C WALL, STAGE 1, aLIGO BSC ISI	6061-T6 Al	3
8	D0902274	FLEXURE WALL, STAGE 1, aLIGO BSC ISI	6061-T6 Al	3
7	D0902282	HEX INNER WALL, STAGE 1, aLIGO BSC ISI	6061-T6 Al	3
6	D0902271	ANGLED HEX WALL, STAGE 1, aLIGO BSC ISI	6061-T6 Al	3
5	MCMaster_90145A624	Pin 3/8" (.3751) x 1.0 L	18-8 SS	51
4	D0902272	BLOCKS LINK, STAGE 1, aLIGO BSC ISI	6061-T6 Al	3
3	UC_COMPONENTS_WFV-38	Washer Vented, .39 ID X .63 OD X .032 THK #3/8"	18-8 SS	560
2	HOLOKROME_78100	SHCS, 3/8"-16x1.25"	18-8 SS	393
1	D0902279	Base Plate, Stage 1, aLIGO BSC-ISI	6061-T6 Al	1

DETAIL R
SCALE 1 : 3
TYP. 3 CORNERS

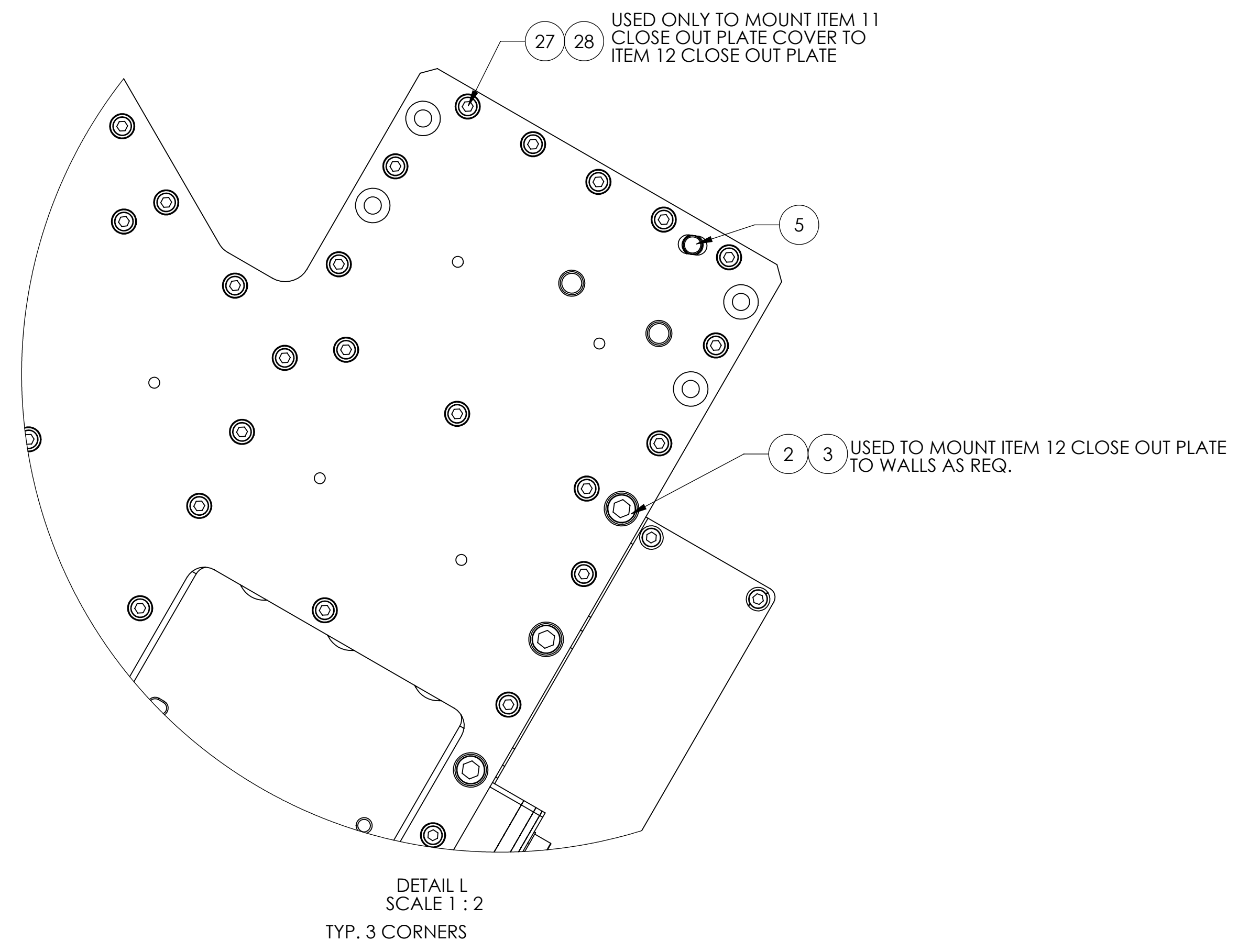
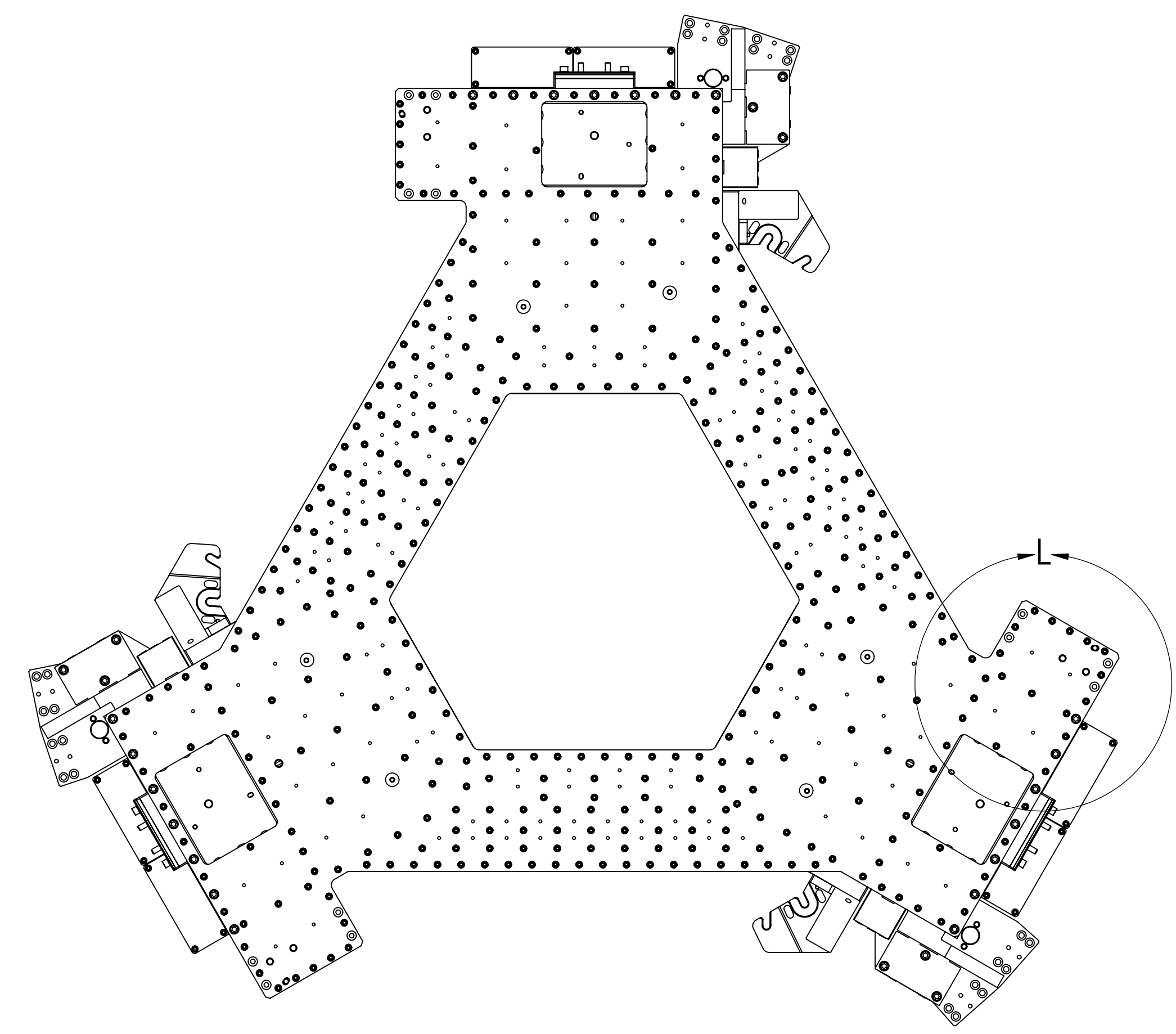
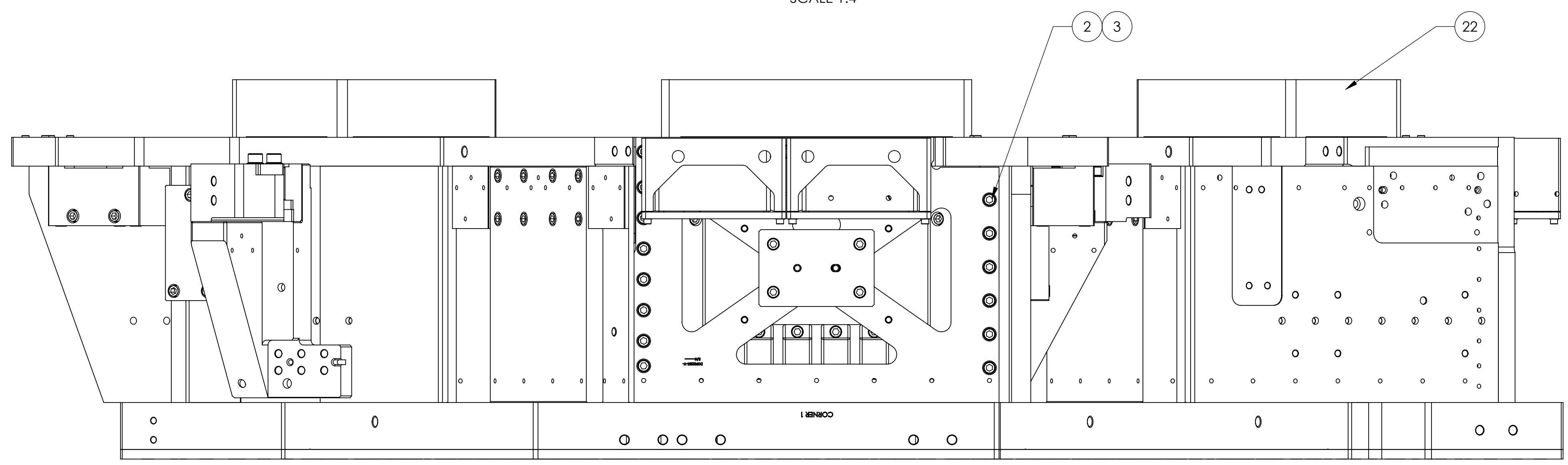
NOTES AND TOLERANCES: (UNLESS OTHERWISE SPECIFIED)		CALIFORNIA INSTITUTE OF TECHNOLOGY MASSACHUSETTS INSTITUTE OF TECHNOLOGY		PART NAME	
DIMENSIONS ARE IN INCHES		SYSTEM ADVANCED LIGO SUB-SYSTEM SEI		STAGE 1 ASSEMBLY, aLIGO BSC ISI	
MATERIAL	N/A	FINISH	N/A μinch	DESIGNER	F.MATICHARD 16 Sept. 2009
				DRAFTER	M.HILLARD 23 June 2010
				CHECKER	A.STEIN 23 June 2010
				APPROVAL	K.MASON 23 June 2010
				SIZE	D
				DWG. NO.	D0901180
				REV.	v3
				SCALE:	1:4
				PROJECTION:	
					SHEET 1 OF 4

D0901180-Asst LIGO BSC Stage 1 Assembly, PART FDM REV. X-128, DRAWING FDM REV. X-010

8 7 6 5 4 3 2 1

H
G
F
E
D
C
B
A

SCALE 1:4



LIGO CALIFORNIA INSTITUTE OF TECHNOLOGY MASSACHUSETTS INSTITUTE OF TECHNOLOGY		REV.
SIZE	DWG. NO.	REV.
D	D0901180	v3
SCALE: 1:8	PROJECTION:	SHEET 2 OF 4

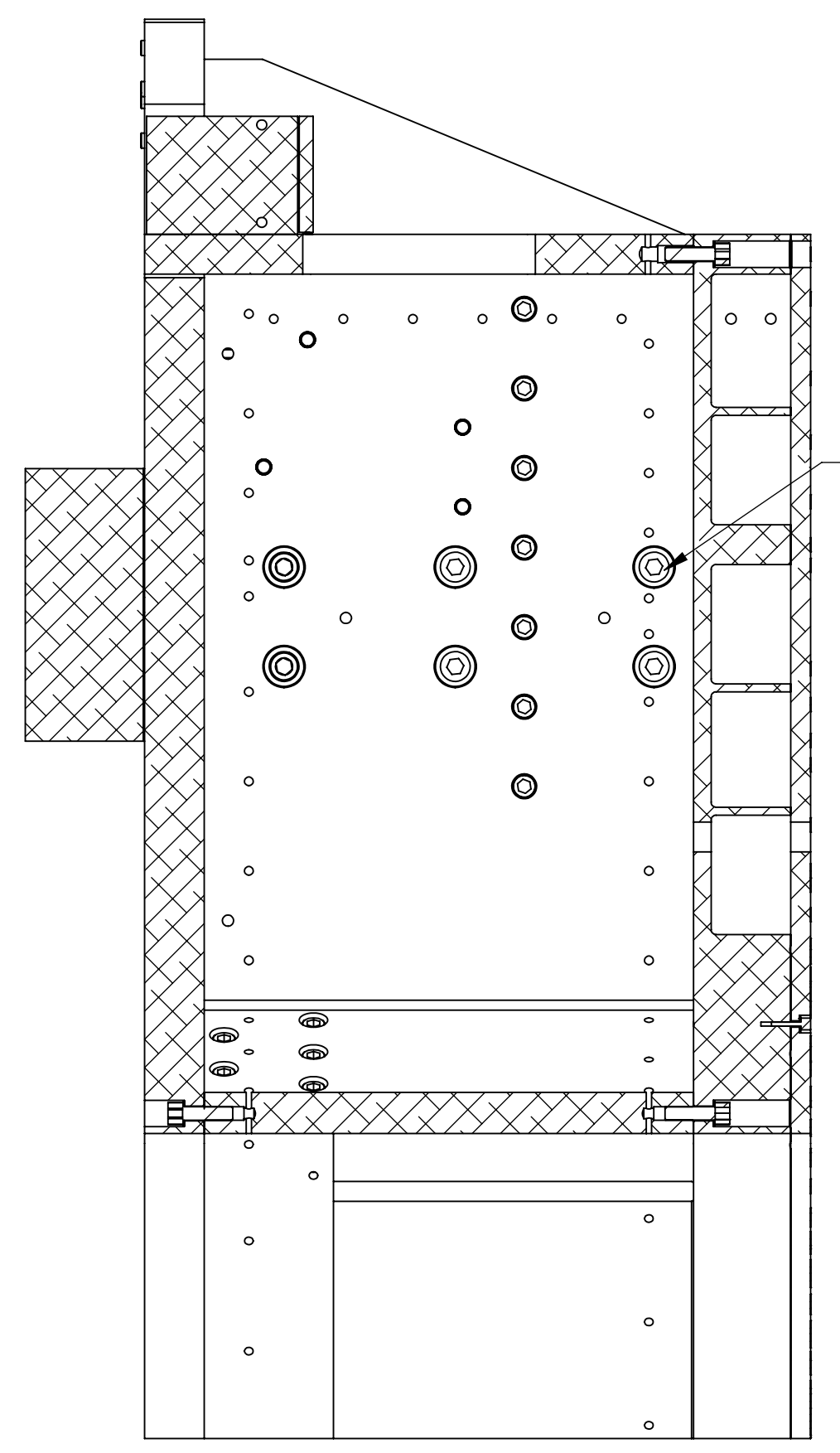
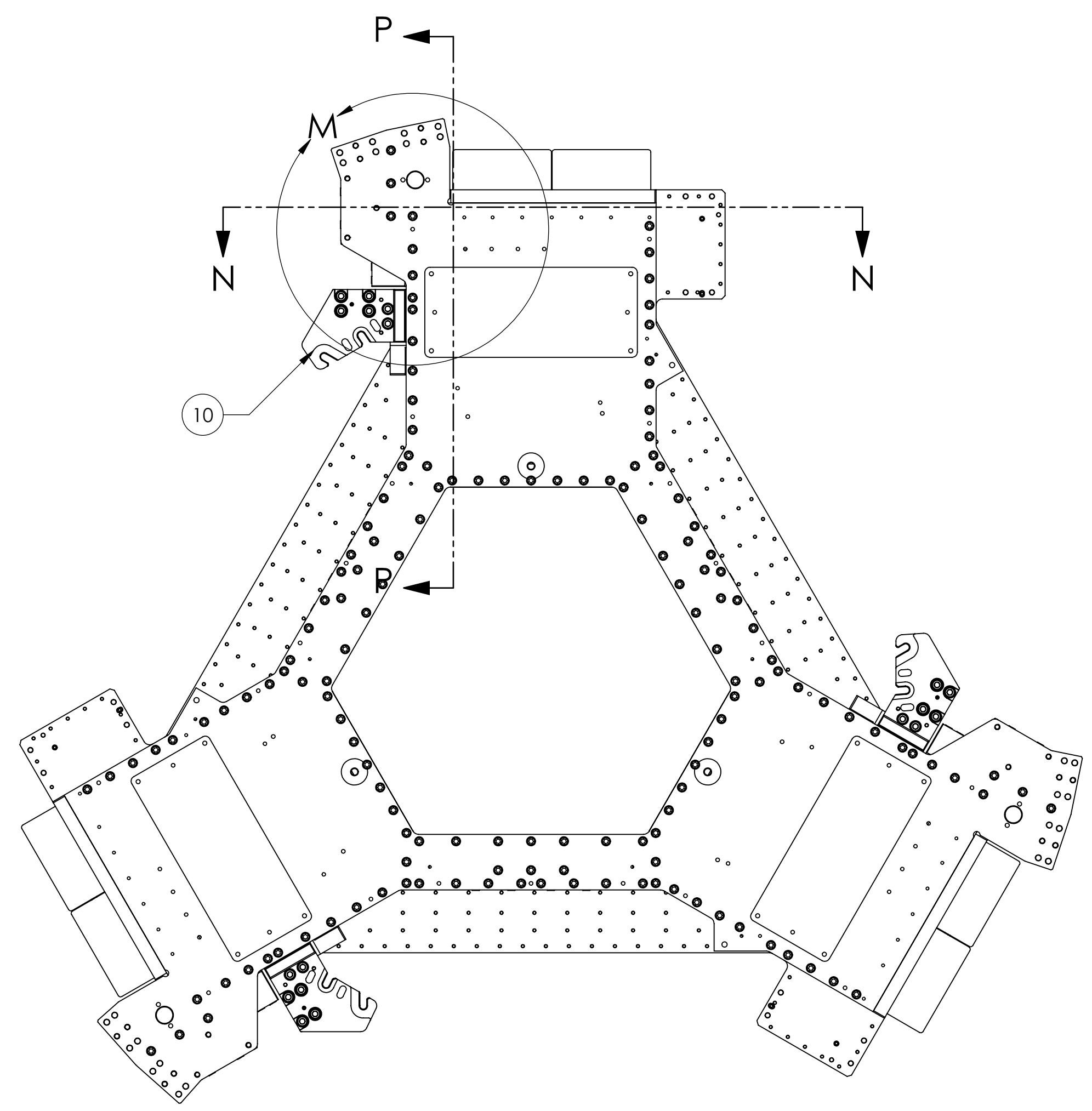
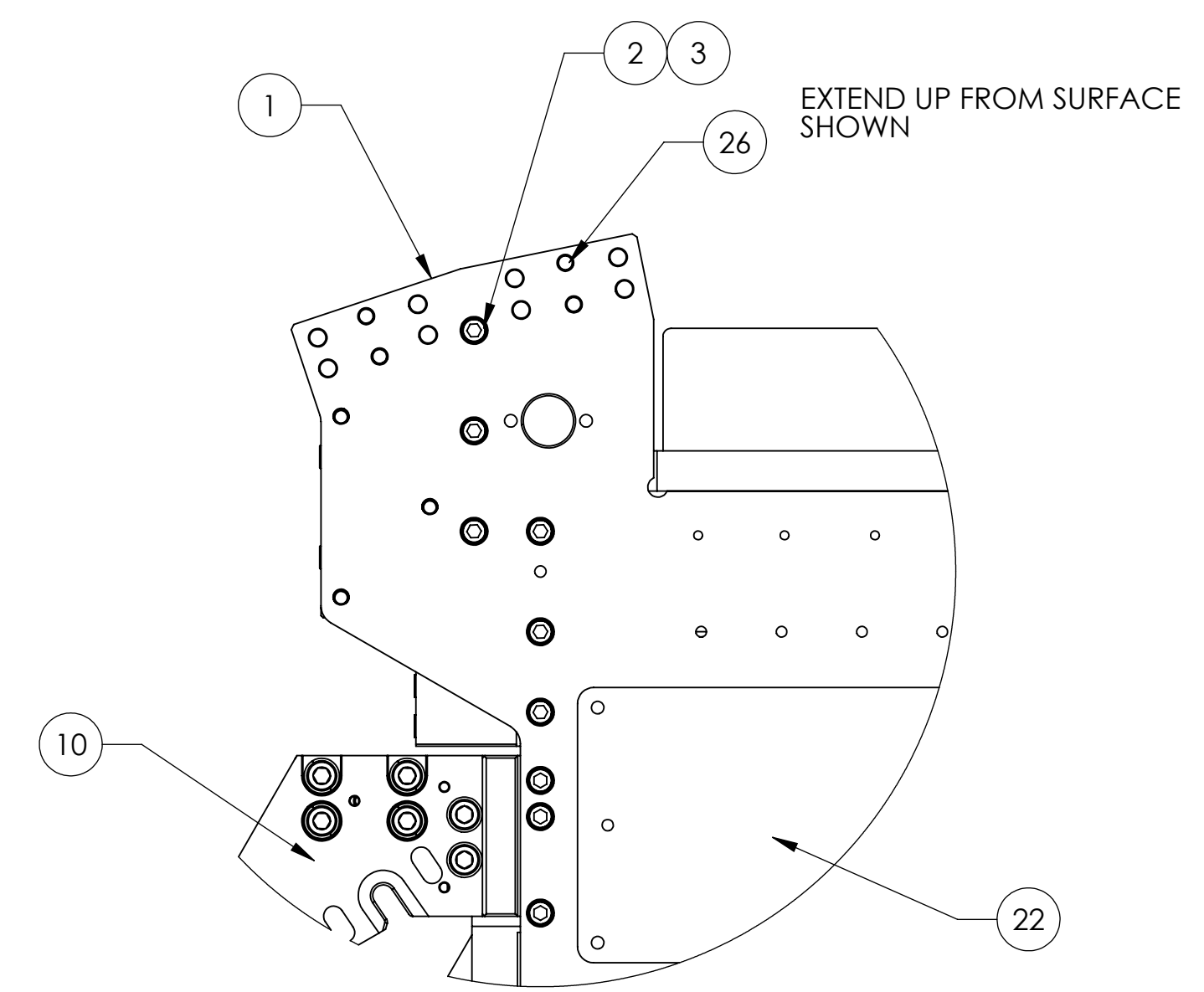
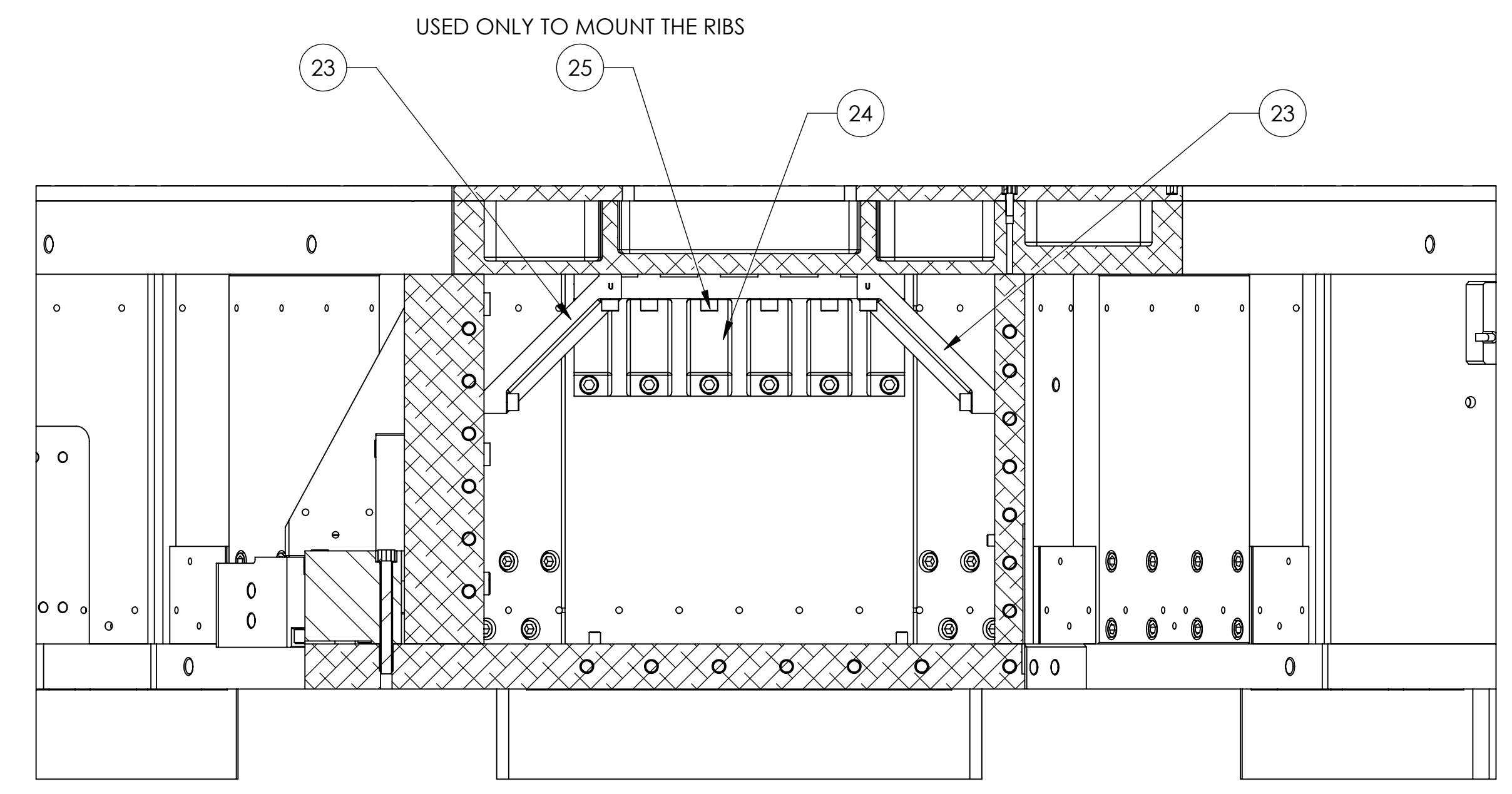
8 7 6 5 4 3 2 1

DDP01180_A31 LIGO SEC Stage 1 Assembly, PART FDM REV. X-128, DRAWING FDM REV. X-010

8 7 6 5 4 3 2 1

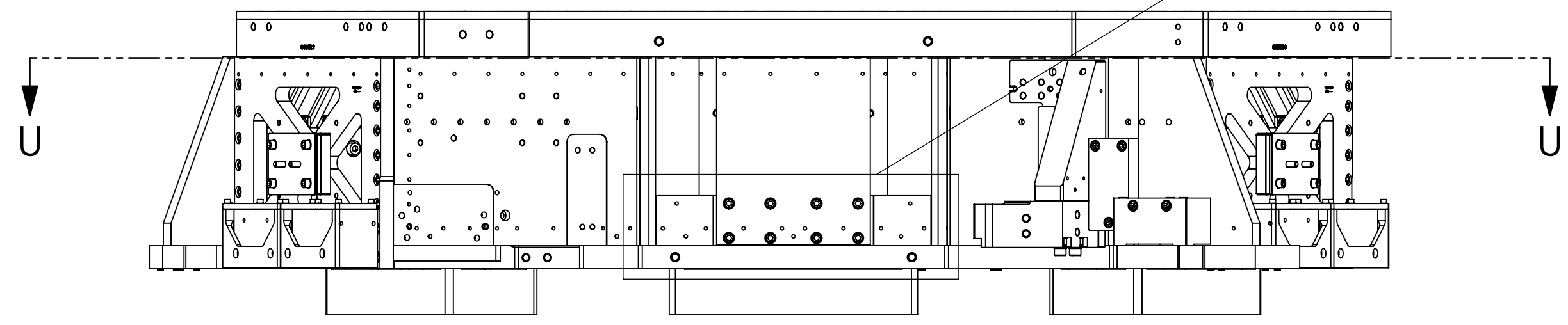
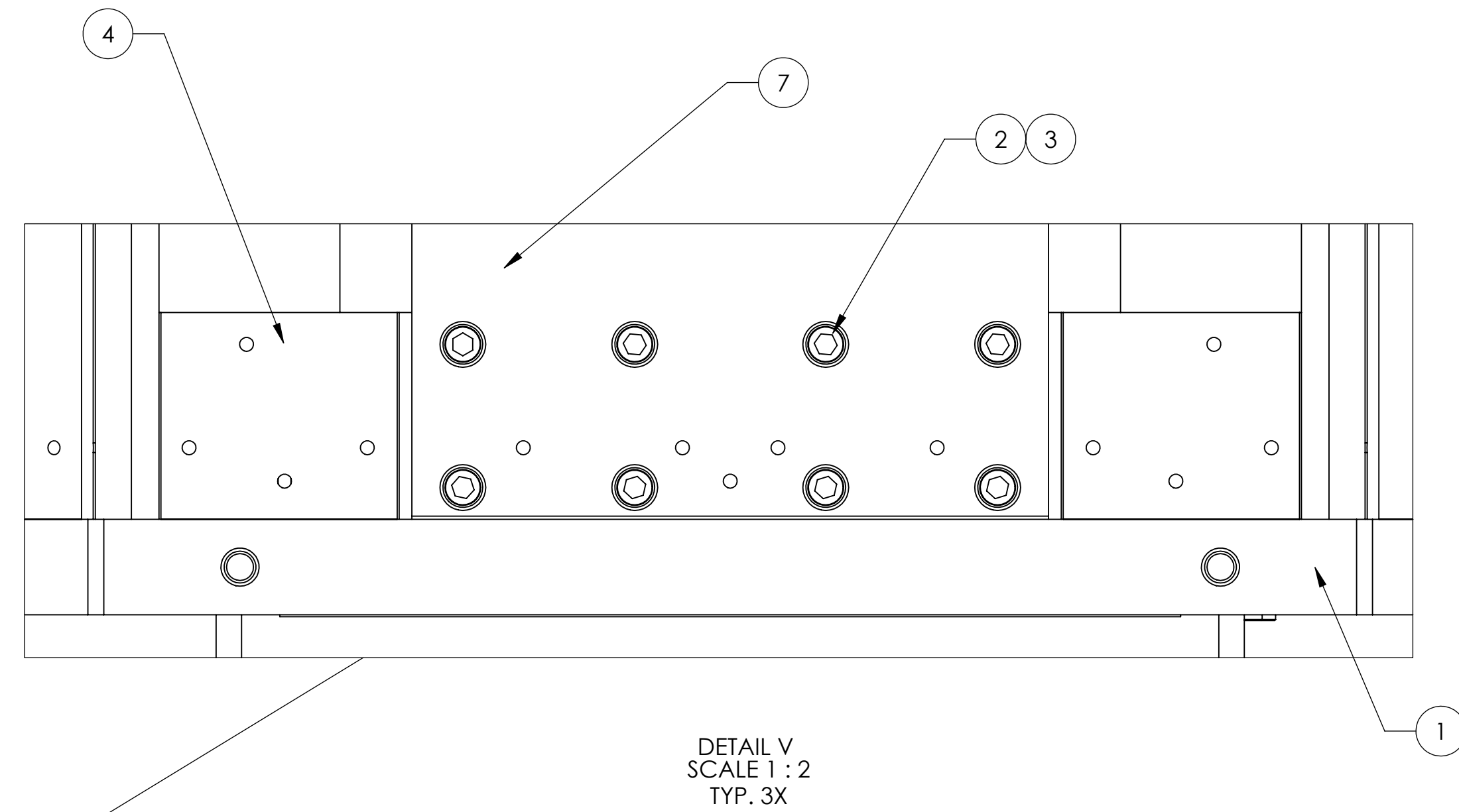
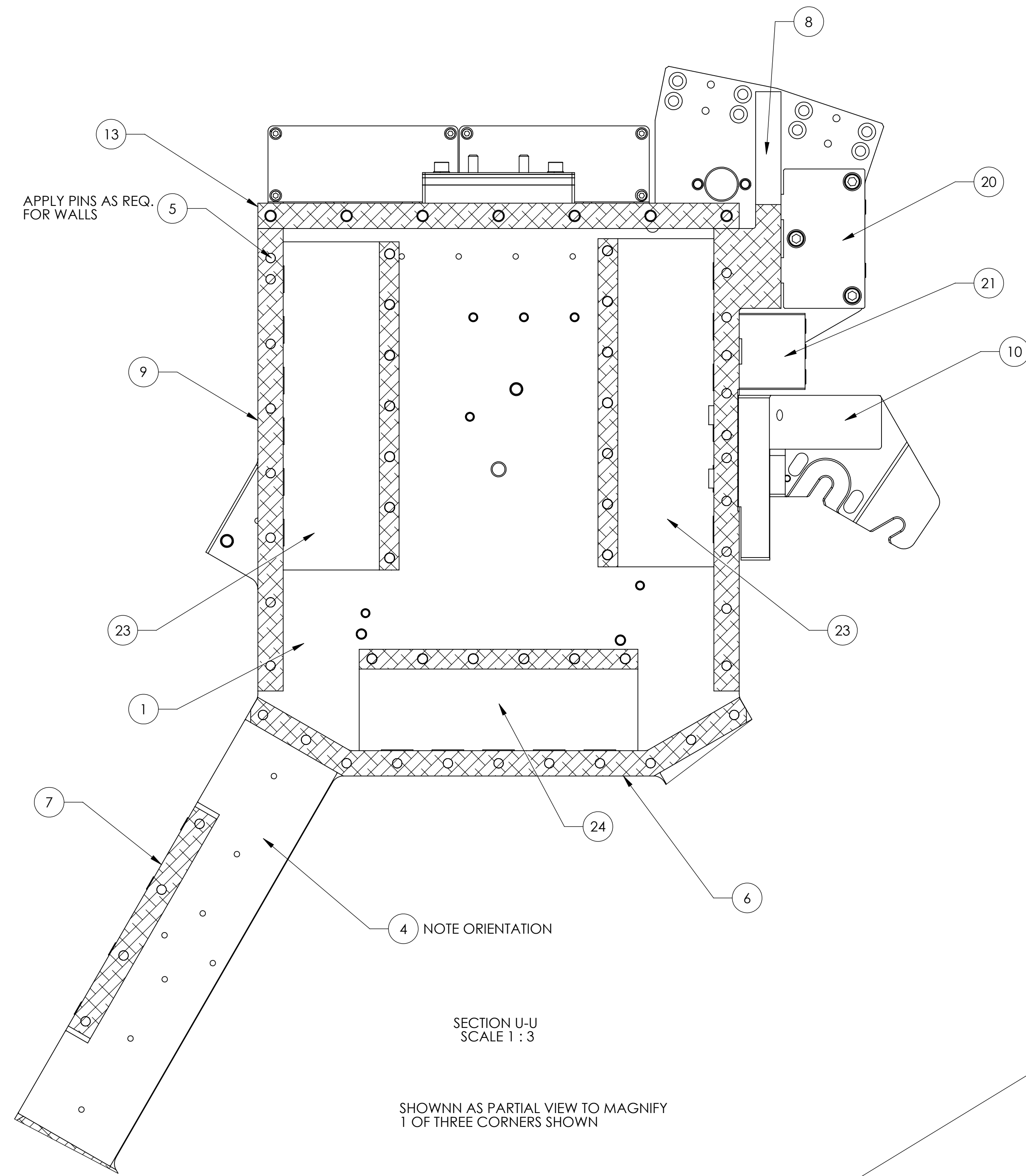
H
G
F
E
D
C
B
A

H
G
F
E
D
C
B
A



LIGO CALIFORNIA INSTITUTE OF TECHNOLOGY MASSACHUSETTS INSTITUTE OF TECHNOLOGY		REV.
SIZE DWG. NO.	D0901180	v3
SCALE: 1:8	PROJECTION:	SHEET 3 OF 4

DDP01180-ADD LIGO SEC Stage 1 Assembly, PART FDM REV. X-126, DRAWING FDM REV. X-010



LIGO CALIFORNIA INSTITUTE OF TECHNOLOGY MASSACHUSETTS INSTITUTE OF TECHNOLOGY		REV.
SIZE	DWG. NO.	REV.
D	D0901180	v3
SCALE: 1:8	PROJECTION:	SHEET 4 OF 4

DDP01180-Asst LIGO SEC Stage 1 Assembly, PART FDM REV. X-128L DRAWING FDM REV. X-010