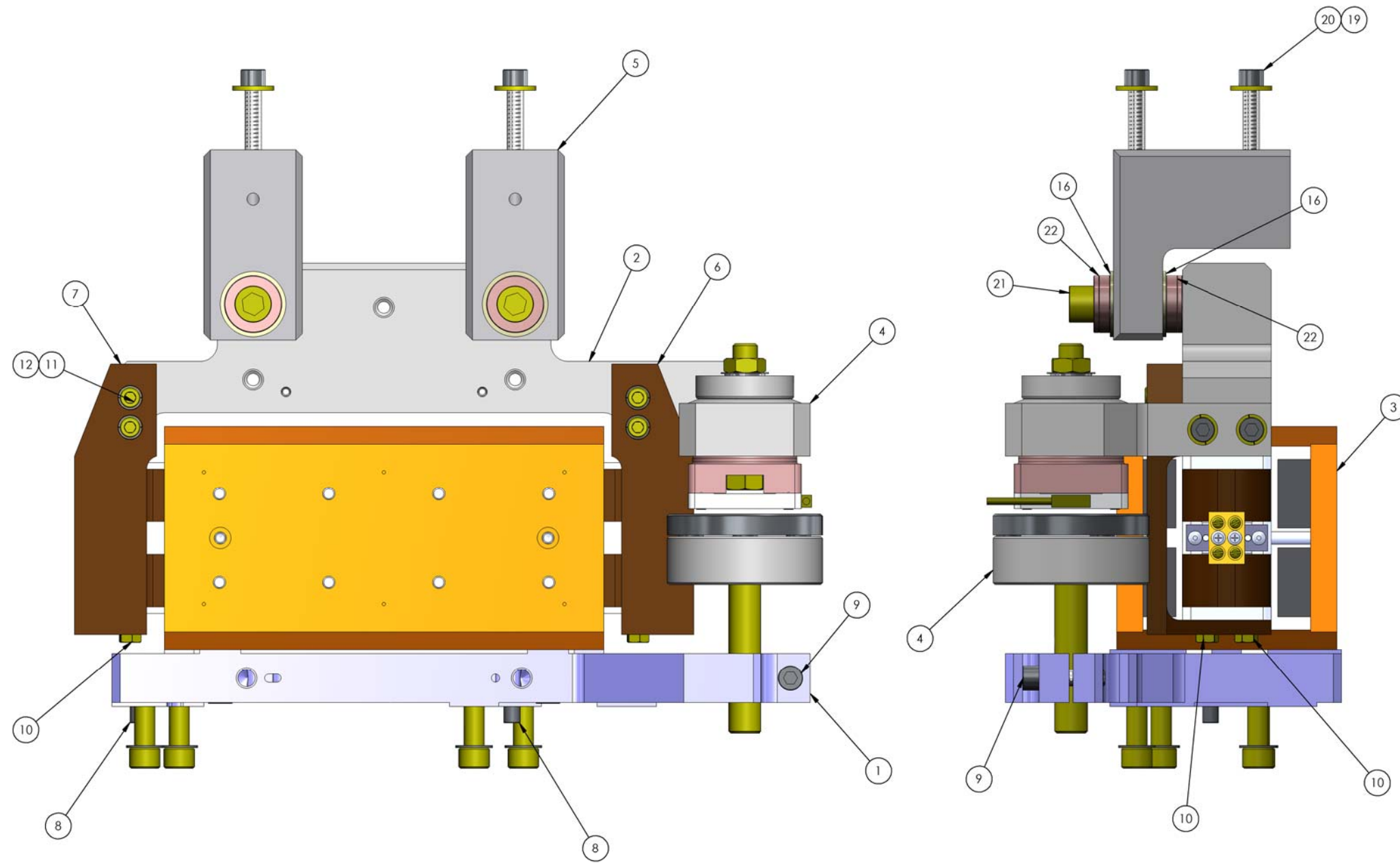


NOTES CONTINUED:  
 5. VENDOR REFERENCES ARE PROVIDED AS EXAMPLES OF PARTS MEETING ALL REQUIRED SPECIFICATIONS. EQUIVALENTS ARE ALWAYS ACCEPTABLE UNLESS OTHERWISE SPECIFIED.  
 6. ASSEMBLY PROCEDURE: E0900357 AND E1000096.

REV.	DATE	DCN #	DRAWING TREE #
v1	27 Jan. 2010	E1000049	E1000025
v2	24 Aug 2010	E1000353	E1000025
v3	13 Apr. 2011	E1000662	E1000025

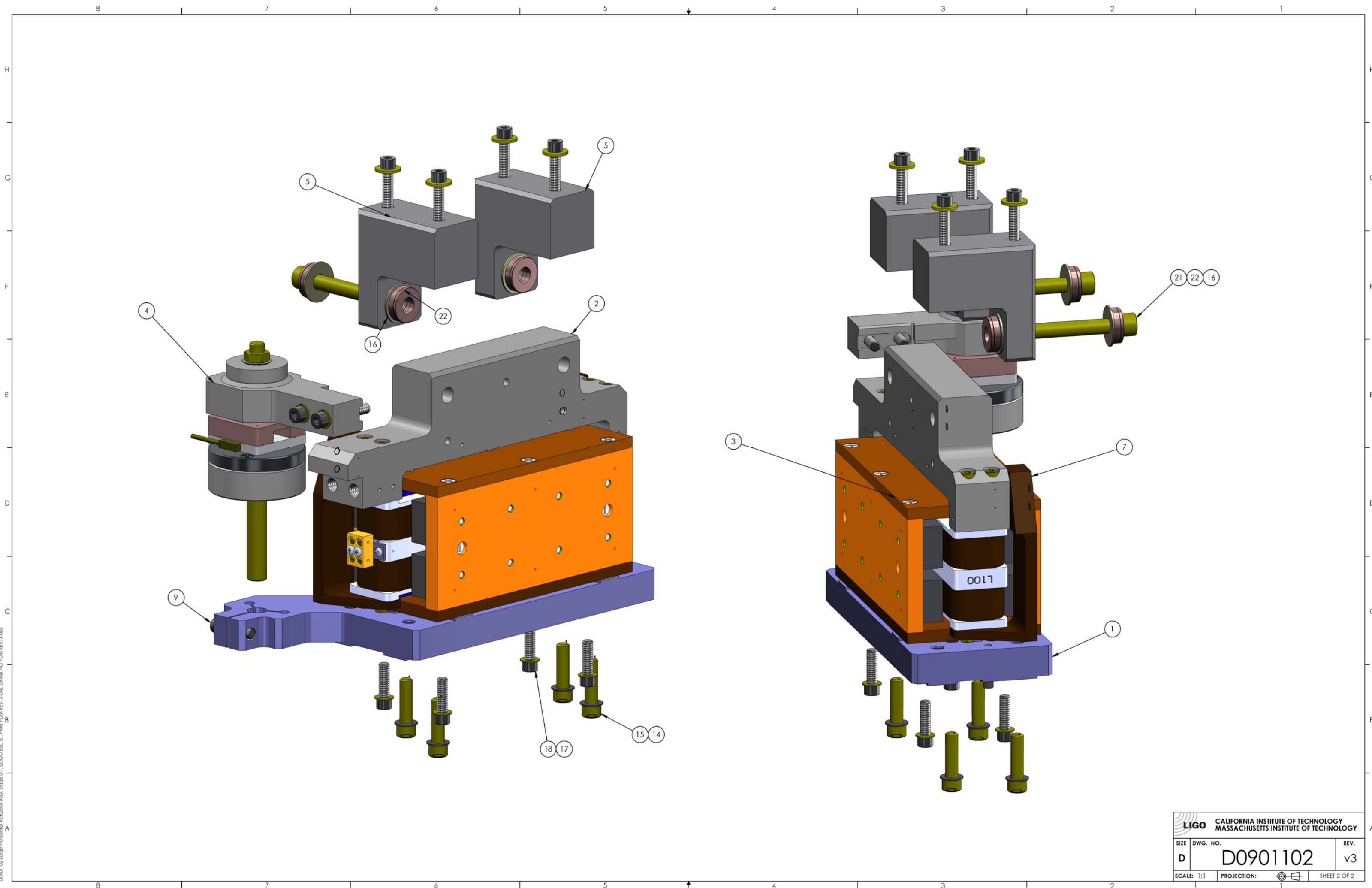


ITEM NO.	PART NUMBER	DESCRIPTION	MATERIAL	Running Config/Qty.
23	D1002282	STEP PIN, LARGE ACTUATOR, aLIGO BSC ISI	18-8 SS	2
22	McMaster_91944A450	Spherical Washer .406 id x .88 od x .25 thk	18-8 SSSL	4
21	MCMaster_92196A633	SHCS 3/8-16 x 2.25 lg. 1 1/4 to full thd	18-8 SSSL	2
20	HOLKROME_7B066	Screw 1/4-20 x 1.5 lg SHCS	18-8 SS	4
19	MSC_7322886	WASHER .28 ID X .63 OD X .05-.08 THK	300 SSSL	4
18	HOLKROME_7B060	SHCS, 1/4"-20x.875"	18-8 SS	4
17	UCC WFV-25	Flat Washer, Vented .255 ID, .46 OD, .032 THK	18-8 SSSL	4
16	MCMaster_92141A051	Flat Washer, 3/8" ID, 1" OD	18-8 SS	4
15	McMaster_92196A584	Screw, SHCS, 5/16-18 x 1 1/8 lg.	18-8 SSSL	4
14	UC_COMPONENTS_WFV-31	Washer Vented, .328 ID X .562 OD X .032 THK #5/16	18-8 SSSL	4
13	McMaster_92196A291	Screw SHCS, 10-32 x 1.375 lg.	18-8 SSSL	4
12	UC_COMPONENTS_WFV-10	Washer Vented, 0.195 ID, 0.354 OD, 0.032 THK #10	18-8 SS	8
11	McMaster_92196A271	Screw SHCS 10-32 x .62 lg.	18-8 SSSL	4
10	UC_COMPONENTS_H-1006	Hex Head Machine Screw, 10-32 x 3/8 lg vented	18-8 SSSL	4
9	HOLKROME_7B062	SHCS, 1/4"-20x1.0"	18-8 SS	1
8	McMaster_90145A539	Dowel Pin 1/4" (.2501) x 5/8" L 18.8 SST	18-8 Stainless	2
7	D1000175	THERMAL BAR, LEFT, LARGE ACTUATOR, aLIGO BSC ISI	COPPER	1
6	D1000176	THERMAL BAR, RIGHT, LARGE ACTUATOR, aLIGO BSC ISI	COPPER	1
5	D0902424	HORIZONTAL ACTUATOR L CONNECTOR, STAGE 0-1, aLIGO BSC ISI	6061-T6 Al	2
4	D1000478	SENSOR ASSEMBLY HORIZONTAL, aLIGO BSC ISI	N/A	1
3	D0902749	Large Actuator, aLIGO SEI HAM-ISI & BSC-ISI	N/A	1
2	D0902427	ACTUATOR COIL BRACKET HORIZONTAL, STAGE 0-1, aLIGO BSC ISI	6061-T6 Al	1
1	D0902310	ACTUATOR MAGNET BRACKET, STAGE 0-1, aLIGO BSC ISI	6061-T6 Al	1

NOTES AND TOLERANCES: (UNLESS OTHERWISE SPECIFIED)	
1. INTERPRET DRAWING PER ASME Y14.5-1994. 2. REMOVE ALL SHARP EDGES, R.02 MIN. 3. DO NOT SCALE FROM DRAWING. 4. ALL MACHINING FLUIDS MUST BE FULLY SYNTHETIC, FULLY WATER SOLUBLE AND FREE OF SULFUR, SILICONE, AND CHLORINE.	
DIMENSIONS ARE IN INCHES	
TOLERANCES: .XX ± N/A .XXX ± N/A	
ANGULAR ± N/A *	
MATERIAL	N/A
FINISH	N/A μinch

LIGO CALIFORNIA INSTITUTE OF TECHNOLOGY MASSACHUSETTS INSTITUTE OF TECHNOLOGY		PART NAME	
ADVANCED LIGO		LARGE HORIZONTAL ACTUATOR ASSY, aLIGO BSC ISI	
DESIGNER	S.BARNUM	01 Mar. 2010	SIZE
DRAFTER	M.HILLARD	27 Jan. 2010	DWG. NO.
CHECKER	F.AMICHARD	27 Jan. 2010	D
APPROVAL	K.MASON	27 Jan. 2010	D0901102
NEXT ASSY		D1000310	
SCALE: 1:1		PROJECTION:	
SHEET 1 OF 2		REV. v3	

D0901102 Large Horizontal Actuator Assy, Stage 0-1, aLIGO BSC ISI, PART EDM REV: X046, DRAWING PDM REV: X005



<b>LIGO</b> CALIFORNIA INSTITUTE OF TECHNOLOGY MASSACHUSETTS INSTITUTE OF TECHNOLOGY		
SIZE	DWG. NO.	REV.
D	D0901102	v3
SCALE: 1:1	PROJECTION:	SHEET 2 OF 2

D0901102 Large Horizontal Actuator Assy, Stage 0-1, at LIGO BIC III, PART FDM REV: X-046, DRAWING FDM REV: X-005