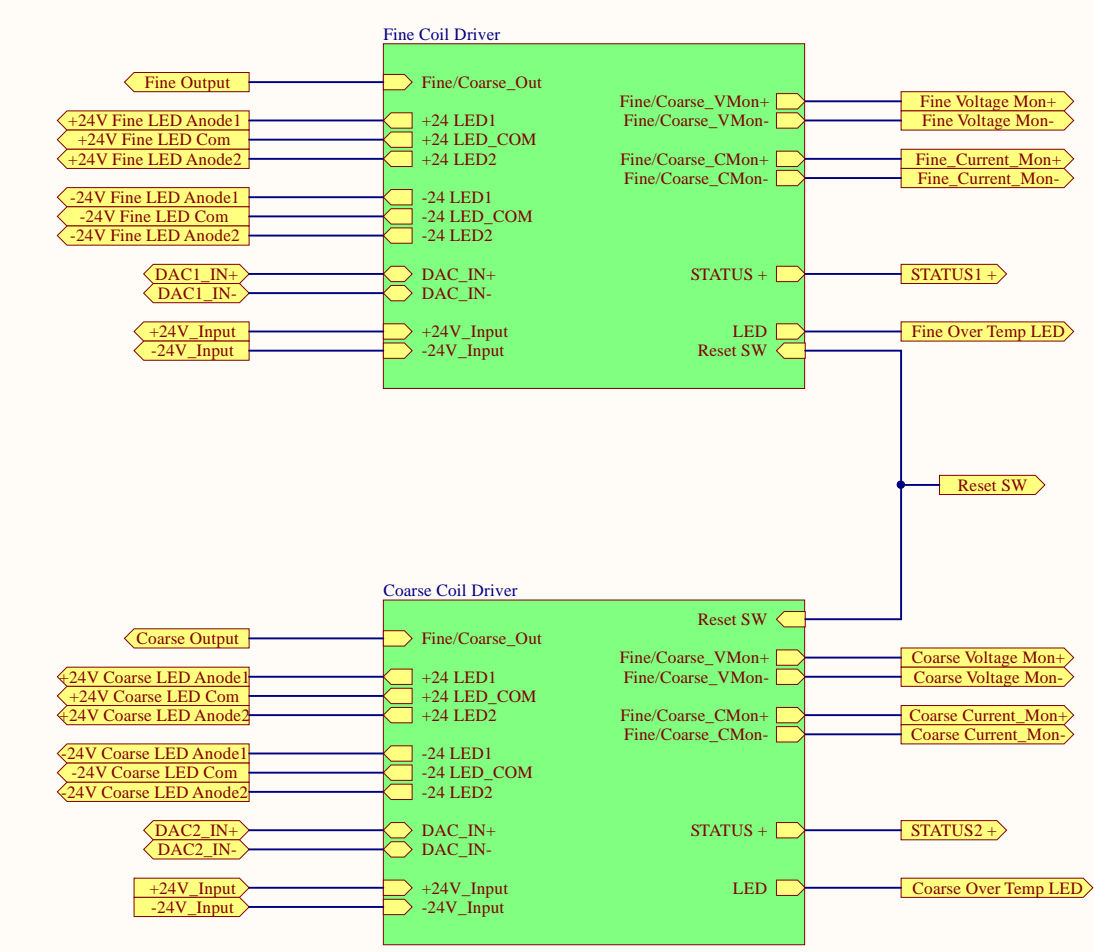
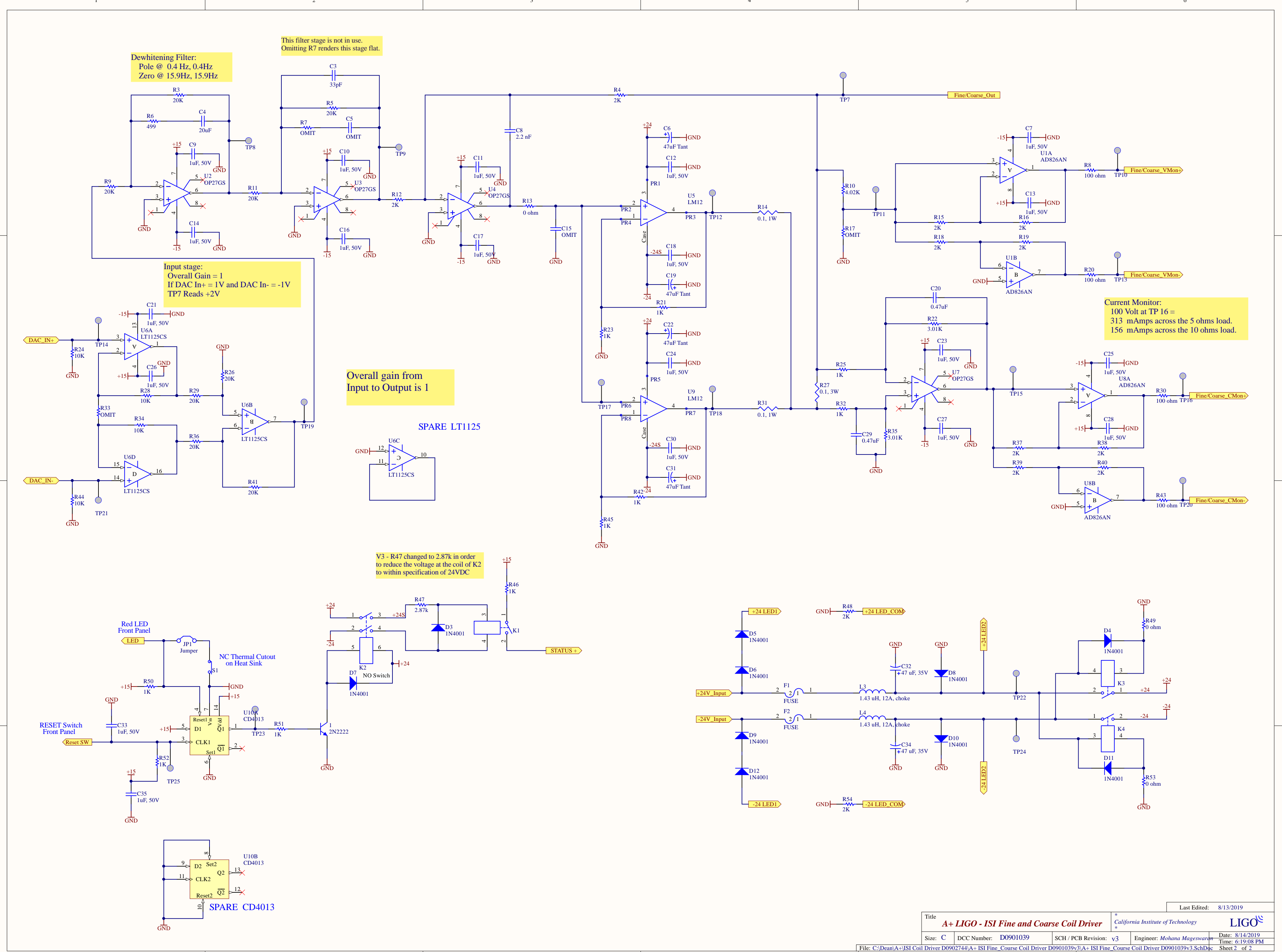
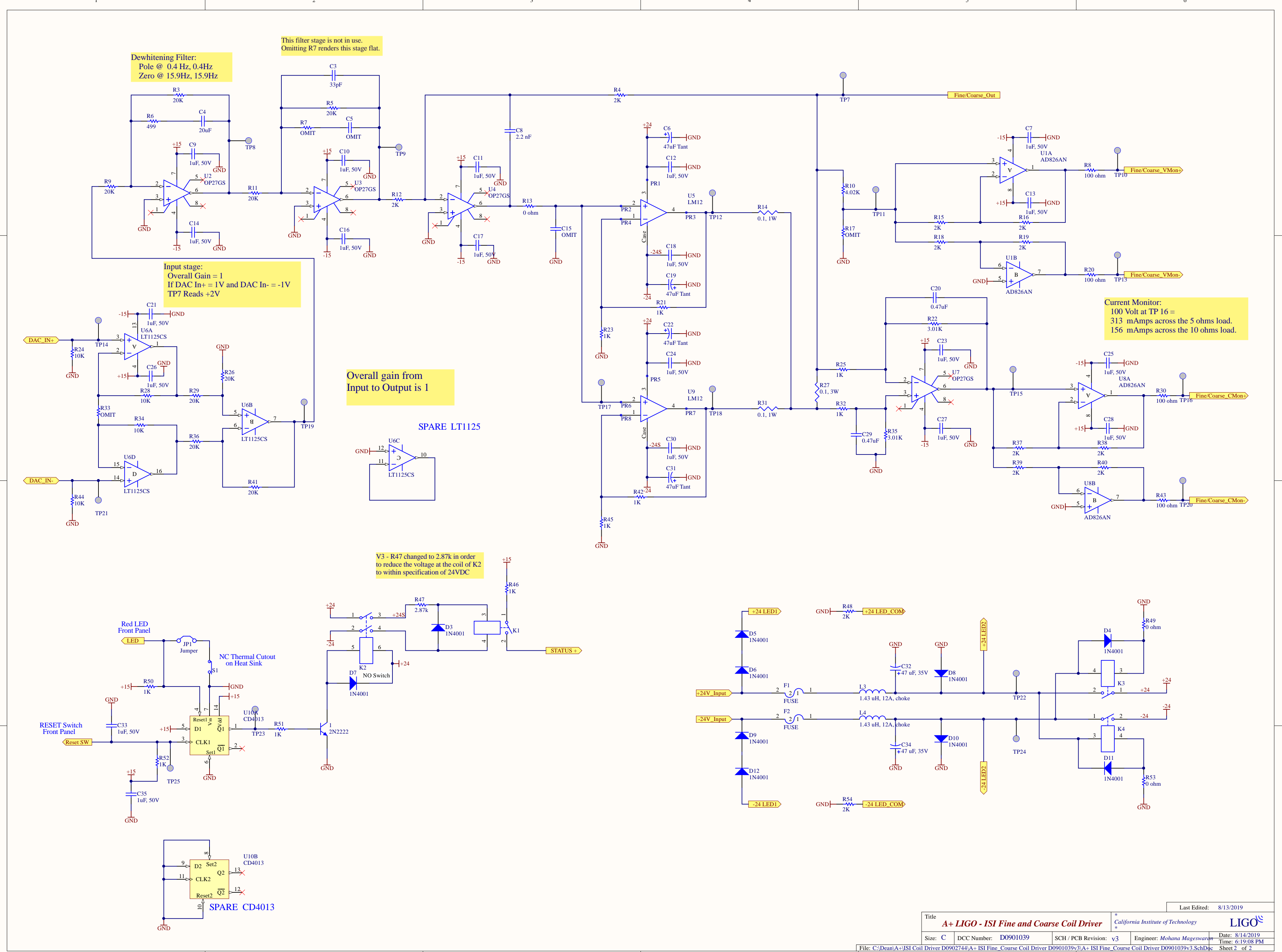


Connector P3 interfaces with the LED PCB Board attached to the front panel.







Dewhitening Filter:
Pole @ 0.4 Hz, 0.4Hz
Zero @ 15.9Hz, 15.9Hz

This filter stage is not in use.
Omitting R7 renders this stage flat.

Input stage:
Overall Gain = 1
If DAC In+ = +1V and DAC In- = -1V
TP7 Reads +2V

Overall gain from
Input to Output is 1

Current Monitor:
100 Volt at TP 16 =
313 mAmps across the 5 ohms load.
156 mAmps across the 10 ohms load.

V3 - R47 changed to 2.87k in order
to reduce the voltage at the coil of K2
to within specification of 24VDC