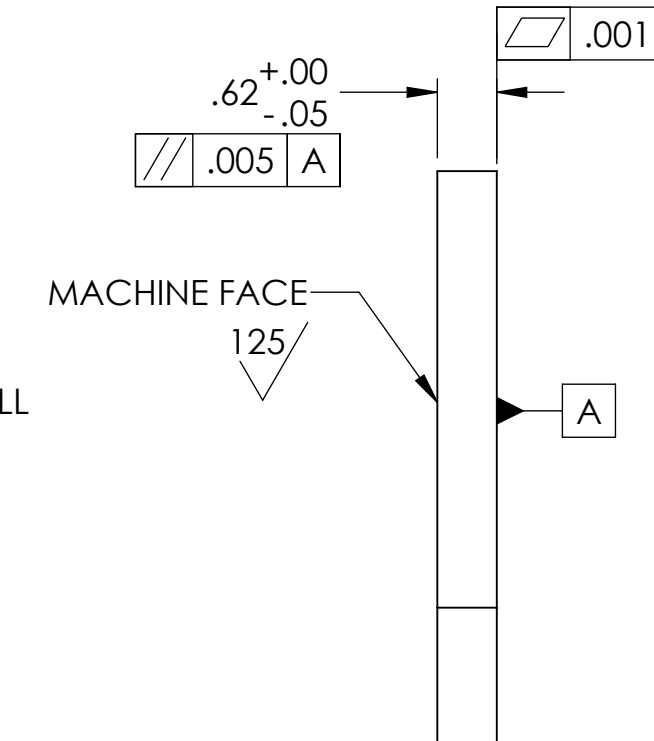
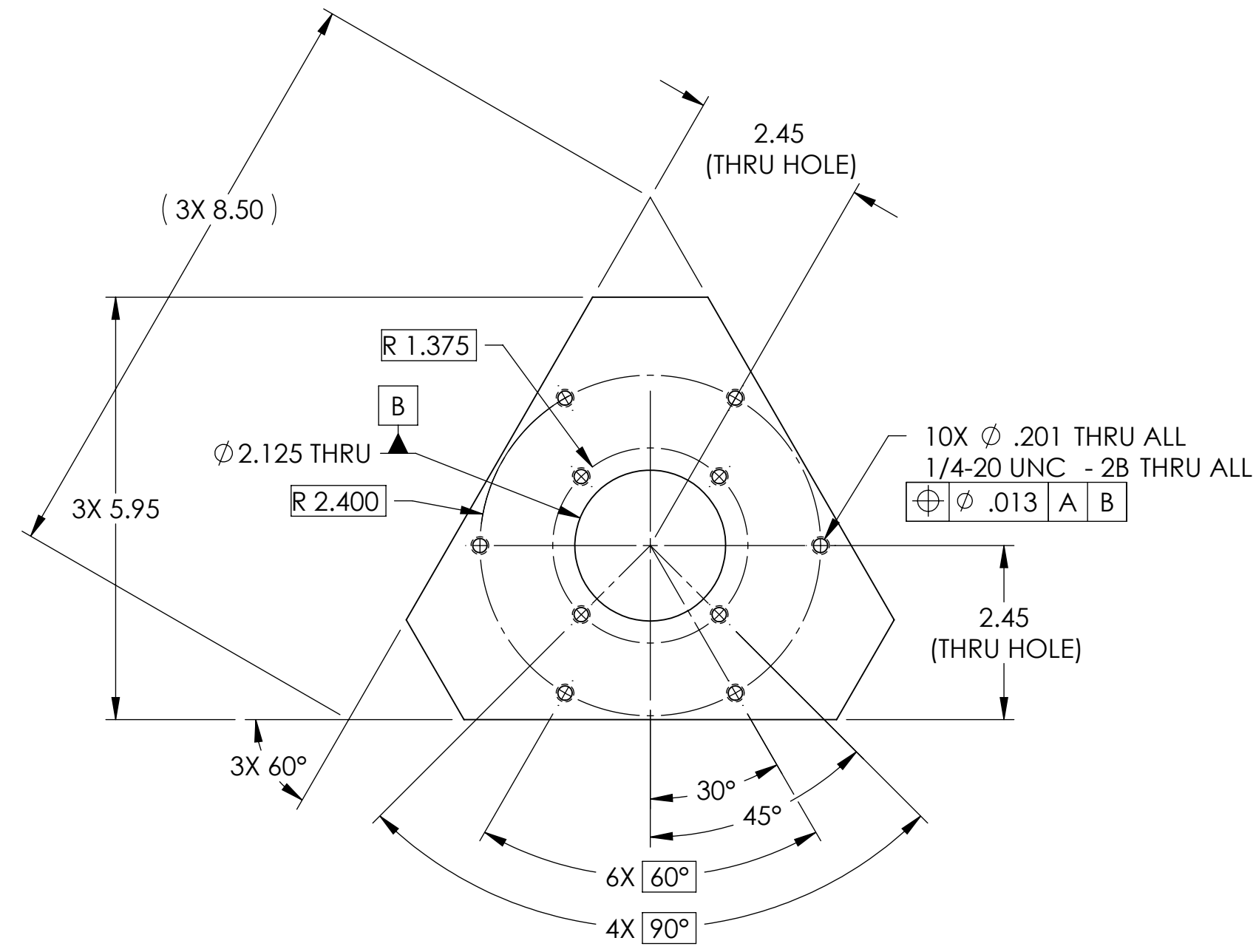
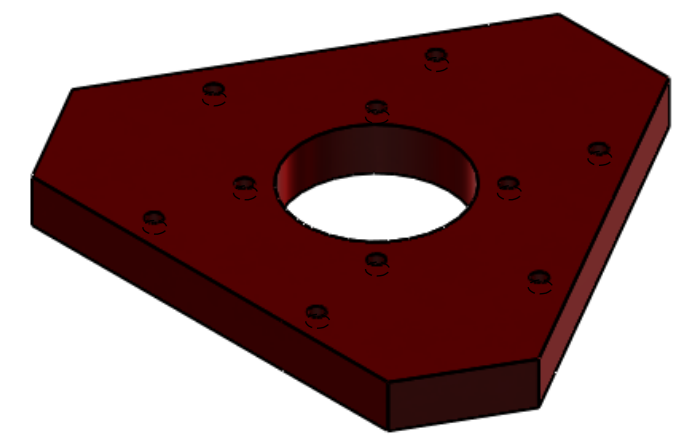


D0900773 AdvLIGO AOS Pier Table, PART PDM REV: X-028, DRAWING PDM REV: X-015

NOTES CONTINUED:

REV.	DATE	DCN #	DRAWING TREE #
v1	16 JUNE 2009	E0900144	E0900145
v2	23 JUNE 2009	E0900174	E0900145
-	-	-	-



NOTES AND TOLERANCES: (UNLESS OTHERWISE SPECIFIED)				SYSTEM		SUB-SYSTEM		PART NAME	
DIMENSIONS ARE IN INCHES TOLERANCES: .XX ± .01 .XXX ± .005 ANGULAR ± 1.0°				LIGO CALIFORNIA INSTITUTE OF TECHNOLOGY MASSACHUSETTS INSTITUTE OF TECHNOLOGY		ADVANCED LIGO		AOS	
1. INTERPRET DRAWING PER ASME Y14.5-1994. 2. REMOVE ALL SHARP EDGES, R.02 MIN. 3. DO NOT SCALE FROM DRAWING. 4. ALL MACHINING FLUIDS SHALL BE WATER SOLUBLE AND FREE OF SULFUR, CHLORINE AND SILICONE, SUCH AS CINCINNATI MILACRON'S CIMTECH 410.				MATERIAL AISI 304		FINISH N/A µinch		NEXT ASSY D0900657	
				DESIGNER C. CONLEY		16 JUNE 2009		SIZE DWG. NO. B D0900773	
				DRAFTER C. CONLEY		16 JUNE 2009		REV. v2	
				CHECKER APPROVAL				SCALE: NONE PROJECTION:  SHEET 1 OF 1	