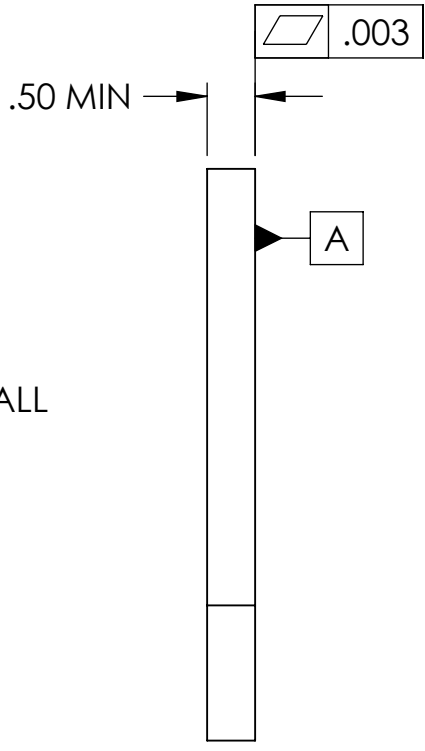
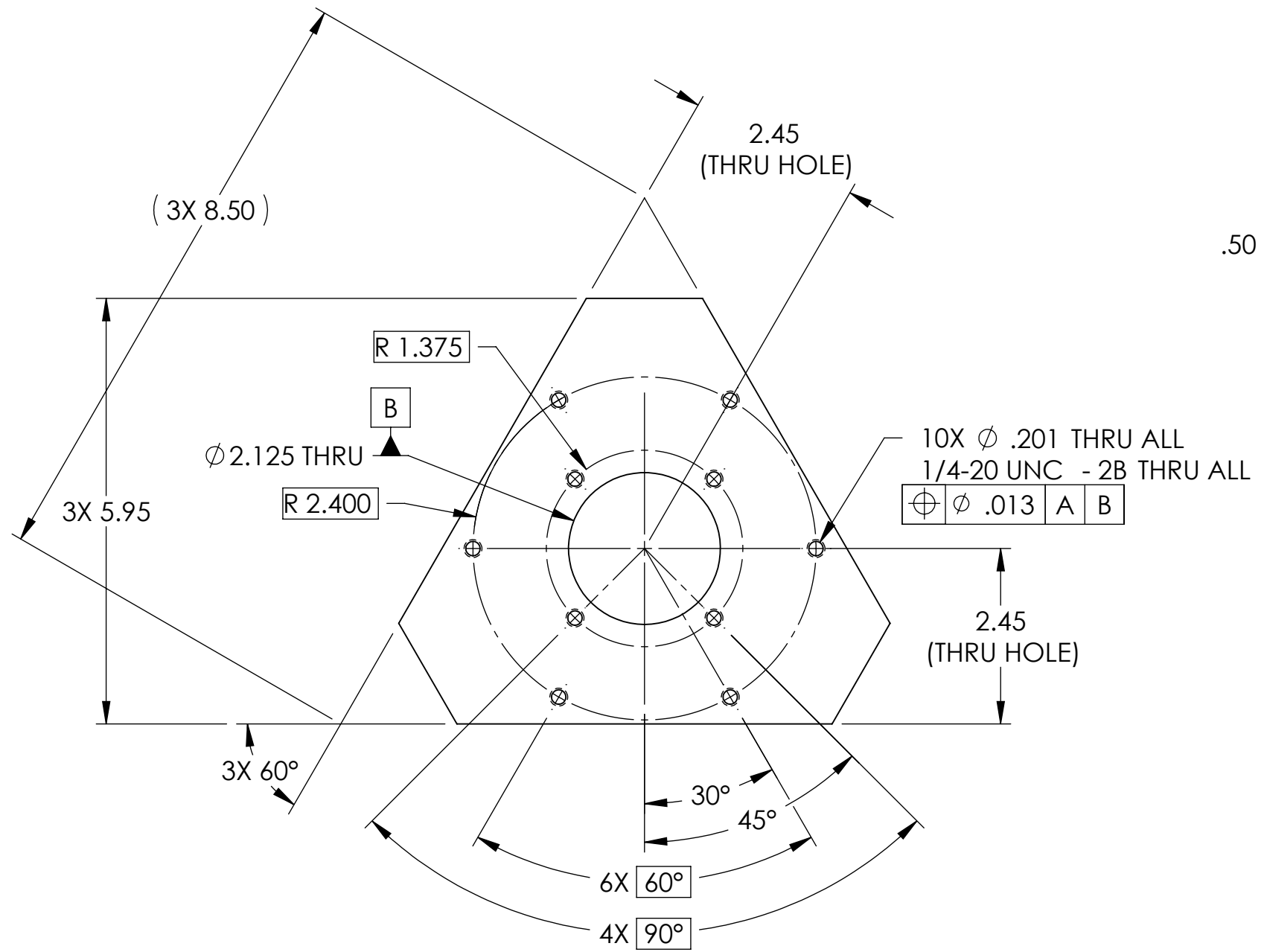
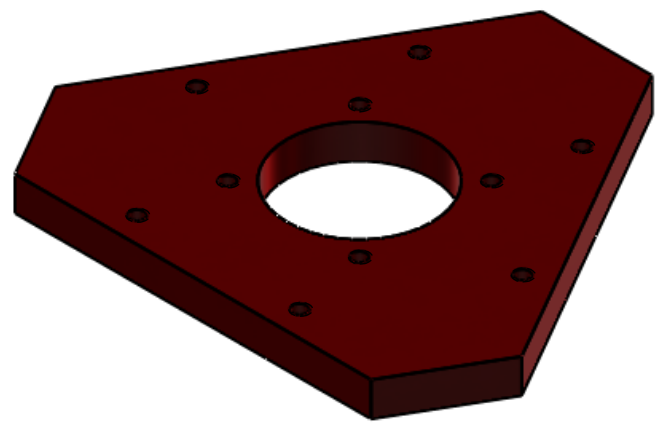


8 7 6 5 4 3 2 1

NOTES CONTINUED:

REV.	DATE	DCN #	DRAWING TREE #
v1	16 JUNE 2009	E0900144	E0900145
-	-	-	-
-	-	-	-



D0900773 AdvLIGO AOS Pier Table, PART PDM REV: X-024, DRAWING PDM REV: X-011

NOTES AND TOLERANCES: (UNLESS OTHERWISE SPECIFIED)				SYSTEM		SUB-SYSTEM		PART NAME	
DIMENSIONS ARE IN INCHES TOLERANCES: .XX ± .01 .XXX ± .005 ANGULAR ± 1.0°				1. INTERPRET DRAWING PER ASME Y14.5-1994. 2. REMOVE ALL SHARP EDGES, R.02 MIN. 3. DO NOT SCALE FROM DRAWING. 4. ALL MACHINING FLUIDS SHALL BE WATER SOLUBLE AND FREE OF SULFUR, CHLORINE AND SILICONE, SUCH AS CINCINNATI MILACRON'S CIMTECH 410.		LIGO CALIFORNIA INSTITUTE OF TECHNOLOGY MASSACHUSETTS INSTITUTE OF TECHNOLOGY		AdvLIGO AOS PIER TABLE	
MATERIAL: AISI 304				FINISH: N/A μinch		NEXT ASSY: D0900657		DESIGNER: C. CONLEY 16 JUNE 2009 DRAFTER: C. CONLEY 16 JUNE 2009 CHECKER: APPROVAL:	
								SIZE DWG. NO. B D0900773	
								REV. v1	
								SCALE: NONE PROJECTION: SHEET 1 OF 1	

8 7 6 5 4 3 2 1