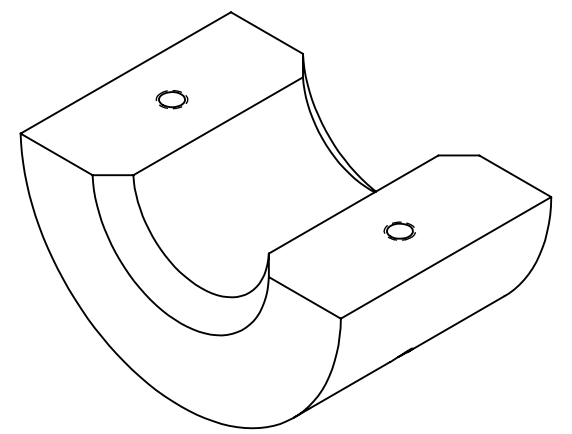
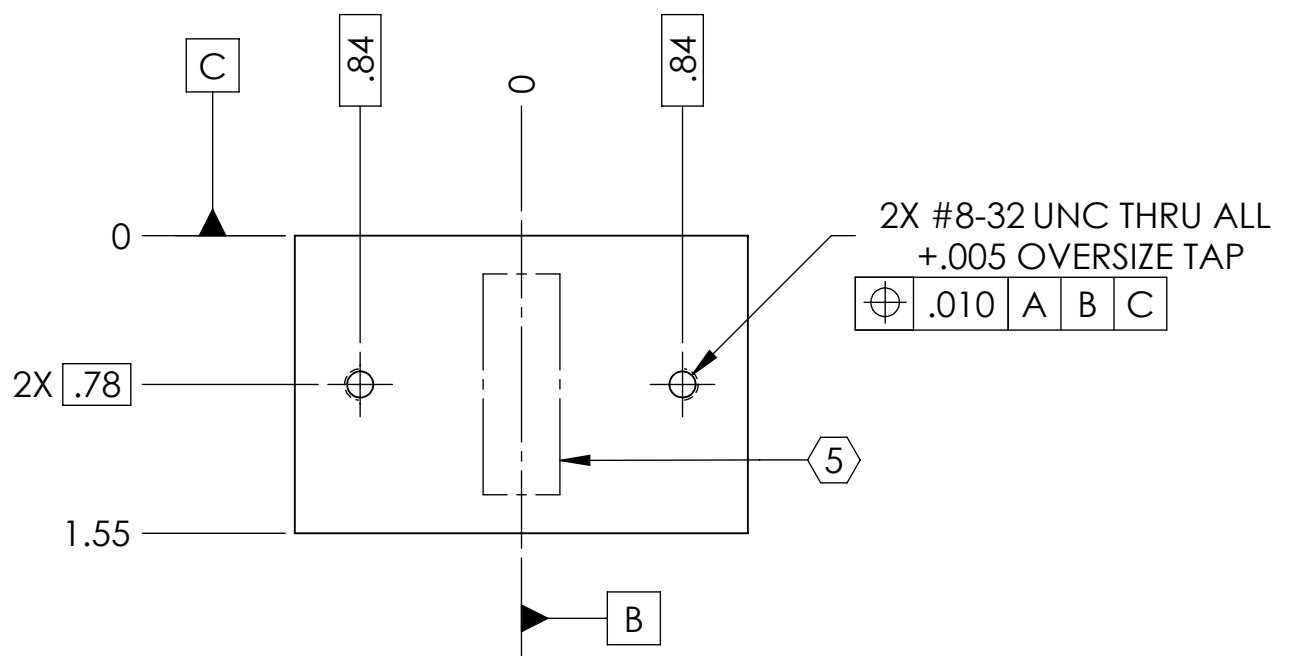
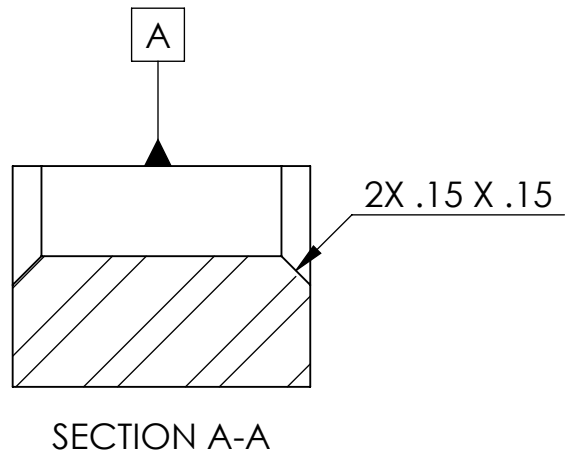
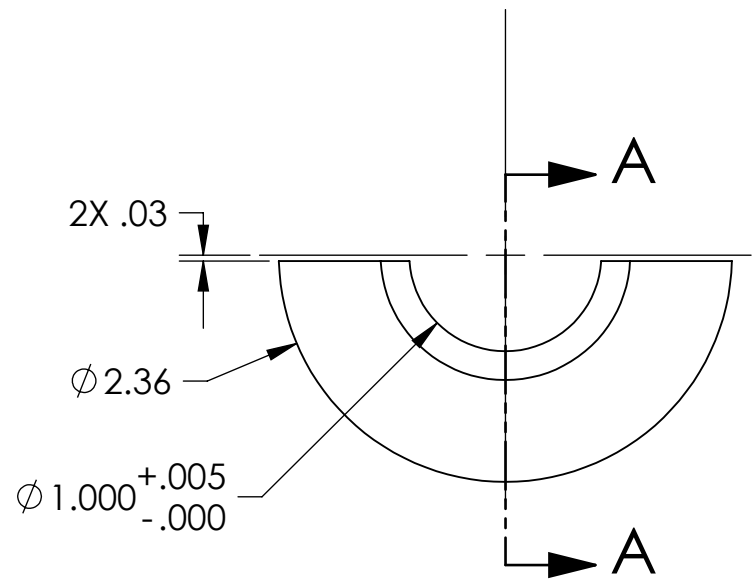


D080236_Advanced_LIGO_SUS_HLTS_Collar_Lower_700g_Intermediate_Mass_PART PDM REV: X-006, DRAWING PDM REV: X-004

NOTES CONTINUED:
 5 SCRIBE, ENGRAVE, OR MECHANICALLY STAMP (NO INKS OR DYES) DRAWING PART NUMBER AND REVISION ON NOTED SURFACE FOLLOWED ON THE NEXT LINE BY A THREE DIGIT SERIAL NUMBER. SERIAL NUMBERS START AT 001 FOR THE FIRST ARTICLE AND PROCEED CONSECUTIVELY. USE .07" HIGH CHARACTERS. EXAMPLE: DXXXXX-VY, S/N 001.
 700g LOWER HALF
 A VIBRATORY TOOL MAY BE USED.

REV.	DATE	DCN #	DRAWING TREE #
v1	22 JUN 2009	E0900173	E080191
-	-	-	-
-	-	-	-



NOTES AND TOLERANCES: (UNLESS OTHERWISE SPECIFIED)				LIGO		PART NAME	
DIMENSIONS ARE IN INCHES TOLERANCES: .XX ± .01 .XXX ± .005 ANGULAR ± 0.5°				CALIFORNIA INSTITUTE OF TECHNOLOGY MASSACHUSETTS INSTITUTE OF TECHNOLOGY		COLLAR, LOWER, 700g	
1. INTERPRET DRAWING PER ASME Y14.5-1994. 2. REMOVE ALL SHARP EDGES, R.02 MIN. 3. DO NOT SCALE FROM DRAWING. 4. ALL MACHINING FLUIDS SHALL BE WATER SOLUBLE AND FREE OF SULFUR, CHLORINE AND SILICONE, SUCH AS CINCINNATI MILACRON'S CIMTECH 410.				ADVANCED LIGO		DESIGNER D. BRIDGES 29 AUG 2008 DRAFTER D. BRIDGES 23 JUN 2009 CHECKER M. MEYER 24 JUN 2009 APPROVAL	
MATERIAL 304 SSSL				FINISH 32 µinch		DWG. NO. D080236	
NEXT ASSY INT. MASS CHANGER				SUB-SYSTEM SUS		REV. v1	
				SCALE: 1:1		SHEET 1 OF 1	