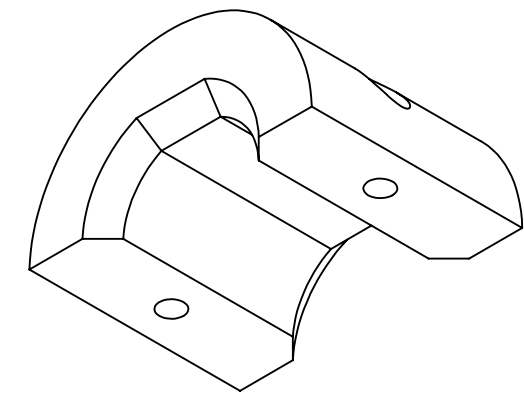
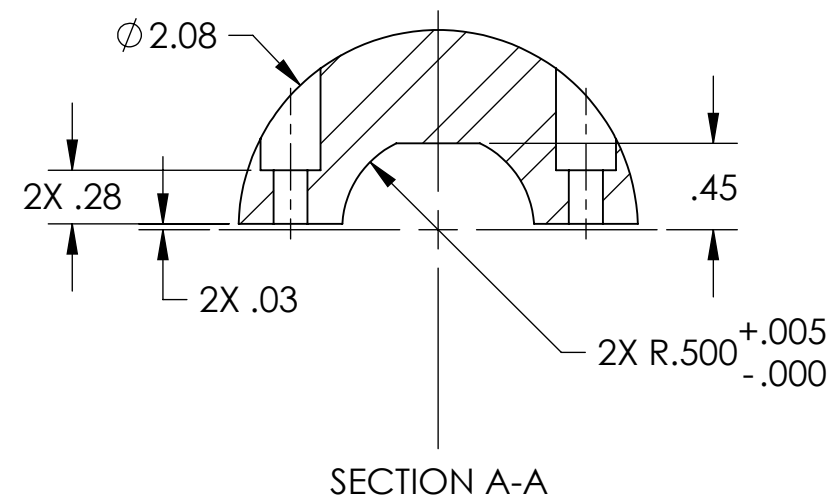
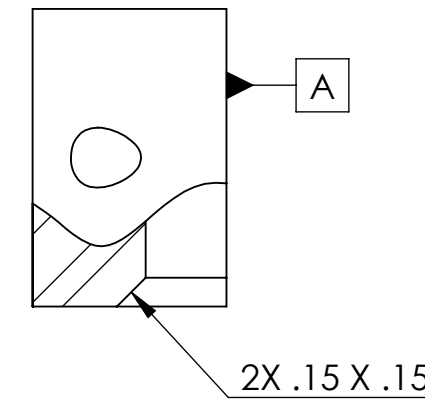
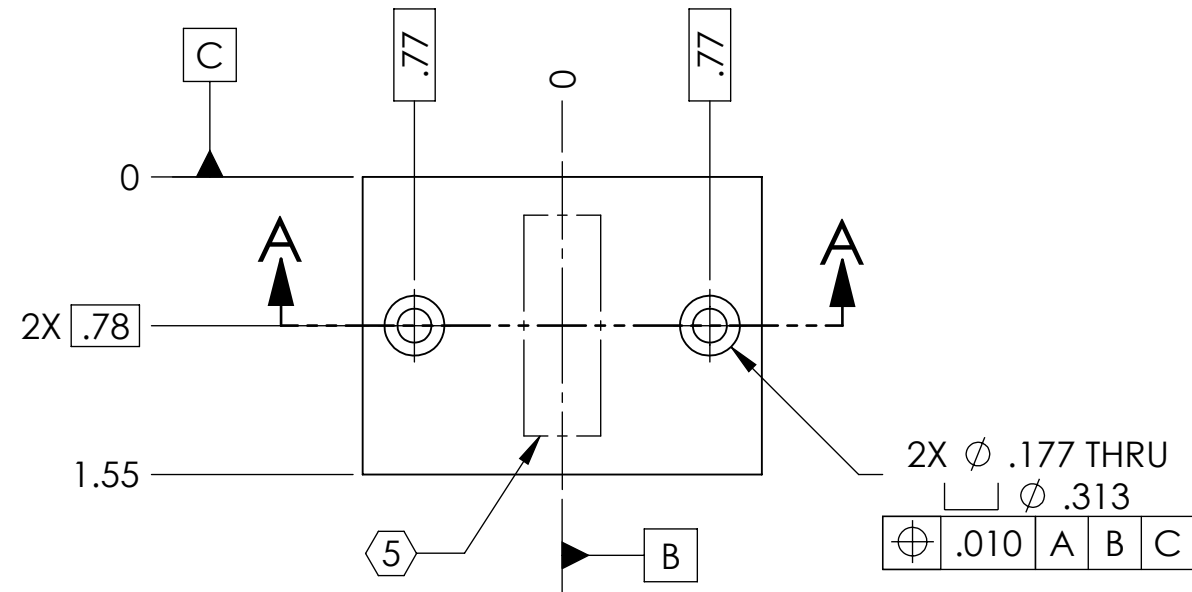


D080225_Advanced_LIGO_SUS_HLTS_Collar_Upper_500g_Intermediate_Mass_PART PDM REV: X-002, DRAWING PDM REV: X-006

NOTES CONTINUED:
 5 SCRIBE, ENGRAVE, OR MECHANICALLY STAMP (NO INKS OR DYES) DRAWING PART NUMBER AND REVISION ON NOTED SURFACE FOLLOWED ON THE NEXT LINE BY A THREE DIGIT SERIAL NUMBER. SERIAL NUMBERS START AT 001 FOR THE FIRST ARTICLE AND PROCEED CONSECUTIVELY. USE .07" HIGH CHARACTERS. EXAMPLE: DXXXXX-VY, S/N 001.
 500g UPPER HALF
 A VIBRATORY TOOL MAY BE USED.

REV.	DATE	DCN #	DRAWING TREE #
v1	22 JUN 2009	E0900173	E080191
-	-	-	-
-	-	-	-



NOTES AND TOLERANCES: (UNLESS OTHERWISE SPECIFIED)				LIGO CALIFORNIA INSTITUTE OF TECHNOLOGY MASSACHUSETTS INSTITUTE OF TECHNOLOGY		PART NAME	
DIMENSIONS ARE IN INCHES TOLERANCES: .XX ± .01 .XXX ± .005 ANGULAR ± 0.5°				1. INTERPRET DRAWING PER ASME Y14.5-1994. 2. REMOVE ALL SHARP EDGES, R.02 MIN. 3. DO NOT SCALE FROM DRAWING. 4. ALL MACHINING FLUIDS SHALL BE WATER SOLUBLE AND FREE OF SULFUR, CHLORINE AND SILICONE, SUCH AS CINCINNATI MILACRON'S CIMTECH 410.		COLLAR, UPPER, 500g	
						SYSTEM ADVANCED LIGO	SUB-SYSTEM SUS
MATERIAL 304 SSSL				FINISH 32 µinch		NEXT ASSY INT. MASS CHANGER	
				CHECKER M. MEYER		24 JUN 2009	
				APPROVAL		SCALE: 1:1 PROJECTION: SHEET 1 OF 1	