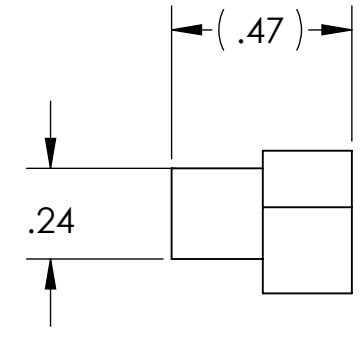
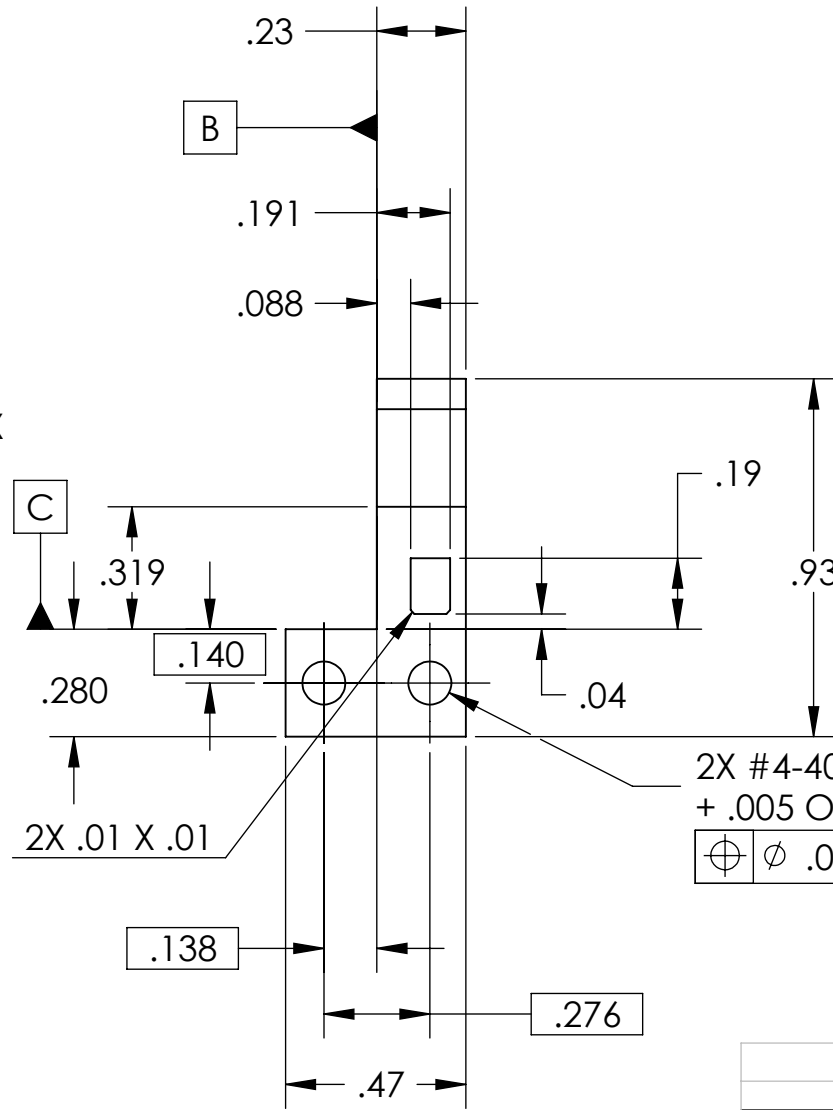
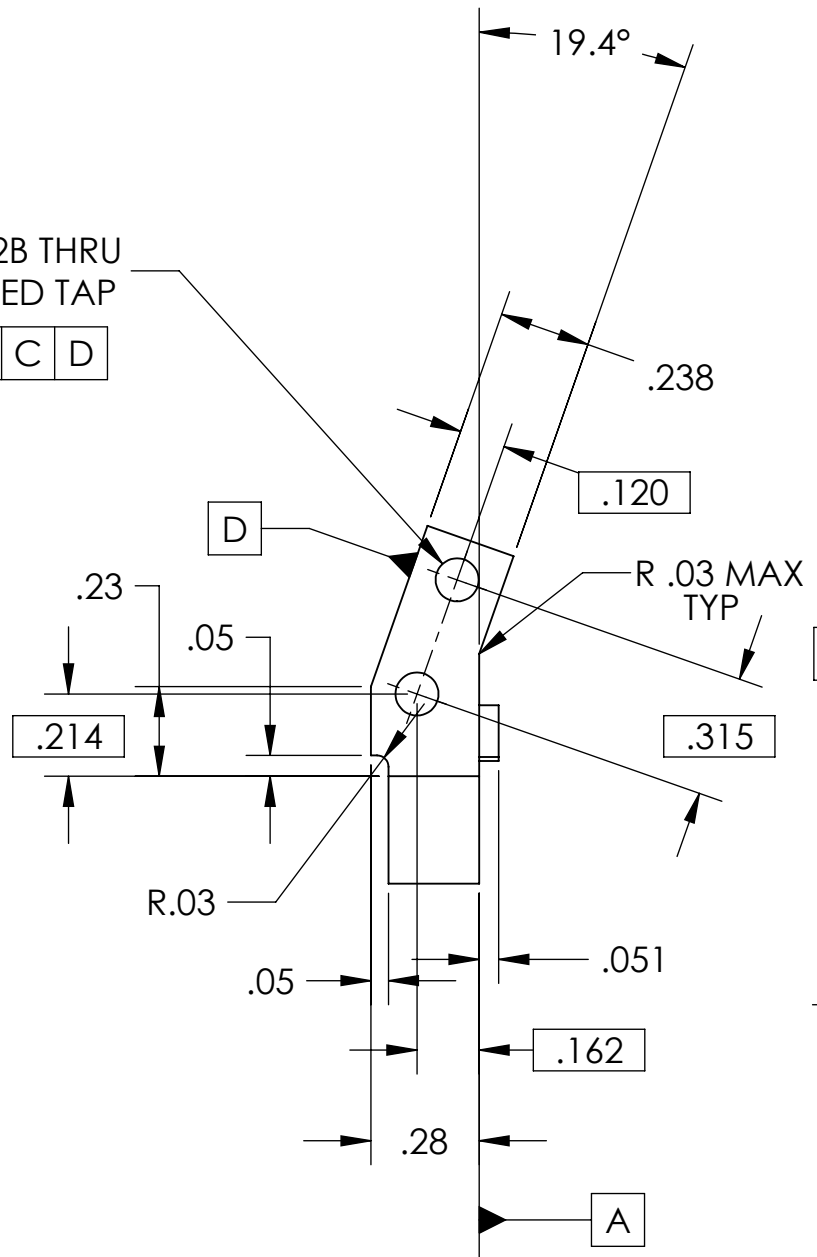


REV.	DATE	DCN #	DRAWING TREE #
A	01 AUG 2008	E080418-00	E080191-01-D



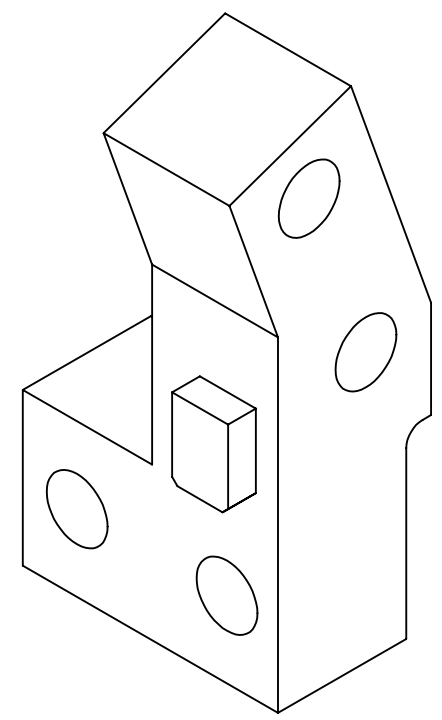
2X #4-40UNC-2B THRU  
+ .005 OVERSIZED TAP

$\oplus$	$\phi$	.005	B	C	D
----------	--------	------	---	---	---


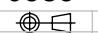


2X #4-40UNC-2B THRU  
+ .005 OVERSIZED TAP

$\oplus$	$\phi$	.005	A	B	C
----------	--------	------	---	---	---



SCALE: 4:1

NOTES: (UNLESS OTHERWISE SPECIFIED)		PARTS LIST	
1. DO NOT SCALE FROM DRAWING.	DIMENSIONS ARE IN INCHES	 CALIFORNIA INSTITUTE OF TECHNOLOGY MASSACHUSETTS INSTITUTE OF TECHNOLOGY IGR, GLASGOW UNIVERSITY GEO 600 GROUP	
2. REMOVE ALL SHARP EDGES, R.02 MAX.	TOLERANCES: .XX ± 0.01 .XXX ± 0.005		
3. ALL MACHINING FLUIDS SHALL BE WATER SOLUBLE AND FREE OF SULFUR, CHLORINE AND SILICONE.	ANGULAR ± 0.5°	SYSTEM	ADVANCED LIGO
4. BAG ALL ITEMS INDIVIDUALLY AND TAG EACH BAG WITH THE PART NUMBER, REVISION AND QUANTITY REQUIRED. EXAMPLE: D070585-A QTY: TBD	MATERIAL 304, 316 OR 302 SSSL	SUB-SYSTEM	SUS
5. 'L' AND 'LN' VARIANTS OF 304 OR 316 TYPE STAINLESS STEEL ARE ACCEPTABLE.	FINISH 32 μ inch	NEXT ASSY	INTERMEDIATE WIRE ASSEMBLY
6. 303 TYPE STAINLESS STEEL IS NOT ACCEPTABLE.		PART NAME	UPPER CLAMP, INTERMEDIATE WIRE, INSIDE
		SIZE	DWG. NO. D070585
		SCALE: NTS	PROJECTION: 
			SHEET 1 OF 1