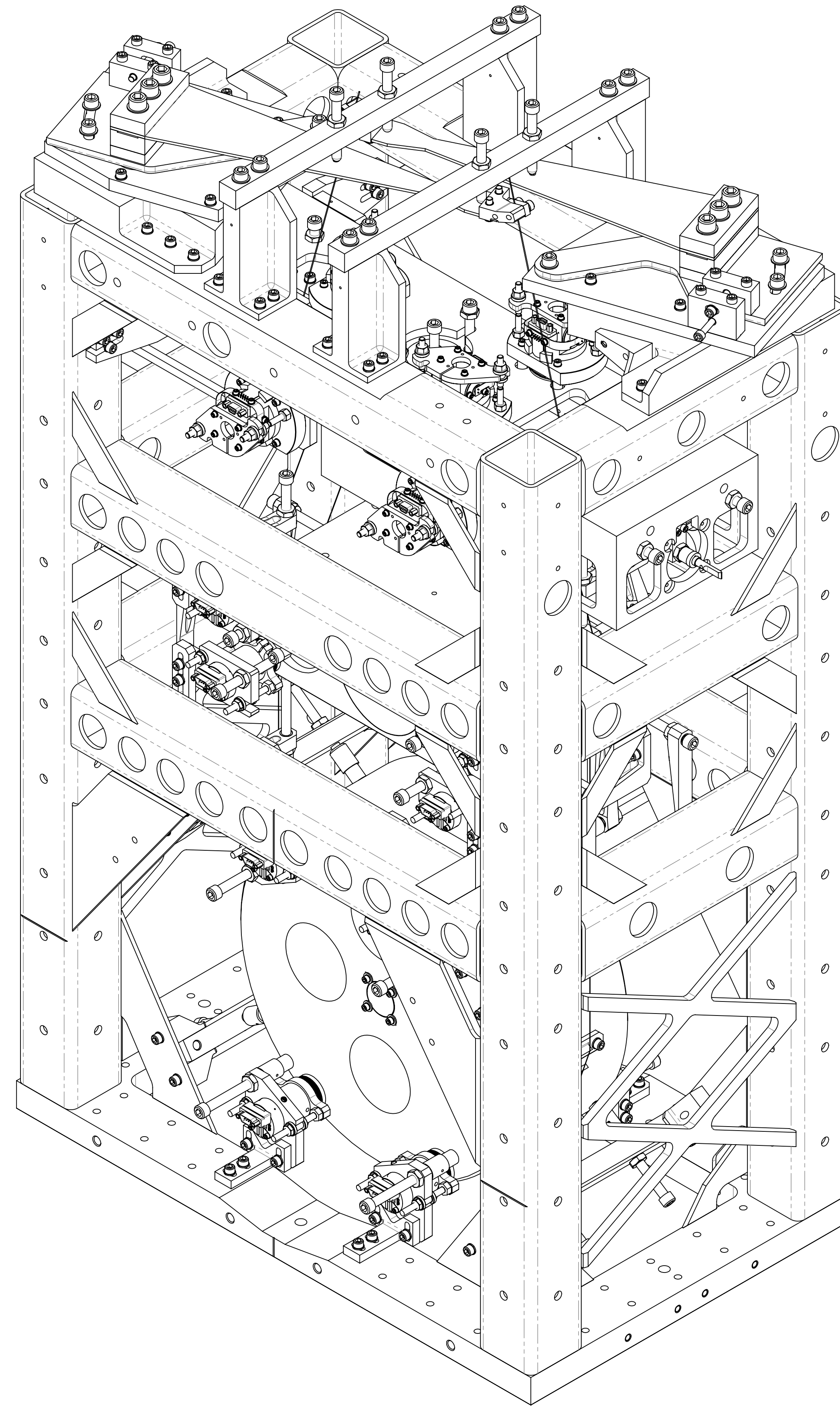
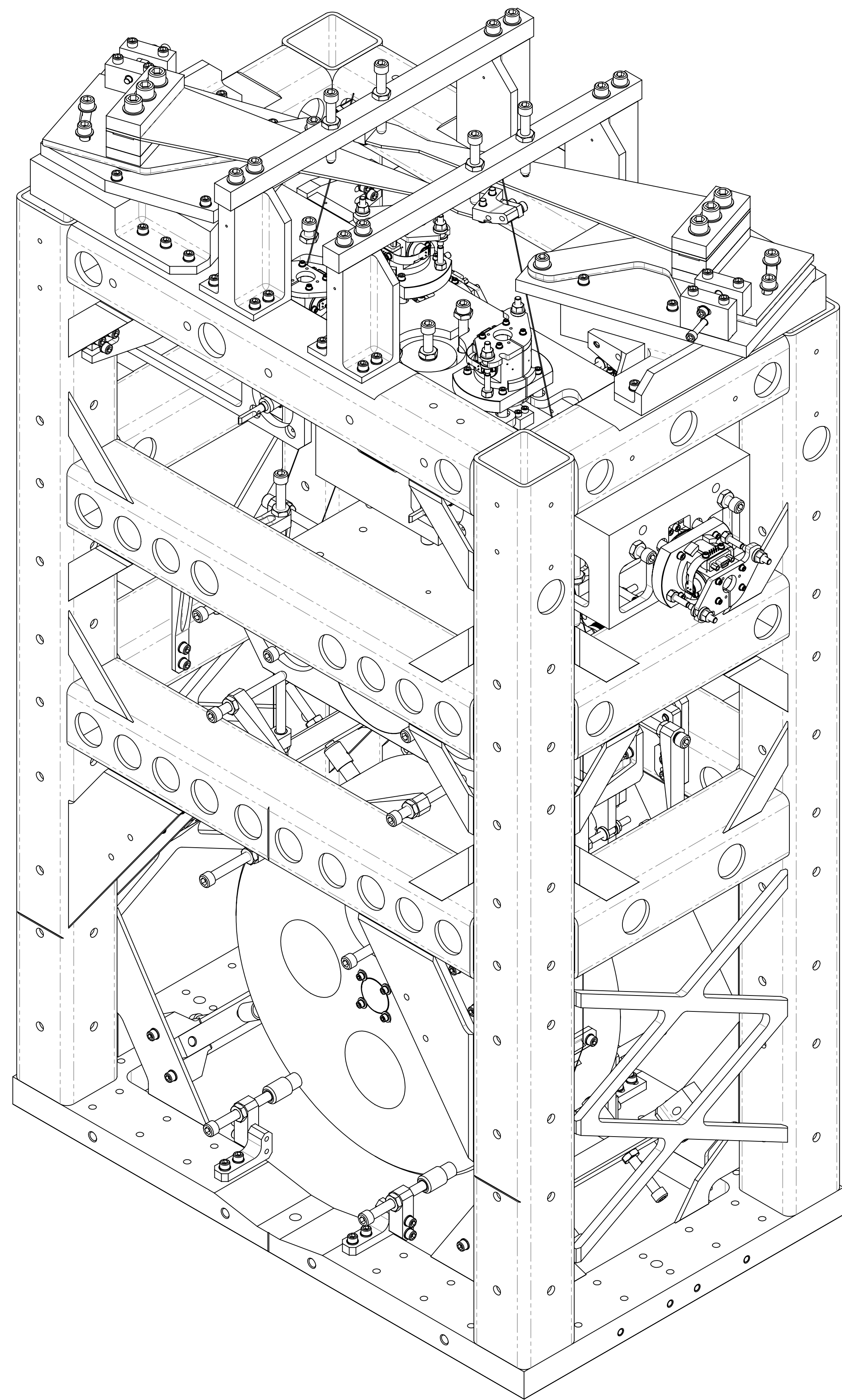


REV.	DATE	DCN #	DRAWING TREE #
v1	02 DEC 2009	E0900446	E080191
v2	05 MAR 2011	E1100228	E080191
-	-	-	-



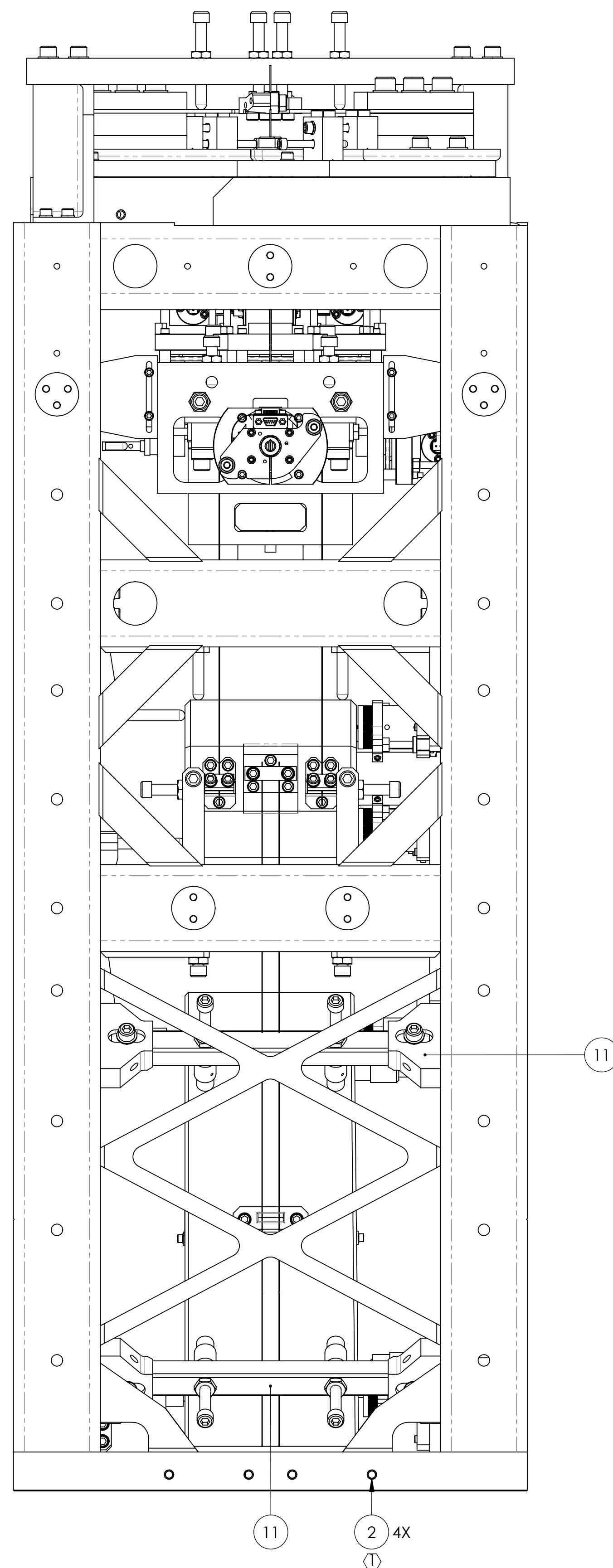
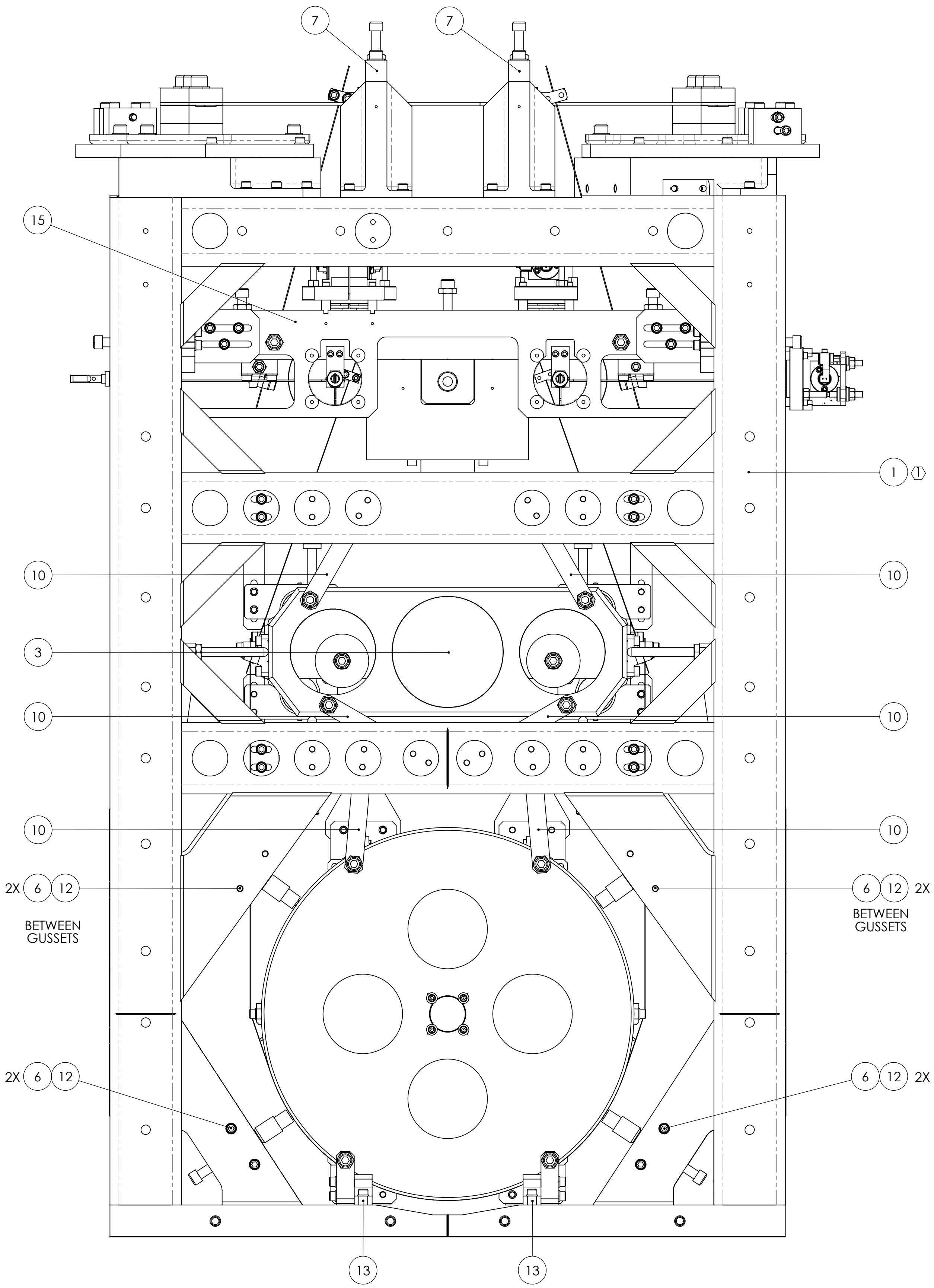
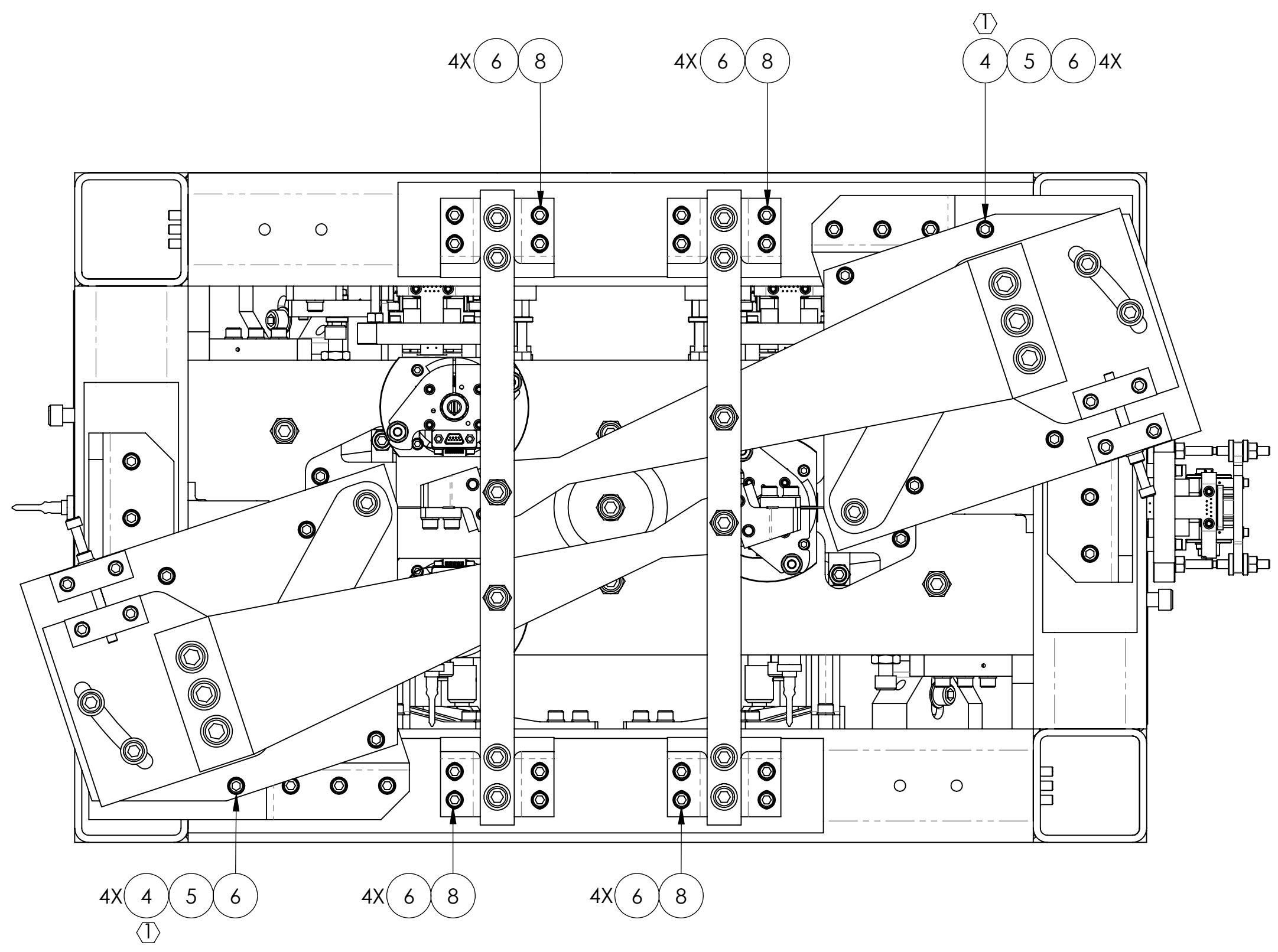
ITEM NO.	PART NUMBER	DESCRIPTION	MATERIAL	REQ	SPARE	TOTAL
20	D0901553	LOWER AOSEM ALIGNMENT ASSY, BOTTOM MASS	N/A	2	0	2
19	D0901552	UPPER AOSEM ALIGNMENT ASSY, BOTTOM MASS	N/A	2	0	2
18	D0901551	LOWER AOSEM ALIGNMENT ASSY, INT. MASS	N/A	2	0	2
17	D0902024	UPPER AOSEM ALIGNMENT ASSY, INT. MASS	N/A	2	0	2
16	-	SCREW, SOCKET HEAD CAP, #8-32 UNC-2A X 0.75 LONG	Ag-PLATED 300 S5TL	12	3	15
15	D080677	COIL HOLDER ASSY	N/A	1	0	1
14	-	SCREW, SOCKET HEAD CAP, #8-32 UNC-2A X 0.5 LONG, VENTED	Ag-PLATED 300 S5TL	8	2	10
13	D1002821	EARTHQUAKE STOP ASSY, BOTTOM MASS, LOWER	N/A	2	0	2
12	-	SCREW, SOCKET HEAD CAP, #8-32 UNC-2A X 0.5 LONG	300 S5TL	16	4	20
11	D070319	EARTHQUAKE STOP ASSY, BRIDGE	N/A	4	1	5
10	D080726	EARTHQUAKE STOP ASSY, LONG MOUNT	N/A	10	2	12
9	D080727	EARTHQUAKE STOP ASSY, LONG BRACKET	N/A	8	2	10
8	-	SCREW, SOCKET HEAD CAP, #8-32 UNC-2A X 0.5 LONG	Ag-PLATED 300 S5TL	64	16	80
7	D070308	TOP BLADE GUARD ASSY	N/A	2	0	2
6	-	WASHER, FLAT, VENTED, #8 (U-C COMPONENTS P/N WFV-08 OR EQUIVALENT)	300 S5TL	108	22	130
5	-	SCREW, SOCKET HEAD CAP, #8-32 UNC-2A X 0.75 LONG	300 S5TL	8	2	10
4	1185-2E246	HELICOIL, #8-32 X 0.246 LONG (1)	NITRONIC 60	8	4	12
3	D070332	HLTS SUSPENSION ASSY	N/A	1	0	1
2	1185-2E1492	HELICOIL, #8-32 X 0.492 LONG (1)	NITRONIC 60	8	4	12
1	D070537	STRUCTURE, HLTS (1)	N/A	1	0	1

NOTES AND TOLERANCES: (UNLESS OTHERWISE SPECIFIED)  
 (1) HELICOILS TO BE INSTALLED INTO ITEM NO. 1 BY LIGO AFTER ALL PARTS ARE CLEANED AND BAKED.  
 2. PARTS TO BE ASSEMBLED ACCORDING TO E080208 HLTS ASSEMBLY SPECIFICATION.

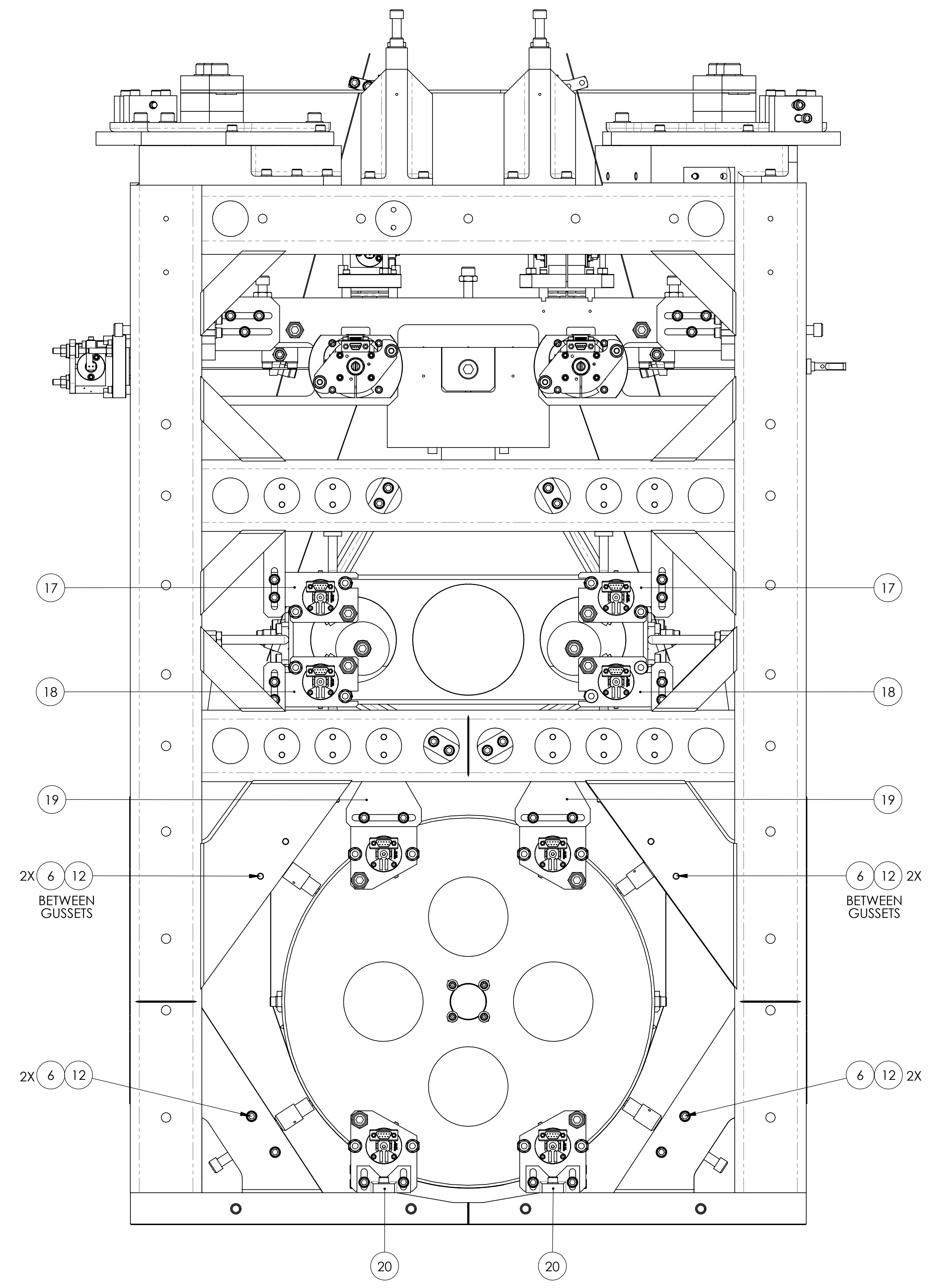
MATERIAL N/A FINISH N/A μinch

CALIFORNIA INSTITUTE OF TECHNOLOGY MASSACHUSETTS INSTITUTE OF TECHNOLOGY		<b>HLTS OVERALL ASSEMBLY</b>	
SYSTEM <b>ADVANCED LIGO</b>	SUB-SYSTEM <b>SUS</b>	DESIGNER D. BRIDGES 23 JUN 2011	SIZE DWG. NO. <b>E D070447</b>
DRAFTER D. BRIDGES 23 JUN 2011	CHECKER B. MOORE 24 JUN 2011	APPROVAL	REV. <b>v2</b>
NEXT ASSY <b>HLTS OVERALL ASSY AND FIXTURES</b>		SCALE: 1:2	PROJECTION:  SHEET 1 OF 4

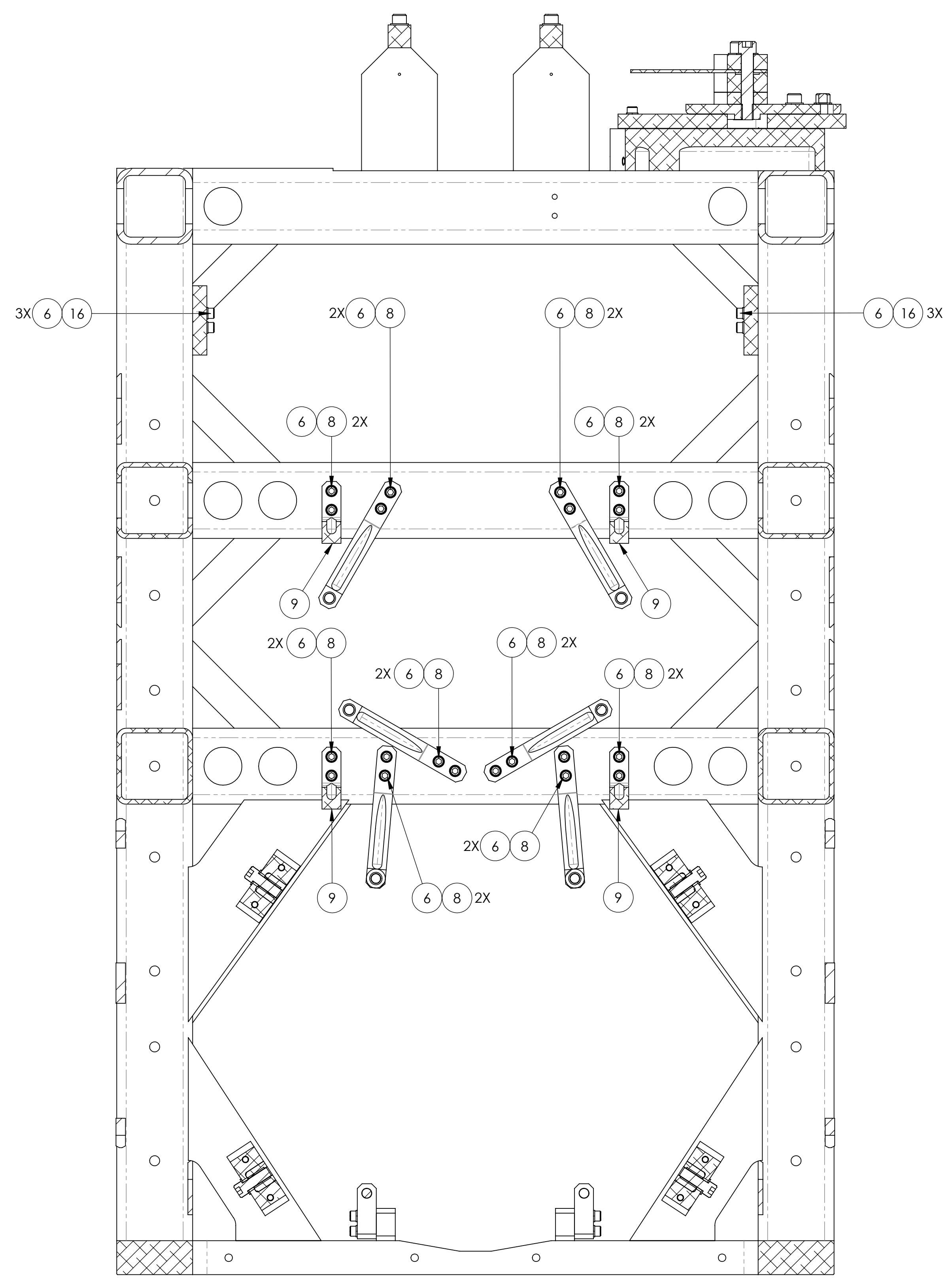
D070447 - ADVANCED LIGO SUB-SYSTEM OVERALL ASSEMBLY (1) - AND SUS PART FROM REV. V1.003 - DRAWING FROM REV. V1



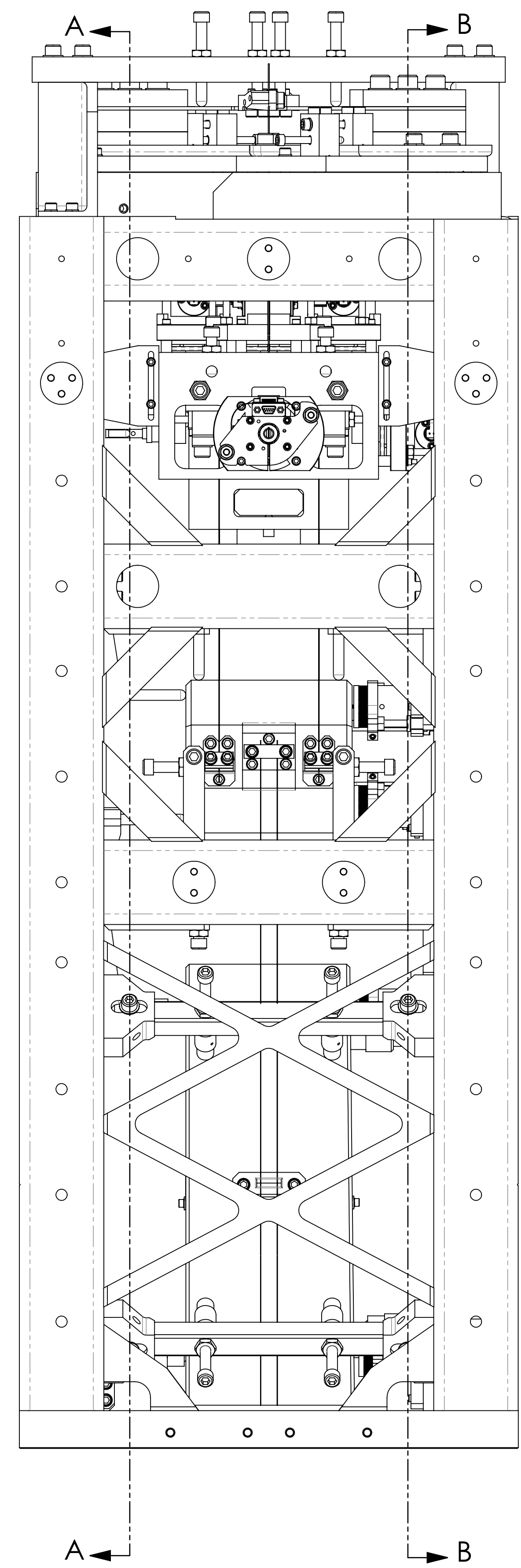
LEFT AND RIGHT SIDES



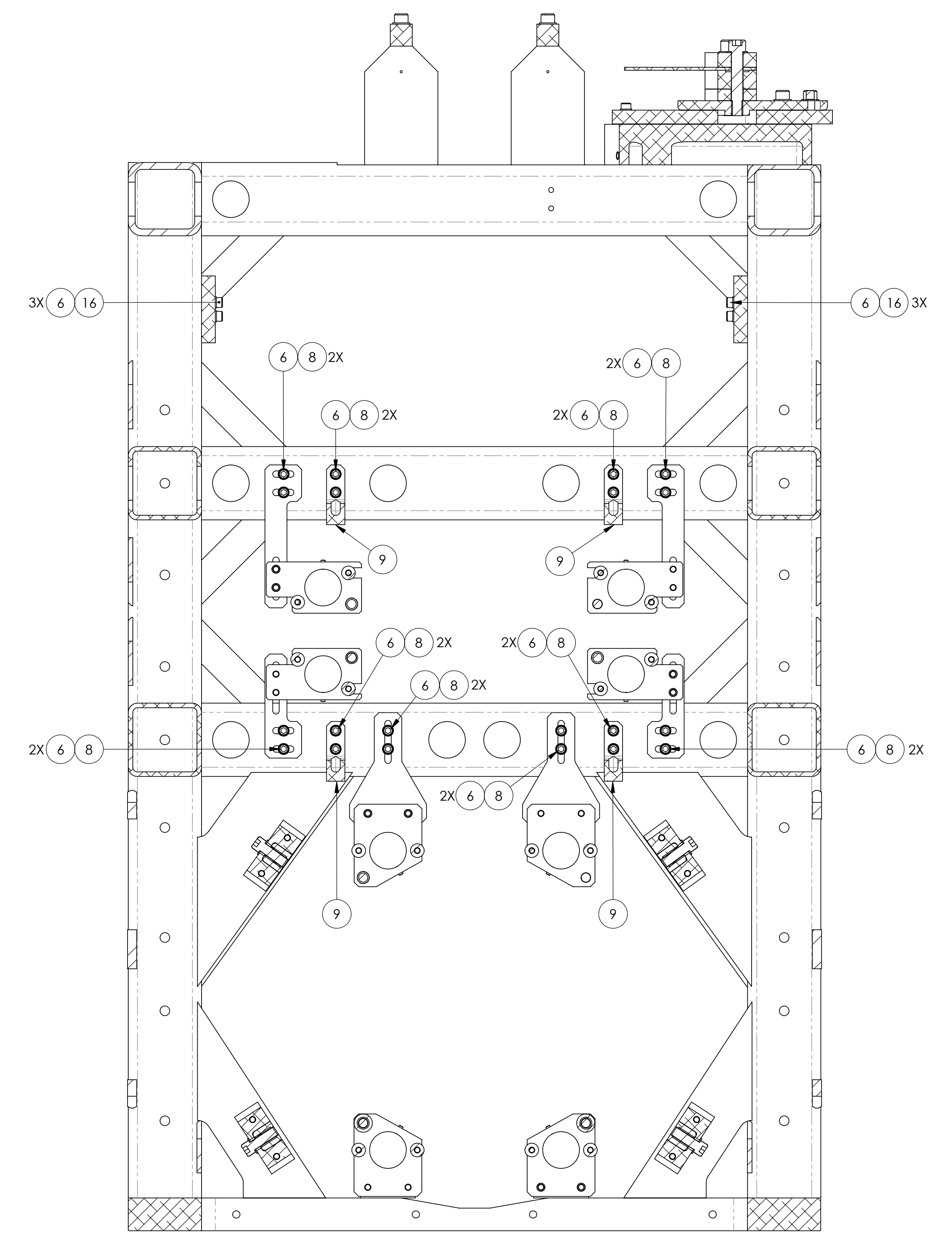
D070447-ADVANCED LIGO BY GENERAL ASSEMBLY STANDARDS PART FOR REV-V1000 DRAWING FOR REV-V1



SECTION A-A

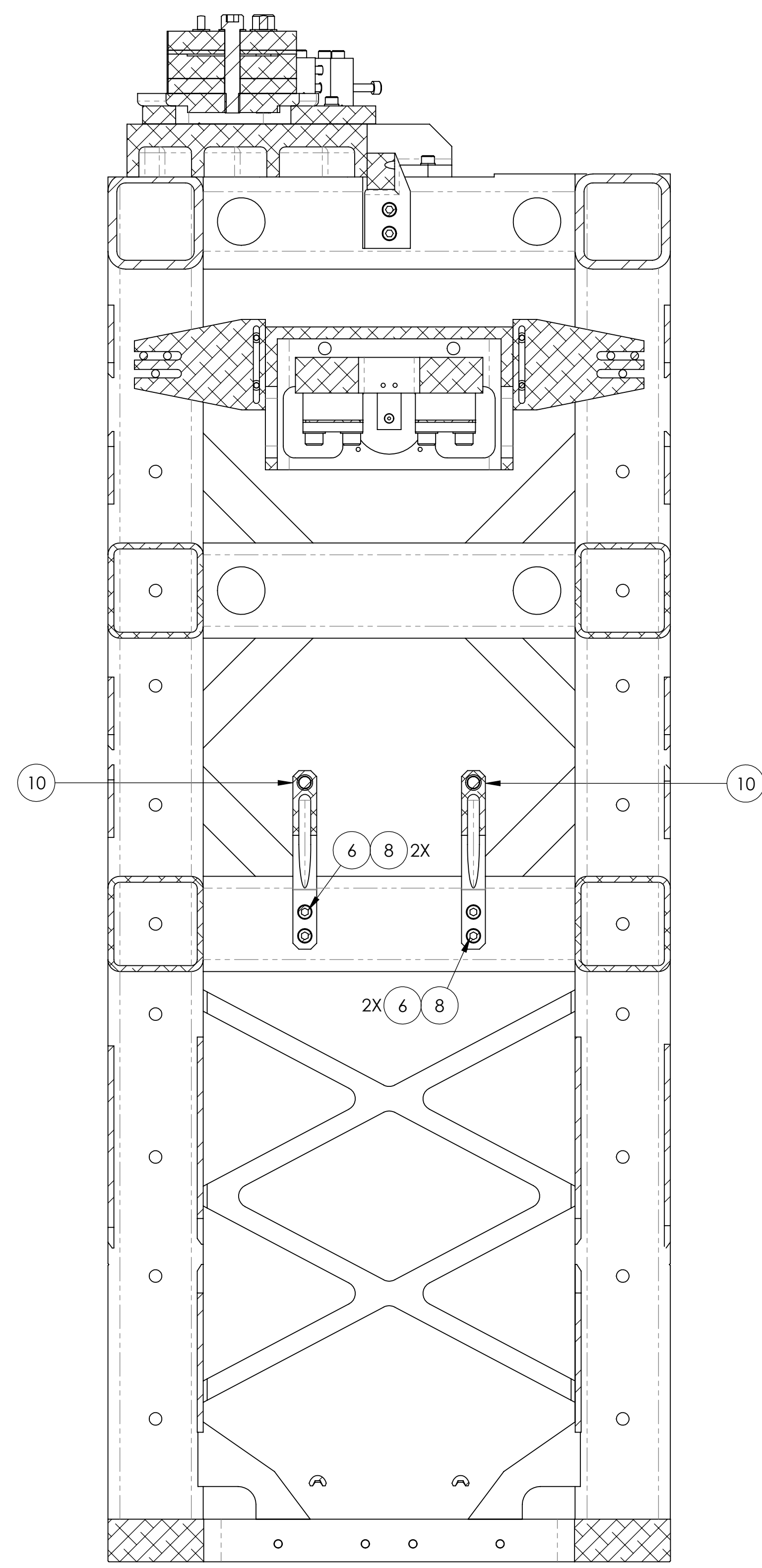


SECTION B-B

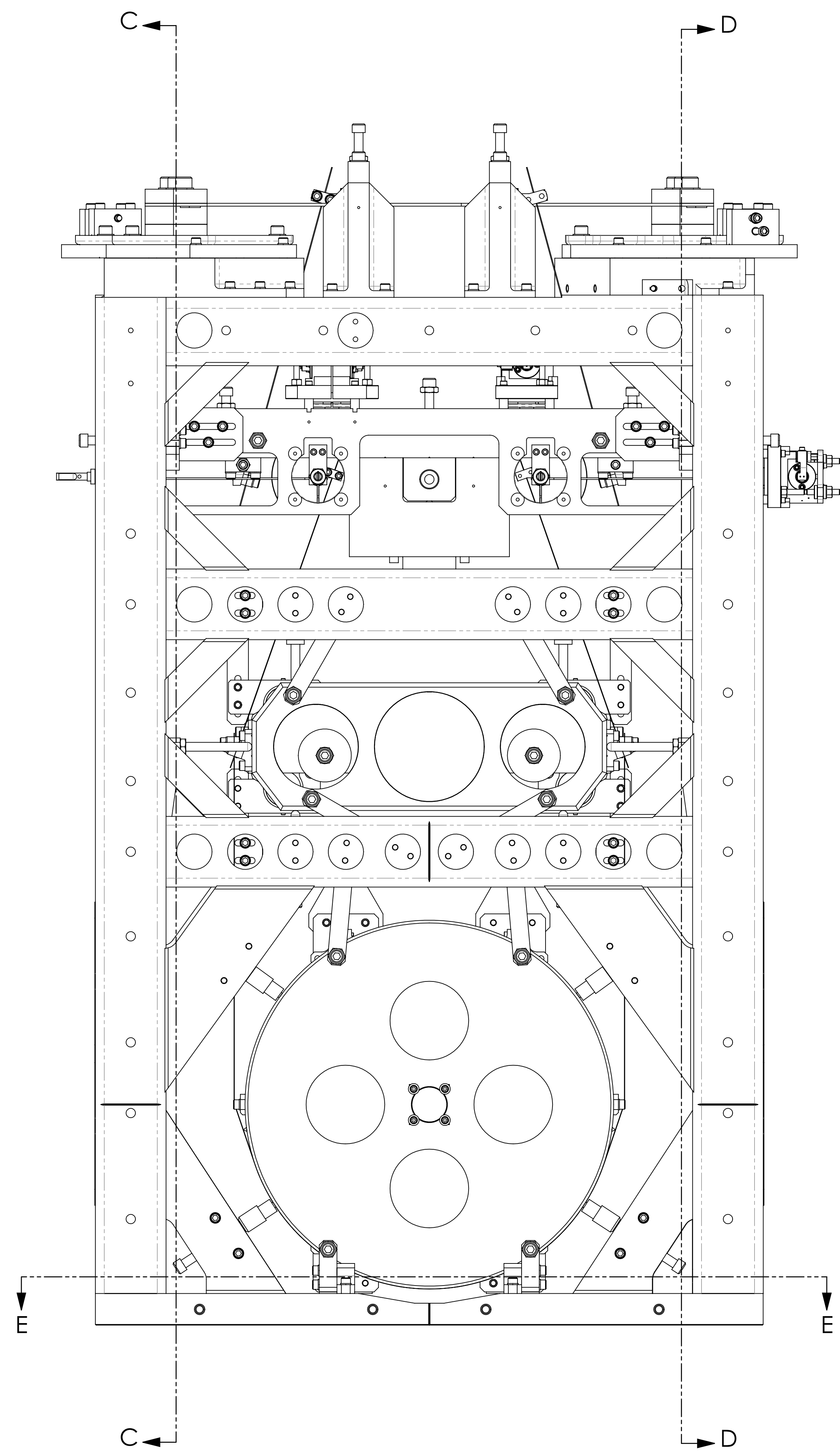


SECTION C-C

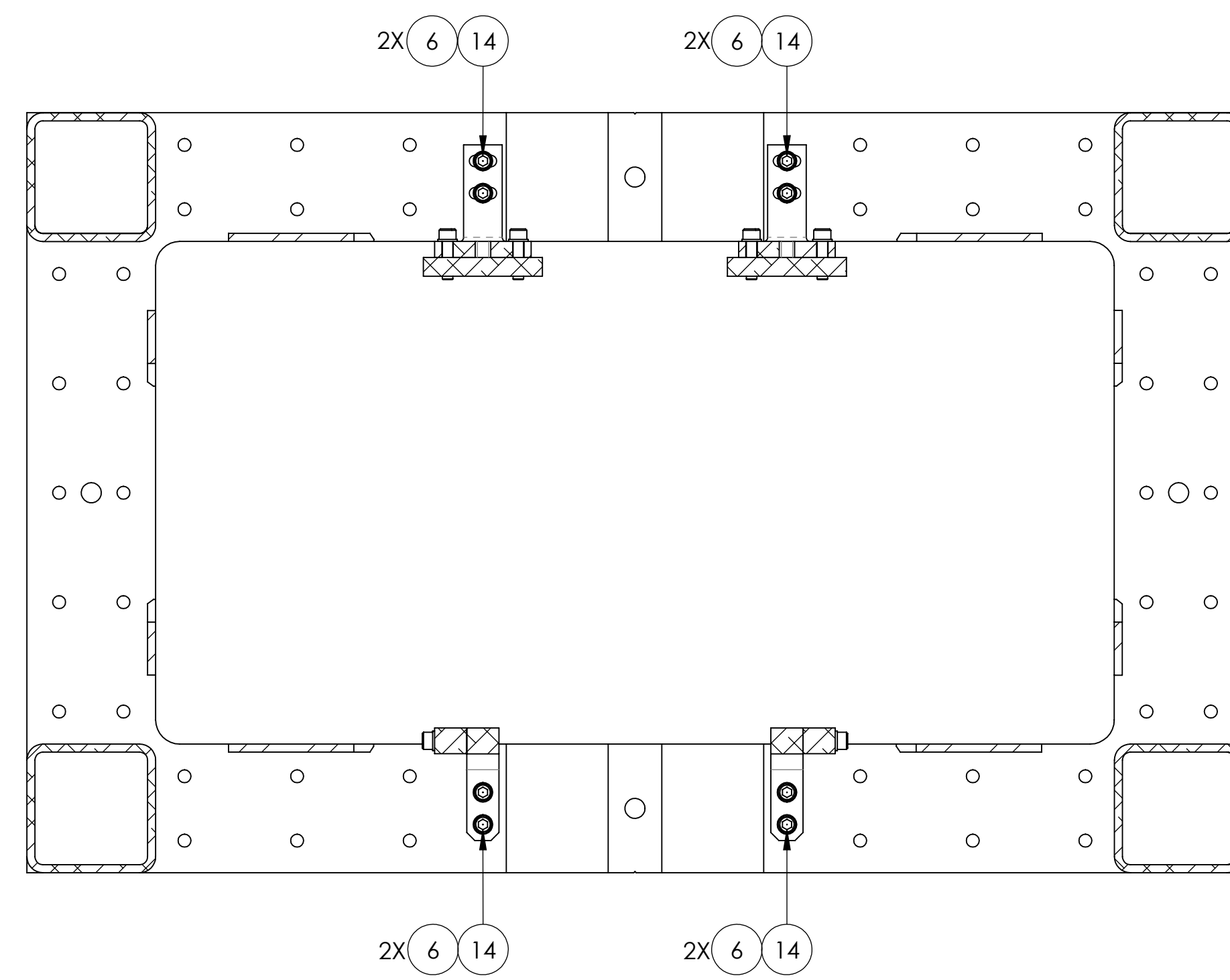
D:\DATA\ADVANCED\_LIGO\SERV\_GENERAL\_ASSEMBLY\STANDS\US\_PATFORM\REV\_V1\001\_DRAWING\_PDM\_REV\_V1



SECTION C-C



SECTION D-D



SECTION E-E