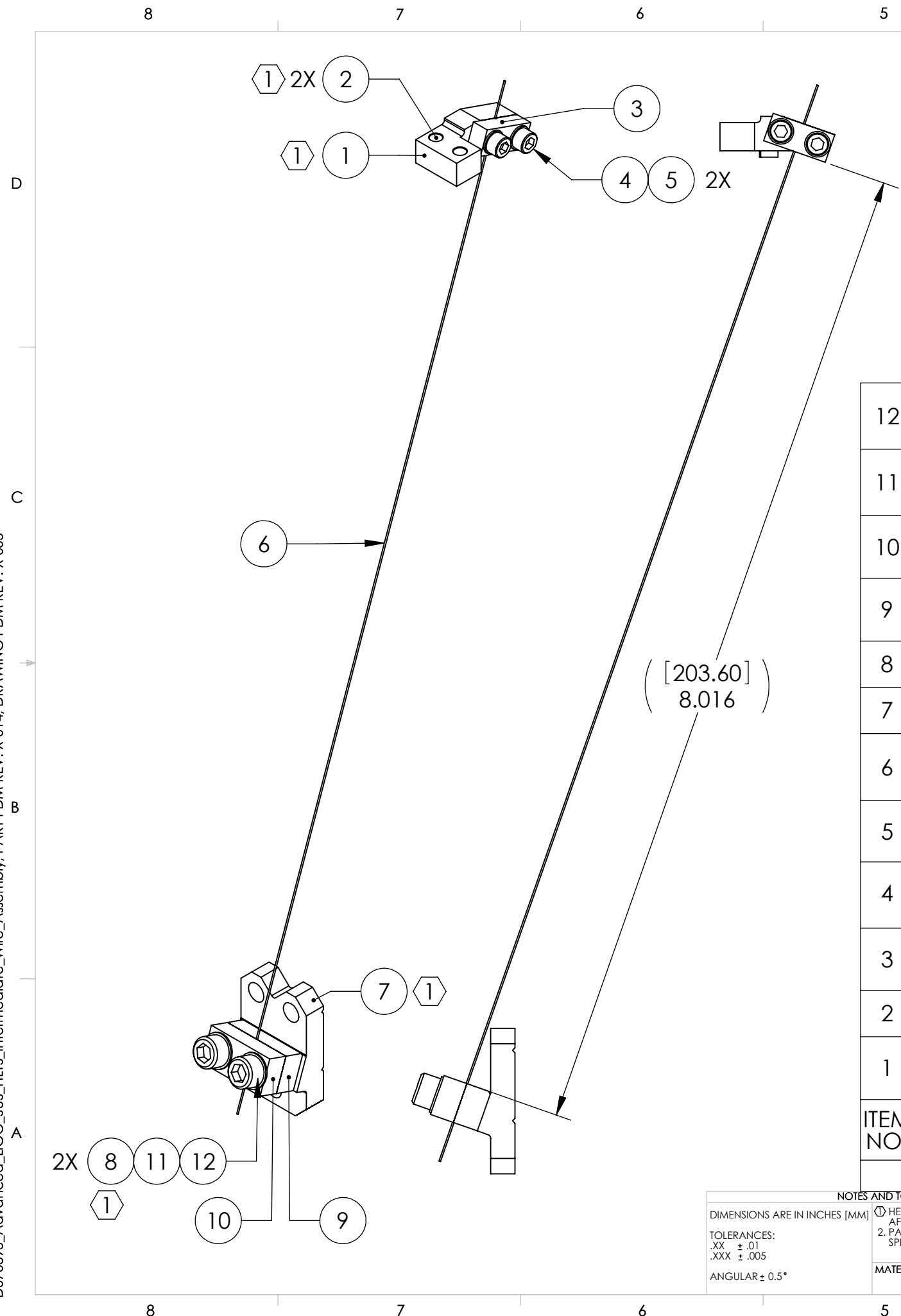


D070393_Advanced_LIGO_SUS_HLTS_Intermediate_Wire_Assembly, PART PDM REV: X-014, DRAWING PDM REV: X-005

REV.	DATE	DCN #	DRAWING TREE #
v1	24 JUN 2009	E0900176	E080191
-	-	-	-
-	-	-	-



ITEM NO.	PART NUMBER	DESCRIPTION	MATERIAL	REQ	SPARE	TOTAL
12	-	WASHER, FLAT, #8 (NAS 620-C8L OR EQUIVALENT)	300 SSTL	2	1	3
11	-	SCREW, SOCKET HEAD CAP, #8-32 UNC-2A X 0.625 LONG	300 SSTL	2	1	3
10	D070406	LOWER CLAMP, INT. WIRE, OUTSIDE	304, 316 OR 302 SSTL	1	0	1
9	D070405	LOWER CLAMP, INT. WIRE, INSIDE	304, 316 OR 302 SSTL	1	0	1
8	1185-2EN164	HELICOIL, #8-32 X 0.164 LONG (1)	NITRONIC 60	2	2	4
7	D030149	BREAKOFF, INT. WIRE (1)	6061-T6 Al	1	0	1
6	-	INTERMEDIATE WIRE (Ø 0.0134)	STEEL MUSIC WIRE	A/R	0	0
5	-	WASHER, FLAT, #4 (NAS 620-C4L OR EQUIVALENT)	300 SSTL	2	1	3
4	-	SCREW, SOCKET HEAD CAP, #4-40 UNC-2A X 0.375 LONG	Ag-PLATED 300 SSTL	2	1	3
3	D070394	UPPER CLAMP, INT. WIRE, OUTSIDE	304, 316 OR 302 SSTL	1	0	1
2	1185-04EN224	HELICOIL, #4-40 X 0.224 LONG (1)	NITRONIC 60	2	2	4
1	D070585	UPPER CLAMP, INT. WIRE, INSIDE (1)	304, 316 OR 302 SSTL	1	0	1

PARTS LIST

NOTES AND TOLERANCES: (UNLESS OTHERWISE SPECIFIED)
 (1) HELICOILS TO BE INSTALLED INTO ITEM NO. 1 AND ITEM NO. 7 BY LIGO AFTER ALL PARTS ARE CLEANED AND BAKED.
 2. PARTS TO BE ASSEMBLED ACCORDING TO E080208 HLTS ASSEMBLY SPECIFICATION, USING D0900630 HLTS INTERMEDIATE WIRE JIG.

DIMENSIONS ARE IN INCHES [MM]
 TOLERANCES:
 .XX ± .01
 .XXX ± .005
 ANGULAR ± 0.5°

MATERIAL		FINISH		NEXT ASSY		PART NAME	
N/A		N/A µinch		HLTS SUSPENSION ASSY		INTERMEDIATE WIRE ASSY	

DESIGNER	D. BRIDGES	10 OCT 2008	SIZE	DWG. NO.	REV.
DRAFTER	D. BRIDGES	7 JUL 2009	B	D070393	v1
CHECKER	M. MEYER	8 JUL 2009	SCALE: 1:1 PROJECTION:		
APPROVAL			SHEET 1 OF 1		