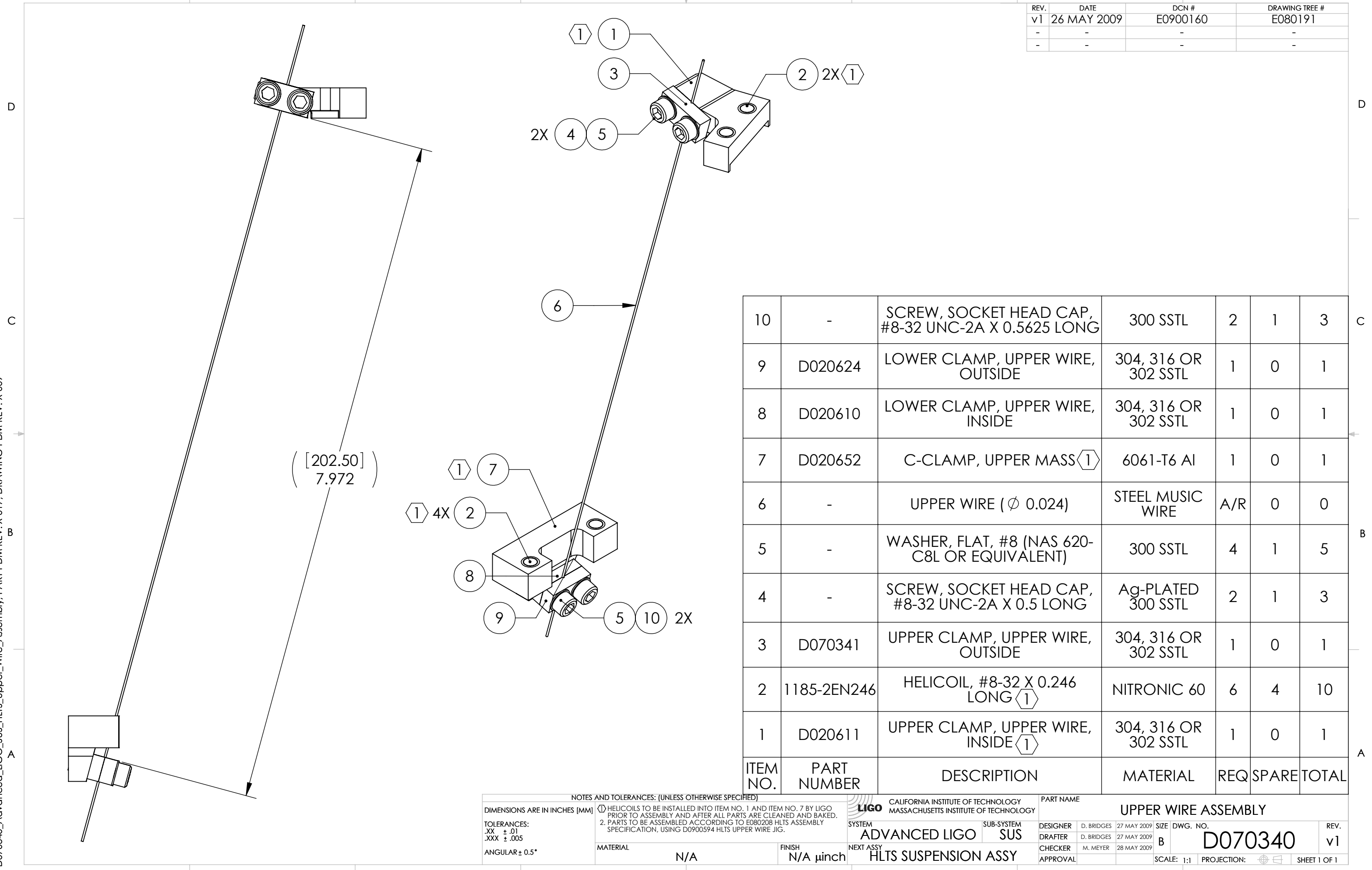


D070340_Advanced_LIGO_SUS_HLTS_Upper_Wire_Assembly, PART PDM REV: X-017, DRAWING PDM REV: X-009

| REV. | DATE | DCN # | DRAWING TREE # |
|------|-------------|----------|----------------|
| v1 | 26 MAY 2009 | E0900160 | E080191 |
| - | - | - | - |
| - | - | - | - |



| 10 | - | SCREW, SOCKET HEAD CAP, #8-32 UNC-2A X 0.5625 LONG | 300 SSSL | 2 | 1 | 3 |
|----------|-------------|--|----------------------|-----|-------|-------|
| 9 | D020624 | LOWER CLAMP, UPPER WIRE, OUTSIDE | 304, 316 OR 302 SSSL | 1 | 0 | 1 |
| 8 | D020610 | LOWER CLAMP, UPPER WIRE, INSIDE | 304, 316 OR 302 SSSL | 1 | 0 | 1 |
| 7 | D020652 | C-CLAMP, UPPER MASS (1) | 6061-T6 Al | 1 | 0 | 1 |
| 6 | - | UPPER WIRE (Ø 0.024) | STEEL MUSIC WIRE | A/R | 0 | 0 |
| 5 | - | WASHER, FLAT, #8 (NAS 620-C8L OR EQUIVALENT) | 300 SSSL | 4 | 1 | 5 |
| 4 | - | SCREW, SOCKET HEAD CAP, #8-32 UNC-2A X 0.5 LONG | Ag-PLATED 300 SSSL | 2 | 1 | 3 |
| 3 | D070341 | UPPER CLAMP, UPPER WIRE, OUTSIDE | 304, 316 OR 302 SSSL | 1 | 0 | 1 |
| 2 | 1185-2EN246 | HELICOIL, #8-32 X 0.246 LONG (1) | NITRONIC 60 | 6 | 4 | 10 |
| 1 | D020611 | UPPER CLAMP, UPPER WIRE, INSIDE (1) | 304, 316 OR 302 SSSL | 1 | 0 | 1 |
| ITEM NO. | PART NUMBER | DESCRIPTION | MATERIAL | REQ | SPARE | TOTAL |

NOTES AND TOLERANCES: (UNLESS OTHERWISE SPECIFIED)

(1) HELICOILS TO BE INSTALLED INTO ITEM NO. 1 AND ITEM NO. 7 BY LIGO PRIOR TO ASSEMBLY AND AFTER ALL PARTS ARE CLEANED AND BAKED.

2. PARTS TO BE ASSEMBLED ACCORDING TO E080208 HLTS ASSEMBLY SPECIFICATION, USING D0900594 HLTS UPPER WIRE JIG.

DIMENSIONS ARE IN INCHES [MM]

TOLERANCES:
 .XX ± .01
 .XXX ± .005
 ANGULAR ± 0.5°

MATERIAL: N/A
 FINISH: N/A µinch

CALIFORNIA INSTITUTE OF TECHNOLOGY
 MASSACHUSETTS INSTITUTE OF TECHNOLOGY
 SYSTEM: ADVANCED LIGO SUB-SYSTEM: SUS
 NEXT ASSY: HLTS SUSPENSION ASSY

PART NAME: UPPER WIRE ASSEMBLY

DESIGNER: D. BRIDGES 27 MAY 2009
 DRAFTER: D. BRIDGES 27 MAY 2009
 CHECKER: M. MEYER 28 MAY 2009
 APPROVAL:

SCALE: 1:1
 PROJECTION:

DWG. NO.: B D070340
 REV.: v1
 SHEET 1 OF 1