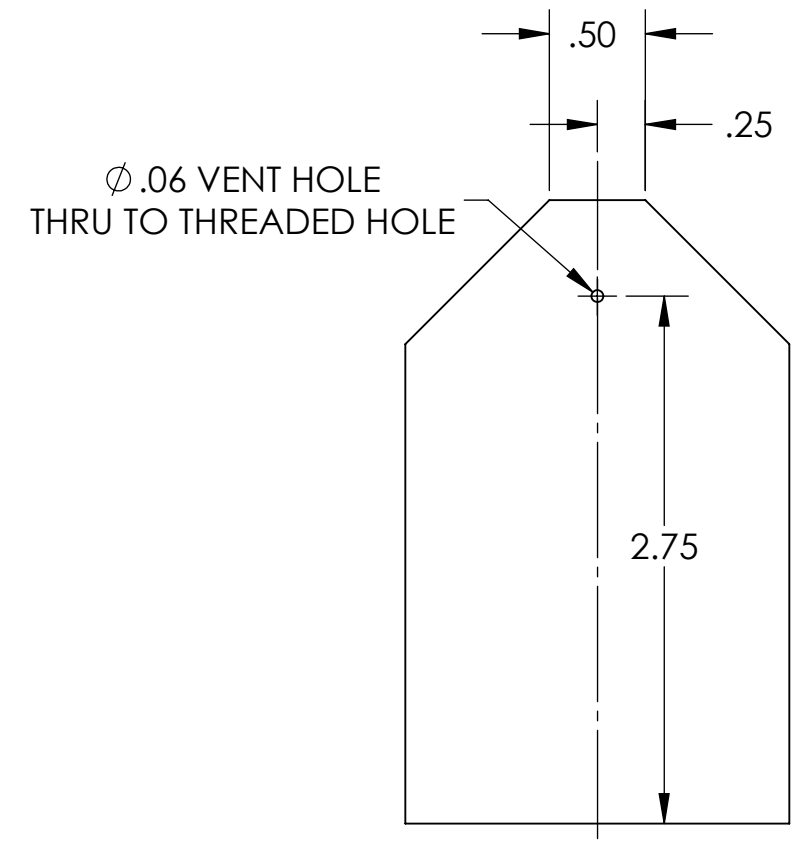
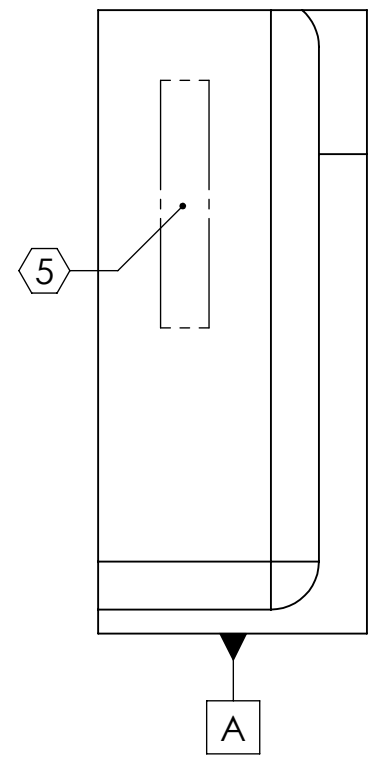
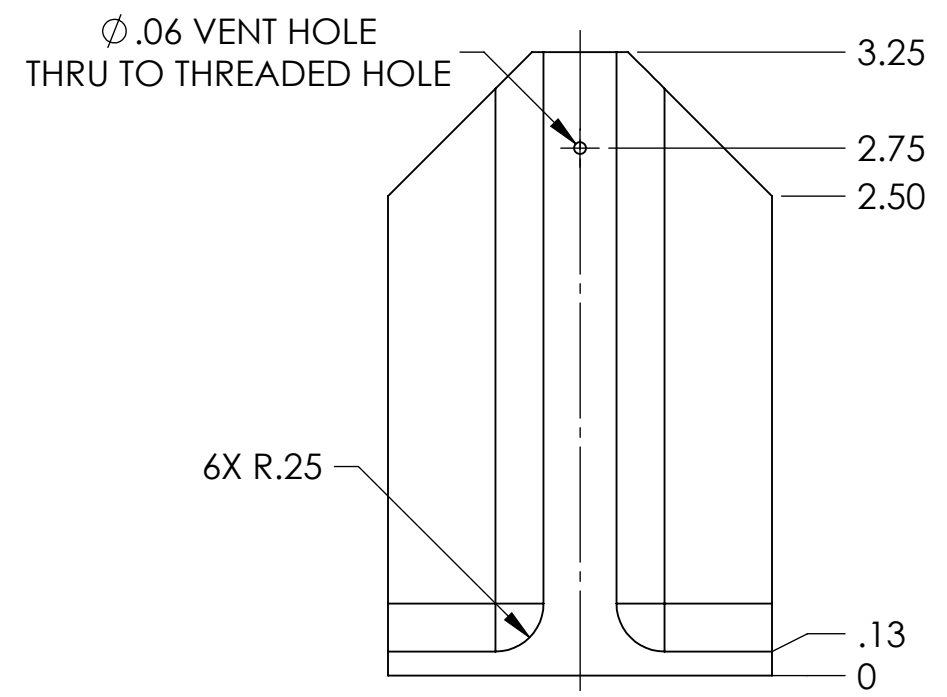
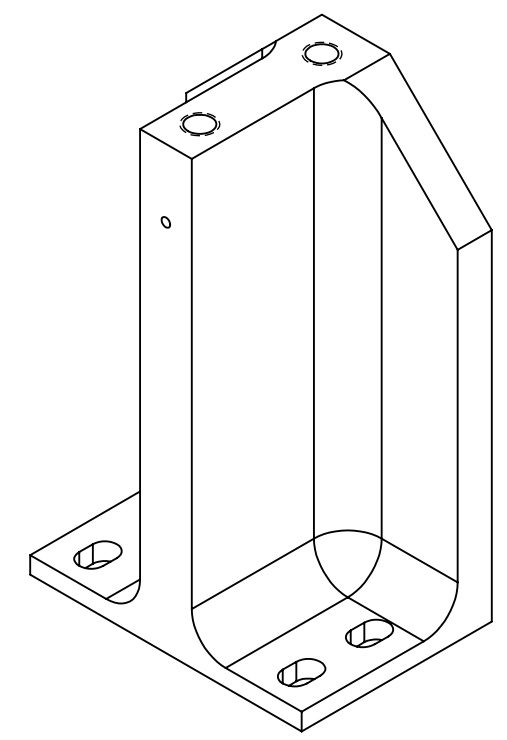
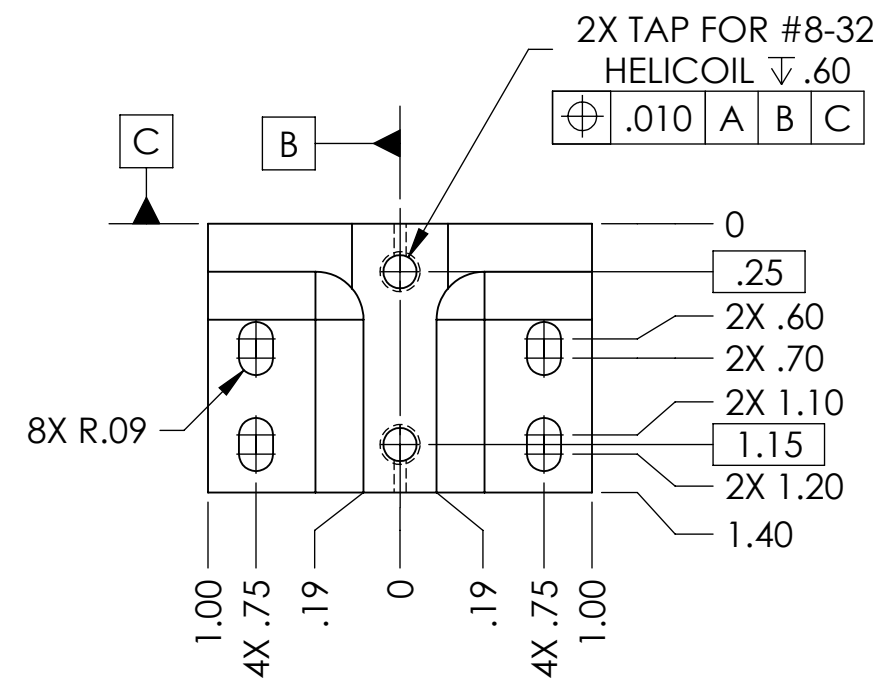


NOTES CONTINUED:  
 5 SCRIBE, ENGRAVE, OR MECHANICALLY STAMP (NO INKS OR DYES) DRAWING PART NUMBER AND REVISION ON NOTED SURFACE FOLLOWED ON THE NEXT LINE BY A THREE DIGIT SERIAL NUMBER. SERIAL NUMBERS START AT 001 FOR THE FIRST ARTICLE AND PROCEED CONSECUTIVELY. USE .07" HIGH CHARACTERS. EXAMPLE: DXXXXXX-VY, S/N 001. A VIBRATORY TOOL MAY BE USED.

REV.	DATE	DCN #	DRAWING TREE #
v1	26 MAY 2009	E0900159	E080191
-	-	-	-
-	-	-	-



NOTES AND TOLERANCES: (UNLESS OTHERWISE SPECIFIED)				CALIFORNIA INSTITUTE OF TECHNOLOGY MASSACHUSETTS INSTITUTE OF TECHNOLOGY		PART NAME	
DIMENSIONS ARE IN INCHES TOLERANCES: .XX $\pm$ .01 .XXX $\pm$ .005 ANGULAR $\pm$ 0.5°				1. INTERPRET DRAWING PER ASME Y14.5-1994. 2. REMOVE ALL SHARP EDGES, R.02 MIN. 3. DO NOT SCALE FROM DRAWING. 4. ALL MACHINING FLUIDS SHALL BE WATER SOLUBLE AND FREE OF SULFUR, CHLORINE AND SILICONE, SUCH AS CINCINNATI MILACRON'S CIMTECH 410.		<b>TOP BLADE GUARD RISER</b>	
MATERIAL		FINISH		SYSTEM		SUB-SYSTEM	
6061-T6 Al		32 $\mu$ inch		ADVANCED LIGO		SUS	
NEXT ASSY				DESIGNER		DATE	
TOP BLADE GUARD ASSY				G. SCARBOROUGH		28 APR 2008	
APPROVAL				DRAFTER		SIZE	
M. MEYER				D. BRIDGES		DWG. NO.	
03 JUN 2009				M. MEYER		B	
APPROVAL				CHECKER		REV.	
03 JUN 2009				M. MEYER		v1	
SCALE: 1:1				PROJECTION:		SHEET 1 OF 1	

D070309\_Advanced\_LIGO\_SUS\_HLTS\_Top\_Blade\_Guard\_Riser, PART PDM REV: X-006, DRAWING PDM REV: X-010