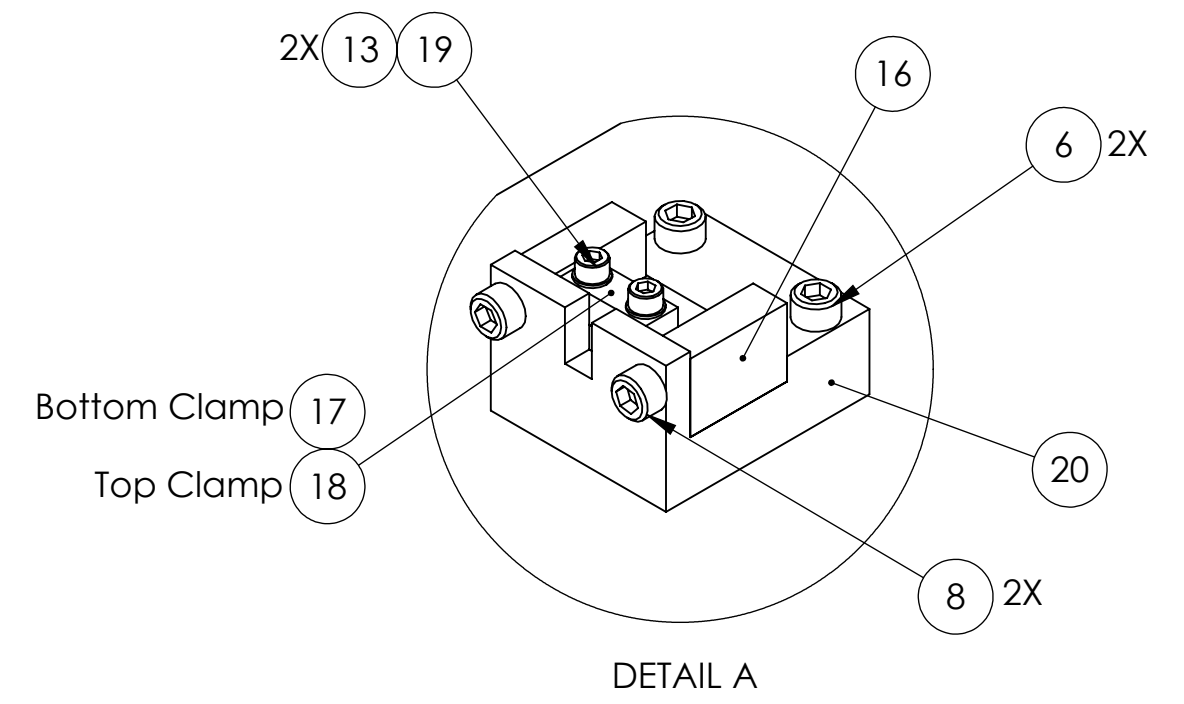
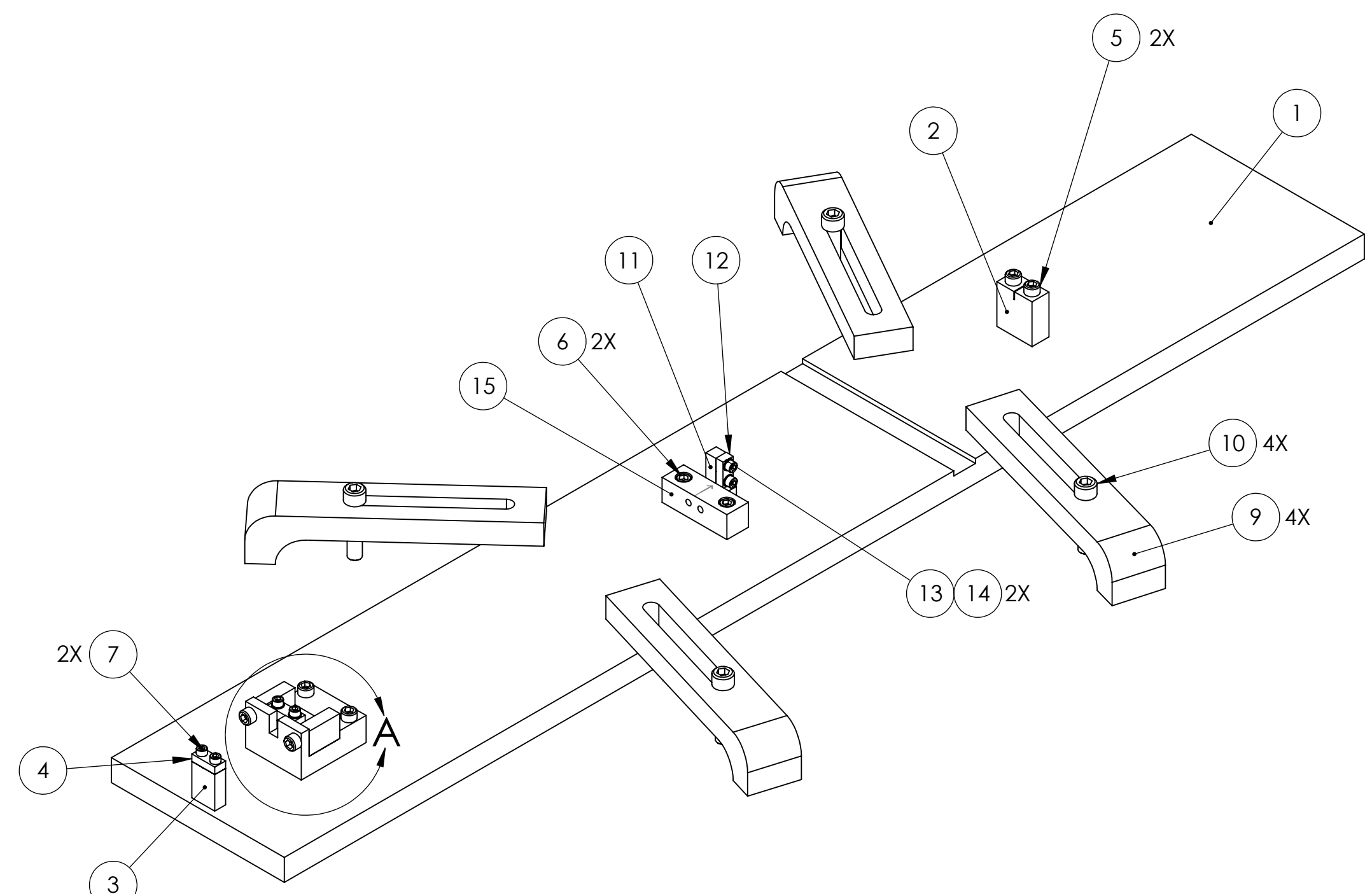


REV.	DATE	DCN #	DRAWING TREE #
A	28 MAR 2008	E080113-00	



ITEM NO.	REQ	SPARE	TOTAL	PART NUMBER	DESCRIPTION	MATERIAL
20	1		1	D070038	BAR JIG STEP PLATE	6061-T6-Al
19	2		2	-	SCREW, SOCKET HEAD CAP, #4-40 X 0.5 LG	300 SSSL
18	1		1	D020139	UPPER MASS WIRE CLAMP PLATE	300 SSSL
17	1		1	D020309	UPPER MASS WIRE CLAMP PLATE (WITH GROOVE)	300 SSSL
16	1		1	D070030	UPPER MASS C CLAMP	6061-T6-Al
15	1		1	D070023	ANGLED ATTACHMENT FOR UPPER BLADE WIRE CLAMP	6061-T6-Al
14	2		2	-	SCREW, SOCKET HEAD CAP, #4-40 X 0.3125 LG	300 SSSL, Ag-PLTD
13	4		4	NAS620-C4L	WASHER, FLAT, #4	300 SSSL
12	1		1	D030042	UPPER BLADE WIRE CLAMP PLATE	300 SSSL
11	1		1	D070022	TOP BLADE WIRE CLAMP	300 SSSL
10	4		4	-	SCREW, SOCKET HEAD CAP, 1/4-20 X 1.125 LG	300 SSSL
9	4		4	D980184	LOS CLAMP LONG	300 SSSL
8	2		2	-	SCREW, SOCKET HEAD CAP, #8-32 X 0.75 LG	300 SSSL
7	2		2	-	SCREW, SOCKET HEAD CAP, #4-40 X 1.25 LG	300 SSSL
6	4		4	-	SCREW, SOCKET HEAD CAP, #8-32 X 0.625 LG	300 SSSL
5	2		2	-	SCREW, SOCKET HEAD CAP, #8-32 X 1.125 LG	300 SSSL
4	1		1	D020380	WIRE START CLAMP UPPER	6061-T6-Al
3	1		1	D020540	WIRE START MATCHED HEIGHT (GROOVED CLAMP)	6061-T6-Al
2	1		1	D020440	UPPER WIRE HEIGHT BALANCE	6061-T6-Al
1	1		1	D080121	BAR JIG (UPPER AND INT. WIRE)	6061-T6-Al

NOTES: (UNLESS OTHERWISE SPECIFIED)

- DO NOT SCALE FROM DRAWING.
- REMOVE ALL SHARP EDGES, R.02 MAX.
- ALL MACHINING FLUIDS SHALL BE WATER SOLUBLE AND FREE OF SULFUR, CHLORINE AND SILICONE.

DIMENSIONS ARE IN INCHES
TOLERANCES:
.XX ± 0.01
.XXX ± 0.005
ANGULAR ± 0.5 °

MATERIAL

FINISH

SCALE: NPS | **PROJECTION:**

PARTS LIST

CALIFORNIA INSTITUTE OF TECHNOLOGY
MASSACHUSETTS INSTITUTE OF TECHNOLOGY
IGR, GLASGOW UNIVERSITY GEO 600 GROUP

SYSTEM ADVANCED LIGO
SUB-SYSTEM SUS

NEXT ASSY

PART NAME OMC UPPER WIRE JIG ASSEMBLY

DRAWN	M. MEYER	13 MAR 08
CHECKED	D. BRIDGES	24 MAR 2008
APPROVED		

SIZE C | **DWG. NO.** D070139 | **REV.** A
SCALE: NPS | **PROJECTION:** | **SHEET 1 OF 1**